



July 29, 2010

Remediation # 4365

Mr. Mike Cox
Environmental Coordinator
Noble Energy, Inc.
804 Grand Avenue
Platteville, Colorado 80651

Mr. Cliff Cox
Foundation Energy Management
P.O. Box 17127
Fort Worth, TX 76102

**RE: Second Quarter 2010 Remediation and Monitoring Report
Becky #2-6 Natural Gas Wellhead Site
Weld County, Colorado**

Dear Mr. Cox:

LT Environmental, Inc. (LTE) was retained by Noble Energy, Inc. (Noble) and Foundation Energy Management (Foundation) to conduct corrective actions at the Becky #2-6 natural gas wellhead site (Site) located approximately 3.5 miles west of the intersection of Interstate 25 and Weld County Road (WCR) 52 in Weld County, Colorado. A Site Map is provided as Figure 1.

LTE, on behalf of Noble and Foundation, has completed system design, installation, and startup of the air sparging/soil vapor extraction (AS/SVE) remediation system. LTE is continuing to conduct groundwater monitoring at the Site to evaluate previously documented groundwater impact. This correspondence is provided as the second quarter 2010 remediation and monitoring report, and summarizes activities conducted at the Site from March 8, 2010 through July 15, 2010. Activities conducted during the reporting period and summarized in this report include operation and maintenance (O&M) of the remediation system and quarterly groundwater sampling conducted June 17, 2010.

Remediation System Description

The AS system is designed to introduce ambient air into the subsurface water column to induce dissolved hydrocarbon volatilization and to promote aerobic microbial decomposition of petroleum constituents (Figure 2). The SVE system is designed to volatilize petroleum constituents adsorbed onto soil particles and to remove petroleum vapors released from the groundwater by the AS process (Figure 3). AS and SVE wells are connected to a remediation equipment trailer housing the equipment for the AS/SVE systems. The distribution and spacing of these wells are based on site-specific soil analytical data, groundwater quality data, contamination profiles, geological characteristics, experience with similar systems, and the location and influence area of remediation



wells (Figure 4). Additional details of the remediation system design and installation were presented in the previously submitted report titled *Remediation System Installation, Startup, and Groundwater Sampling Results* dated January 9, 2009 and other subsequent reports. The remediation system began operation at the Site on November 17, 2008.

Remediation System Operation and Maintenance

O&M activities conducted in the reporting period included:

- Completion of routine, weekly, monthly, and quarterly O&M checks to monitor and adjust system performance;
- Generator maintenance, which included changing the oil and oil filters; and
- Repair of generator radiator.

The AS/SVE remediation system operated at the Site during all of the current reporting period, with shutdowns for generator troubleshooting and repair. Remediation efforts onsite are focused on the remaining areas of the Site exhibiting groundwater impact.

Groundwater Sampling Procedures

Seven groundwater monitoring wells were sampled at the Site on June 17, 2010 to determine the current plume extent. Prior to sampling each well, the depth to groundwater was measured and recorded for calculating purge volumes (Table 1).

Each well was purged of three casing volumes prior to collection of groundwater samples. Groundwater samples were collected from the well points by advancing disposable 3/16-inch diameter polyethylene tubing below the groundwater table inside the 1-inch diameter polyvinyl chloride (PVC) well casing. A peristaltic pump was utilized to collect the groundwater samples prior to placement into laboratory prepared sample bottles. Groundwater samples were collected in 40-milliliter vials, placed on ice, and delivered under chain-of-custody (COC) protocol to Origins Laboratory located in Denver, Colorado. Samples were analyzed for benzene, toluene, ethylbenzene, and total xylenes (BTEX) by Environmental Protection Agency Method 8260B.

Hydrogeology / Field Measurements

During the June 2010 sampling event, the depths to static groundwater level ranged from 8.75 feet below top of casing (BTOC) in MW-7 to 9.59 feet BTOC in MW-25 (Table 1). Monitoring Well MW-23 was dry. The groundwater flow direction was to the north with an average hydraulic gradient of approximately 0.0014 feet per foot, which is similar to historical values.



Groundwater Analytical Results

The Colorado Department of Public Health and Environmental (CDPHE) Water Quality Control Commission (WQCC) has established Regulation 41 - The Basic Standards for Groundwater for BTEX of 5.0 micrograms per liter (ug/L) for benzene, 560 ug/L for toluene, 700 ug/L for ethylbenzene, and 1,400 ug/L for total xylenes, respectively. Table 1 summarizes groundwater analytical results for samples collected during all monitoring events. The laboratory analytical report, laboratory quality assurance/quality control data, and COC documentation are attached.

Seven groundwater samples were collected and submitted to Origins Laboratory for BTEX analysis during the June 17, 2010 sampling event. Free-phase petroleum hydrocarbons were not identified in any of the monitoring wells. Groundwater analytical results indicated that benzene was detected above the CDPHE-WQCC Regulation 41 standards in monitoring wells MW-34, MW-26, and MW-10, at concentrations of 5.19 ug/L, 8.15 ug/L, and 113 ug/L, respectively. BTEX compounds were not detected above the laboratory method detection limits or in compliance with CDPHE-WQCC Reg. 41 in the remaining samples. Groundwater analytical results for the June 17, 2010 sampling event are summarized in Table 1 and illustrated on Figure 4.

Summary and Conclusions

As seen in Figure 5 and Table 1, the effectiveness of the AS/SVE system is evident by the approximately 75% reduction in the hydrocarbon impacted area from June 2008 (pre-remediation) to June 2010. Isocontours presented on Figure 5 indicate the reduction of plume size as the result of system operation. As seen on Table 1, benzene concentrations remained below groundwater standards in all wells sampled that previously contained concentrations below standards except for monitoring wells MW-26 and MW-34. In two monitoring wells remediation system operation decreased the benzene concentrations to below the groundwater standards (MW-13, and MW-09), indicating cleanup has been achieved in those areas. In addition to the dramatic reduction in plume extent, the remaining impact identified in monitoring wells MW-10, MW-26, and MW-34 have all degraded by orders of magnitude when compared to pre-remediation data.

Free product was not present in any of the monitoring wells as previously observed (MW-10 and MW-16), indicating remediation progress and free-phase product abatement. System operations will be focused in the area that indicates remaining benzene concentrations above groundwater standards (MW-10, MW-26, and MW-34). Figure 5 provides benzene isocontours for the most recent sampling events (May, September, December 2009, March, June 2010) as well as for conditions encountered during the initial site investigation (June 2008). As shown in the attached Table 1, benzene is still present at the Site and continued remediation system operation is recommended in the limited remaining areas to achieve cleanup goals.

The next groundwater sampling event will be conducted in September 2010. Groundwater monitoring will continue to be conducted at the Site on a quarterly basis until site closure status is received from the Colorado Oil and Gas Conservation Commission.



LTE appreciates the opportunity to provide environmental services to Noble and Foundation. Please call us at 303-433-9788 if you have any questions or comments regarding this report.

Sincerely,

LT ENVIRONMENTAL, INC.

A handwritten signature in black ink that reads "Rob Rebel".

Rob Rebel, P.E.
Project Manager

A handwritten signature in black ink that reads "Steve D. Kahn".

Steve D. Kahn, P.E.
Client Manager/Senior Engineer

Attachments

Table 1: Groundwater Quality Data

Figure 1: Site Map

Figure 2: Air Sparging System Layout

Figure 3: Soil Vapor Extraction System Layout

Figure 4: Groundwater Analytical Results – June 17, 2010

Figure 5: Groundwater Analytical Summary

Attachment: Laboratory Analytical Reports

TABLE



TABLE 1

GROUNDWATER QUALITY DATA
BECKY #2-6
WELD COUNTY, COLORADO
NOBLE ENERGY, INC.

Well ID	Date	Depth to Product (feet btoc)	Depth to Water (feet btoc)	Product Thickness (feet)	Benzene (ug/L)	Toluene (ug/L)	Ethylbenzene (ug/L)	Total Xylenes (ug/L)
MW-1	6/24/2008		7.92		3.52	<1.00	55.05	25.16
	11/10/2008		7.66		<1.00	<1.00	<1.00	<3.00
	2/23/2009		7.46		<1.00	<1.00	<1.00	<3.00
	5/27/2009		6.74		<1.00	<1.00	<1.00	<3.00
	9/1/2009		7.78		<1.00	<1.00	<1.00	<3.00
	12/28/2009		6.89		<1.00	<1.00	<1.00	<3.00
MW-2	6/24/2008		8.01		<1.00	<1.00	<1.00	<3.00
MW-3	6/24/2008		8.09		6.43	<1.00	<1.00	5.15
	11/10/2008		7.83		1.26	<1.00	<1.00	<3.00
	2/23/2009		7.68		<1.00	<1.00	<1.00	<3.00
	5/27/2009		6.98		2.31	<1.00	<1.00	<3.00
	9/1/2009		8.03		<1.00	<1.00	<1.00	<3.00
	12/28/2009		7.21		<1.00	<1.00	<1.00	<3.00
MW-4	6/24/2008		7.88		<1.00	<1.00	<1.00	<3.00
	11/10/2008		7.73		<1.00	<1.00	<1.00	<3.00
	2/23/2009		7.59		<1.00	<1.00	<1.00	<3.00
	5/27/2009		6.82		<1.00	<1.00	<1.00	<3.00
	9/1/2009		8.07		<1.00	<1.00	<1.00	<3.00
	12/28/2009		7.01		<1.00	<1.00	<1.00	<3.00
MW-5	6/24/2008		8.08		<1.00	<1.00	<1.00	<3.00
MW-6	6/24/2008		7.85		<1.00	<1.00	<1.00	<3.00
MW-7	6/24/2008		8.10		358.40	1.02	277.60	3,120.29
	11/10/2008		7.98		725	<1.00	493	6,008.8
	2/23/2009		7.36		5.03	<1.00	9.04	141
	5/27/2009		7.09		10.4	1.16	362	498.2
	9/1/2009		8.14		<1.00	<1.00	<1.00	438
	12/28/2009		7.39		<1.00	<1.00	<1.00	19.1
	3/11/2010		7.81		<1.00	<1.00	2.71	35.1
	6/17/2010		8.75		<1.00	<1.00	<1.00	57.7



TABLE 1

GROUNDWATER QUALITY DATA
BECKY #2-6
WELD COUNTY, COLORADO
NOBLE ENERGY, INC.

Well ID	Date	Depth to Product (feet btoc)	Depth to Water (feet btoc)	Product Thickness (feet)	Benzene (ug/L)	Toluene (ug/L)	Ethylbenzene (ug/L)	Total Xylenes (ug/L)
MW-8	6/24/2008		7.60		<1.00	<1.00	<1.00	<3.00
	11/10/2008		7.59		<1.00	<1.00	<1.00	<3.00
	2/23/2009		7.34		<1.00	<1.00	<1.00	<3.00
	5/27/2009		6.59		<1.00	<1.00	<1.00	<3.00
	9/1/2009		7.64		<1.00	<1.00	<1.00	<3.00
	12/28/2009		6.87		<1.00	<1.00	<1.00	<3.00
MW-9	6/24/2008		8.45		430.20	<1.00	35.57	396.80
	11/10/2008		8.32		175	<1.00	24.7	77.90
	2/23/2009		8.29		12.8	<1.00	1.56	3.70
	5/27/2009		7.46		99.4	<1.00	15.0	77.3
	9/1/2009		5.61		243	<1.00	15.8	38.0
	12/28/2009		7.85		5.23	<1.00	<1.00	6.95
	3/11/2010		8.35		61.0	<1.00	9.53	31.5
	6/17/2010		9.12		1.85	<1.00	<1.00	<1.00
MW-10	6/24/2008		8.26		1,254.2	1.84	223.60	2,373.80
	11/10/2008	8.13	8.63	0.50	NA	NA	NA	NA
	11/13/2008	8.21	8.44	0.23	NA	NA	NA	NA
	2/23/2009	8.09	8.01	0.08	NA	NA	NA	NA
	5/27/2009		7.30		145	<1.00	86.6	1,145.8
	9/1/2009		8.38		176	<1.00	<1.00	542
	12/28/2009		7.71		183	<1.00	120	570.4
	3/11/2010		8.12		139	<1.00	135	969.2
	6/17/2010		8.92		113	<1.00	86.2	1,260
MW-11	6/24/2008		7.52		<1.00	<1.00	1.35	14.70
	11/10/2008		7.48		<1.00	<1.00	<1.00	5.00
	2/23/2009		7.25		<1.00	<1.00	<1.00	<3.00
	5/28/2009		6.60		<1.00	<1.00	<1.00	<3.00
	9/1/2009		8.62		<1.00	<1.00	<1.00	<3.00
	12/28/2009		6.90		<1.00	<1.00	<1.00	<3.00
MW-12	6/24/2008		7.70		<1.00	<1.00	<1.00	<3.00



TABLE 1

GROUNDWATER QUALITY DATA
BECKY #2-6
WELD COUNTY, COLORADO
NOBLE ENERGY, INC.

Well ID	Date	Depth to Product (feet btoc)	Depth to Water (feet btoc)	Product Thickness (feet)	Benzene (ug/L)	Toluene (ug/L)	Ethylbenzene (ug/L)	Total Xylenes (ug/L)
MW-13	6/24/2008		8.68		1,616.2	<1.00	249.20	3,551.0
	11/10/2008		8.85		684	<1.00	84.0	152.11
	2/23/2009		8.72		390	<1.00	26.7	86.5
	5/28/2009		8.75		500	<1.00	69.8	120
	9/1/2009		8.90		329	<1.00	21.8	1.05
	12/28/2009		8.43		244	<1.00	86.3	442.12
	3/11/2010		8.72		34.2	<1.00	14.4	44.2
	6/17/2010		9.30		3.14	<1.00	1.27	2.22
MW-14	6/24/2008		9.35		3.66	1.26	1.69	21.65
	11/10/2008		9.56		<1.00	<1.00	<1.00	<3.00
	2/23/2009		9.48		<1.00	<1.00	<1.00	<3.00
	5/27/2009		8.65		<1.00	<1.00	<1.00	<3.00
	9/1/2009		8.84		<1.00	<1.00	<1.00	<3.00
	12/28/2009		9.19		<1.00	<1.00	<1.00	<3.00
MW-15	6/24/2008		9.34		<1.00	<1.00	<1.00	4.31
	11/10/2008		9.89		<1.00	<1.00	<1.00	<3.00
	2/23/2009		9.66		<1.00	<1.00	<1.00	<3.00
	5/28/2009		8.89		<1.00	<1.00	<1.00	<3.00
	9/1/2009		9.83		<1.00	<1.00	<1.00	<3.00
	12/28/2009		9.45		<1.00	<1.00	<1.00	<3.00
MW-16	6/24/2008		9.19		6.28	<1.00	170.65	1,998.36
	11/10/2008	9.83	9.84	0.01	NA	NA	NA	NA
	11/13/2008		9.88		<1.00	<1.00	<1.00	220.86
	2/23/2009		9.62		<1.00	<1.00	9.12	89.0
	5/27/2009		8.81		<1.00	<1.00	14.3	152
	9/1/2009		9.78		<1.00	<1.00	<1.00	88.9
	12/28/2009		9.49		<1.00	<1.00	12.9	73.6



TABLE 1

GROUNDWATER QUALITY DATA
BECKY #2-6
WELD COUNTY, COLORADO
NOBLE ENERGY, INC.

Well ID	Date	Depth to Product (feet btoc)	Depth to Water (feet btoc)	Product Thickness (feet)	Benzene (ug/L)	Toluene (ug/L)	Ethylbenzene (ug/L)	Total Xylenes (ug/L)
MW-17	6/24/2008		9.16		<1.00	<1.00	<1.00	13.46
	11/10/2008		10.27		<1.00	<1.00	<1.00	<3.00
	2/23/2009		9.98		<1.00	<1.00	<1.00	<3.00
	5/27/2009		10.95		NA			
	9/1/2009		9.87		<1.00	<1.00	<1.00	<3.00
MW-18	6/24/2008		9.37		<1.00	<1.00	<1.00	3.24
	11/10/2008		10.13		<1.00	<1.00	<1.00	3.36
	2/23/2009		9.92		<1.00	<1.00	<1.00	<3.00
	5/28/2009		9.14		<1.00	<1.00	<1.00	<3.00
	9/1/2009		10.05		<1.00	<1.00	<1.00	<3.00
	12/28/2009		9.61		<1.00	<1.00	<1.00	<3.00
MW-19	6/24/2008		8.73		<1.00	<1.00	<1.00	3.53
MW-20	6/24/2008		8.52		<1.00	<1.00	<1.00	<3.00
MW-21	6/24/2008		8.20		<1.00	<1.00	<1.00	<3.00
MW-22	6/24/2008		8.66		<1.00	<1.00	<1.00	<3.00
MW-23	6/24/2008		9.14		83.13	1.43	164.46	1,283
	11/10/2008		8.95		1.46	<1.00	1.54	<3.00
	2/23/2009				WELL DRY			
	9/1/2009				WELL DRY			
	12/28/2009				WELL DRY			
	3/11/2010				WELL DRY			
MW-24	6/17/2010				WELL DRY			
	6/24/2008		9.00		<1.00	<1.00	<1.00	<3.00
	11/10/2008		8.85		<1.00	<1.00	<1.00	6.27
	2/23/2009		8.84		<1.00	<1.00	<1.00	<3.00
	5/27/2009		8.00		<1.00	<1.00	<1.00	<3.00
	9/1/2009		9.09		<1.00	<1.00	<1.00	<3.00
	12/28/2009		8.52		<1.00	<1.00	<1.00	<3.00



TABLE 1

GROUNDWATER QUALITY DATA
BECKY #2-6
WELD COUNTY, COLORADO
NOBLE ENERGY, INC.

Well ID	Date	Depth to Product (feet btoc)	Depth to Water (feet btoc)	Product Thickness (feet)	Benzene (ug/L)	Toluene (ug/L)	Ethylbenzene (ug/L)	Total Xylenes (ug/L)
MW-25	6/24/2008		8.86		120.95	<1.00	17.52	602.10
	11/10/2008		8.85		47.5	<1.00	7.73	28.8
	2/23/2009		8.71		20.3	<1.00	1.64	3.86
	5/27/2009		7.95		29.9	<1.00	7.40	7.13
	9/1/2009		9.05		<1.00	<1.00	<1.00	<3.00
	12/28/2009		8.49		<1.00	<1.00	<1.00	<3.00
	3/11/2010		8.95		1.23	<1.00	<1.00	<3.00
	6/17/2010		9.59		2.33	4.41	<1.00	2.16
MW-26	6/24/2008		8.35		75.72	<1.00	71.24	598.70
	11/10/2008		8.47		57.4	<1.00	36.4	47.60
	2/23/2009		8.26		<1.00	<1.00	<1.00	<3.00
	5/27/2009		7.50		2.02	<1.00	1.97	<3.00
	9/1/2009		8.54		<1.00	<1.00	<1.00	<3.00
	12/28/2009		8.07		<1.00	<1.00	<1.00	<3.00
	3/11/2010		8.63		<1.00	<1.00	<1.00	<3.00
	6/17/2010		9.10		8.15	1.98	<1.00	<1.00
MW-27	6/24/2008		8.73		<1.00	<1.00	<1.00	<3.00
	11/10/2008		9.07		1.72	<1.00	<1.00	18.4
	2/23/2009		8.87		<1.00	<1.00	<1.00	<3.00
	5/27/2009		8.03		<1.00	<1.00	<1.00	<3.00
	9/1/2009		9.07		<1.00	<1.00	<1.00	<3.00
	12/28/2009		8.71		<1.00	<1.00	<1.00	<3.00
MW-28	6/24/2008		8.85		<1.00	<1.00	<1.00	2.97
MW-29	6/24/2008		8.89		<1.00	<1.00	<1.00	<3.00
	11/10/2008		9.69		<1.00	<1.00	<1.00	<3.00
	2/23/2009		9.46		<1.00	<1.00	4.18	5.23
	5/27/2009		8.65		<1.00	<1.00	<1.00	<3.00
	9/1/2009		9.61		<1.00	<1.00	<1.00	<3.00
	12/28/2009		10.36		<1.00	<1.00	<1.00	<3.00



TABLE 1

GROUNDWATER QUALITY DATA
BECKY #2-6
WELD COUNTY, COLORADO
NOBLE ENERGY, INC.

Well ID	Date	Depth to Product (feet btoc)	Depth to Water (feet btoc)	Product Thickness (feet)	Benzene (ug/L)	Toluene (ug/L)	Ethylbenzene (ug/L)	Total Xylenes (ug/L)
MW-30	6/24/2008		8.57		<1.00	<1.00	<1.00	<3.00
	11/10/2008		8.56		<1.00	<1.00	<1.00	2.88
	2/23/2009		8.46		<1.00	<1.00	<1.00	<3.00
	5/27/2009		7.69		<1.00	<1.00	<1.00	<3.00
	9/1/2009		8.67		<1.00	<1.00	<1.00	<3.00
	12/28/2009		8.26		<1.00	<1.00	<1.00	<3.00
MW-31	6/24/2008		7.94		<1.00	<1.00	<1.00	<3.00
MW-32	7/7/2008				<1.0	<1.0	<1.0	<1.0
	11/10/2008		9.57		<1.00	<1.00	<1.00	<3.00
	2/23/2009		9.42		<1.00	<1.00	<1.00	<3.00
	5/27/2009		8.70		<1.00	<1.00	<1.00	<3.00
	9/1/2009		9.74		<1.00	<1.00	<1.00	<3.00
	12/28/2009		8.96		<1.00	<1.00	<1.00	<3.00
MW-33	7/7/2008				1.4	<1.0	10	5.9
	11/10/2008				WELL DESTROYED			
MW-34	7/7/2008				160	<1.00	370	2,800
	11/10/2008		8.13		85.7	<1.00	89.4	108
	2/23/2009		7.98		<1.00	<1.00	<1.00	<3.00
	5/27/2009		7.26		<1.00	<1.00	<1.00	<3.00
	9/1/2009		9.58		<1.00	<1.00	<1.00	<3.00
	12/28/2009		7.57		<1.00	<1.00	<1.00	<3.00
	3/11/2010		8.02		<1.00	<1.00	<1.00	<3.00
	6/17/2010		8.97		5.19	3.04	<1.00	<1.00
CDPHE-WQCC Regulation 41 Groundwater Standards					5.0	560	700	1,400

NOTES:

CDPHE-WQCC - Colorado Department of Public Health and Environmental Water Quality Control Commission

Benzene, toluene, ethylbenzene, total xylenes analyzed by EPA Method 8260B

btoc - below top of casing

ug/L - micrograms per liter

< indicates result is less than the stated laboratory method detection limit

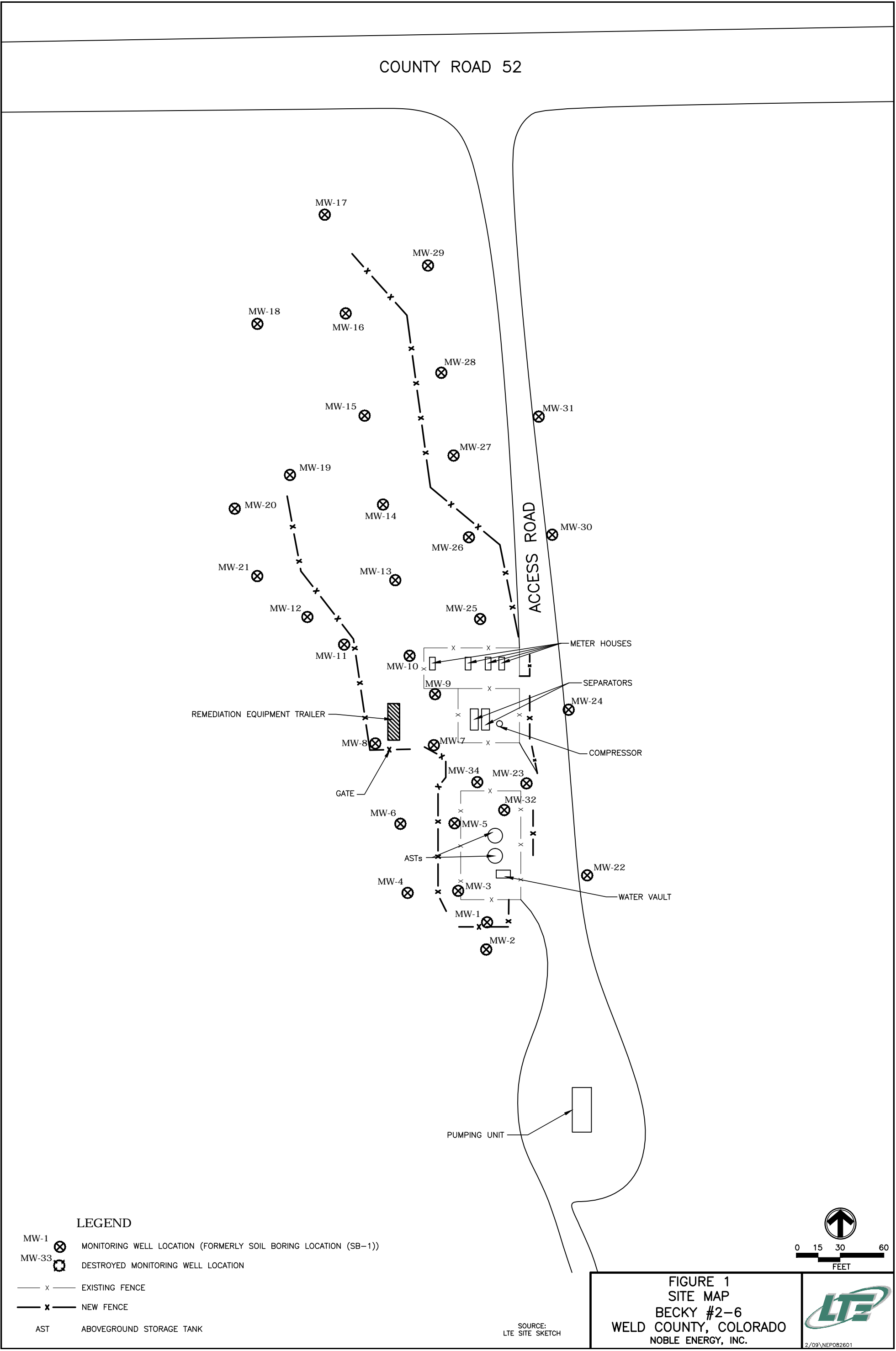
NA - not analyzed

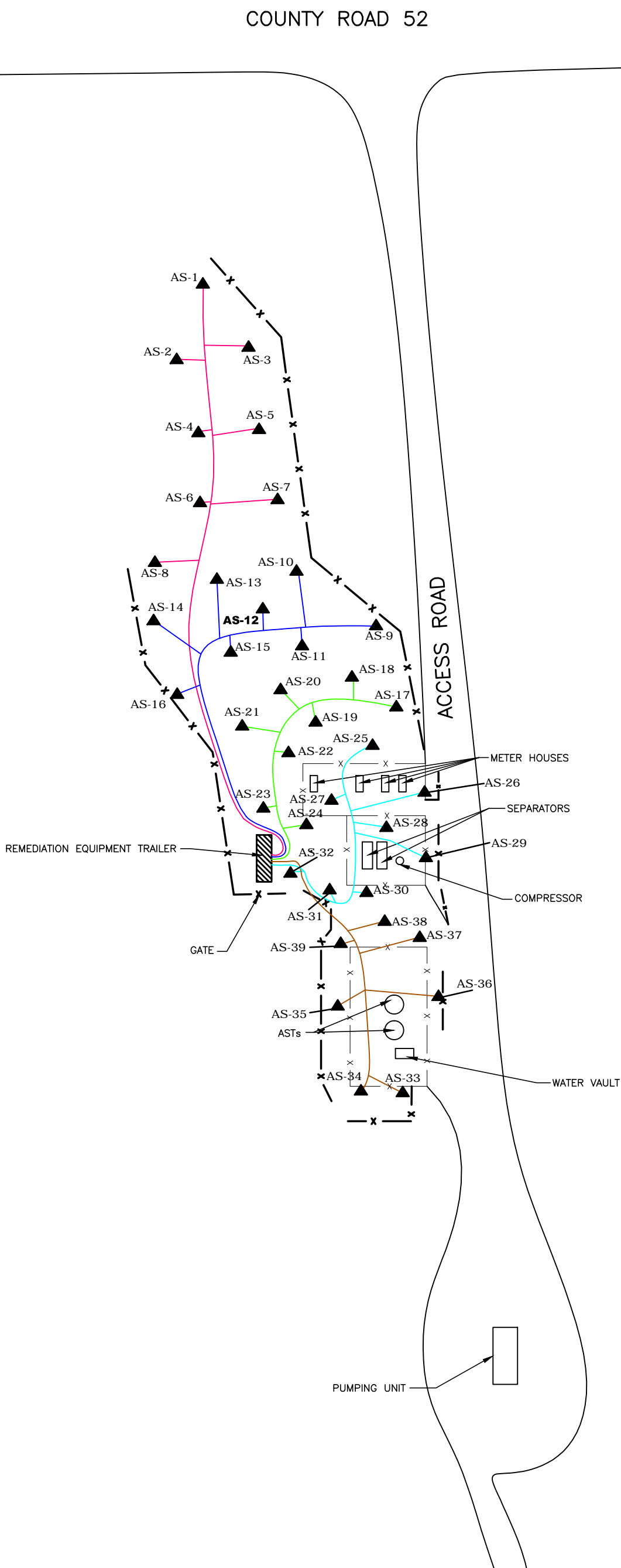
NM - not measured



FIGURES





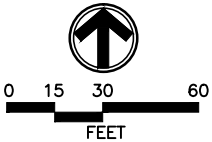


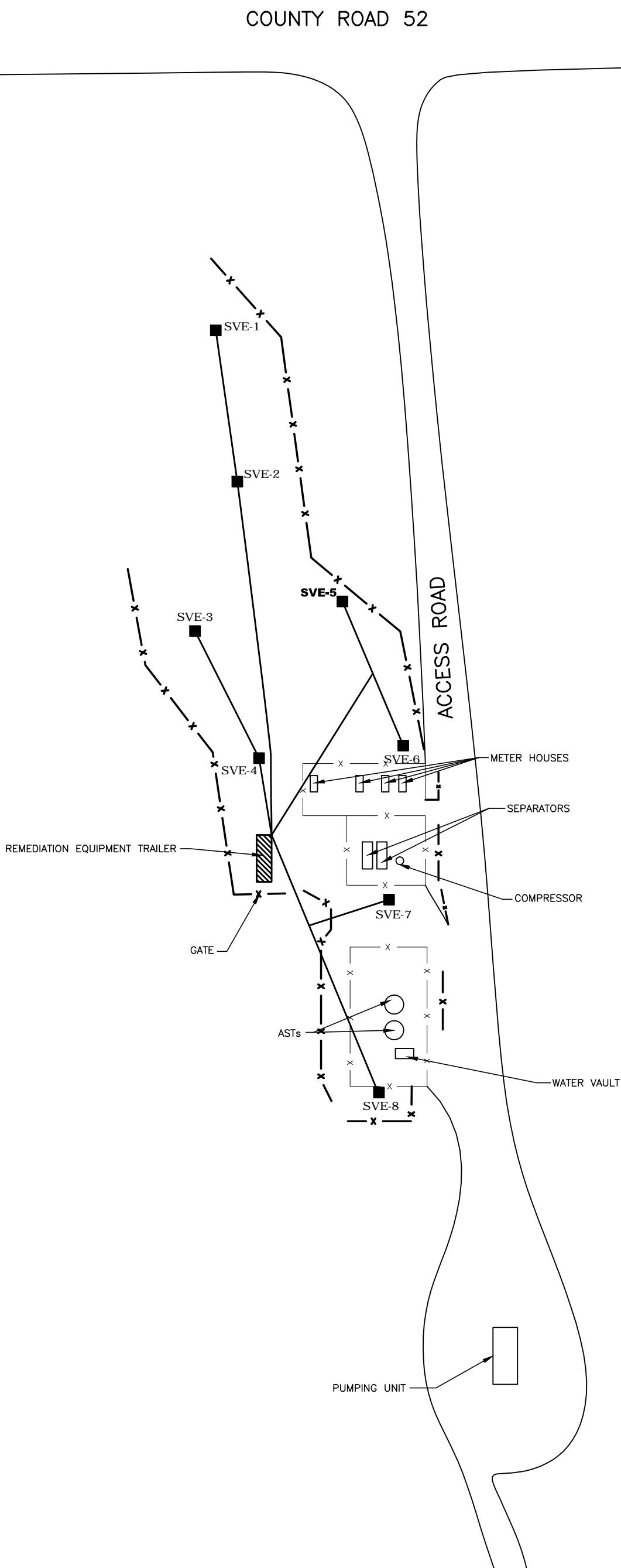
LEGEND

- x — EXISTING FENCE
- x — NEW FENCE
- AS-1 ▲ AIR SPARGING WELL LOCATION
- SYSTEM PIPING (ZONE 1)
- SYSTEM PIPING (ZONE 2)
- SYSTEM PIPING (ZONE 3)
- SYSTEM PIPING (ZONE 4)
- SYSTEM PIPING (ZONE 5)
- AST ABOVEGROUND STORAGE TANK

SOURCE:
LTE SITE SKETCH

FIGURE 2
AIR SPARGING SYSTEM LAYOUT
BECKY #2-6
WELD COUNTY, COLORADO
NOBLE ENERGY, INC.

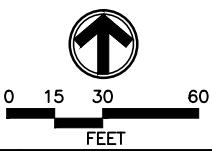




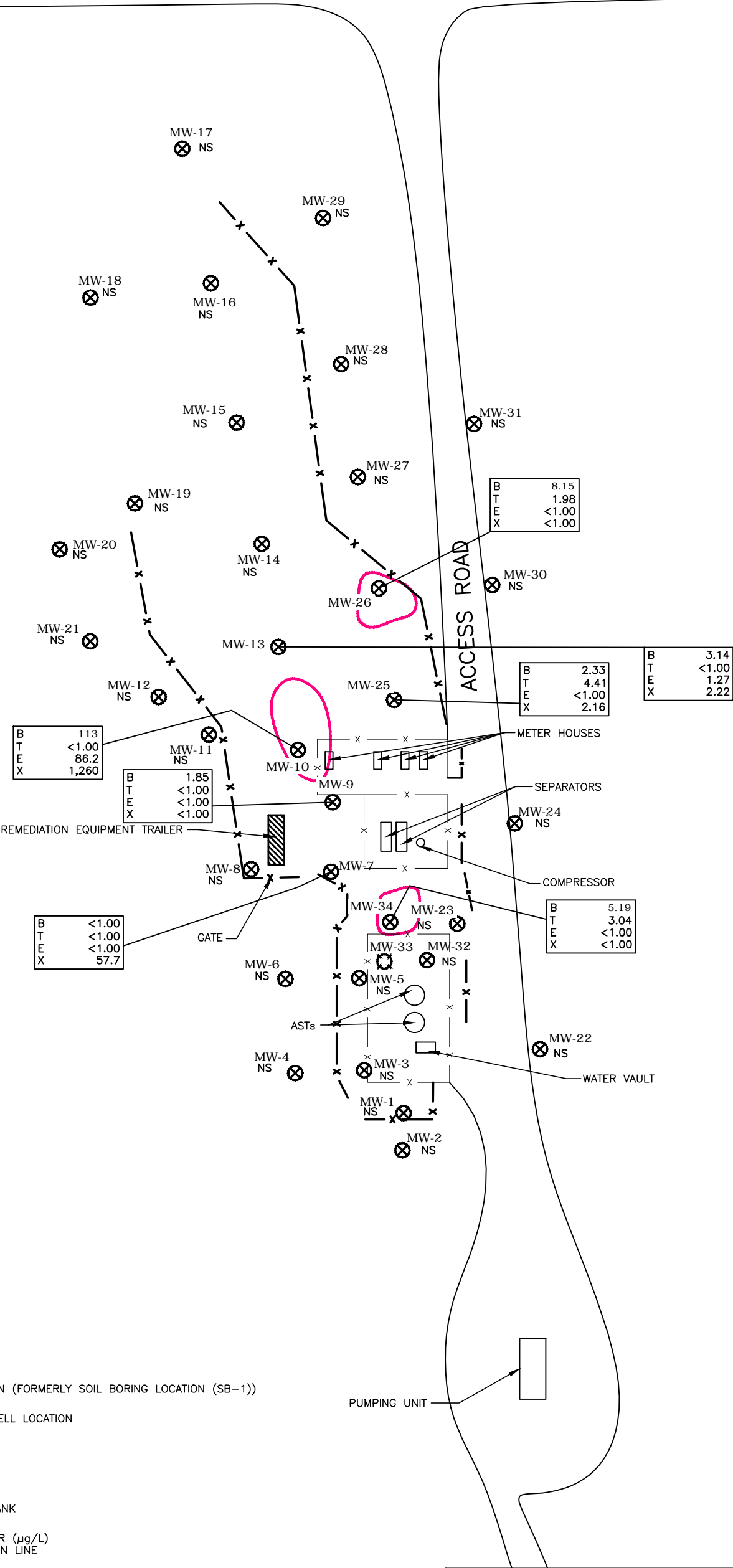
- LEGEND**
- x — EXISTING FENCE
 - x — NEW FENCE
 - SVE-1 ■ SOIL VAPOR EXTRACTION WELL LOCATION
 - SYSTEM PIPING
 - AST ABOVEGROUND STORAGE TANK

SOURCE:
LTE SITE SKETCH

FIGURE 3
SOIL VAPOR EXTRACTION SYSTEM LAYOUT
BECKY #2-6
WELD COUNTY, COLORADO
NOBLE ENERGY, INC.



COUNTY ROAD 52



LEGEND

- MW-1 ⊗ MONITORING WELL LOCATION (FORMERLY SOIL BORING LOCATION (SB-1))
- MW-33 ⊗ DESTROYED MONITORING WELL LOCATION
- x — EXISTING FENCE
- x — NEW FENCE
- AST ABOVEGROUND STORAGE TANK

5.0 MICROGRAMS PER LITER (µg/L) BENZENE ISOCONCENTRATION LINE

B	BENZENE
T	TOLUENE
E	ETHYLBENZENE
X	TOTAL XYLENES

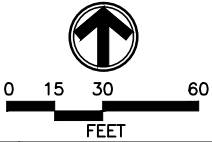
ANALYTICAL RESULTS ARE REPORTED IN µg/L

NS NOT SAMPLED

BOLD INDICATES EXCEEDANCE OF STANDARD

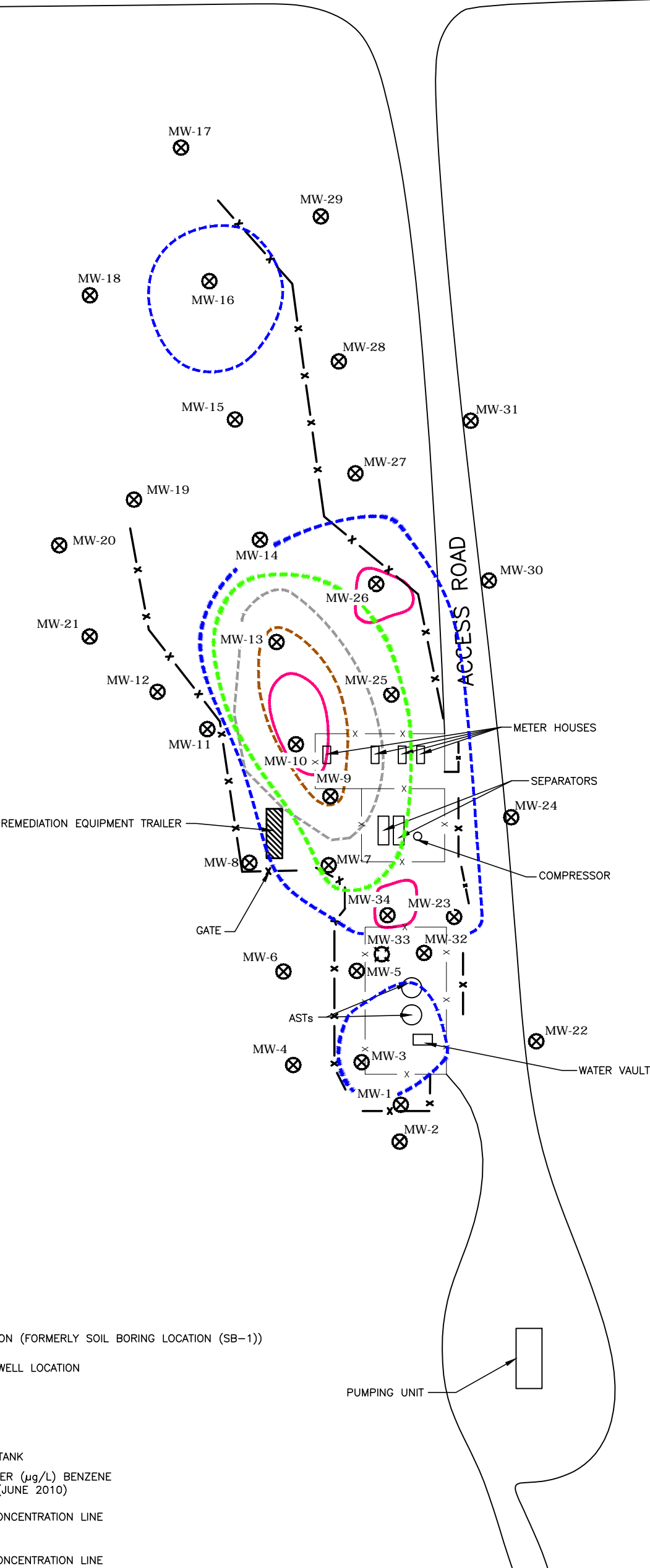
SOURCE:
LTE SITE SKETCH

FIGURE 4
GROUNDWATER ANALYTICAL RESULTS
JUNE 17, 2010
BECKY #2-6
WELD COUNTY, COLORADO
NOBLE ENERGY, INC.



2/09\NEP082602

COUNTY ROAD 52

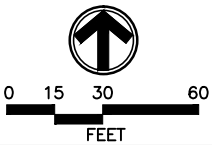


LEGEND

- MW-1 MONITORING WELL LOCATION (FORMERLY SOIL BORING LOCATION (SB-1))
- MW-33 DESTROYED MONITORING WELL LOCATION
- x — EXISTING FENCE
- x — NEW FENCE
- AST ABOVEGROUND STORAGE TANK
- 5.0 MICROGRAMS PER LITER (µg/L) BENZENE ISOCONCENTRATION LINE (JUNE 2010)
- 5.0 µg/L BENZENE ISOCONCENTRATION LINE (MARCH 2010)
- 5.0 µg/L BENZENE ISOCONCENTRATION LINE (SEPTEMBER 2009)
- 5.0 µg/L BENZENE ISOCONCENTRATION LINE (MAY 2009)
- 5.0 µg/L BENZENE ISOCONCENTRATION LINE (JUNE 2008)

SOURCE:
LTE SITE SKETCH

FIGURE 5
GROUNDWATER ANALYTICAL SUMMARY
BECKY #2-6
WELD COUNTY, COLORADO
NOBLE ENERGY, INC.



2/09\NEP082602

ATTACHMENT
LABORATORY ANALYTICAL REPORT



6/27/2010

LT Environmental, Inc.

Matthew Harrison

4600 West 60th Avenue

Arvada

CO

80003

Project Name- Noble - Becky #2-6

Project Number- NEP0826

Attached are your analytical results for Noble - Becky #2-6 received by Origins Laboratory, Inc. June 17, 2010 2:50 pm. This project is associated with Origins project number X006124-01.

The analytical results in the following report were analyzed under the guidelines of EPA Methods specified in SW-846. The analytical results apply specifically to the samples and analyses specified per the attached Chain of Custody.

Thank you for selecting Origins for your analytical needs. Please contact us with any questions concerning this report, or if we can help with anything at all.

Origins Laboratory, Inc.

303.433.1322

o-squad@oelabinc.com



LT Environmental, Inc.
4600 West 60th Avenue
Arvada CO 80003

Matthew Harrison
Project Number: NEP0826
Project: Noble - Becky #2-6

CROSS REFERENCE REPORT

Sample ID	Laboratory ID	Matrix	Sampled	Date Received
MW07	X006124-01	Water	6/17/2010 1:00:00PM	06/17/2010 14:50
MW34	X006124-02	Water	6/17/2010 1:05:00PM	06/17/2010 14:50
MW25	X006124-03	Water	6/17/2010 1:10:00PM	06/17/2010 14:50
MW26	X006124-04	Water	6/17/2010 1:15:00PM	06/17/2010 14:50
MW13	X006124-05	Water	6/17/2010 1:20:00PM	06/17/2010 14:50
MW10	X006124-06	Water	6/17/2010 1:25:00PM	06/17/2010 14:50
MW09	X006124-07	Water	6/17/2010 1:30:00PM	06/17/2010 14:50

Origins Laboratory, Inc.



The results in this report apply to the samples analyzed in accordance with the chain of custody document. This analytical report must be reproduced in its entirety.

Noelle E Doyle, Laboratory Manager

LT Environmental, Inc.
4600 West 60th Avenue
Arvada CO 80003

Matthew Harrison
Project Number: NEP0826
Project: Noble - Becky #2-6

www.originslaboratory.com

page 1 of 1
X006124

Project Manager: Matt Harrison
Project Name: Becky #2-6
Project Number: NEP0826
Samples Collected By: Steve Singano

Client: LTE, Inc.
Address: 4600 W 60th Ave, Arvada, CO 80003
Telephone Number: 303/433-9788
Email Address: mharrison@lte.com

Fax: 303.265.9645

Sample ID Description	Date Sampled	Time Sampled	# of Containers	Preservative				Matrix			Analysis	Sample Instructions	Turnaround Time:		
				Unpreserved	HCl	HNO ₃	Other	Groundwater	Soil	Air Summa Canister #				Other	
MW-7	6-17-10	1300	3		X			X					1		Same Day <input type="checkbox"/> 24 Hr <input type="checkbox"/> 48 Hr <input type="checkbox"/> Standard <input checked="" type="checkbox"/>
MW-34	6-17-10	1305	3		X			X					2		
MW-25	6-17-10	1310	3		X			X					3		
MW-26	6-17-10	1315	3		X			X					4		
MW-13	6-17-10	1320	3		X			X					5		
MW-10	6-17-10	1325	3		X			X					6		
MW-9	6-17-10	1330	3		X			X					7		
Relinquished By: Steve Singano	Date: 6-17-10	Time: 1410													Time: 1454
Relinquished By:	Date:	Time:													

Date Results Needed

Origins Laboratory, Inc.

Noelle E Doyle

The results in this report apply to the samples analyzed in accordance with the chain of custody document. This analytical report must be reproduced in its entirety.

Noelle E Doyle, Laboratory Manager

LT Environmental, Inc.
4600 West 60th Avenue
Arvada CO 80003

Matthew Harrison
Project Number: NEP0826
Project: Noble - Becky #2-6

MW07

6/17/2010 1:00:00PM

Analyte	Result	Reporting Limit	Units	Dilution	Batch	Prepared	Analyzed	Notes
---------	--------	-----------------	-------	----------	-------	----------	----------	-------

Origins Laboratory, Inc.
X006124-01 (Water)

BTEX by EPA 8260B

Benzene	ND	0.00100	mg/L	1	OF24005	06/24/2010	06/25/2010
Toluene	ND	0.00100	"	"	"	"	"
Ethylbenzene	ND	0.00100	"	"	"	"	"
Xylenes, total	0.0577	0.00100	"	"	"	"	"

Surrogate: 1,2-Dichloroethane-d4	100 %	73.5-130	"	"	"
Surrogate: Toluene-d8	99.1 %	79.3-113	"	"	"
Surrogate: 4-Bromofluorobenzene	97.6 %	81.5-117	"	"	"

Origins Laboratory, Inc.



The results in this report apply to the samples analyzed in accordance with the chain of custody document. This analytical report must be reproduced in its entirety.

Noelle E Doyle, Laboratory Manager

LT Environmental, Inc.
4600 West 60th Avenue
Arvada CO 80003

Matthew Harrison
Project Number: NEP0826
Project: Noble - Becky #2-6

MW34

6/17/2010 1:05:00PM

Analyte	Result	Reporting Limit	Units	Dilution	Batch	Prepared	Analyzed	Notes
---------	--------	-----------------	-------	----------	-------	----------	----------	-------

Origins Laboratory, Inc.
X006124-02 (Water)

BTEX by EPA 8260B

Benzene	0.00519	0.00100	mg/L	1	OF24005	06/24/2010	06/25/2010	
Toluene	0.00304	0.00100	"	"	"	"	"	
Ethylbenzene	ND	0.00100	"	"	"	"	"	
Xylenes, total	ND	0.00100	"	"	"	"	"	

Surrogate: 1,2-Dichloroethane-d4	100 %	73.5-130			"	"	"	
Surrogate: Toluene-d8	98.8 %	79.3-113			"	"	"	
Surrogate: 4-Bromofluorobenzene	97.4 %	81.5-117			"	"	"	

Origins Laboratory, Inc.



The results in this report apply to the samples analyzed in accordance with the chain of custody document. This analytical report must be reproduced in its entirety.

Noelle E Doyle, Laboratory Manager

LT Environmental, Inc.
4600 West 60th Avenue
Arvada CO 80003

Matthew Harrison
Project Number: NEP0826
Project: Noble - Becky #2-6

MW25

6/17/2010 1:10:00PM

Analyte	Result	Reporting Limit	Units	Dilution	Batch	Prepared	Analyzed	Notes
---------	--------	-----------------	-------	----------	-------	----------	----------	-------

Origins Laboratory, Inc.
X006124-03 (Water)

BTEX by EPA 8260B

Benzene	0.00233	0.00100	mg/L	1	OF24005	06/24/2010	06/25/2010	
Toluene	0.00441	0.00100	"	"	"	"	"	
Ethylbenzene	ND	0.00100	"	"	"	"	"	
Xylenes, total	0.00216	0.00100	"	"	"	"	"	

Surrogate: 1,2-Dichloroethane-d4	99.4 %	73.5-130			"	"	"	
Surrogate: Toluene-d8	98.2 %	79.3-113			"	"	"	
Surrogate: 4-Bromofluorobenzene	97.5 %	81.5-117			"	"	"	

Origins Laboratory, Inc.



The results in this report apply to the samples analyzed in accordance with the chain of custody document. This analytical report must be reproduced in its entirety.

Noelle E Doyle, Laboratory Manager

LT Environmental, Inc.
4600 West 60th Avenue
Arvada CO 80003

Matthew Harrison
Project Number: NEP0826
Project: Noble - Becky #2-6

MW26

6/17/2010 1:15:00PM

Analyte	Result	Reporting Limit	Units	Dilution	Batch	Prepared	Analyzed	Notes
---------	--------	-----------------	-------	----------	-------	----------	----------	-------

Origins Laboratory, Inc.
X006124-04 (Water)

BTEX by EPA 8260B

Benzene	0.00815	0.00100	mg/L	1	OF24005	06/24/2010	06/25/2010	
Toluene	0.00198	0.00100	"	"	"	"	"	
Ethylbenzene	ND	0.00100	"	"	"	"	"	
Xylenes, total	ND	0.00100	"	"	"	"	"	

Surrogate: 1,2-Dichloroethane-d4	99.9 %	73.5-130	"	"	"	"	"	
Surrogate: Toluene-d8	97.7 %	79.3-113	"	"	"	"	"	
Surrogate: 4-Bromofluorobenzene	98.1 %	81.5-117	"	"	"	"	"	

Origins Laboratory, Inc.



The results in this report apply to the samples analyzed in accordance with the chain of custody document. This analytical report must be reproduced in its entirety.

Noelle E Doyle, Laboratory Manager

LT Environmental, Inc.
4600 West 60th Avenue
Arvada CO 80003

Matthew Harrison
Project Number: NEP0826
Project: Noble - Becky #2-6

MW13

6/17/2010 1:20:00PM

Analyte	Result	Reporting Limit	Units	Dilution	Batch	Prepared	Analyzed	Notes
---------	--------	-----------------	-------	----------	-------	----------	----------	-------

Origins Laboratory, Inc.
X006124-05 (Water)

BTEX by EPA 8260B

Benzene	0.00314	0.00100	mg/L	1	OF24005	06/24/2010	06/25/2010
Toluene	ND	0.00100	"	"	"	"	"
Ethylbenzene	0.00127	0.00100	"	"	"	"	"
Xylenes, total	0.00222	0.00100	"	"	"	"	"

Surrogate: 1,2-Dichloroethane-d4	102 %	73.5-130	"	"	"
Surrogate: Toluene-d8	98.0 %	79.3-113	"	"	"
Surrogate: 4-Bromofluorobenzene	98.4 %	81.5-117	"	"	"

Origins Laboratory, Inc.



The results in this report apply to the samples analyzed in accordance with the chain of custody document. This analytical report must be reproduced in its entirety.

Noelle E Doyle, Laboratory Manager

LT Environmental, Inc.
4600 West 60th Avenue
Arvada CO 80003

Matthew Harrison
Project Number: NEP0826
Project: Noble - Becky #2-6

MW10

6/17/2010 1:25:00PM

Analyte	Result	Reporting Limit	Units	Dilution	Batch	Prepared	Analyzed	Notes
---------	--------	-----------------	-------	----------	-------	----------	----------	-------

Origins Laboratory, Inc.
X006124-06 (Water)

BTEX by EPA 8260B

Benzene	0.113	0.0200	mg/L	20	OF24005	06/24/2010	06/25/2010
Toluene	ND	0.00100	"	1	"	"	06/25/2010
Ethylbenzene	0.0862	0.00100	"	"	"	"	"
Xylenes, total	1.26	0.0200	"	20	"	"	06/25/2010

Surrogate: 1,2-Dichloroethane-d4	102 %	73.5-130	"	"	"
Surrogate: Toluene-d8	98.0 %	79.3-113	"	"	"
Surrogate: 4-Bromofluorobenzene	96.8 %	81.5-117	"	"	"

Origins Laboratory, Inc.



The results in this report apply to the samples analyzed in accordance with the chain of custody document. This analytical report must be reproduced in its entirety.

Noelle E Doyle, Laboratory Manager

LT Environmental, Inc.
4600 West 60th Avenue
Arvada CO 80003

Matthew Harrison
Project Number: NEP0826
Project: Noble - Becky #2-6

MW09

6/17/2010 1:30:00PM

Analyte	Result	Reporting Limit	Units	Dilution	Batch	Prepared	Analyzed	Notes
---------	--------	-----------------	-------	----------	-------	----------	----------	-------

Origins Laboratory, Inc.
X006124-07 (Water)

BTEX by EPA 8260B

Benzene	0.00185	0.00100	mg/L	1	OF24005	06/24/2010	06/25/2010	
Toluene	ND	0.00100	"	"	"	"	"	
Ethylbenzene	ND	0.00100	"	"	"	"	"	
Xylenes, total	ND	0.00100	"	"	"	"	"	

Surrogate: 1,2-Dichloroethane-d4	99.6 %	73.5-130			"	"	"	
Surrogate: Toluene-d8	98.9 %	79.3-113			"	"	"	
Surrogate: 4-Bromofluorobenzene	97.1 %	81.5-117			"	"	"	

Origins Laboratory, Inc.



The results in this report apply to the samples analyzed in accordance with the chain of custody document. This analytical report must be reproduced in its entirety.

Noelle E Doyle, Laboratory Manager

LT Environmental, Inc.
4600 West 60th Avenue
Arvada CO 80003

Matthew Harrison
Project Number: NEP0826
Project: Noble - Becky #2-6

Volatile Organic Compounds by EPA Method 8260B - Quality Control Origins Laboratory, Inc.

Analyte	Result	Reporting Limit	Units	Spike Level	Source Result	%REC	%REC Limits	RPD	RPD Limit	Notes
Batch OF24005 - EPA 5030B										
Blank (OF24005-BLK1)					Prepared: 06/24/2010 Analyzed: 06/25/2010					
Benzene	ND	0.001	mg/L							
Toluene	ND	0.001	"							
Ethylbenzene	ND	0.001	"							
o-Xylene	ND	0.001	"							
m,p-Xylene	ND	0.002	"							
Surrogate: 1,2-Dichloroethane-d4	63.0		ug/L	62.5		101	73.5-130			
Surrogate: Toluene-d8	61.2		"	62.5		97.8	79.3-113			
Surrogate: 4-Bromofluorobenzene	60.7		"	62.5		97.2	81.5-117			
LCS (OF24005-BS1)					Prepared: 06/24/2010 Analyzed: 06/25/2010					
Benzene	0.05	0.001	mg/L	0.0500		97.7	77.3-128			
Toluene	0.05	0.001	"	0.0500		104	81.7-118			
Surrogate: 1,2-Dichloroethane-d4	62.8		ug/L	62.5		100	73.5-130			
Surrogate: Toluene-d8	62.5		"	62.5		100	79.3-113			
Surrogate: 4-Bromofluorobenzene	60.8		"	62.5		97.3	81.5-117			
Matrix Spike (OF24005-MS1)					Source: X006124-01	Prepared: 06/24/2010 Analyzed: 06/25/2010				
Benzene	0.05	0.001	mg/L	0.0500	0.0004	102	74.5-132			
Toluene	0.05	0.001	"	0.0500	0.0008	93.7	74.2-116			
Surrogate: 1,2-Dichloroethane-d4	62.8		ug/L	62.5		100	73.5-130			
Surrogate: Toluene-d8	60.4		"	62.5		96.7	79.3-113			
Surrogate: 4-Bromofluorobenzene	61.3		"	62.5		98.1	81.5-117			
Matrix Spike Dup (OF24005-MSD1)					Source: X006124-01	Prepared: 06/24/2010 Analyzed: 06/25/2010				
Benzene	0.05	0.001	mg/L	0.0500	0.0004	101	74.5-132	0.254	13.1	
Toluene	0.05	0.001	"	0.0500	0.0008	93.6	74.2-116	0.147	21.2	
Surrogate: 1,2-Dichloroethane-d4	62.4		ug/L	62.5		99.8	73.5-130			
Surrogate: Toluene-d8	59.1		"	62.5		94.6	79.3-113			
Surrogate: 4-Bromofluorobenzene	61.3		"	62.5		98.1	81.5-117			

Origins Laboratory, Inc.



The results in this report apply to the samples analyzed in accordance with the chain of custody document. This analytical report must be reproduced in its entirety.

Noelle E Doyle, Laboratory Manager

LT Environmental, Inc.
4600 West 60th Avenue
Arvada CO 80003

Matthew Harrison
Project Number: NEP0826
Project: Noble - Becky #2-6

Notes and Definitions

ND Analyte NOT DETECTED at or above the reporting limit
RPD Relative Percent Difference

Origins Laboratory, Inc.



The results in this report apply to the samples analyzed in accordance with the chain of custody document. This analytical report must be reproduced in its entirety.

Noelle E Doyle, Laboratory Manager