



02586022

FORM 4

Page 1

Rev 12/05

State of Colorado
Oil and Gas Conservation Commission

1120 Lincoln Street, Suite 801, Denver, Colorado 80203 Phone: (303) 894-2100 Fax: (303) 894-2109

SUNDRY NOTICE

Submit original plus one copy. This form is to be used for general, technical and environmental sundry information. For proposed or completed operations, describe in full on Technical Information Page (Page 2 of this form.) Identify well or other facility by API Number or by OGCC Facility ID. Operator shall send an informational copy of all sundry notices for wells located in High Density Areas to the Local Government Designee (Rule 603b.)

DE ET OF YES

RECEIVED

MAR 25 2009

COGCC

1. OGCC Operator Number : 100185

2. Name Of Operator : EnCana Oil & Gas (USA) Inc.

3. Address : 370 17th Street, Suite 1700

City : Denver

State :CO

Zip :80202

4. Contact Name :

MIRACLE PFISTER

Phone : 720-876-3761

Fax : 720-876-6060

5. API Number : 05045175750000

6. Well/Facility Name : GMR 34-12B (G33NW)

OGCC Facility ID Number 34-12B (G33NW)

7. Well/Facility Number : 34-12B (G33NW)

8. Location (Qtr/Qtr, Sec, Twp, Rng, Meridian) : SWNE Sec 33 T6S - R93W 6th PM

9. County : GARFIELD

10. Field Name : Mamm Creek

11. Federal, Indian or State Lease Number : COC56608E

Complete the Attachment
Checklist

Survey Plat	<input checked="" type="checkbox"/>	OP	OGCC
Directional Survey	<input checked="" type="checkbox"/>		
Surface Eqpm Diagram	<input type="checkbox"/>		
Technical Info Page	<input checked="" type="checkbox"/>		
Other	<input type="checkbox"/>		

General Notice

☒ CHANGE OF LOCATION: Attach New Survey Plat (a change of surface qtr/qtr is substantive and requires a new permit) FEL/FWL

Change of Surface Footage from Exterior Section Lines:

Change of Surface Footage to Exterior Section Lines:

Change of Bottomhole Footage from Exterior Section Lines:

Change of Bottomhole Footage to Exterior Section Lines:

Bottom hole location Qtr/Qtr, Sec, Twp, Rng, Mer NW/SW SEC 34 T6S-R93W 6TH PM

Latitude Distance to nearest property line

Longitude Distance to nearest lease line

Ground Elevation Distance to nearest well same formation 240

FWL

FWL

Distance to nearest bldg, public rd, utility or RR

35 Is location in a High Density Area (Rule 603b)? Yes/No N

Surface owner consultation date:

attach directional survey

GPS DATA:

Date of Measurement

PDOOP Reading

Instrument Operator's Name

☐ CHANGE SPACING UNIT

Formation Formation Code Spacing order number Unit Acreage Unit configuration

☐ Remove from surface bond

Signed surface use agreement attached

☐ CHANGE OF OPERATOR (prior to drilling):

☐ CHANGE WELL NAME

NUMBER

Effective Date :

From :

To :

Effective Date :

Plugging Bond : ☐ Blanket ☐ Individual

☐ ABANDONED LOCATION:

Was location ever built? ☐ Yes ☐ No

Is site ready for inspection? ☐ Yes ☐ No

Date Ready for inspection:

☐ NOTICE OF CONTINUED SHUT IN STATUS

Date well shut in or temporarily abandoned:

Has Production Equipment been removed from site? ☐ Yes ☐ No

MIT required if shut in longer than two years. Date of Last MIT

☐ SPUD DATE :

☐ REQUEST FOR CONFIDENTIAL STATUS: (6 mos from date casing set)

☐ SUBSEQUENT REPORT OF STAGE, SQUEEZE OR REMEDIAL CEMENT WORK

*submit cbl and cement job summaries

Method used Cementing tool setting/perf depth

Cement volume

Cement top

Cement bottom

Date

☐ RECLAMATION: Attach technical page describing final reclamation procedures per Rule 1004.

Final reclamation will commence on approximately ☐ Final reclamation is completed and site is ready for inspection.

Technical Engineering/Environmental Notice

☒ Notice of Intent

Approximate Start Date : 03/23/2009

☐ Report of Work Done

Date Work Completed :

Details of work must be described in full on Technical Information Page (Page 2 must be submitted.)

☐ Intent To Recomplete (submit form 2)

☒ Change Drilling Plans

☐ Gross Interval Changed?

☒ Casing/Cementing Program Change

☐ Request to Vent or Flare

☐ Repair Well

☐ Rule 502 variance requested

☐ Other :

☐ E&P Waste Disposal

☐ Beneficial Reuse of E&P Waste

☐ Status Update/Change of Remediation Plans for spills and Releases

I hereby certify that the statements made in this form are, to the best of my knowledge, true, correct and complete.

Signed:

Miracle Pfister

Date : 03/16/2009

Email: miracle.pfister@encana.com

Print Name : MIRACLE PFISTER

Title : REGULATORY ANALYST

COGCC Approved:

CONDITIONS OF APPROVAL IF ANY:

Title:

EIT II

Date:

5/26/2010

TECHNICAL INFORMATION PAGE

FOR OGCC USE ONLY

RECEIVED

MAR 25 2009

COGCC

1. OGCC Operator Number: 100185

2. Name of Operator: Encana Oil & Gas (USA) Inc.

3. Well/Facility Name: GMR 34-12B (G33NW)

4. Location (QtrQtr, Sec, Twp, Rng, Meridian): SWNE Sec 33 T6S - R93W 6th PM

API Number: 050451755000

OGCC Facility ID #: 34-12B (G33NW)

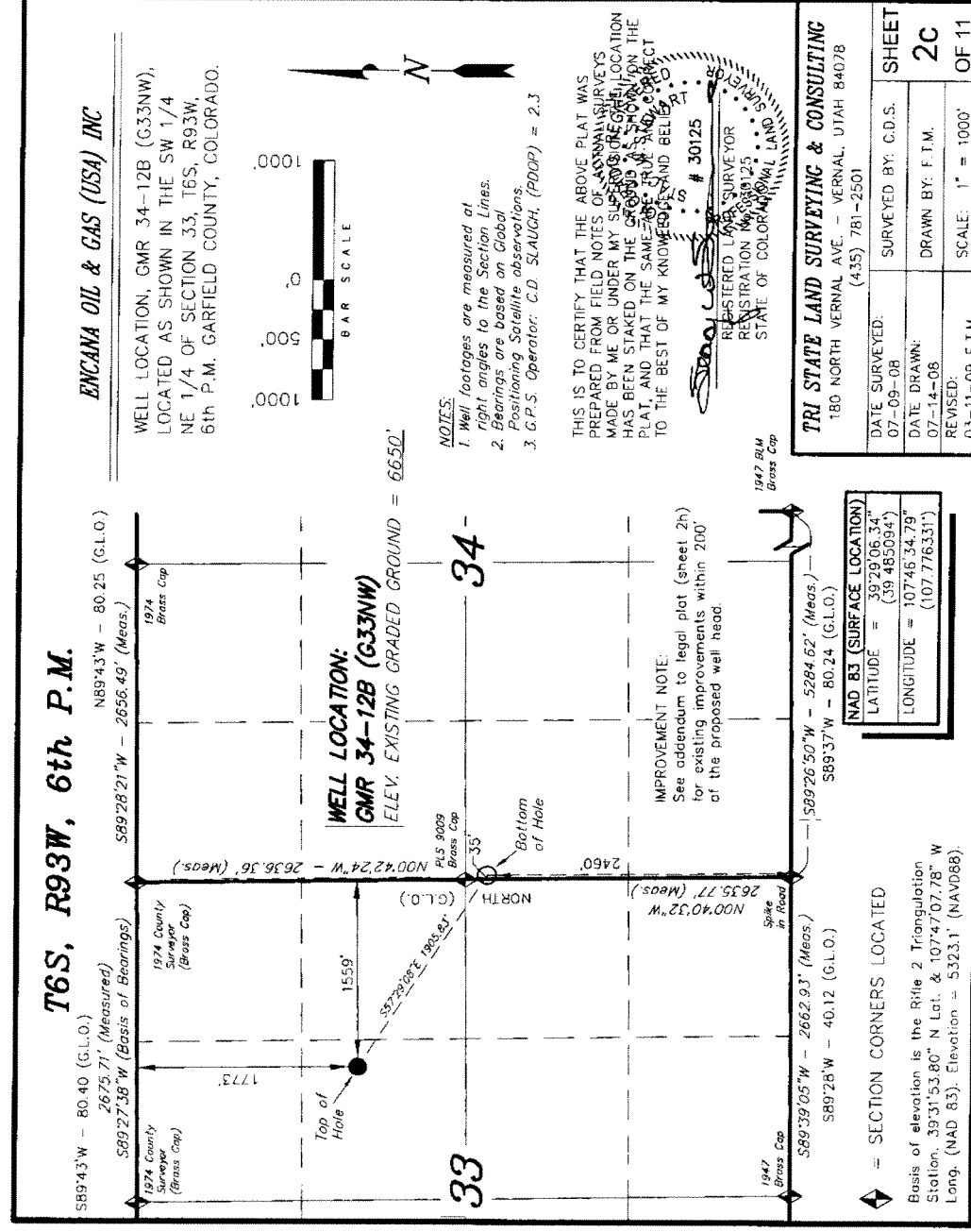
Well/Facility Number: 34-12B (G33NW)

This form is to be completed whenever a Sundry Notice is submitted requiring detailed report of work to be performed or completed. This form shall be transmitted within 30 days of work completed as a 'subsequent' report and must accompany Form 4, page 1.

5. DESCRIBE PROPOSED OR COMPLETED OPERATIONS
- ENCANA OIL & GAS (USA) WOULD LIKE TO MAKE THE FOLLOWING CHANGES TO THE TOTAL DEPTH & CASING PLANS FOR THE ABOVE REFERENCED WELL DUE TO THE CHANGE IN BOTTOM HOLE LOCATION:
- NEW TD IS 9072' TVD 9361' MD
- 4.5" PRODUCTION CASING WILL BE SET AT 9361' IN A 8 3/4" HOLE WITH 693 SKS CEMENT.



RECEIVED
MAR 25 2009
COGCC





RECEIVED

MAR 25 2009

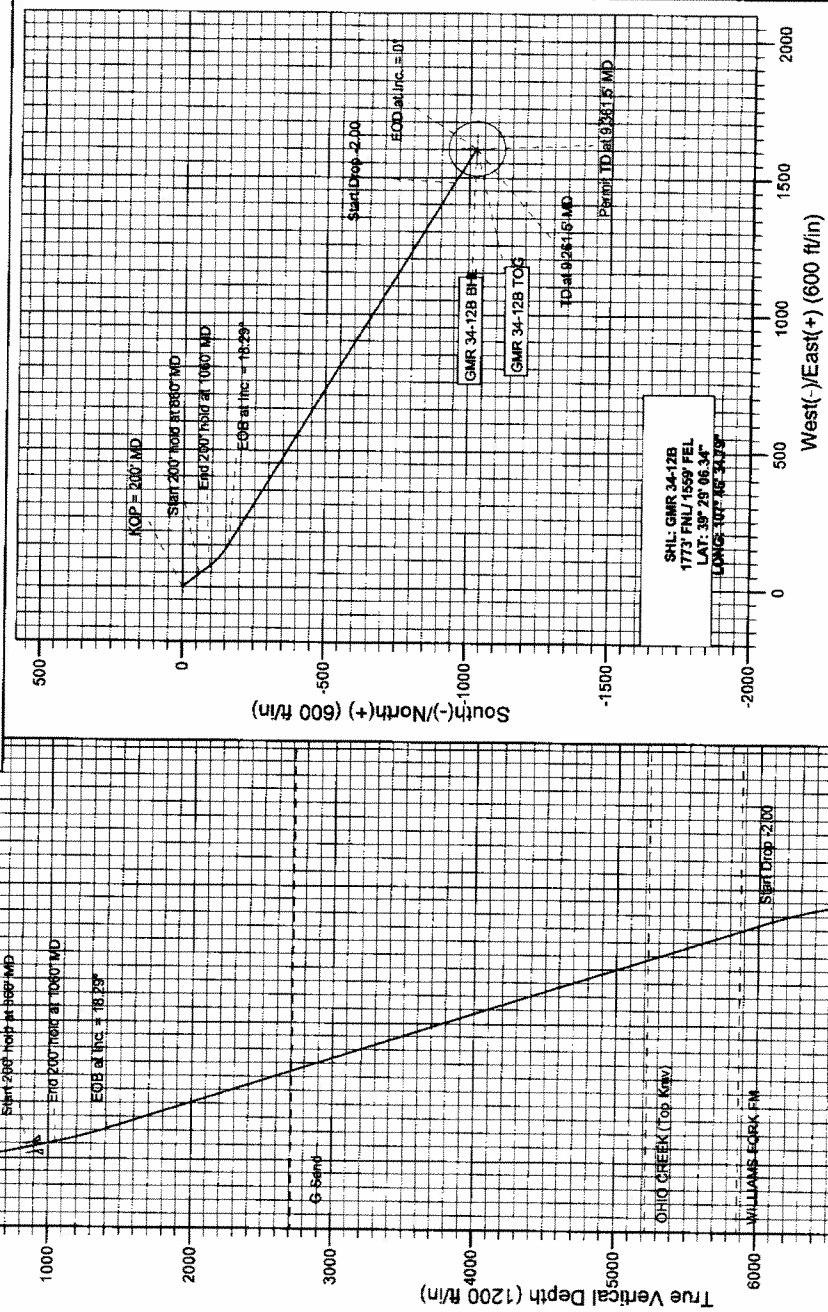


Project: Mamm Creek
Site: SWNE S33-T6S-R93W (G33NW)
Well: GMR 34-12B
Wellbore: DD
Design: Plan #5



A Division of Cathedral Energy Services Ltd.

SECTION DETAILS									
Sec	MD	Inc	Act	TVD	+N-S	+E-W	D Lag	T Face	V Sec
1	200.0	0.00	0.00	200.0	0.0	0.0	0.00	0.00	0.0
2	880.0	13.20	142.02	884.2	-59.7	46.6	0.00	0.00	0.0
3	1080.0	13.20	142.02	1048.9	-59.7	46.6	0.00	14.25	114.4
4	1441.4	18.29	120.70	1416.1	-160.6	453.0	2.00	-59.28	216.4
5	1780.4	18.29	120.70	1603.0	-160.6	453.0	2.00	-59.28	216.4
6	1905.0	0.00	0.00	1905.0	0.0	0.0	0.00	0.00	0.0
7	1905.0	0.00	0.00	1905.0	0.0	0.0	0.00	0.00	0.0
8	1905.0	0.00	0.00	1905.0	0.0	0.0	0.00	0.00	0.0
9	1905.0	0.00	0.00	1905.0	0.0	0.0	0.00	0.00	0.0

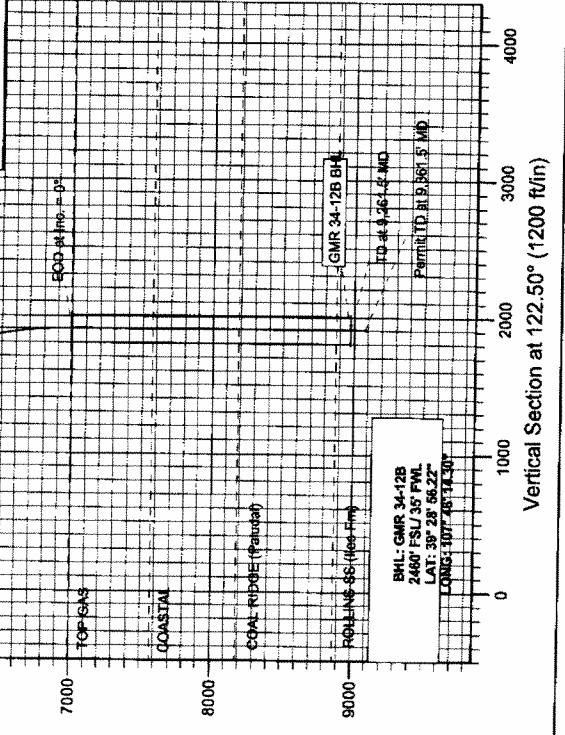


FORMATION TOP DETAILS	
TVD Path	Formation
2000.2	G Sand
2460.0	OHIO CREEK (Top Km)
9134.3	WILLIAMS FORK FM
7281.5	TOP GAS
7881.5	COASTAL
8471.5	COAL RIDGE (Falsal)
9161.5	ROLLINS SS (See Fin)



Azimuths to True North
Magnetic North: 10.52°
Magnetic Field
Strength: 52521.1snT
Dip Angle: 65.84°
Date: 3/12/2009
Model: GRF200510

DESIGN DETAILS: Plan #5			
95080; BH			
KBE @ 6672.0R (Nabors M15)			
Target GMR 34-12B BHL	Azimuth 122.50	Origin Type Spot	N/S 0.0
			E/W 0.0
			TVD 0.0



COMPASS 2003.21 Build 37

Planning Report

US EDM 2003.21 Multi User Db				Well GMR 34-12B			
EnCana Oil & Gas (USA) Inc				KBE @ 8872 OR (Nabors M15)			
Mamm Creek				KBE @ 8872 OR (Nabors M15)			
SWNE S33-T6S-R93W (G33NW)				True			
GMR 34-12B				Minimum Curvature			
DD							
Plan #5							
0.0	0.00	0.00	0.0	0.0	0.0	0.00	0.00
100.0	0.00	0.00	100.0	0.0	0.0	0.00	0.00
200.0	0.00	0.00	200.0	0.0	0.0	0.00	0.00
300.0	2.00	142.02	300.0	-1.4	1.1	1.6	2.00
400.0	4.00	142.02	399.8	-5.5	4.3	6.6	2.00
500.0	6.00	142.02	499.5	-12.4	9.7	14.8	2.00
600.0	8.00	142.02	598.7	-22.0	17.2	26.3	2.00
700.0	10.00	142.02	697.5	-34.3	26.8	41.0	2.00
800.0	12.00	142.02	795.6	-49.3	38.5	59.0	2.00
860.0	13.20	142.02	854.2	-59.7	46.6	71.3	2.00
900.0	13.20	142.02	893.1	-66.9	52.2	80.0	0.00
960.0	13.20	142.02	951.5	-77.7	60.6	92.9	0.00
1,000.0	13.20	142.02	980.5	-84.9	66.3	101.5	0.00
1,060.0	13.20	142.02	1,048.9	-95.7	74.7	114.4	0.00
1,100.0	13.63	139.10	1,087.8	-102.8	80.6	123.2	1.06
1,200.0	14.82	132.57	1,184.7	-120.4	97.7	147.1	1.20
1,300.0	16.18	127.06	1,281.1	-137.4	118.3	173.6	1.35
1,400.0	17.65	122.41	1,376.8	-154.0	142.2	202.6	1.47
1,441.4	18.29	120.70	1,416.1	-160.6	153.0	215.4	1.54
1,500.0	18.29	120.70	1,471.8	-170.0	168.9	233.8	0.00
1,600.0	18.29	120.70	1,566.8	-186.0	195.9	265.1	0.00
1,700.0	18.29	120.70	1,661.7	-202.1	222.8	296.5	0.00
1,800.0	18.29	120.70	1,756.6	-218.1	249.8	327.9	0.00
1,900.0	18.29	120.70	1,851.6	-234.1	276.8	359.2	0.00
2,000.0	18.29	120.70	1,946.5	-250.1	303.8	390.6	0.00
2,100.0	18.29	120.70	2,041.5	-266.2	330.8	422.0	0.00
2,200.0	18.29	120.70	2,136.4	-282.2	357.8	453.3	0.00
2,300.0	18.29	120.70	2,231.4	-298.2	384.7	484.7	0.00
2,400.0	18.29	120.70	2,326.3	-314.2	411.7	516.1	0.00
2,500.0	18.29	120.70	2,421.3	-330.2	438.7	547.4	0.00
2,600.0	18.29	120.70	2,516.2	-346.3	465.7	578.8	0.00
2,700.0	18.29	120.70	2,611.2	-362.3	492.7	610.2	0.00
2,800.0	18.29	120.70	2,706.1	-378.3	519.7	641.5	0.00
2,806.2	18.29	120.70	2,712.0	-379.3	521.3	643.5	0.00
2,900.0	18.29	120.70	2,801.1	-394.3	546.6	672.9	0.00
3,000.0	18.29	120.70	2,896.0	-410.3	573.6	704.3	0.00
3,100.0	18.29	120.70	2,991.0	-426.4	600.6	735.6	0.00
3,200.0	18.29	120.70	3,085.9	-442.4	627.6	767.0	0.00
3,300.0	18.29	120.70	3,180.9	-458.4	654.6	798.4	0.00
3,400.0	18.29	120.70	3,275.8	-474.4	681.6	829.7	0.00
3,500.0	18.29	120.70	3,370.8	-490.5	708.6	861.1	0.00
3,600.0	18.29	120.70	3,465.7	-506.5	735.5	892.5	0.00
3,700.0	18.29	120.70	3,560.7	-522.5	762.5	923.8	0.00
3,800.0	18.29	120.70	3,655.6	-538.5	789.5	955.2	0.00
3,900.0	18.29	120.70	3,750.6	-554.5	816.5	986.6	0.00
4,000.0	18.29	120.70	3,845.5	-570.6	843.5	1,017.9	0.00
4,100.0	18.29	120.70	3,940.5	-586.6	870.5	1,049.3	0.00
4,200.0	18.29	120.70	4,035.4	-602.6	897.4	1,080.7	0.00
4,300.0	18.29	120.70	4,130.4	-618.6	924.4	1,112.0	0.00
4,400.0	18.29	120.70	4,225.3	-634.7	951.4	1,143.4	0.00
4,500.0	18.29	120.70	4,320.2	-650.7	978.4	1,174.8	0.00
4,600.0	18.29	120.70	4,415.2	-666.7	1,005.4	1,206.1	0.00

Planning Report

Distance	US EDM 2003.21 Multi User Db	Local Coordinates Station	True	Minimum Curvature					
Cuttings	EnCana Oil & Gas (USA) Inc	TVD Reference							
Program	Mainm Creek	NED Reference							
Sun	SWNE S33-T6S-R93W (G33NW)	North Reference							
Wind	GMR 34-12B	Survey Calculations							
Weather	DD								
Date	Plan #5								
4,700.0	18.29	120.70	4,510.1	-682.7	1,032.4	1,237.5	0.00	0.00	OHIO CREEK (Top KmV)
4,800.0	18.29	120.70	4,605.1	-688.7	1,059.3	1,268.9	0.00	0.00	
4,900.0	18.29	120.70	4,700.0	-714.8	1,086.3	1,300.2	0.00	0.00	
5,000.0	18.29	120.70	4,795.0	-730.8	1,113.3	1,331.6	0.00	0.00	
5,100.0	18.29	120.70	4,889.9	-746.8	1,140.3	1,363.0	0.00	0.00	
5,200.0	18.29	120.70	4,984.9	-762.8	1,167.3	1,394.3	0.00	0.00	
5,300.0	18.29	120.70	5,079.8	-778.8	1,194.3	1,425.7	0.00	0.00	
5,400.0	18.29	120.70	5,174.8	-794.9	1,221.2	1,457.1	0.00	0.00	
5,449.7	18.29	120.70	5,222.0	-802.8	1,234.7	1,472.7	0.00	0.00	
5,500.0	18.29	120.70	5,269.7	-810.9	1,248.2	1,488.4	0.00	0.00	
5,600.0	18.29	120.70	5,364.7	-826.9	1,275.2	1,519.8	0.00	0.00	
5,700.0	18.29	120.70	5,459.6	-842.9	1,302.2	1,551.2	0.00	0.00	
5,800.0	18.29	120.70	5,554.6	-859.0	1,329.2	1,582.5	0.00	0.00	
5,900.0	18.29	120.70	5,649.5	-875.0	1,356.2	1,613.9	0.00	0.00	
6,000.0	18.29	120.70	5,744.5	-891.0	1,383.2	1,645.3	0.00	0.00	
6,100.0	18.29	120.70	5,839.4	-907.0	1,410.1	1,676.6	0.00	0.00	
6,134.3	18.29	120.70	5,872.0	-912.5	1,419.4	1,687.4	0.00	0.00	WILLIAMS FORK FM
6,200.0	18.29	120.70	5,934.4	-923.0	1,437.1	1,708.0	0.00	0.00	
6,300.0	18.29	120.70	6,029.3	-939.1	1,464.1	1,739.4	0.00	0.00	
6,367.0	18.29	120.70	6,093.0	-949.8	1,482.2	1,760.4	0.00	0.00	Start Drop -2.00
6,400.0	17.63	120.70	6,124.3	-955.0	1,490.9	1,770.6	2.00	-2.00	
6,500.0	15.63	120.70	6,220.1	-969.6	1,515.5	1,795.2	2.00	-2.00	
6,600.0	13.63	120.70	6,316.9	-982.5	1,537.3	1,824.4	2.00	-2.00	
6,700.0	11.63	120.70	6,414.5	-993.7	1,556.1	1,846.3	2.00	-2.00	
6,800.0	9.63	120.70	6,512.7	-1,003.1	1,571.9	1,864.7	2.00	-2.00	
6,900.0	7.63	120.70	6,611.6	-1,010.7	1,584.8	1,879.7	2.00	-2.00	
7,000.0	5.63	120.70	6,710.9	-1,016.6	1,594.7	1,891.2	2.00	-2.00	
7,100.0	3.63	120.70	6,810.6	-1,020.8	1,601.7	1,899.3	2.00	-2.00	
7,200.0	1.63	120.70	6,910.5	-1,023.1	1,605.6	1,903.9	2.00	-2.00	EOD at Inc. = 0° - TOP GAS - GMR 34-12B TO
7,281.5	0.00	0.00	6,992.0	-1,023.7	1,606.6	1,905.0	0.00	0.00	
7,300.0	0.00	0.00	7,010.5	-1,023.7	1,606.6	1,905.0	0.00	0.00	
7,400.0	0.00	0.00	7,110.5	-1,023.7	1,606.6	1,905.0	0.00	0.00	
7,500.0	0.00	0.00	7,210.5	-1,023.7	1,606.6	1,905.0	0.00	0.00	
7,600.0	0.00	0.00	7,310.5	-1,023.7	1,606.6	1,905.0	0.00	0.00	
7,700.0	0.00	0.00	7,410.5	-1,023.7	1,606.6	1,905.0	0.00	0.00	
7,800.0	0.00	0.00	7,510.5	-1,023.7	1,606.6	1,905.0	0.00	0.00	
7,861.5	0.00	0.00	7,572.0	-1,023.7	1,606.6	1,905.0	0.00	0.00	COASTAL
7,900.0	0.00	0.00	7,610.5	-1,023.7	1,606.6	1,905.0	0.00	0.00	
8,000.0	0.00	0.00	7,710.5	-1,023.7	1,606.6	1,905.0	0.00	0.00	
8,100.0	0.00	0.00	7,810.5	-1,023.7	1,606.6	1,905.0	0.00	0.00	
8,200.0	0.00	0.00	7,910.5	-1,023.7	1,606.6	1,905.0	0.00	0.00	
8,300.0	0.00	0.00	8,010.5	-1,023.7	1,606.6	1,905.0	0.00	0.00	
8,400.0	0.00	0.00	8,110.5	-1,023.7	1,606.6	1,905.0	0.00	0.00	
8,471.5	0.00	0.00	8,182.0	-1,023.7	1,606.6	1,905.0	0.00	0.00	COAL RIDGE (Paludal)
8,500.0	0.00	0.00	8,210.5	-1,023.7	1,606.6	1,905.0	0.00	0.00	
8,600.0	0.00	0.00	8,310.5	-1,023.7	1,606.6	1,905.0	0.00	0.00	
8,700.0	0.00	0.00	8,410.5	-1,023.7	1,606.6	1,905.0	0.00	0.00	
8,800.0	0.00	0.00	8,510.5	-1,023.7	1,606.6	1,905.0	0.00	0.00	
8,900.0	0.00	0.00	8,610.5	-1,023.7	1,606.6	1,905.0	0.00	0.00	
9,000.0	0.00	0.00	8,710.5	-1,023.7	1,606.6	1,905.0	0.00	0.00	
9,100.0	0.00	0.00	8,810.5	-1,023.7	1,606.6	1,905.0	0.00	0.00	
9,161.5	0.00	0.00	8,872.0	-1,023.7	1,606.6	1,905.0	0.00	0.00	ROLLINS SS (fies Fm)

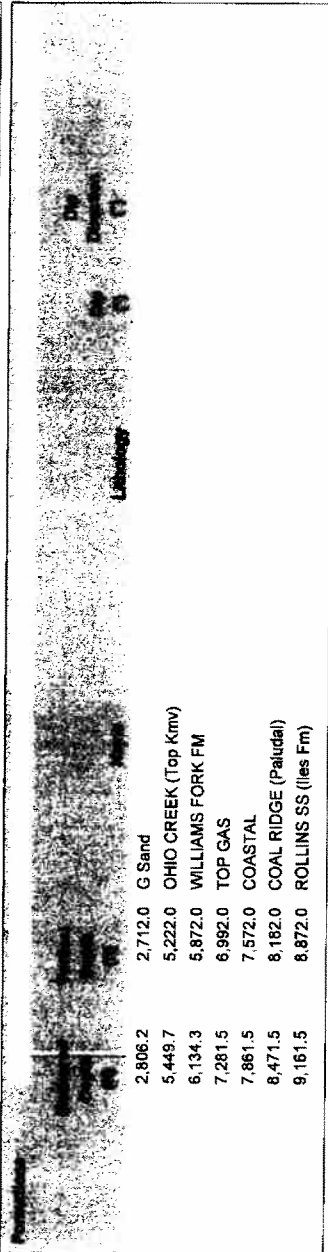
Planning Report

US EDM 2003.21 Multi User Db
EnCana Oil & Gas (USA) Inc
Marrm Creek
SWNE S33-T6S-R93W (G33NW)
GMR 34-12B
DD
Plan #5

Local Co-ordinate References
TVD Reference:
MD Reference:
North Reference:
Survey Calculation Method:
Well GMR 34-12B
KBE @ 6672.0ft (Nabors M15)
KBE @ 6672.0ft (Nabors M15)
True
Minimum Curvature

				Vertical Section ft	Depth from CPI/MS ft	Correction/ Remarks
9,200.0	0.00	0.00	8,910.5	-1,023.7	1,606.6	1,905.0 0.00
9,261.5	0.00	0.00	8,972.0	-1,023.7	1,606.6	1,905.0 0.00 TD at 9,261.5' MD - GMR 34-12B BHL
9,300.0	0.00	0.00	9,010.5	-1,023.7	1,606.6	1,905.0 0.00
9,361.5	0.00	0.00	9,072.0	-1,023.7	1,606.6	1,905.0 0.00 Permit TD at 9,361.5' MD

GMR 34-12B TOG - plan hits target center - Point	0.00	0.00	6,992.0	-1,023.7	1,606.6	1,608,562.92	2,359,171.21	39° 28' 56.22 N	107° 46' 14.30 W
GMR 34-12B BHL - plan hits target center - Circle (radius 100.0)	0.00	0.00	8,972.0	-1,023.7	1,606.6	1,608,562.92	2,359,171.21	39° 28' 56.22 N	107° 46' 14.30 W



				Vertical Section ft	Depth from CPI/MS ft	Correction/ Remarks
200.0	200.0	0.0	0.0	0.0	0.0	KOP = 200' MD
860.0	854.2	-59.7	-59.7	46.6	0.0	Start 200' hold at 860' MD
1,060.0	1,048.9	-95.7	-95.7	74.7	0.0	End 200' hold at 1060' MD
1,441.4	1,416.1	-160.6	-160.6	153.0	0.0	EOB at Inc. = 18.29°
6,367.0	6,093.0	-949.8	-949.8	1,482.2	0.0	Start Drop -2.00
7,281.5	6,992.0	-1,023.7	-1,023.7	1,606.6	0.0	EOD at Inc. = 0°
9,261.5	8,972.0	-1,023.7	-1,023.7	1,606.6	0.0	TD at 9,261.5' MD
9,361.5	9,072.0	-1,023.7	-1,023.7	1,606.6	0.0	Permit TD at 9,361.5' MD