



**TECHNICAL INFORMATION PAGE**



FOR OGCC USE ONLY

**RECEIVED**

JUL 02 2010

OGCC/Rifle Office

1. OGCC Operator Number: 10205 API Number: 05-081-07432  
2. Name of Operator: New Frontier Energy, Inc. OGCC Facility ID #  
3. Well/Facility Name: Battle Mountain Federal Well/Facility Number: 14-15  
4. Location (Qtr, Sec Twp, Rng, Meridian): SW 1/4 SE 1/4 Sec. 14 T 12N R 89W 6th PM

This form is to be completed whenever a Sundry Notice is submitted requiring detailed report of work to be performed or completed. This form shall be transmitted within 30 days of work completed as a "subsequent" report and must accompany Form 4, page 1.

**5.**

**DESCRIBE PROPOSED OR COMPLETED OPERATIONS**

**Description of Project:** Pull 4-1/2" perforated (uncemented) liner, clean out to total depth, drill additional 114', log hole from TD to intermediate casing shoe (6,090'), run slotted liner, test Niobrara potential

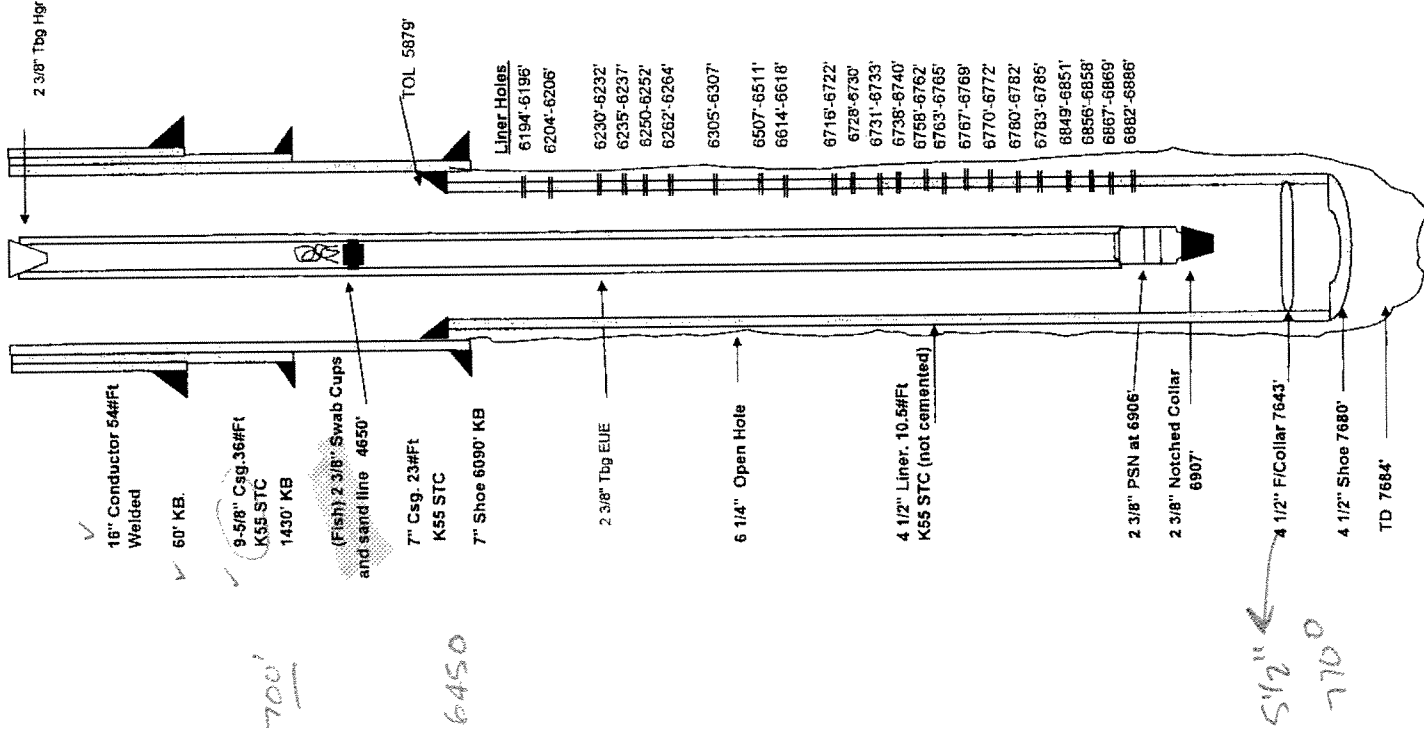
**Well Status:** Battle Mountain Federal 14-15, API No. 05-081-07432, currently has a 4-1/2" liner set from 5,879' - 7,680' with several Niobrara zones perforated. The liner is not cemented. Tubing (2-3/8") is hanging in the hole at a total depth of 6,907'

Completion Procedures:

1. Conduct premobilization safety and procedures orientation and safety meeting. Document with signatures.
2. Check well for pressure. Record any pressure on report and bleed off.
3. Rig up Boelens Well Service Rig equipped with blow out preventers, power swivel and mud tank.
4. Trip out of hole, lay down 2-3/8" tubing. Look for and remove swab cup at  $\pm 4,650'$ .
5. Pick up spear, jars and 2-7/8" drill pipe. TIH and spear into hanger at 5,879'.
6. Pull liner slowly while monitoring fluid level. (if liner will not move, contact Denver). Set back 2-7/8" drill pipe and lay down 4-1/2" casing.
7. Pick up 6-1/4" bit and drill collars, clean and ream to TD (7,684'). Drill 114 feet to a new total depth of 7,800'. Circulate hole clean. Drop survey prior to TOH.
8. TOH with 2-7/8" drill pipe. Stand back 2-7/8" drill pipe, lay down collars.
9. Log open hole with XRMt, Di-Pole Sonic and Triple Combo (Be prepared to cut sidewall cores as directed by Denver).
10. Make up slotted / solid liner per instructions from Denver. Run liner in hole. Set liner hanger  $\pm 5,800'$ .
11. Set liner and TOH, laying down 2-7/8" drill pipe.
12. Pick up 2-7/8" production tubing with seating nipple and tubing anchor and TIH. Set  $\pm 50'$  above liner hanger.
13. Remove BOP, nipple up well head and swab test.
14. If well will flow, release rig, continue to produce to test facilities while building lateral ( $\pm 1,500'$ ).
15. If well flows, TIH with pressure gauge, hang in seating nipple and run 3 day flow test and 3 day shut-in pressure buildup.
16. If well will not flow, run pump and rods.
17. Install surface facilities, tanks and necessary lateral lines. Put well on production.
18. Inventory all un-used equipment. Note final destination of equipment.

COGCC/Rifle Office

## COMPLETION EQUIPMENT

[illegible]