

T7N, R93W, 6th P.M.

FOUNDATION ENERGY MANAGEMENT

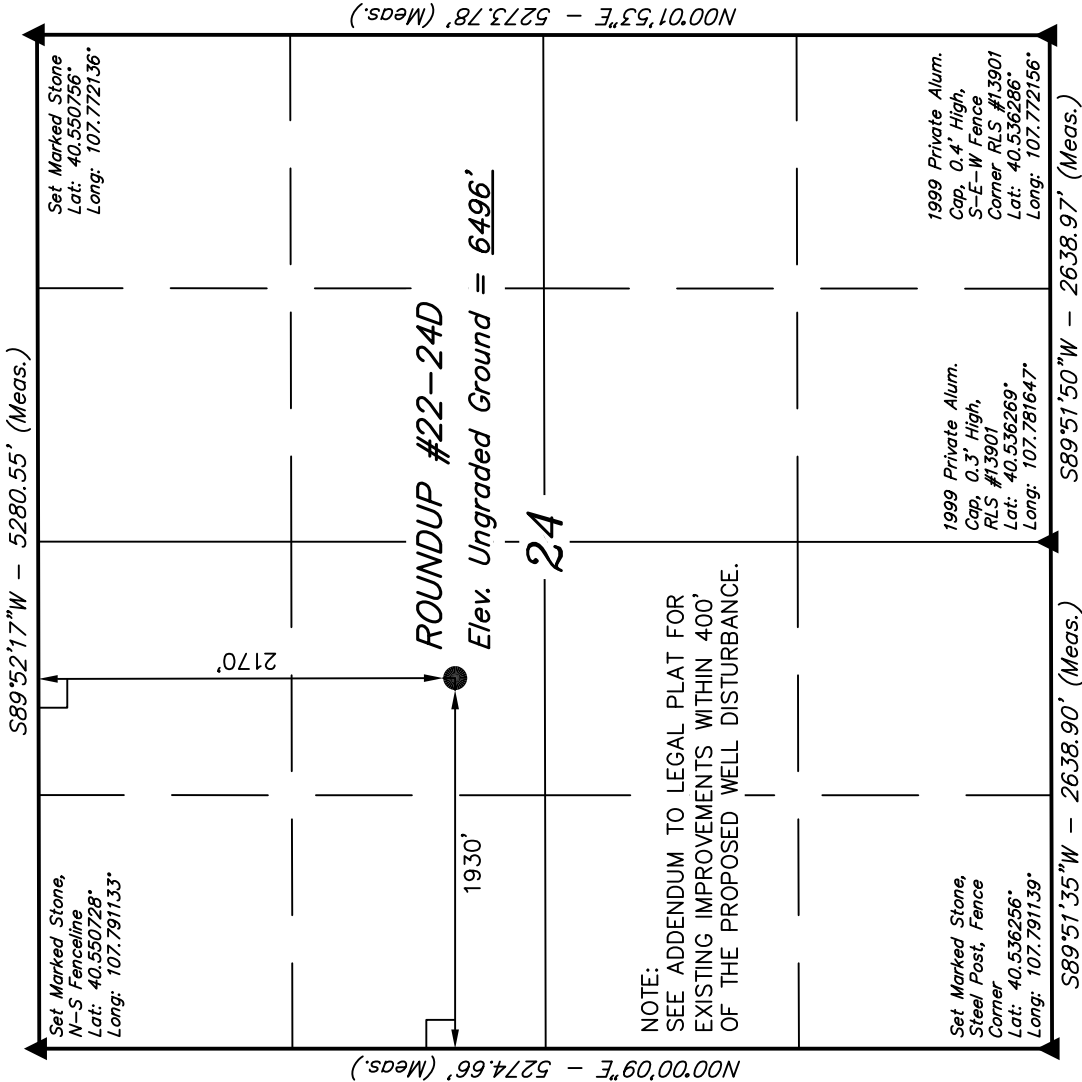
Well location, ROUNDUP #22-24D, located as shown in the SE 1/4 NW 1/4 of Section 24, T7N, R93W, 6th P.M., Moffat County, Colorado.

BASIS OF ELEVATION

SPOT ELEVATION LOCATED AT THE NORTHEAST CORNER OF SECTION 10, T6N, R93W, 6th P.M. TAKEN FROM THE HORSE GULCH QUADRANGLE, COLORADO, MOFFAT COUNTY, 7.5 MINUTE QUAD (TOPOGRAPHIC MAP) PUBLISHED BY THE UNITED STATES DEPARTMENT OF THE INTERIOR, GEOLOGICAL SURVEY. SAID ELEVATION IS MARKED AS BEING 6246 FEET.

BASIS OF BEARINGS

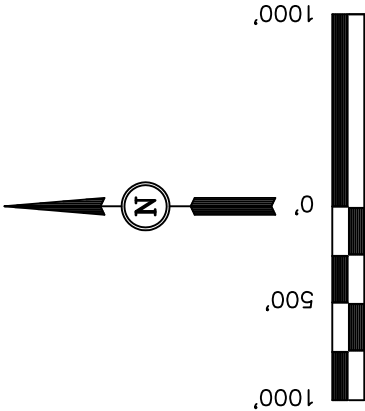
BASIS OF BEARINGS IS A G.P.S. OBSERVATION.



LEGEND:

- 90° SYMBOL
- PROPOSED WELL HEAD.
- SECTION CORNERS LOCATED.

(NAD 83)  
LATITUDE = 40°32'41.22" (40.544783)  
LONGITUDE = 107°47'03.09" (107.784192)  
(NAD 27)  
LATITUDE = 40°32'41.33" (40.544814)  
LONGITUDE = 107°47'00.83" (107.783564)



SCALE

CERTIFICATE

THIS IS TO CERTIFY THAT THE ABOVE PLAT WAS PREPARED FROM FIELD NOTES OF ACTUAL SURVEYS MADE BY ME OR UNDER MY SUPERVISION AND THAT THE SAME ARE TRUE AND CORRECT TO THE BEST OF MY KNOWLEDGE AND BELIEF.

REGISTERED LAND SURVEYOR  
REGISTRATION NO. 17492  
STATE OF COLORADO

UNTAH ENGINEERING & LAND SURVEYING

85 SOUTH 200 EAST - VERNAL, UTAH 84078

(435) 789-1017

SCALE 1" = 1000'	DATE SURVEYED: 07-29-10	DATE DRAWN: 08-04-10
PARTY B.B. B.H. C.C.	REFERENCES G.L.O. PLAT	
WEATHER HOT	FILE	FOUNDATION ENERGY MANAGEMENT

# FOUNDATION ENERGY MANAGEMENT

## ADDENDUM TO LEGAL PLAT FOR

ROUNDUP #22-24D

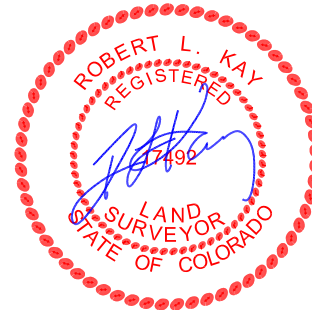
SECTION 24, T7N, R93W, 6th P.M.

2170' FNL 1930' FWL

SCALE: 1" = 50'

DATE: 08-04-10

DRAWN BY: C.C.



400' Offset  
from Edge of  
Disturbance

Reserve Pit  
Backfill & Spoils  
Stockpile

400'

Pit Topsoil

**WELL HEAD #22-24H**

(NAD 83)

Latitude: 40.544783°

Longitude: 107.784192°

LINE TABLE			
LINE	BEARING	LENGTH	FEATURE
L1	N78°26'20"W	43.68'	EDGE OF EXISTING PAD
L2	N29°50'22"E	511.38'	DRAINAGE
L3	N87°21'50"E	277.84'	DRAINAGE
L4	S11°01'19"E	151.36'	EXISTING ROAD
L5	S47°42'40"W	290.87'	DRAINAGE
L6	N88°34'02"W	370.39'	DRAINAGE

SURFACE USE OF LOCATION IS GRAZING,  
VEGETATION CONSISTS MAINLY OF  
NATIVE GRASSES.

UINTAH ENGINEERING & LAND SURVEYING  
85 So. 200 East \* Vernal, Utah 84078 \* (435) 789-1017