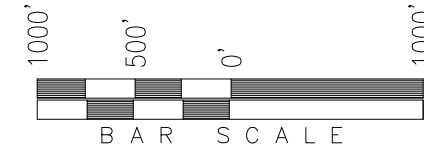


**T1S, R97W, 6th P.M.**

**EXXON MOBIL CORPORATION**

WELL LOCATION, NORTH PICEANCE UNIT  
197-12A1, LOCATED AS SHOWN IN THE NW 1/4  
SE 1/4 (LOT 10) OF SECTION 12, T1S, R97W,  
6th P.M. RIO BLANCO COUNTY, COLORADO.



◆ = SECTION CORNERS LOCATED

**BASIS OF BEARINGS & BASIS OF ELEVATION**

BASIS OF BEARINGS IS A LINE BETWEEN MAGNOLIA & MEYERS TRIANGULATION STATION GRID COORDINATES WHICH IS ASSUMED TO BEAR S82°36'07"E.

BASIS OF ELEVATIONS IS MAGNOLIA TRIANGULATION STATION LOCATED IN THE NW 1/4 OF SECTION 9, T2S, R97W, 6th P.M. REPORTED FROM THE NATIONAL GEODETIC SURVEY AS BEING 7529 FEET (NAVD 88). WE MEASURED IT TO BE 7526.2'

**NOTES:**

1. Well footages are measured at right angles to the Section Lines.
2. Bearings are based on Global Positioning Satellite observations.
3. G.P.S. Operator: D. PETTY, (PDOP) = 2.4

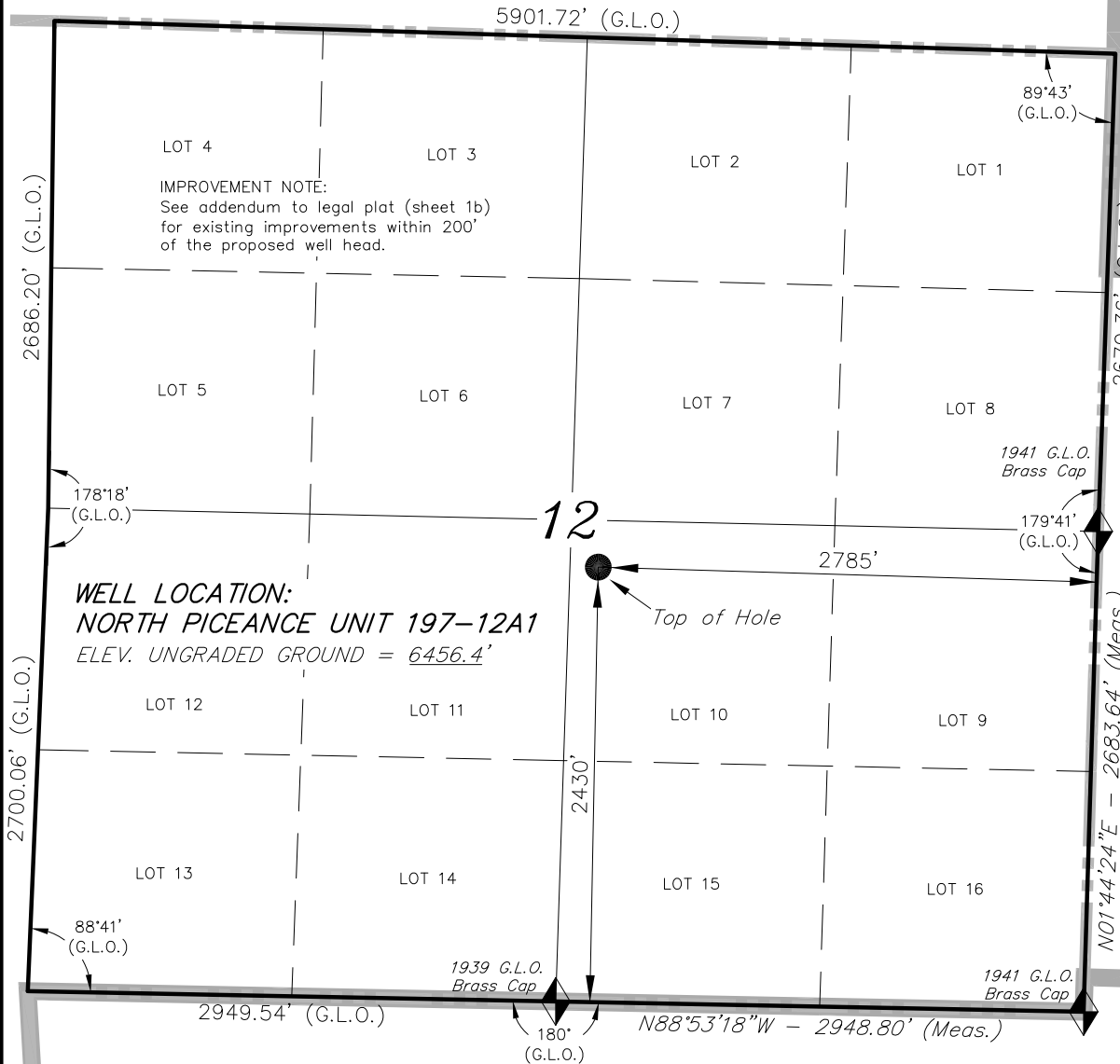
THIS IS TO CERTIFY THAT THE ABOVE PLAT WAS PREPARED FROM FIELD NOTES OF ACTUAL SURVEYS MADE BY ME OR UNDER MY SUPERVISION, THE LOCATION HAS BEEN CHECKED ON THE GROUND AS SHOWN ON THE PLAT, AND THAT THE SAME ARE TRUE AND CORRECT TO THE BEST OF MY KNOWLEDGE AND BELIEF.

*[Signature]*  
REGISTERED LAND SURVEYOR  
REGISTRATION NO. 30125  
STATE OF COLORADO

**TRI STATE LAND SURVEYING & CONSULTING**

180 NORTH VERNAL AVE. - VERNAL, UTAH 84078  
(435) 781-2501

DATE SURVEYED: 05-04-09	SURVEYED BY: D.P.	SHEET 1a
DATE DRAWN: 05-05-09	DRAWN BY: D.COX	
REVISED: 01-25-10 F.T.M.	SCALE: 1" = 1000'	



IMPROVEMENT NOTE:  
See addendum to legal plat (sheet 1b)  
for existing improvements within 200'  
of the proposed well head.

**WELL LOCATION:**  
**NORTH PICEANCE UNIT 197-12A1**  
ELEV. UNGRADED GROUND = 6456.4'

CO-NORTH NAD 83 (SURFACE LOCATION)	
LATITUDE = 39°58'43.28" (39.978689)	
LONGITUDE = 108°13'44.56" (108.229045)	
STATE PLANE COORDINATES	
N: = 1246851.492	E: = 2235330.174
CO-NORTH NAD 27 (SURFACE LOCATION)	
LATITUDE = 39°58'43.38" (39.978718)	
LONGITUDE = 108°13'42.25" (108.228404)	
STATE PLANE COORDINATES	
N: = 246852.265	E: = 1235489.926

FROM SURFACE LOCATION TO NEAREST:	
TOWN/COMMUNITY: 17.2 MILES NE TO MEEKER	
UNIT BOUNDARY: ±2,430' SLY TO BOUNDARY	
UNIT BOUNDARY: ±24,004' ELY TO BOUNDARY	
LEASE BOUNDARY: ±2,430' NLY TO BOUNDARY	
LEASE BOUNDARY: ±2,785' ELY TO BOUNDARY	
EXISTING WELL: S88°W ±7,585' TO 1 SQUARE S HERRING	