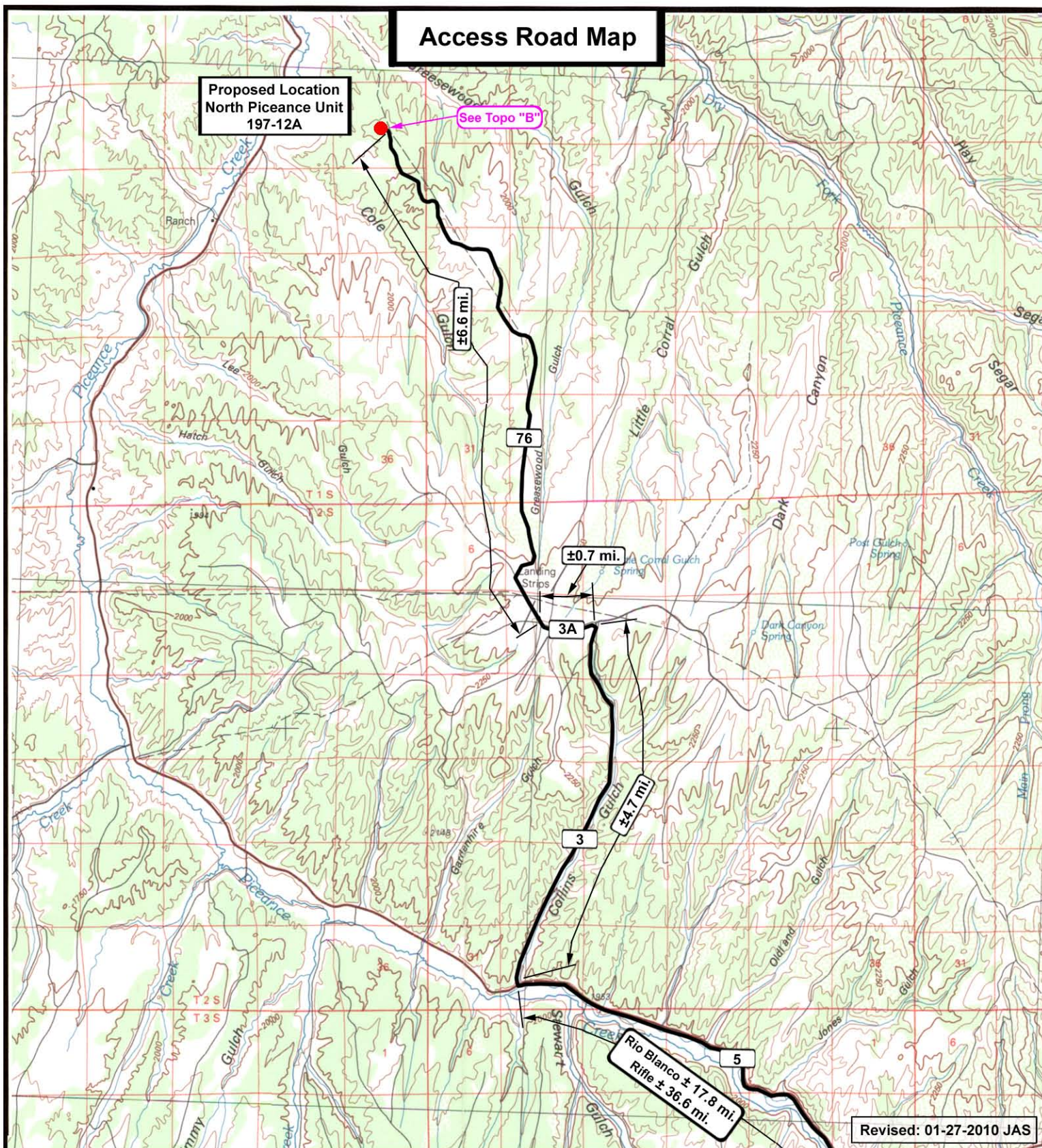


Access Road Map

**Proposed Location
North Piceance Unit
197-12A**

See Topo "B"



Revised: 01-27-2010 JAS

Exxon Mobil Corporation

**North Piceance Unit 197-12A
SEC. 12, T1S, R97W, 6th P.M.**



 **Tri-State**
Land Surveying Inc.
(435) 781-2501
180 North Vernal Ave. Vernal, Utah 84078

SCALE:	1 : 100,000
DRAWN BY:	JAS
DATE:	04-28-2009

Legend

 Existing Road
 Proposed Access

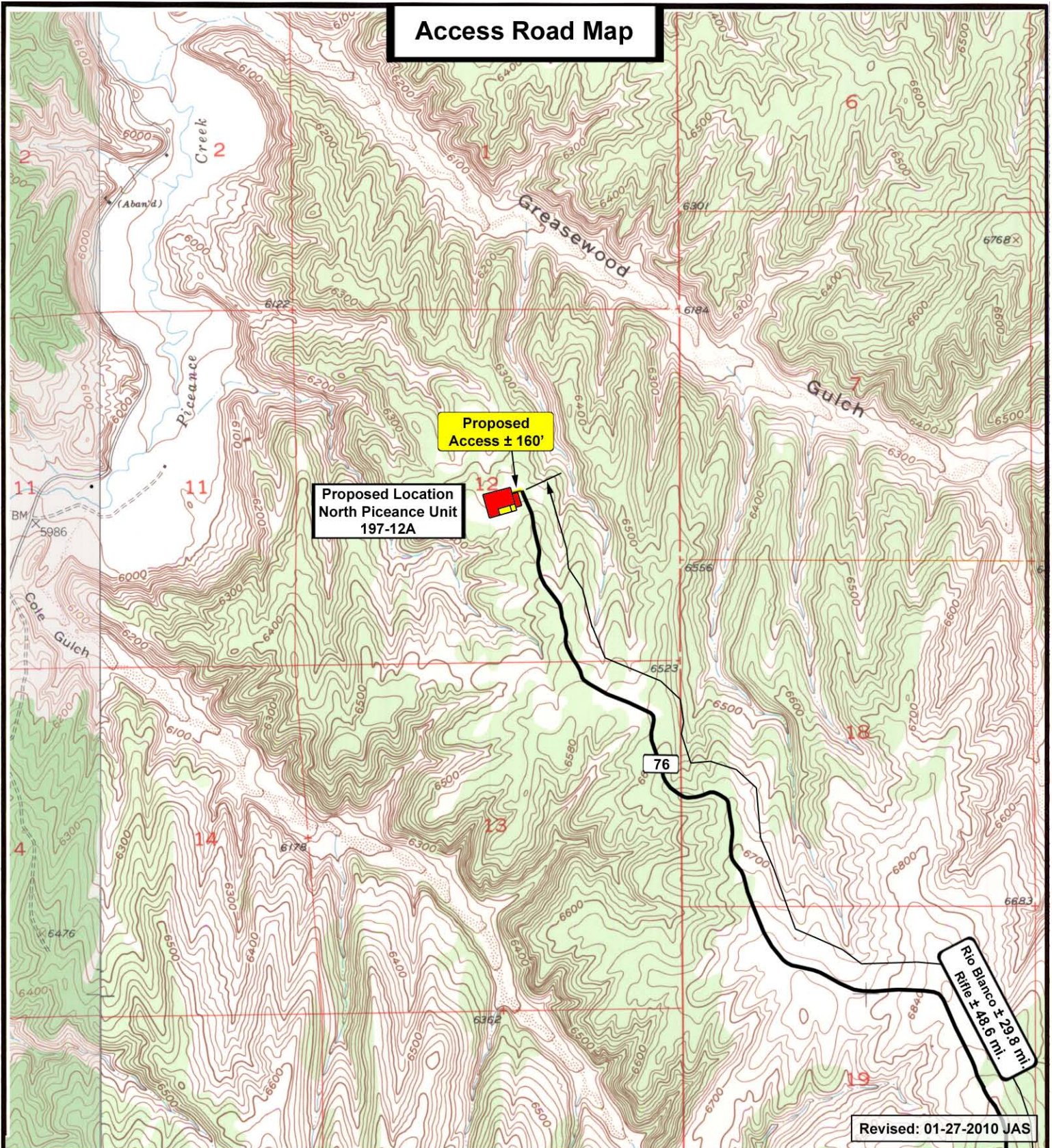
TOPOGRAPHIC MAP

"A"

SHEET

6

Access Road Map



Exxon Mobil Corporation

**North Piceance Unit 197-12A
SEC. 12, T1S, R97W, 6th P.M.**



**Tri-State
Land Surveying Inc.**
(435) 781-2501
180 North Vernal Ave. Vernal, Utah 84078

SCALE: 1" = 2,000'
DRAWN BY: JAS
DATE: 04-28-2009

Legend

Existing Road
Proposed Access

TOPOGRAPHIC MAP
"B"
SHEET 7