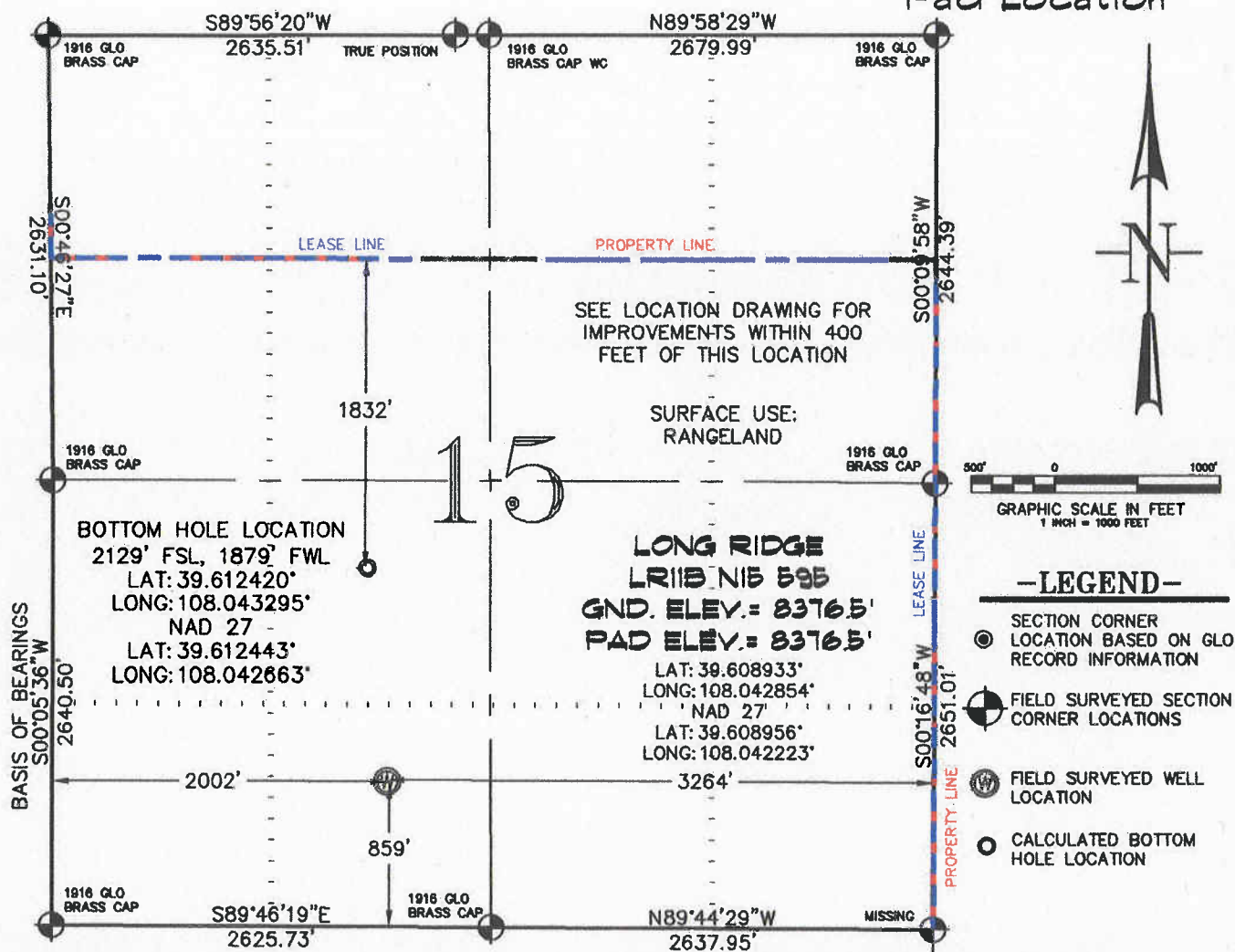


SEC. 15, T. 5 S., R. 95 W. OF THE 6TH P.M. Long Ridge N15-595  
Pad Location



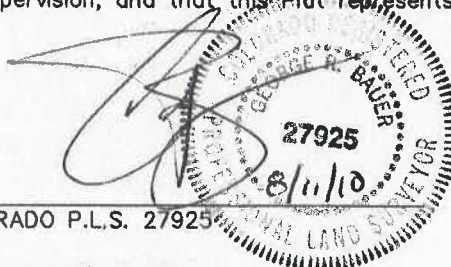
THIS WELL LOCATION PLAT WAS PREPARED FOR BERRY PETROLEUM COMPANY TO LOCATE THE LONG RIDGE LR11B N15 595 WELL, 859 FEET FROM THE SOUTH LINE AND 2002 FEET FROM THE WEST LINE IN THE SE1/4 SW1/4 OF SECTION 15, T. 5 S., R. 95 W. OF THE 6TH P.M. GARFIELD COUNTY, COLORADO.

REFERENCE NOTES

- 1) T. 5 S., R. 95 W., 6TH P.M. GLO PLAT.
- 2) U.S.G.S. QUAD: FORKED GULCH, CO
- 3) ELEVATIONS BASED ON N.A.V.D. 1988
- 4) LATITUDES AND LONGITUDES ARE BASED ON NAD 83, COLORADO CENTRAL ZONE.
- 5) GPS OPERATOR IVAN MARTIN, OBSERVED A PDOP OF 2.4.
- 6) ALL GPS OBSERVATIONS ARE IN COMPLIANCE WITH COGCC RULE NO. 215.
- 7) SURFACE AND BOTTOM HOLE LOCATIONS ARE MEASURED 90° FROM SECTION LINES.

SURVEYOR'S CERTIFICATE

I, George R. Bauer: a Professional Land Surveyor in the State of Colorado do hereby certify that this Survey was made under my direct supervision, and that this Plat represents said Survey.



COLORADO P.L.S. 27925

VIEW: 1C



CONSTRUCTION SURVEYS, INC.

0012 SUNRISE BLVD.  
SILT, CO 81652  
(970) 876-5753

SURVEYED: 06/22/10	SCALE: 1" = 1000'
DRAFTED: 07/01/10	DWG: Berry/LongRidgeN15-595.dwg
REVISED: 08/10/10	SHEET: 1 of 11