

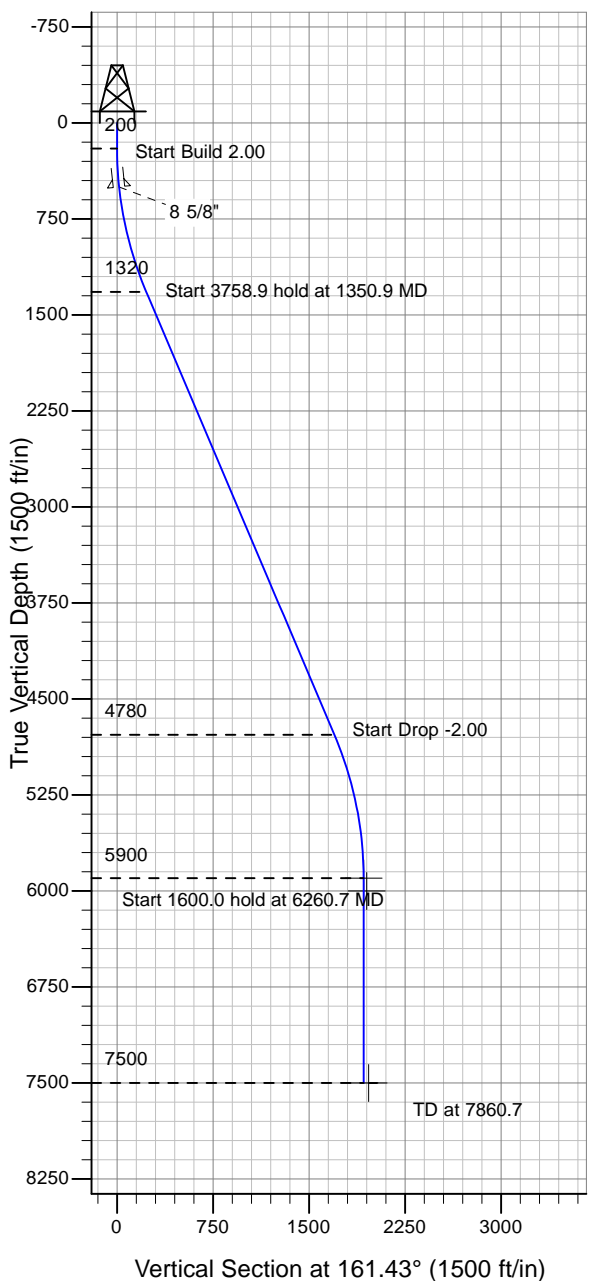
# ENSIGN

## Directional

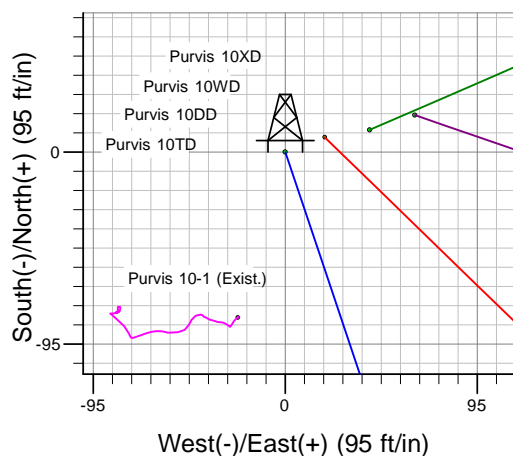
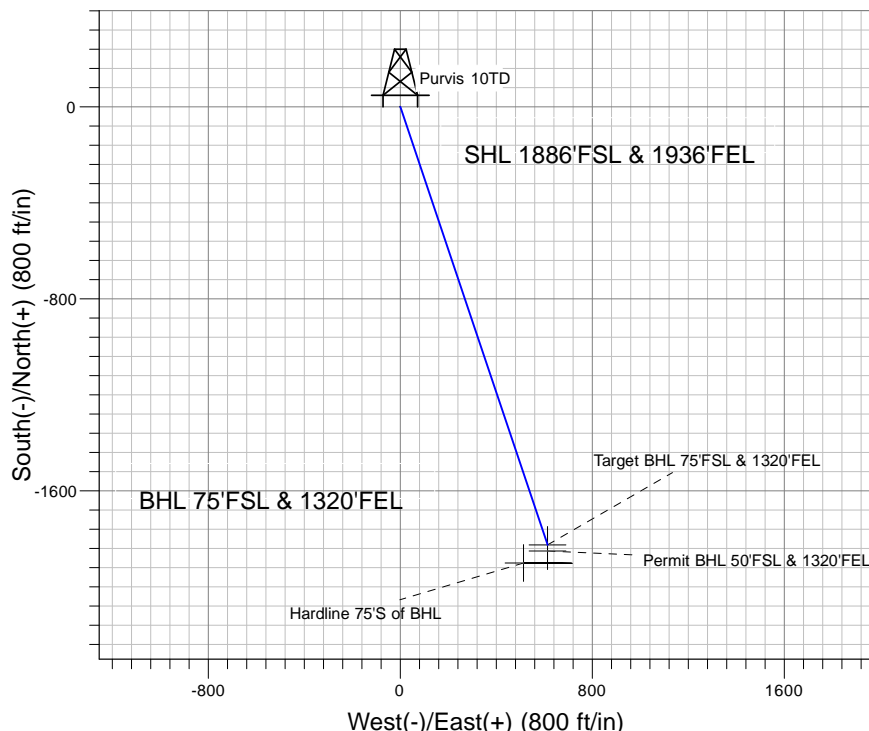
### Well Name: Purvis 10TD

Surface Location: Purvis 10TD Pad Sec. 10-T4N-R67W  
 North American Datum 1983 , US State Plane 1983 , Colorado Northern Zone  
 Ground Elevation: 4794.0

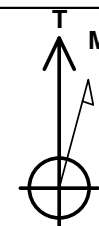
+N/-S+E/-W Northing Easting Latitude Longitude Slot  
 0.0 0.0 1361747.58 3174369.58 40° 19' 28.956 N 104° 52' 28.596 W  
 Original Well Elev WELL @ 4807.0ft (Original Well Elev)



### PETROLEUM DEVELOPMENT CORP Weld County CO



Purvis 10TD Pad Sec. 10-T4N-R67W  
 Purvis 10TD  
 Plan #1 (7-14-10)  
 16:59, July 19 2010



Azimuths to True North  
 Magnetic North: 9.04°

Magnetic Field  
 Strength: 53175.8nT  
 Dip Angle: 67.00°  
 Date: 7/19/2010  
 Model: IGRF2010

### WELLBORE TARGET DETAILS (LAT/LONG)

Name	TVD	+N/-S	+E/-W	Latitude	Longitude	Shape
Target BHL 75'FSL & 1320'FEL	5900.0	-1825.7	613.5	40° 19' 10.915 N	104° 52' 20.676 W	Point
Permit BHL 50'FSL & 1320'FEL	6000.0	-1850.7	613.5	40° 19' 10.668 N	104° 52' 20.676 W	Point
Hardline 75'S of BHL	7500.0	-1900.7	513.1	40° 19' 10.174 N	104° 52' 21.972 W	Polygon

### SECTION DETAILS

Sec	MD	Inc	Azi	TVD	+N/-S	+E/-W	DLeg	TFace	VSec	Target
1	0.0	0.00	0.00	0.0	0.0	0.0	0.00	0.00	0.0	
2	200.0	0.00	0.00	200.0	0.0	0.0	0.00	0.00	0.0	
3	1350.9	23.02	161.43	1320.2	-216.2	72.7	2.00	161.43	228.1	
4	5109.8	23.02	161.43	4779.8	-1609.5	540.8	0.00	0.00	1697.9	
5	6260.7	0.00	0.00	5900.0	-1825.7	613.5	2.00	180.00	1926.0	Target BHL 75'FSL & 1320'FEL
6	7860.7	0.00	0.00	7500.0	-1825.7	613.5	0.00	0.00	1926.0	