

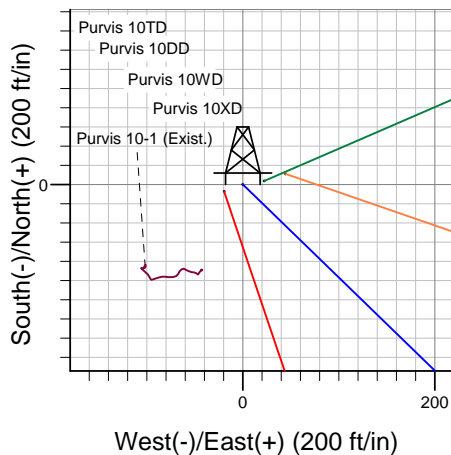
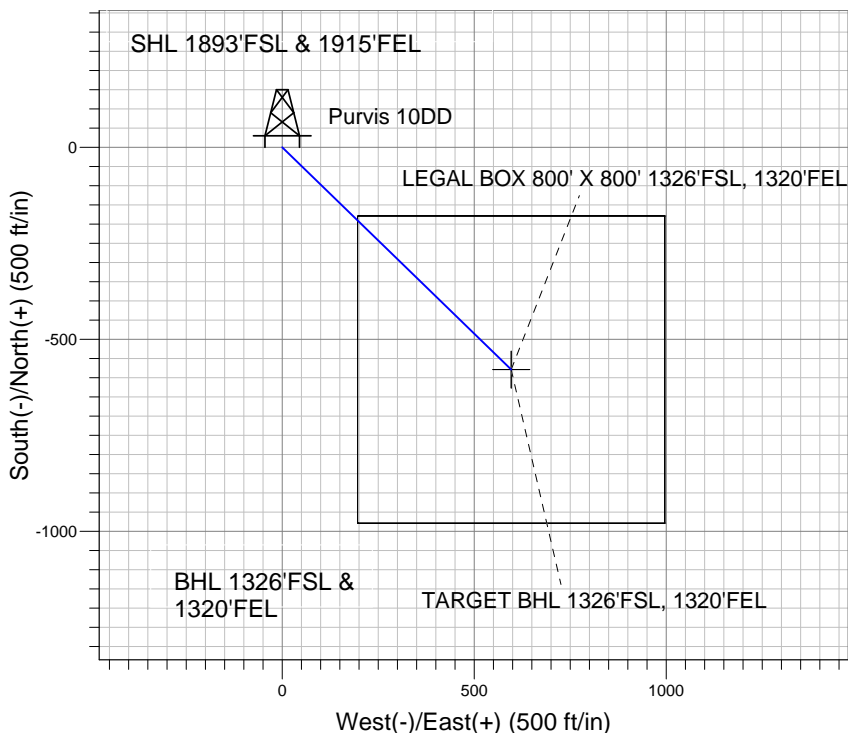
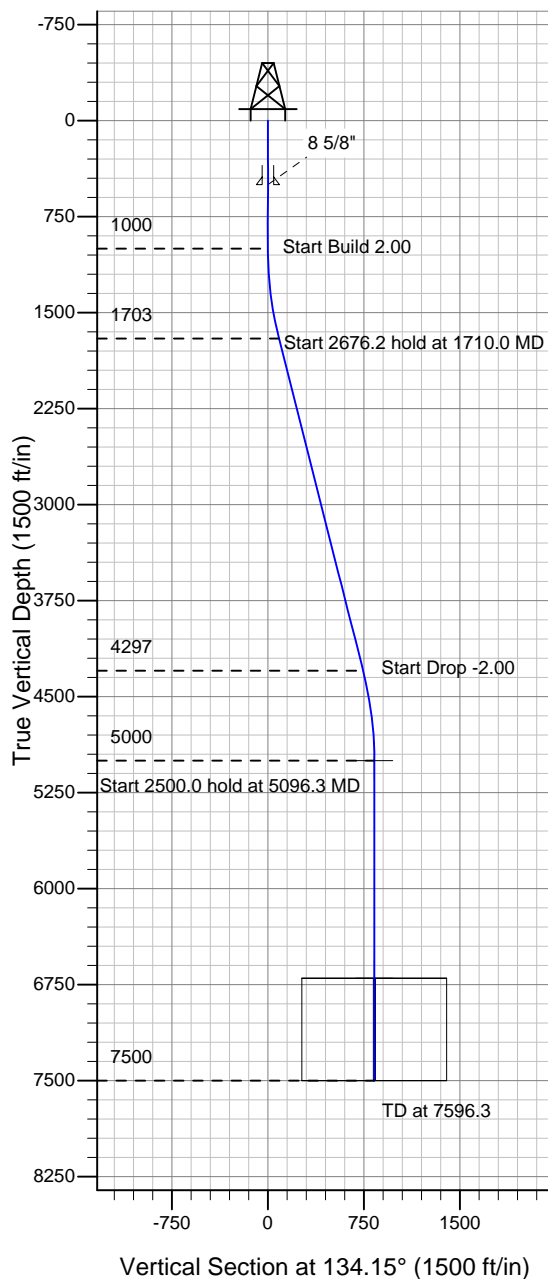
ENSIGN

Directional

Well Name: Purvis 10DD

Surface Location: Purvis 10TD Pad Sec. 10-T4N-R67W
 North American Datum 1983 , US State Plane 1983 Colorado Northern Zone
 Ground Elevation: 4794.0
 +N/-S +E/-W Northing Easting Latitude Longitude Slot
 0.0 0.0 1361755.00 3174389.05 40° 19' 29.028 N 104° 52' 28.344 W
 Original Well ElevWELL @ 4807.0ft (Original Well Elev)

PETROLEUM DEVELOPMENT CORP Weld County CO



Purvis 10DD
 Plan #1 (7-16-10)
 14:00, July 16 2010



Azimuths to True North
 Magnetic North: 9.07°
 Magnetic Field
 Strength: 53253.0snT
 Dip Angle: 67.03°
 Date: 12/31/2009
 Model: IGRF200510

WELLBORE TARGET DETAILS (LAT/LONG)

Name	TVD	+N/-S	+E/-W	Latitude	Longitude	Shape
TARGET BHL 1326'FSL, 1320'FEL	5000.0	-579.2	596.7	40° 19' 23.304 N	104° 52' 20.640 W	Point
LEGAL BOX 800' X 800' 1326'FSL, 1320'FEL	6700.0	-579.2	596.7	40° 19' 23.304 N	104° 52' 20.640 W	Rectangle (Sides: L800.0 W800.0)

SECTION DETAILS

Sec	MD	Inc	Azi	TVD	+N/-S	+E/-W	DLeg	TFace	VSec	Target
1	0.0	0.00	0.00	0.0	0.0	0.0	0.00	0.00	0.0	
2	1000.0	0.00	0.00	1000.0	0.0	0.0	0.00	0.00	0.0	
3	31710.0	14.20	134.15	1702.8	-61.0	62.8	2.00	134.15	87.5	
4	44386.2	14.20	134.15	4297.2	-518.3	533.9	0.00	0.00	744.1	
5	55096.3	0.00	0.00	5000.0	-579.2	596.7	2.00	180.00	831.6	TARGET BHL 1326'FSL, 1320'FEL
6	67596.3	0.00	0.00	7500.0	-579.2	596.7	0.00	0.00	831.6	