




Topographic Map


Purvis 10XD, 10DD, 10TD and 10WD
NWSE, Section 10, T4N, R67W, 6th P.M.

 Red Lines


OIL AND GAS WELLS

-  Oil and Gas Wells
-  Temporary Point


CITIES TOWNS PLACES

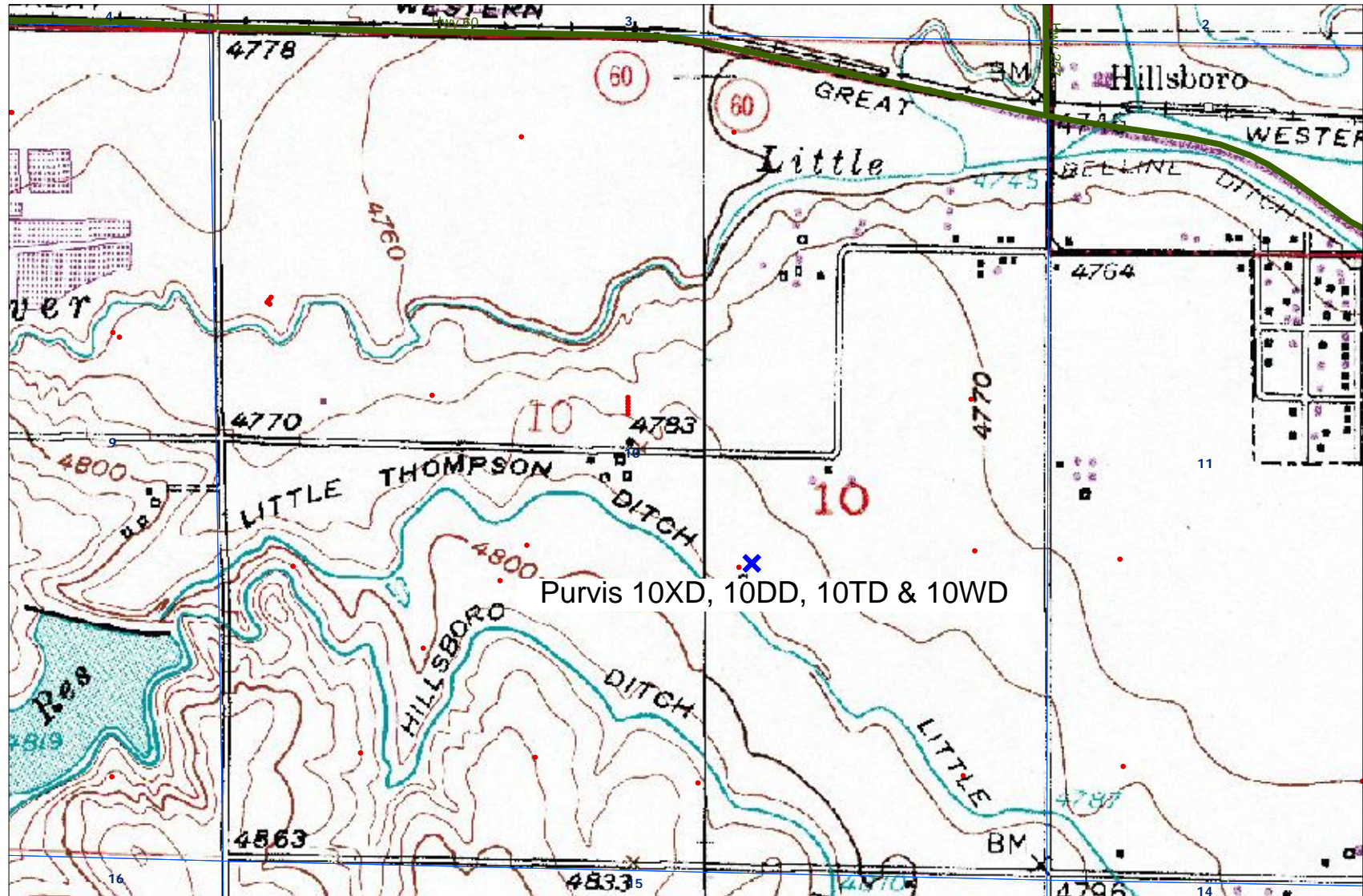
-  Towns and Places

ROADS AND RRS

-  Major Highways

TOPOS (1: 24K)

-  NE Colorado Topo



SCALE 1 : 11,698

