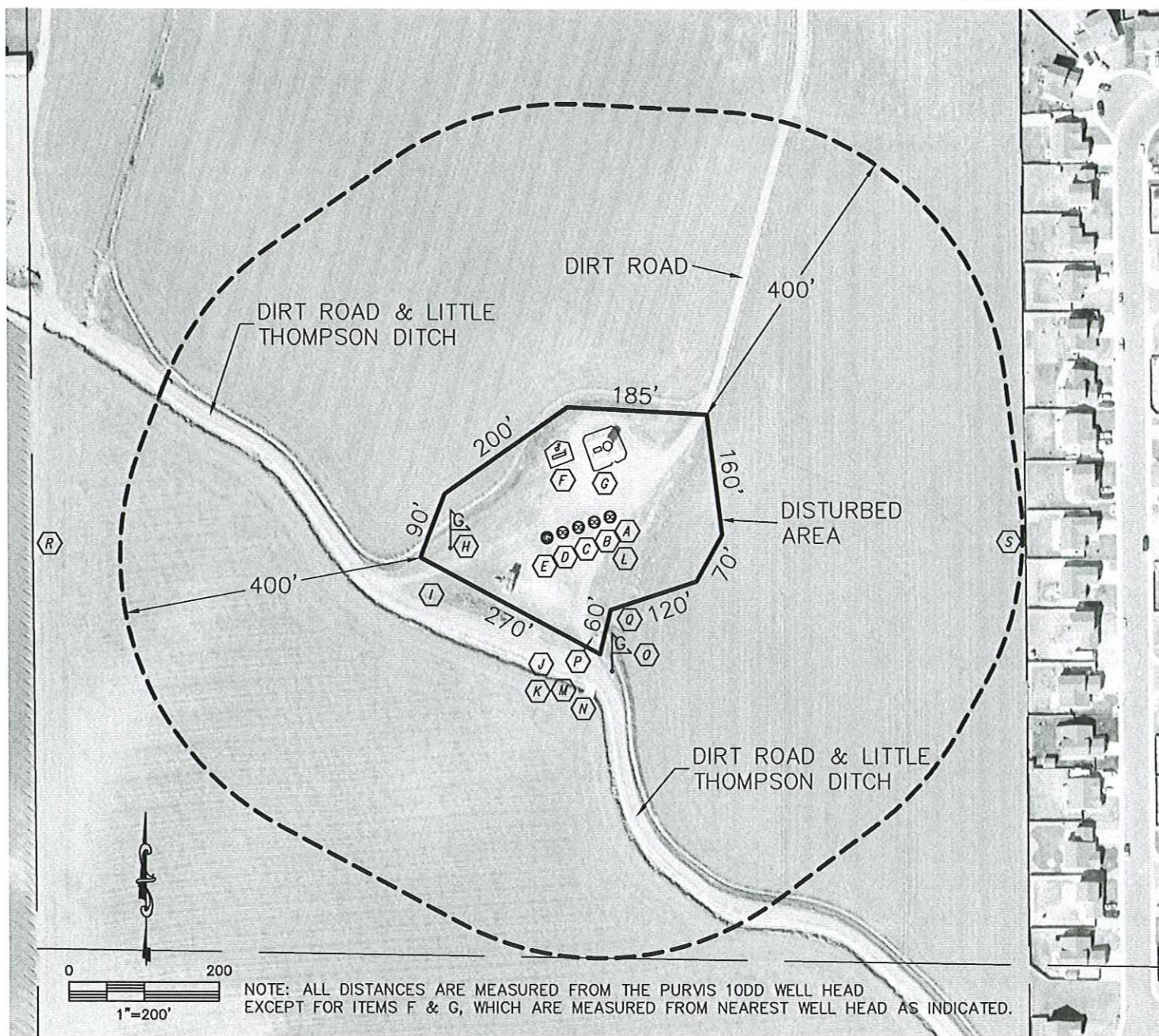


VISIBLE IMPROVEMENTS PURVIS SE-10 MULTI-WELL PAD

SECTION: 10
TOWNSHIP: 4N
RANGE: 67W



IMPROVEMENTS:

- | | |
|--|---|
| (A) PURVIS 10XD | (K) LITTLE THOMPSON DITCH 197' SOUTH |
| (B) PURVIS 10WD | (L) DIRT ROAD 32' SOUTHEAST |
| (C) PURVIS 10DD | (M) IRRIGATION VALVE 202' SOUTH |
| (D) PURVIS 10TD | (N) CONCRETE BRIDGE 207' SOUTH |
| (E) EX. WELL-PURVIS 10-1 | (O) GAS MARKER 196' SOUTH |
| (F) SEPARATOR 95' NORTHWEST (FROM PURVIS 10DD) | (P) CONCRETE HEADWALL 144' SOUTH |
| METER HOUSE 105' NORTHWEST (FROM PURVIS 10DD) | (Q) IRRIGATION DITCH 137' SOUTH |
| (G) OIL TANK 87' NORTH (FROM PURVIS 10XD) | (R) PROPERTY LINE 737' WEST |
| PRODUCED WATER TANK 86' NORTH (FROM PURVIS 10XD) | (S) FENCE & NEAREST PROPERTY LINE 584' EAST |
| (H) GAS MARKER 183' WEST | |
| (I) VENT PIPE 237' SOUTHWEST | |
| (J) DIRT ROAD 179' SOUTH | |