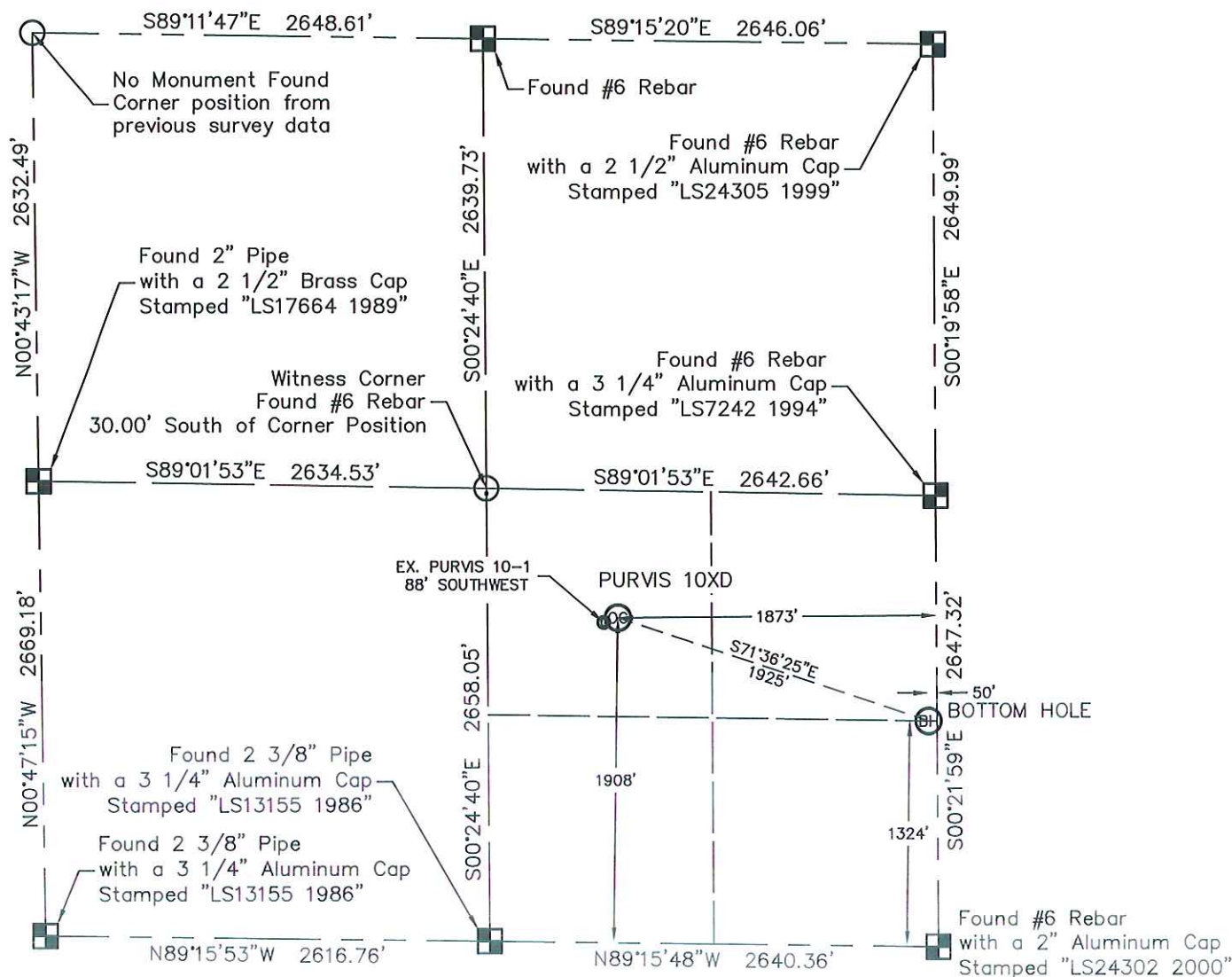


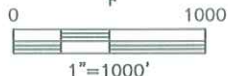
## WELL LOCATION CERTIFICATE

THIS MAP DOES NOT REPRESENT A BOUNDARY SURVEY

SECTION: 10  
TOWNSHIP: 4N  
RANGE: 67W

In accordance with a request from MAC NEUMANN with PETROLEUM DEVELOPMENT CORPORATION King Surveyors Inc. has determined the surface location of the PURVIS 10XD to be 1908' from the SOUTH line and 1873' from the EAST line and the bottom hole to be 1324' from the SOUTH line and 50' from the EAST line, as measured at right angles, from the section lines of Section 10, Township 4 North, Range 67 West of the Sixth Principal Meridian, County of Weld, State of Colorado.

I hereby state that this Well Location Certificate was prepared by me, or under my direct supervision, that the fieldwork was completed on 6-8-2010, for and on behalf of PETROLEUM DEVELOPMENT CORPORATION. That this is not a Land Survey Plat or an Improvement Survey Plat, and that it is not to be relied upon for establishment of fence, building, or other future improvement lines.



## NOTE:

- 1) Bearings shown are Grid Bearings of the Colorado State Plane Coordinate System, North Zone, North American Datum 1983/92. The lineal dimensions as contained herein are based upon the "U.S. Survey Foot."
- 2) Ground elevations are based on an observed GPS elevation (NAVD 1988 DATUM).
- 3) NEAREST EXISTING WELL: PURVIS 10-1 88' SOUTHWEST
- 4) IMPROVEMENTS: See VISIBLE IMPROVEMENTS exhibit for all visible improvements within 400' of well head.
- 5) SURFACE USE: CROP FIELD & EXISTING WELL SITE
- 6) FIELD OPERATOR: DALLAS NIELSEN

## NOTE

According to Colorado law, you must commence any legal action based upon any defect in this W.L.C. within three years after you discover such defect. In no event, may any action based upon any defect in this survey be commenced more than ten years after the date of the certificate shown hereon. (13-80-105 C.R.S.)

## LEGEND

- = ALIQUOT MONUMENT  
AS DESCRIBED
- = CALCULATED POSITION

SURFACE LOCATION  
LATITUDE: 40.32476°N  
LONGITUDE: 104.87438°W  
PDOP: 1.8  
ELEV: 4793'  
1/4, 1/4: NW 1/4 SE 1/4  
NEAREST PROPERTY LINE: 552' EAST

BOTTOM HOLE  
LATITUDE: 40.32306°N  
LONGITUDE: 104.86785°W

Michael Chad Dika 38106 On Behalf Of King Surveyors, Inc.  
Colorado Licensed Professional Land Surveyor #38106  
PROJECT#: 2010211

