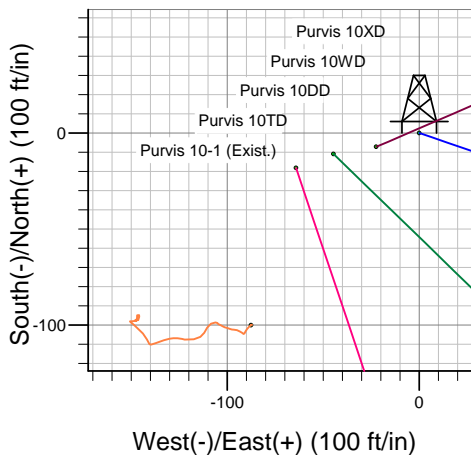
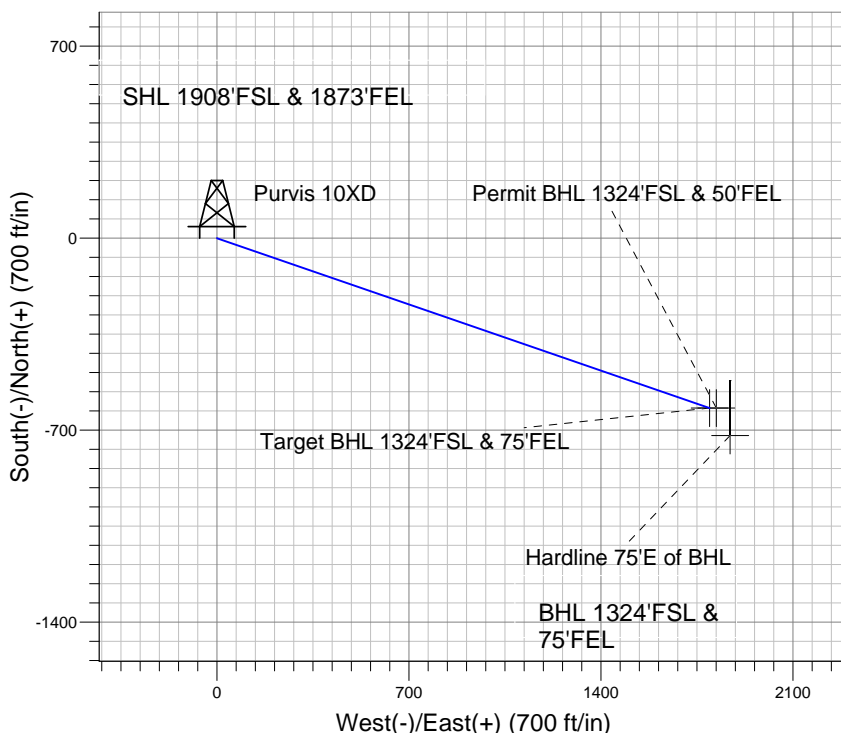
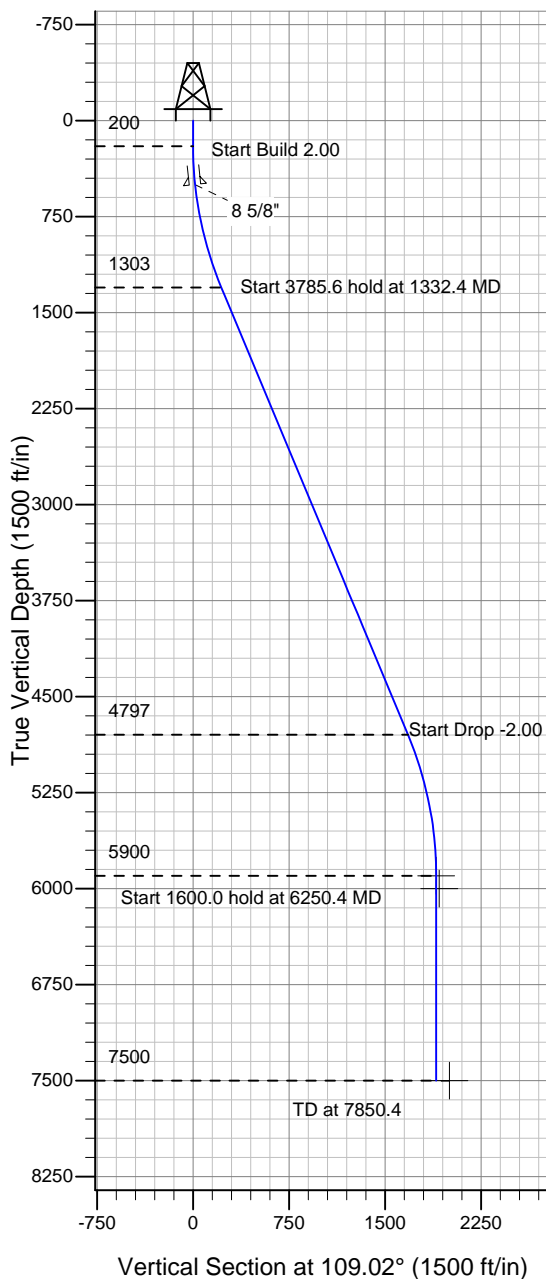


### Well Name: Purvis 10XD

Surface Location: Purvis 10TD Pad Sec. 10-T4N-R67W  
 North American Datum 1983 , US State Plane 1983 Colorado Northern Zone  
 Ground Elevation: 4793.0  
 +N/-S +E/-W Northing Easting Latitude Longitude Slot  
 0.0 0.0 1361766.23 3174433.58 40° 19' 29.136 N 104° 52' 27.768 W  
 Original Well ElevWELL @ 4806.0ft (Original Well Elev)

### PETROLEUM DEVELOPMENT CORP Weld County CO



Purvis 10XD  
 Plan#1 (7-14-10)  
 8:26, July 19 2010



Azimuths to True North  
 Magnetic North: 9.07°  
 Magnetic Field  
 Strength: 53253.1snT  
 Dip Angle: 67.03°  
 Date: 12/31/2009  
 Model: IGRF200510

#### WELLBORE TARGET DETAILS (LAT/LONG)

Name	TVD	+N/-S	+E/-W	Latitude	Longitude	Shape
Target BHL 1324'FSL & 75'FEL	5900.0	-619.2	1795.8	40° 19' 23.016 N	104° 52' 4.583 W	Point
Permit BHL 1324'FSL & 50'FEL	6000.0	-619.2	1820.8	40° 19' 23.016 N	104° 52' 4.260 W	Point
Hardline 75'E of BHL	7500.0	-719.2	1870.8	40° 19' 22.028 N	104° 52' 3.615 W	Polygon

#### SECTION DETAILS

Sec	MD	Inc	Azi	TVD	+N/-S	+E/-W	DLeg	TFace	VSec	Target
1	0.0	0.00	0.00	0.0	0.0	0.0	0.00	0.00	0.0	
2	200.0	0.00	0.00	200.0	0.0	0.0	0.00	0.00	0.0	
3	1332.4	22.65	109.02	1303.1	-72.0	208.8	2.00	109.02	220.9	
4	5118.0	22.65	109.02	4796.9	-547.2	1586.9	0.00	0.00	1678.6	
5	6250.4	0.00	0.00	5900.0	-619.2	1795.8	2.00	180.00	1899.5	Target BHL 1324'FSL & 75'FEL
6	67850.4	0.00	0.00	7500.0	-619.2	1795.8	0.00	0.00	1899.5	