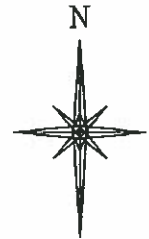
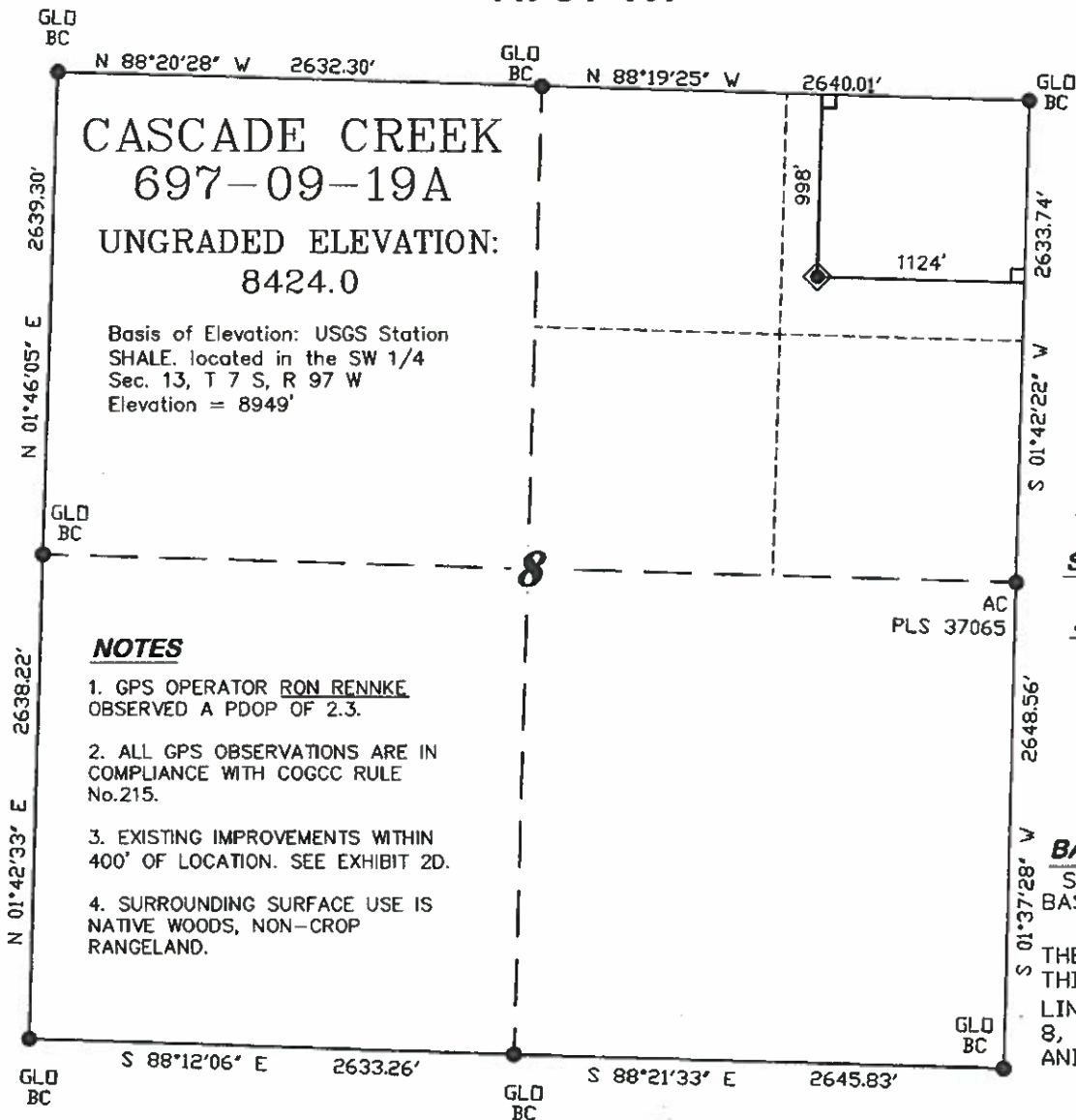


R. 97 W.



SCALE 1" = 1000'

T. 6 S.

SHL LATITUDE (NAD 83)
NORTH 39.541960 DEG.
SHL LONGITUDE (NAD 83)
WEST 108.238146 DEG.
SHL NORTHING (NAD 83)
1633923.89
SHL EASTING (NAD 83)
2227915.34

BASIS OF BEARING/DATUM
SPCS CO CENTRAL NAD 27
BASED ON NGS TRIANGULATION
STATION "SHALE"
THE BASIS OF BEARINGS FOR
THIS SURVEY IS THE NORTH
LINE OF THE NE 1/4 OF SECTION
8, MONUMENTED BY GLO BC'S
AND BEARING N 88° 19' 25" W.



SURVEYOR'S STATEMENT

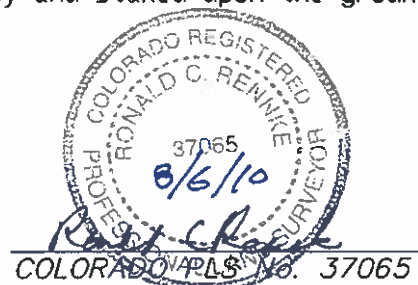
I, Ronald C. Rennke, an employee and agent for D. R. Griffin & Associates, Inc. state the plat hereon is a correct representation of a survey made under my authority and staked upon the ground as shown on August 3, 2010 for the CASCADE CREEK 697-09-19A.

LEGEND

- ◆ WELL LOCATION
- FOUND MONUMENT
- L DENOTES 90° TIE

Notice: In accordance with Colorado State Law, any legal action based upon any defect in this survey plat must commence within three (3) years after first discovery of such defect. In no event, may any action based upon any defect in this survey plat be commenced more than ten (10) years from the date of certification shown hereon.

CC 608-41 PAD



DRG **RIFFIN & ASSOCIATES, INC.**
(307) 362-5028 1414 ELK ST., ROCK SPRINGS, WY 82901

DRAWN: 8/4/10 - DEH

SCALE: 1" = 1000'

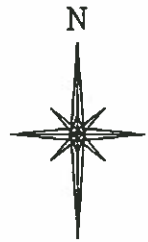
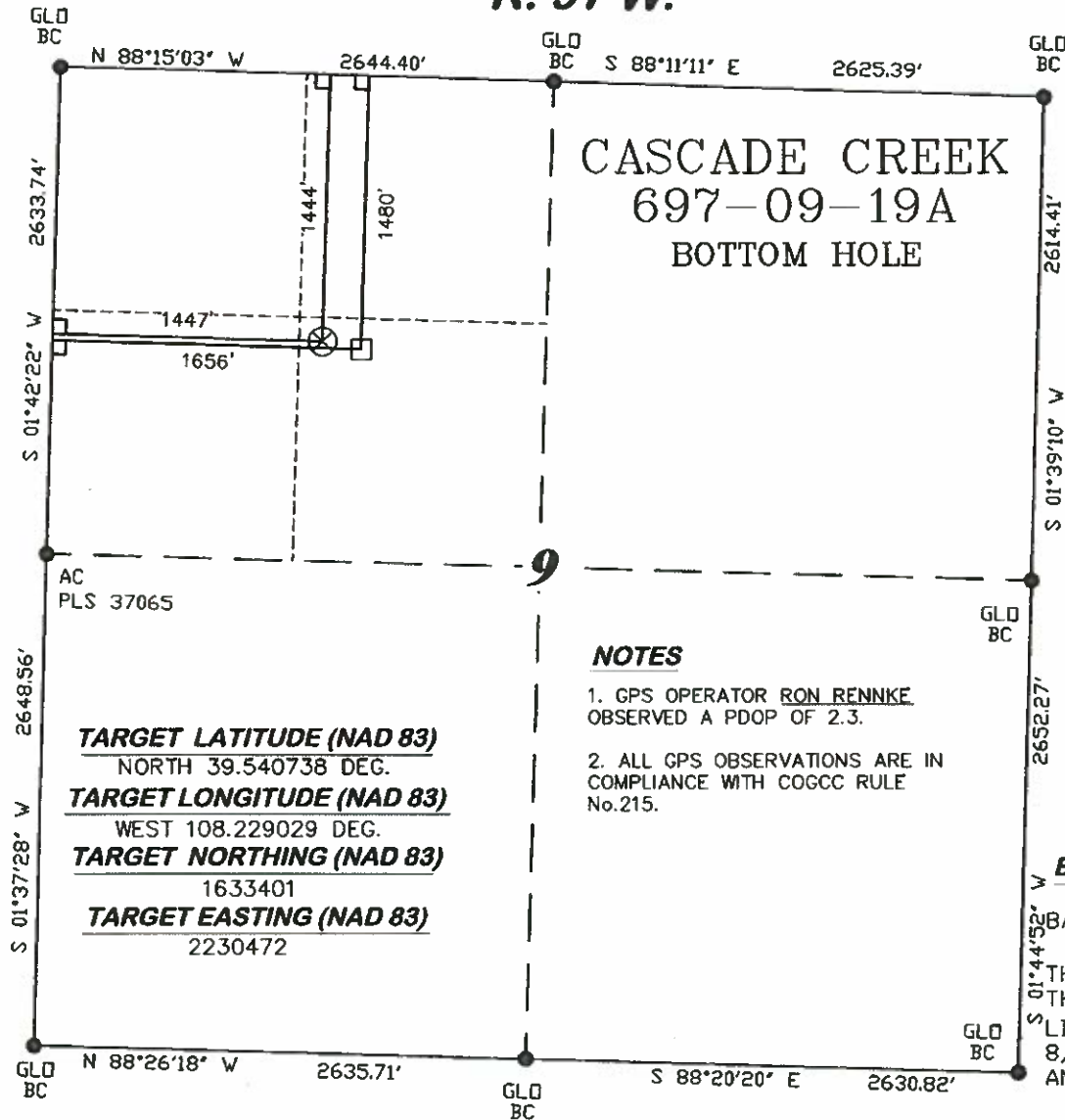
REVISED: N/A

DRG JOB No. 16569

EXHIBIT 1

**PLAT OF DRILLING LOCATION
FOR OXY USA WTP LP
SHL IN THE NENE SECTION 8
998' F/NL & 1124' F/EL, SECTION 8,
T. 6 S., R. 97 W., 6th P.M.
GARFIELD COUNTY, COLORADO**

R. 97 W.



SCALE 1" = 1000'

T. 6 S.

BHL LATITUDE (NAD 83)
NORTH 39.540639 DEG.
BHL LONGITUDE (NAD 83)
WEST 108.228290 DEG.
BHL NORTHING (NAD 83)
1633359
BHL EASTING (NAD 83)
2230679

NOTES

1. GPS OPERATOR RON RENNKE OBSERVED A PDOP OF 2.3.
2. ALL GPS OBSERVATIONS ARE IN COMPLIANCE WITH COGCC RULE No.215.

TARGET LATITUDE (NAD 83)
NORTH 39.540738 DEG.
TARGET LONGITUDE (NAD 83)
WEST 108.229029 DEG.
TARGET NORTHING (NAD 83)
1633401
TARGET EASTING (NAD 83)
2230472

BASIS OF BEARING/DATUM
SPCS CO CENTRAL NAD 27
BASED ON NGS TRIANGULATION STATION "SHALE"

THE BASIS OF BEARINGS FOR THIS SURVEY IS THE NORTH LINE OF THE NE 1/4 OF SECTION 8, MONUMENTED BY GLO BC'S AND BEARING N 88° 19' 25" W.



SURVEYOR'S STATEMENT

I, Ronald C. Rennke, an employee and agent for D. R. Griffin & Associates, Inc. state the plat hereon is a correct representation of a survey made under my authority on August 3, 2010 for the CASCADE CREEK 697-09-19A BOTTOM HOLE LOCATION.

LEGEND

- ⊗ APPROXIMATE TARGET LOCATION
- APPROXIMATE BOTTOM LOCATION
- FOUND MONUMENT
- L DENOTES 90° TIE

Notice: In accordance with Colorado State Law, any legal action based upon any defect in this survey plat must commence within three (3) years after first discovery of such defect. In no event, may any action based upon any defect in this survey plat be commenced more than ten (10) years from the date of certification shown hereon.

CC 608-41 PAD



DRGRIFFIN & ASSOCIATES, INC.
1414 ELK ST., ROCK SPRINGS, WY 82901

DRAWN: 8/4/10 - DEH

SCALE: 1" = 1000'

REVISED: N/A

DRG JOB No. 16569

EXHIBIT 1

**PLAT OF BOTTOM HOLE LOCATION
FOR OXY USA WTP LP
BHL IN THE SENW SECTION 9**

**1480' F/NL & 1656' F/WL, SECTION 9,
T. 6 S., R. 97 W., 6th P.M.
GARFIELD COUNTY, COLORADO**