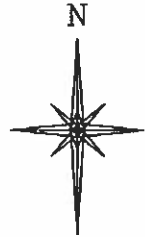
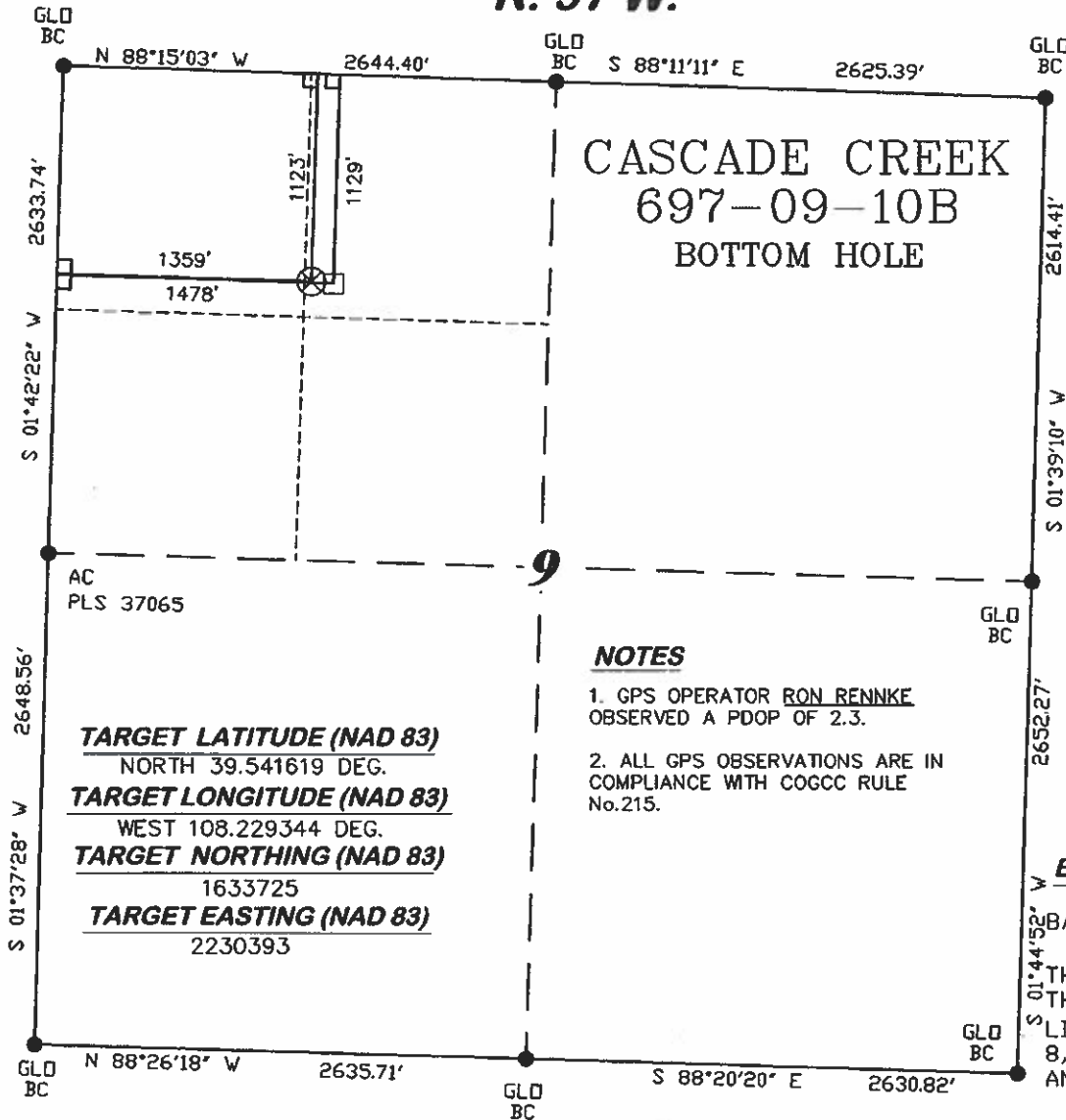


**PLAT OF DRILLING LOCATION  
FOR OXY USA WTP LP  
SHL IN THE NENE SECTION 8  
992' F/NL & 1120' F/EL, SECTION 8,  
T. 6 S., R. 97 W., 6th P.M.  
GARFIELD COUNTY, COLORADO**

**R. 97 W.**



SCALE 1" = 1000'

**T. 6 S.**

**TARGET LATITUDE (NAD 83)**  
NORTH 39.541619 DEG.  
**TARGET LONGITUDE (NAD 83)**  
WEST 108.229344 DEG.  
**TARGET NORTHING (NAD 83)**  
1633725  
**TARGET EASTING (NAD 83)**  
2230393

**NOTES**

1. GPS OPERATOR RON RENNKE OBSERVED A PDOP OF 2.3.
2. ALL GPS OBSERVATIONS ARE IN COMPLIANCE WITH COGCC RULE No.215.

**BHL LATITUDE (NAD 83)**  
NORTH 39.541602 DEG.  
**BHL LONGITUDE (NAD 83)**  
WEST 108.228919 DEG.  
**BHL NORTHING (NAD 83)**  
1633715  
**BHL EASTING (NAD 83)**  
2230513

**BASIS OF BEARING/DATUM**  
SPCS CO CENTRAL NAD 27  
BASED ON NGS TRIANGULATION  
STATION "SHALE"

THE BASIS OF BEARINGS FOR  
THIS SURVEY IS THE NORTH  
LINE OF THE NE $\frac{1}{4}$  OF SECTION  
8, MONUMENTED BY GLO BC'S  
AND BEARING N 88° 19' 25" W.



**SURVEYOR'S STATEMENT**

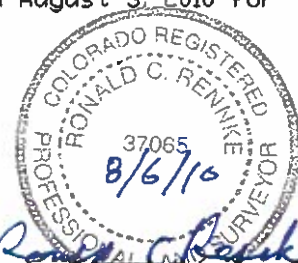
I, Ronald C. Rennke, an employee and agent for D. R. Griffin & Associates, Inc. state the plat hereon is a correct representation of a survey made under my authority on August 3, 2010 for the CASCADE CREEK 697-09-10B BOTTOM HOLE LOCATION.

**LEGEND**

- ⊗ APPROXIMATE TARGET LOCATION
- APPROXIMATE BOTTOM LOCATION
- FOUND MONUMENT
- L DENOTES 90° TIE

Notice: In accordance with Colorado State Law, any legal action based upon any defect in this survey plat must commence within three (3) years after first discovery of such defect. In no event, may any action based upon any defect in this survey plat be commenced more than ten (10) years from the date of certification shown hereon.

**CC 608-41 PAD**



**COLORADO PLS No. 37065**

**DRG** **RIFFIN & ASSOCIATES, INC.**  
(307) 362-5028 1414 ELK ST., ROCK SPRINGS, WY 82901

**DRAWN: 8/4/10 - DEH**

**SCALE: 1" = 1000'**

**REVISED: N/A**

**DRG JOB No. 16569**

**EXHIBIT 1**

**PLAT OF BOTTOM HOLE LOCATION  
FOR OXY USA WTP LP  
BHL IN THE NEW SECTION 9**

**1129' F/NL & 1478' F/WL, SECTION 9,  
T. 6 S., R. 97 W., 6th P.M.  
GARFIELD COUNTY, COLORADO**