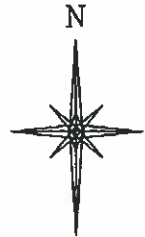


R. 97 W.



SCALE 1" = 1000'

T. 6 S.

**CASCADE CREEK
697-09-10A**

**UNGRADED ELEVATION:
8420.5**

Basis of Elevation: USGS Station
SHALE, located in the SW 1/4
Sec. 13, T 7 S, R 97 W
Elevation = 8949'

NOTES

1. GPS OPERATOR RON RENNKE
OBSERVED A PDOP OF 2.2.
2. ALL GPS OBSERVATIONS ARE IN
COMPLIANCE WITH COGCC RULE
No.215.
3. EXISTING IMPROVEMENTS WITHIN
400' OF LOCATION. SEE EXHIBIT 2D.
4. SURROUNDING SURFACE USE IS
NATIVE WOODS, NON-CROP
RANGELAND.

SHL LATITUDE (NAD 83)

NORTH 39.542029 DEG.

SHL LONGITUDE (NAD 83)

WEST 108.238087 DEG.

SHL NORTHING (NAD 83)

1633948.32

SHL EASTING (NAD 83)

2227932.76

BASIS OF BEARING/DATUM

SPCS CO CENTRAL NAD 27
BASED ON NGS TRIANGULATION
STATION "SHALE"

THE BASIS OF BEARINGS FOR
THIS SURVEY IS THE NORTH
LINE OF THE NE 1/4 OF SECTION
8, MONUMENTED BY GLO BC'S
AND BEARING N 88° 19' 25" W.



SURVEYOR'S STATEMENT

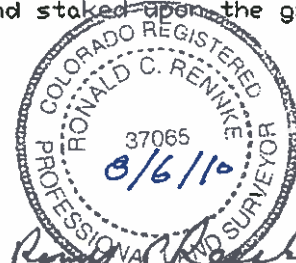
I, Ronald C. Rennke, an employee and agent for D. R. Griffin & Associates, Inc. state the plat hereon is a correct representation of a survey made under my authority and staked upon the ground as shown on August 3, 2010 for the CASCADE CREEK 697-09-10A.

LEGEND

- ◆ WELL LOCATION
- FOUND MONUMENT
- L DENOTES 90° TIE

Notice: In accordance with Colorado State Law, any legal action based upon any defect in this survey plat must commence within three (3) years after first discovery of such defect. In no event, may any action based upon any defect in this survey plat be commenced more than ten (10) years from the date of certification shown hereon.

CC 608-41 PAD



COLORADO PLS No. 37065



DRGRIFFIN & ASSOCIATES, INC.
1414 ELK ST., ROCK SPRINGS, WY 82901

(307) 362-5028

DRAWN: 8/4/10 - DEH

REVISED: N/A

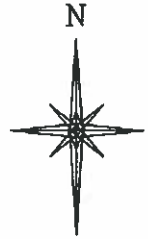
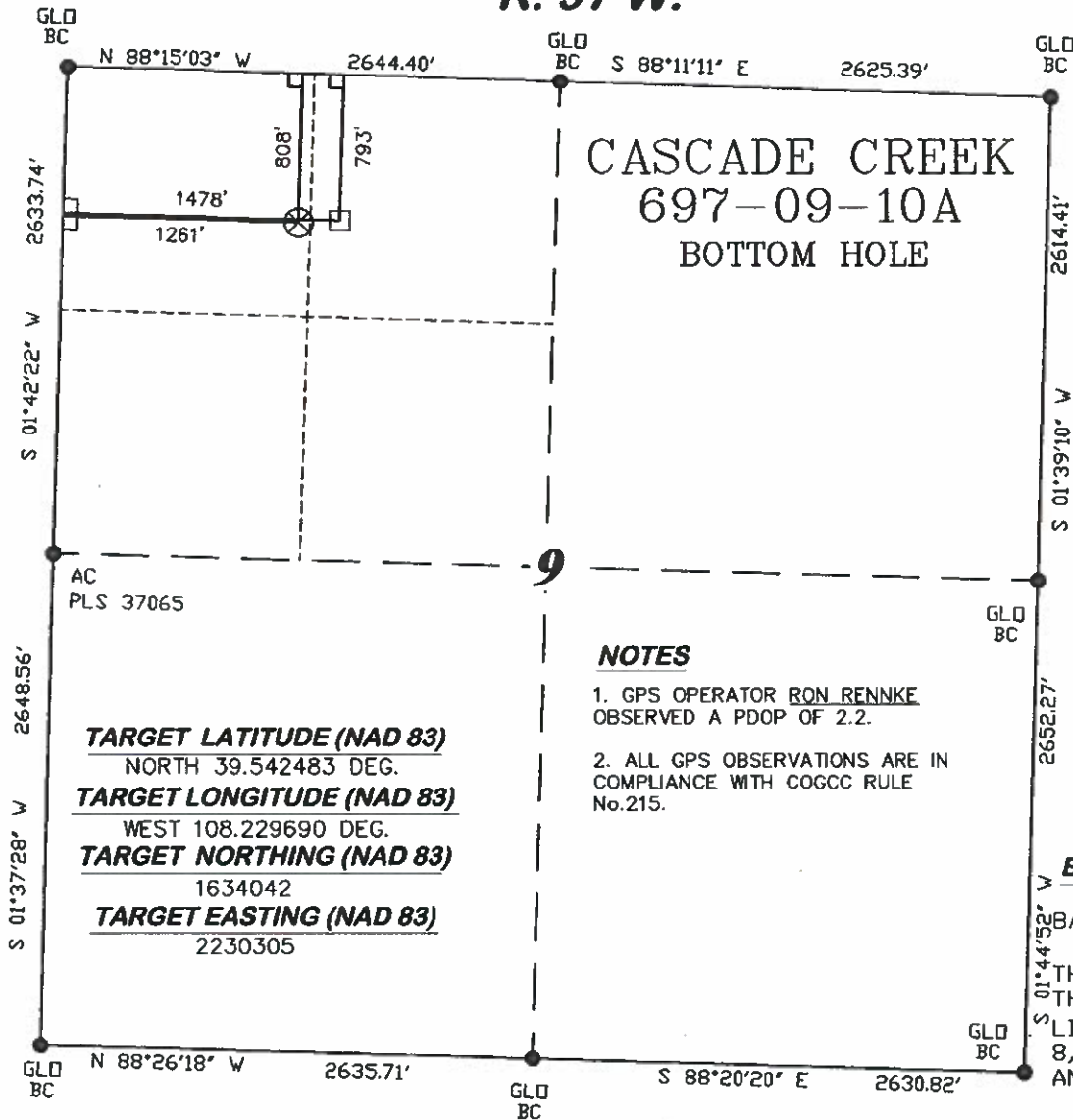
SCALE: 1" = 1000'

DRG JOB No. 16569

EXHIBIT 1

**PLAT OF DRILLING LOCATION
FOR OXY USA WTP LP
SHL IN THE NENE SECTION 8
973' F/NL & 1107' F/EL, SECTION 8,
T. 6 S., R. 97 W., 6th P.M.
GARFIELD COUNTY, COLORADO**

R. 97 W.



SCALE 1" = 1000'

T. 6 S.

BHL LATITUDE (NAD 83)
NORTH 39.542525 DEG.
BHL LONGITUDE (NAD 83)
WEST 108.228919 DEG.
BHL NORTHING (NAD 83)
1634051
BHL EASTING (NAD 83)
2230523

NOTES

1. GPS OPERATOR RON RENNKE OBSERVED A PDOP OF 2.2.
2. ALL GPS OBSERVATIONS ARE IN COMPLIANCE WITH COGCC RULE No.215.

BASIS OF BEARING/DATUM

SPCS CO CENTRAL NAD 27
BASED ON NGS TRIANGULATION STATION "SHALE"
THE BASIS OF BEARINGS FOR THIS SURVEY IS THE NORTH LINE OF THE NE 1/4 OF SECTION 8, MONUMENTED BY GLO BC'S AND BEARING N 88° 19' 25" W.

TARGET LATITUDE (NAD 83)
NORTH 39.542483 DEG.
TARGET LONGITUDE (NAD 83)
WEST 108.229690 DEG.
TARGET NORTHING (NAD 83)
1634042
TARGET EASTING (NAD 83)
2230305



SURVEYOR'S STATEMENT

I, Ronald C. Rennke, an employee and agent for D. R. Griffin & Associates, Inc. state the plat hereon is a correct representation of a survey made under my authority on August 3, 2010 for the CASCADE CREEK 697-09-10A BOTTOM HOLE LOCATION.

LEGEND

- ⊗ APPROXIMATE TARGET LOCATION
- APPROXIMATE BOTTOM LOCATION
- FOUND MONUMENT
- L DENOTES 90° TIE

Notice: In accordance with Colorado State Law, any legal action based upon any defect in this survey plat must commence within three (3) years after first discovery of such defect. In no event, may any action based upon any defect in this survey plat be commenced more than ten (10) years from the date of certification shown hereon.

CC 608-41 PAD



RIFFIN & ASSOCIATES, INC.
1414 ELK ST., ROCK SPRINGS, WY 82901

(307) 362-5028

DRAWN: 8/4/10 - DEH

REVISED: N/A

SCALE: 1" = 1000'

DRG JOB No. 16569

EXHIBIT 1

**PLAT OF BOTTOM HOLE LOCATION
FOR OXY USA WTP LP
BHL IN THE NENW SECTION 9**

**793' F/NL & 1478' F/WL, SECTION 9,
T. 6 S., R. 97 W., 6th P.M.
GARFIELD COUNTY, COLORADO**