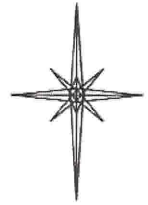


R. 97 W.

N



SCALE 1" = 1000'

T. 6 S.

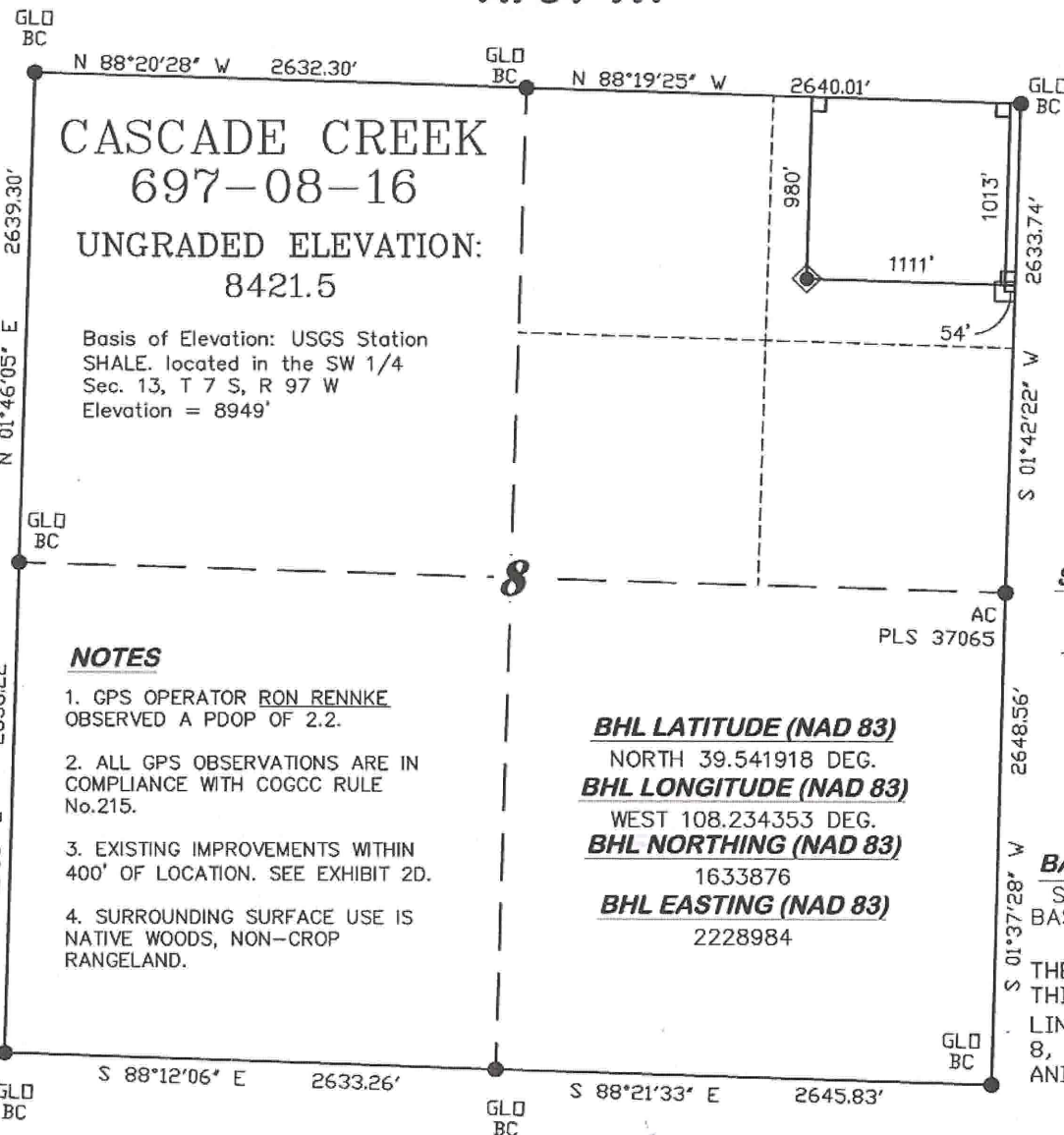
SHL LATITUDE (NAD 83)
NORTH 39.542012 DEG.
SHL LONGITUDE (NAD 83)
WEST 108.238102 DEG.
SHL NORTHING (NAD 83)
1633942.21
SHL EASTING (NAD 83)
2227928.40

BASIS OF BEARING/DATUM
SPCS CO CENTRAL NAD 27
BASED ON NGS TRIANGULATION
STATION "SHALE"
THE BASIS OF BEARINGS FOR
THIS SURVEY IS THE NORTH
LINE OF THE NE 1/4 OF SECTION
8, MONUMENTED BY GLO BC'S
AND BEARING N 88° 19' 25" W.

BHL LATITUDE (NAD 83)
NORTH 39.541918 DEG.
BHL LONGITUDE (NAD 83)
WEST 108.234353 DEG.
BHL NORTHING (NAD 83)
1633876
BHL EASTING (NAD 83)
2228984

NOTES

1. GPS OPERATOR RON RENNKE OBSERVED A PDOP OF 2.2.
2. ALL GPS OBSERVATIONS ARE IN COMPLIANCE WITH COGCC RULE No. 215.
3. EXISTING IMPROVEMENTS WITHIN 400' OF LOCATION. SEE EXHIBIT 2D.
4. SURROUNDING SURFACE USE IS NATIVE WOODS, NON-CROP RANGELAND.



SURVEYOR'S STATEMENT

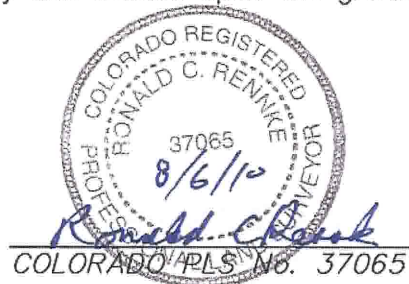
I, Ronald C. Rennke, an employee and agent for D. R. Griffin & Associates, Inc. state the plat hereon is a correct representation of a survey made under my authority and staked upon the ground as shown on August 3, 2010 for the CASCADE CREEK 697-08-16.

LEGEND

- ◆ WELL LOCATION
- APPROXIMATE BOTTOM LOCATION
- FOUND MONUMENT
- L DENOTES 90° TIE

Notice: In accordance with Colorado State Law, any legal action based upon any defect in this survey plat must commence within three (3) years after first discovery of such defect. In no event, may any action based upon any defect in this survey plat be commenced more than ten (10) years from the date of certification shown hereon.

CC 608-41 PAD



RIFFIN & ASSOCIATES, INC.
(307) 362-5028 1414 ELK ST., ROCK SPRINGS, WY 82901

**PLAT OF DRILLING LOCATION
FOR OXY USA WTP LP
SHL IN THE NENE SECTION 8
980' F/NL & 1111' F/EL, SECTION 8,
T. 6 S., R. 97 W., 6th P.M.
GARFIELD COUNTY, COLORADO**

DRAWN: 10/31/08 - RCR

SCALE: 1" = 1000'

REVISED: 8/4/10 - DEH

DRG JOB No. 16569

Revised SHL/BHL Location

EXHIBIT 1