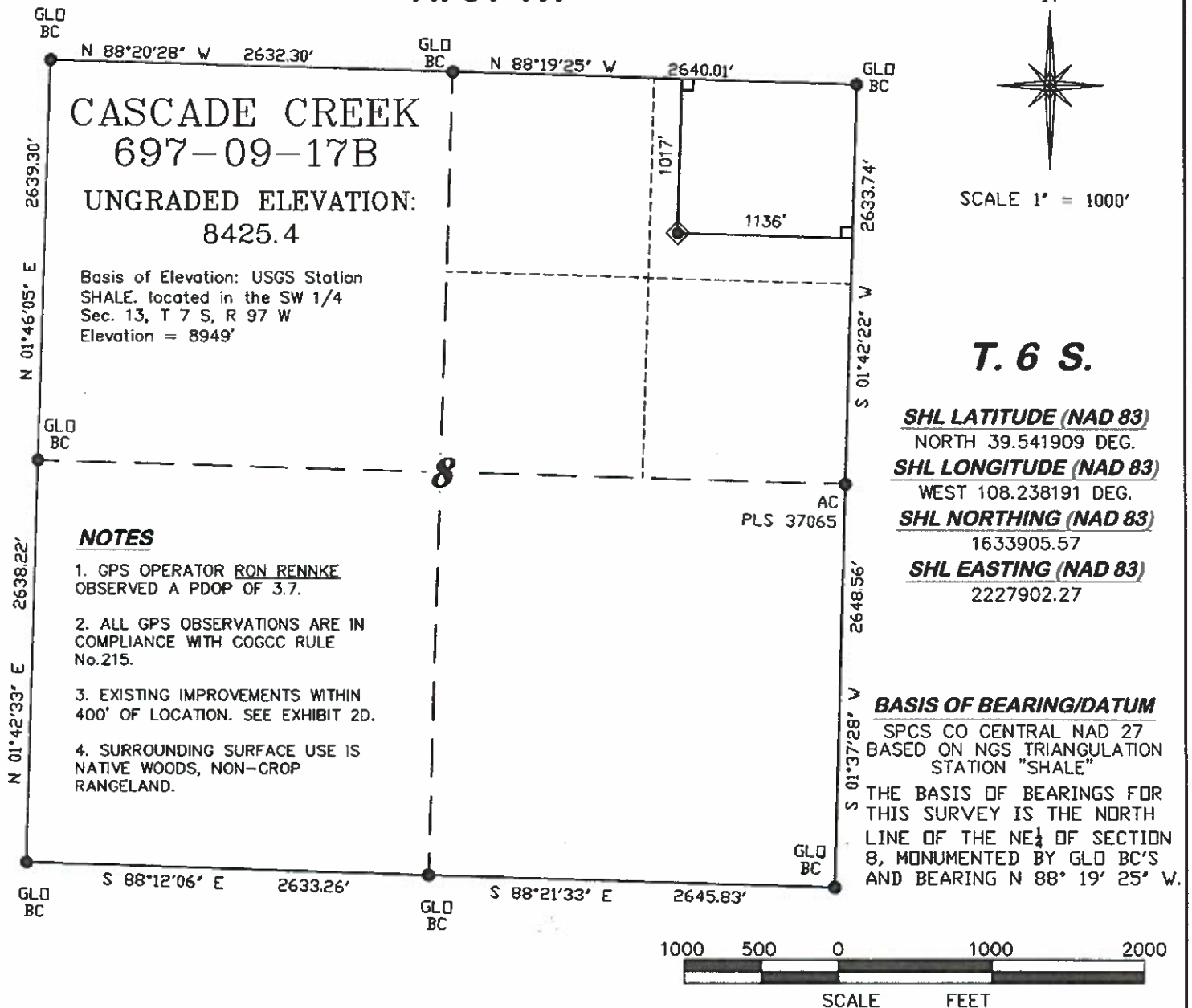


R. 97 W.

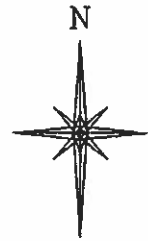


DRG **RIFFIN & ASSOCIATES, INC.**
(307) 362-5028 1414 ELK ST., ROCK SPRINGS, WY 82901

DRAWN: 10/31/08 - RCR	SCALE: 1" = 1000'
REVISED: 8/4/10 - DEH	DRG JOB No. 16569
Revised SHL/BHL Location	EXHIBIT 1

**PLAT OF DRILLING LOCATION
FOR OXY USA WTP LP
SHL IN THE NENE SECTION 8
1017' F/NL & 1136' F/EL, SECTION 8,
T. 6 S., R. 97 W., 6th P.M.
GARFIELD COUNTY, COLORADO**

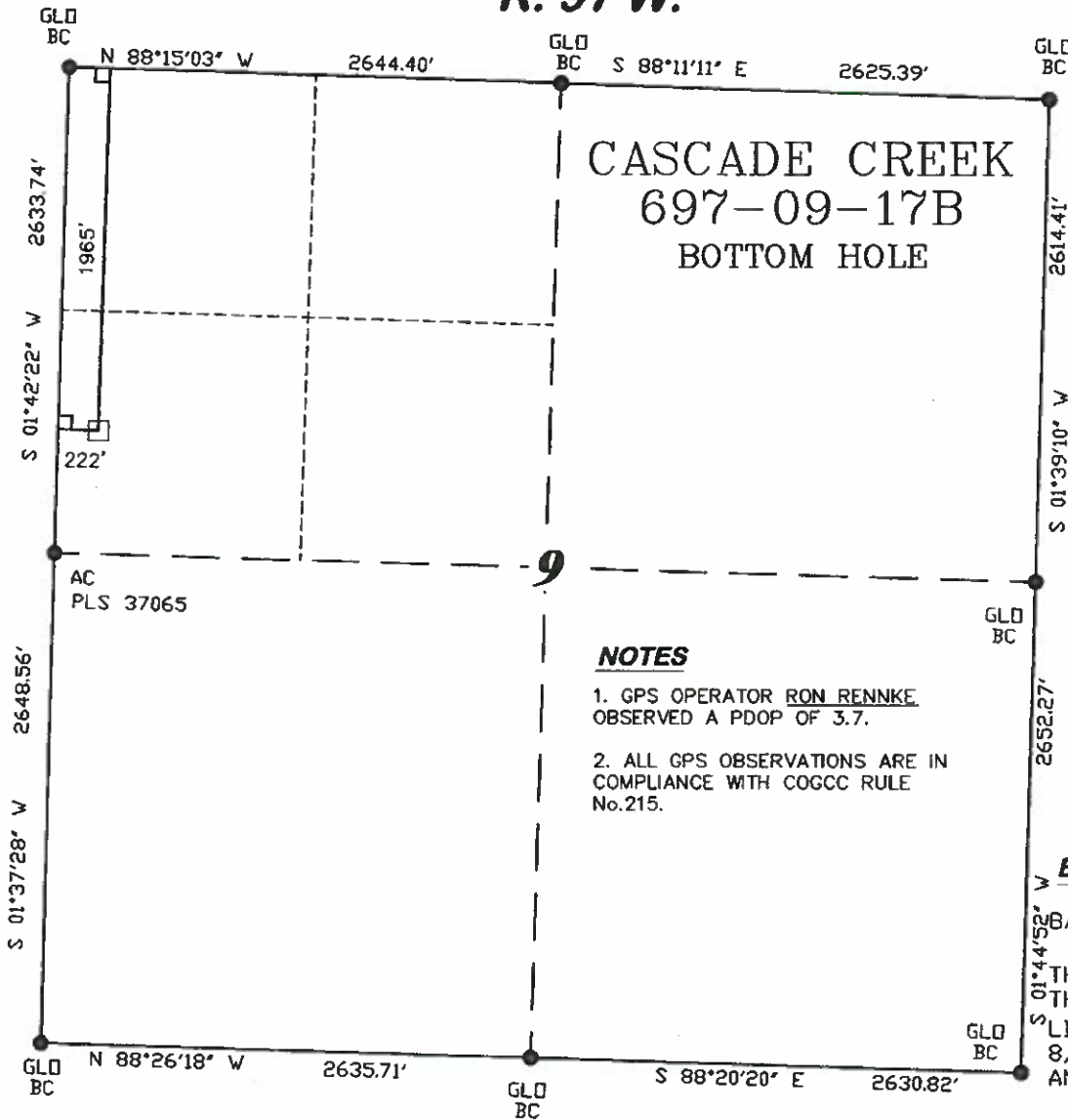
R. 97 W.



SCALE 1" = 1000'

T. 6 S.

**CASCADE CREEK
697-09-17B
BOTTOM HOLE**



NOTES

1. GPS OPERATOR RON RENNKE OBSERVED A PDOP OF 3.7.
2. ALL GPS OBSERVATIONS ARE IN COMPLIANCE WITH COGCC RULE No.215.

BHL LATITUDE (NAD 83)
NORTH 39.539309 DEG.
BHL LONGITUDE (NAD 83)
WEST 108.233372 DEG.
BHL NORTHING (NAD 83)
1632918
BHL EASTING (NAD 83)
2229232

BASIS OF BEARING/DATUM

SPCS CO CENTRAL NAD 27
BASED ON NGS TRIANGULATION
STATION "SHALE"
THE BASIS OF BEARINGS FOR
THIS SURVEY IS THE NORTH
LINE OF THE NE 1/4 OF SECTION
8, MONUMENTED BY GLO BC'S
AND BEARING N 88° 19' 25" W.



SURVEYOR'S STATEMENT

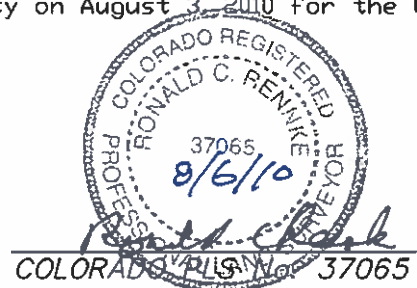
I, Ronald C. Rennke, an employee and agent for D. R. Griffin & Associates, Inc. state the plat hereon is a correct representation of a survey made under my authority on August 3, 2010 for the CASCADE CREEK 697-09-17B BOTTOM HOLE LOCATION.

LEGEND

- ☐ APPROXIMATE BOTTOM LOCATION
- FOUND MONUMENT
- L DENOTES 90° TIE

Notice: In accordance with Colorado State Law, any legal action based upon any defect in this survey plat must commence within three (3) years after first discovery of such defect. In no event, may any action based upon any defect in this survey plat be commenced more than ten (10) years from the date of certification shown hereon.

CC 608-41 PAD



DRGRIFFIN & ASSOCIATES, INC.
1414 ELK ST., ROCK SPRINGS, WY 82901

**PLAT OF BOTTOM HOLE LOCATION
FOR OXY USA WTP LP
BHL IN THE SWNW SECTION 9
1965' F/NL & 222' F/WL, SECTION 9,
T. 6 S., R. 97 W., 6th P.M.
GARFIELD COUNTY, COLORADO**

DRAWN: 10/31/08 - RCR

SCALE: 1" = 1000'

REVISED: 8/4/10 - DEH

DRG JOB No. 16569

Revised SHL/BHL Location

EXHIBIT 1