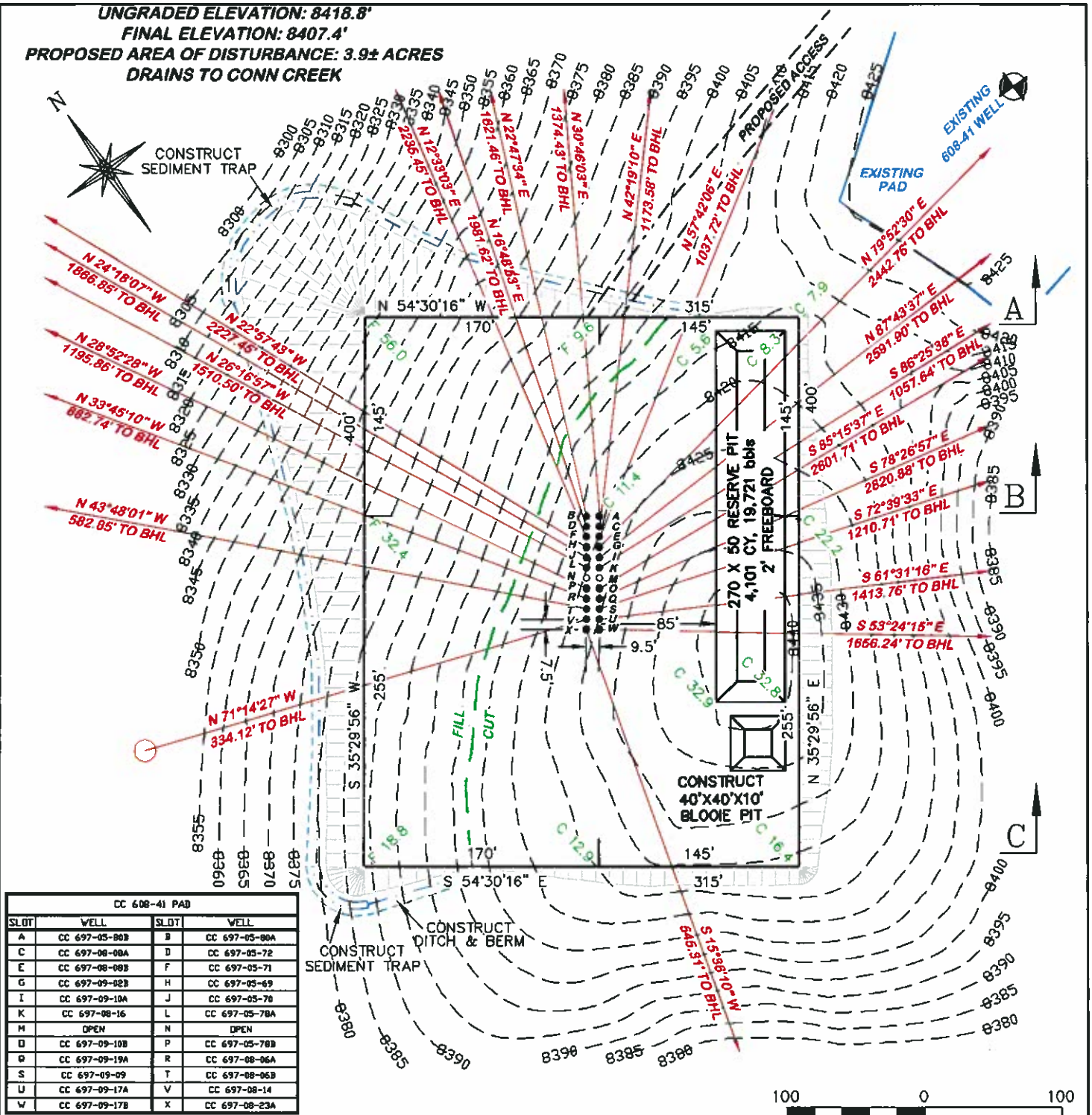


UNGRADED ELEVATION: 8418.8'
 FINAL ELEVATION: 8407.4'
 PROPOSED AREA OF DISTURBANCE: 3.9± ACRES
 DRAINS TO CONN CREEK



CC 608-41 PAD

CONSTRUCTION LAYOUT DRAWING 1 OF 5

OXY USA WTP LP

CASCADE CREEK 697-05-69, 70, 71, 72, 78A, 78B, 80A, 80B,
 697-08-06A, 06B, 08A, 08B, 14, 16, 23A, 697-09-02B, 09, 10A, 10B,
 17A, 17B, 19A,

NENE, SECTION 8, T. 6 S., R. 97 W., 6th P.M.,
 GARFIELD COUNTY, COLORADO

ESTIMATED EARTHWORK

ITEM	CUT	FILL	TOPSOIL	EXCESS
PAD	52,695 CY	49,280 CY	3,110 CY	305 CY
PIT	5,083 CY			5,083 CY
TOTALS	57,778 CY	49,280 CY	3,110 CY	5,388 CY



RIFFIN & ASSOCIATES, INC.
 1414 ELK ST., ROCK SPRINGS, WY 82901

(307) 362-5028

DRAWN: 10/31/08 - RCR

SCALE: 1" = 100'

REVISED: 8/4/10 - DEH

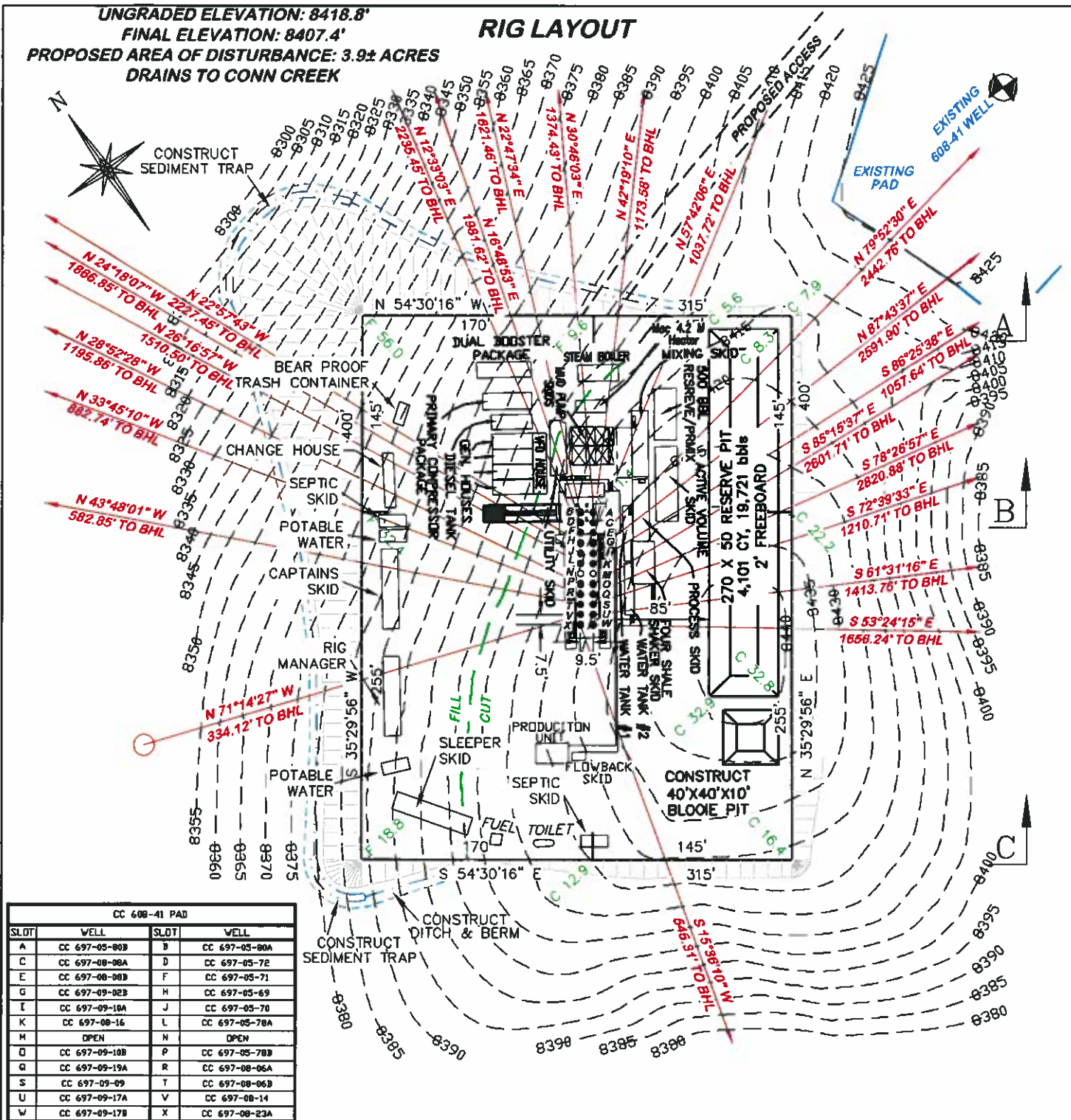
DRG JOB No. 16569

PAD EXPANSION

EXHIBIT 2

UNGRADED ELEVATION: 8418.8'
 FINAL ELEVATION: 8407.4'
 PROPOSED AREA OF DISTURBANCE: 3.9± ACRES
 DRAINS TO CONN CREEK

RIG LAYOUT



CC 608-41 PAD			
SLOT	WELL	SLOT	WELL
A	CC 697-05-00B	B	CC 697-05-00A
C	CC 697-08-06A	D	CC 697-05-72
E	CC 697-08-08B	F	CC 697-05-71
G	CC 697-09-02B	H	CC 697-05-69
I	CC 697-09-10A	J	CC 697-05-70
K	CC 697-08-16	L	CC 697-05-78A
M	OPEN	N	OPEN
O	CC 697-09-10B	P	CC 697-05-78B
Q	CC 697-09-19A	R	CC 697-08-06A
S	CC 697-09-09	T	CC 697-08-06B
U	CC 697-09-17A	V	CC 697-08-14
W	CC 697-09-17B	X	CC 697-08-23A

**BEFORE DIGGING
 CALL FOR
 UTILITY LINE LOCATION**

NOTE: THE EARTH QUANTITIES ON
 THIS DRAWING ARE ESTIMATED AND
 THE USE OF SAID QUANTITIES IS AT
 THE RESPONSIBILITY OF THE USER.

CC 608-41 PAD



DRG RIFFIN & ASSOCIATES, INC.
 (307) 382-5028 1414 ELK ST., ROCK SPRINGS, WY 82901

DRAWN: 10/31/08 - RCR

SCALE: 1" = 100'

REVISED: 8/4/10 - DEH

DRG JOB No. 16569

PAD EXPANSION

EXHIBIT 2A

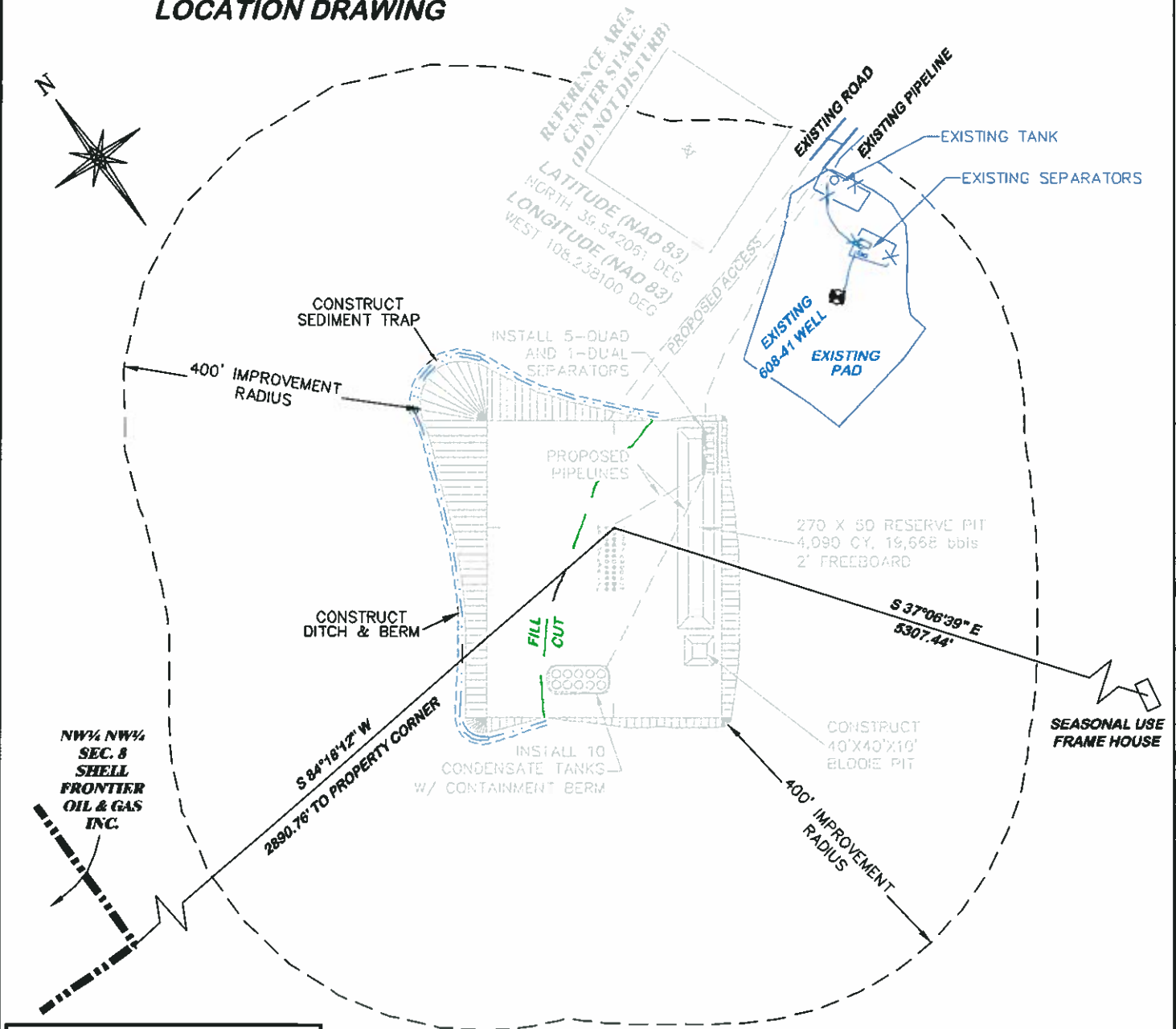
CONSTRUCTION LAYOUT DRAWING 2 OF 5

RIG LAYOUT

OXY USA WTP LP

CASCADE CREEK 697-05-69, 70, 71, 72, 78A, 78B, 80A, 80B,
 697-08-06A, 06B, 08A, 08B, 14, 16, 23A, 697-09-02B, 09, 10A,
 10B, 17A, 17B, 19A,
 NENE, SECTION 8, T. 6 S., R. 97 W., 6th P.M.,
 GARFIELD COUNTY, COLORADO

LOCATION DRAWING



CC 608-41 PAD			
SLOT	WELL	SLOT	WELL
A	CC 697-05-80B	B	CC 697-05-80A
C	CC 697-08-08A	D	CC 697-05-72
E	CC 697-08-08B	F	CC 697-05-71
G	CC 697-09-02B	H	CC 697-05-69
I	CC 697-09-10A	J	CC 697-05-70
K	CC 697-08-16	L	CC 697-05-78A
M	OPEN	N	OPEN
O	CC 697-09-10B	P	CC 697-05-78B
Q	CC 697-09-19A	R	CC 697-08-06A
S	CC 697-09-09	T	CC 697-08-06B
U	CC 697-09-17A	V	CC 697-08-14
W	CC 697-09-17B	X	CC 697-08-23A

**BEFORE DIGGING
CALL FOR
UTILITY LINE LOCATION**

CC 608-41 PAD



RIFFIN & ASSOCIATES, INC.
1414 ELK ST., ROCK SPRINGS, WY 82901

(307) 382-5028

DRAWN: 8/4/10 - DEH

SCALE: 1" = 200'

REVISED: N/A

DRG JOB No. 16569

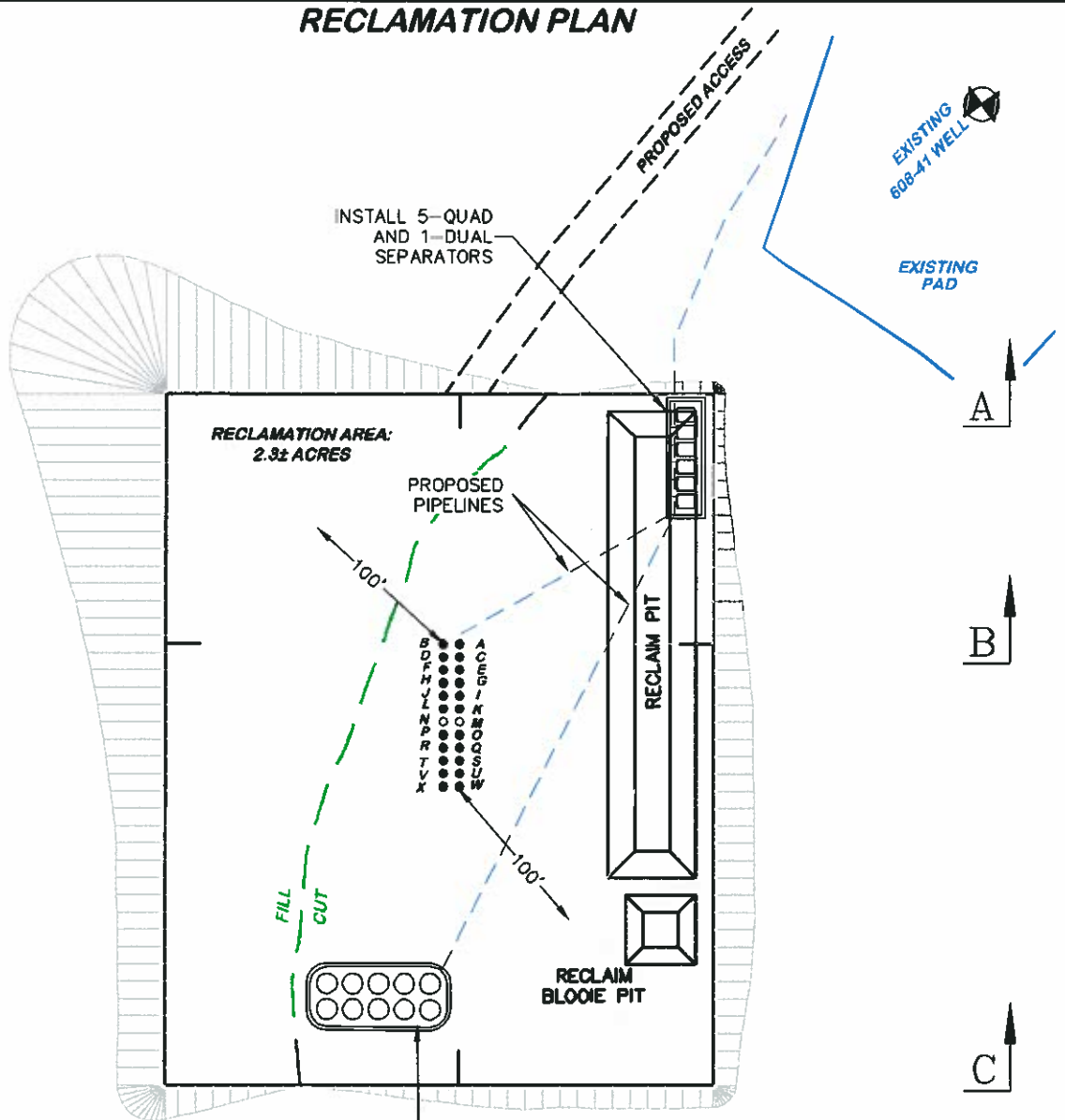
EXHIBIT 2D

LOCATION DRAWING

OXY USA WTP LP

**CASCADE CREEK 697-05-69, 70, 71, 72, 78A, 78B, 80A, 80B,
697-08-06A, 06B, 08A, 08B, 14, 16, 23A, 697-09-02B, 09, 10A,
10B, 17A, 17B, 19A,
NENE, SECTION 8, T. 6 S., R. 97 W., 6th P.M.,
GARFIELD COUNTY, COLORADO**

RECLAMATION PLAN



CC 608-41 PAD			
SLOT	WELL	SLOT	WELL
A	CC 697-05-80B	B	CC 697-05-80A
C	CC 697-08-08A	D	CC 697-05-72
E	CC 697-08-08B	F	CC 697-05-71
G	CC 697-09-02B	H	CC 697-05-69
I	CC 697-09-10A	J	CC 697-05-70
K	CC 697-08-16	L	CC 697-05-78A
M	OPEN	N	OPEN
O	CC 697-09-10B	P	CC 697-05-78B
Q	CC 697-09-19A	R	CC 697-08-06A
S	CC 697-09-09	T	CC 697-08-06B
U	CC 697-09-17A	V	CC 697-08-14
W	CC 697-09-17B	X	CC 697-08-23A

**BEFORE DIGGING
CALL FOR
UTILITY LINE LOCATION**

NOTE: THE EARTH QUANTITIES ON
THIS DRAWING ARE ESTIMATED AND
THE USE OF SAID QUANTITIES IS AT
THE RESPONSIBILITY OF THE USER.

CC 608-41 PAD



DRIFFIN & ASSOCIATES, INC.
1414 ELK ST., ROCK SPRINGS, WY 82901

CONSTRUCTION LAYOUT DRAWING 4 OF 5

PROPOSED RECLAMATION

OXY USA WTP LP

CASCADE CREEK 697-05-69, 70, 71, 72, 78A, 78B, 80A, 80B,
697-08-06A, 06B, 08A, 08B, 14, 16, 23A, 697-09-02B, 09, 10A,
10B, 17A, 17B, 19A,
NENE, SECTION 8, T. 6 S., R. 97 W., 6th P.M.,
GARFIELD COUNTY, COLORADO

DRAWN: 8/4/10 - DEH

SCALE: 1" = 100'

REVISED: N/A

DRG JOB No. 16569

EXHIBIT 2C