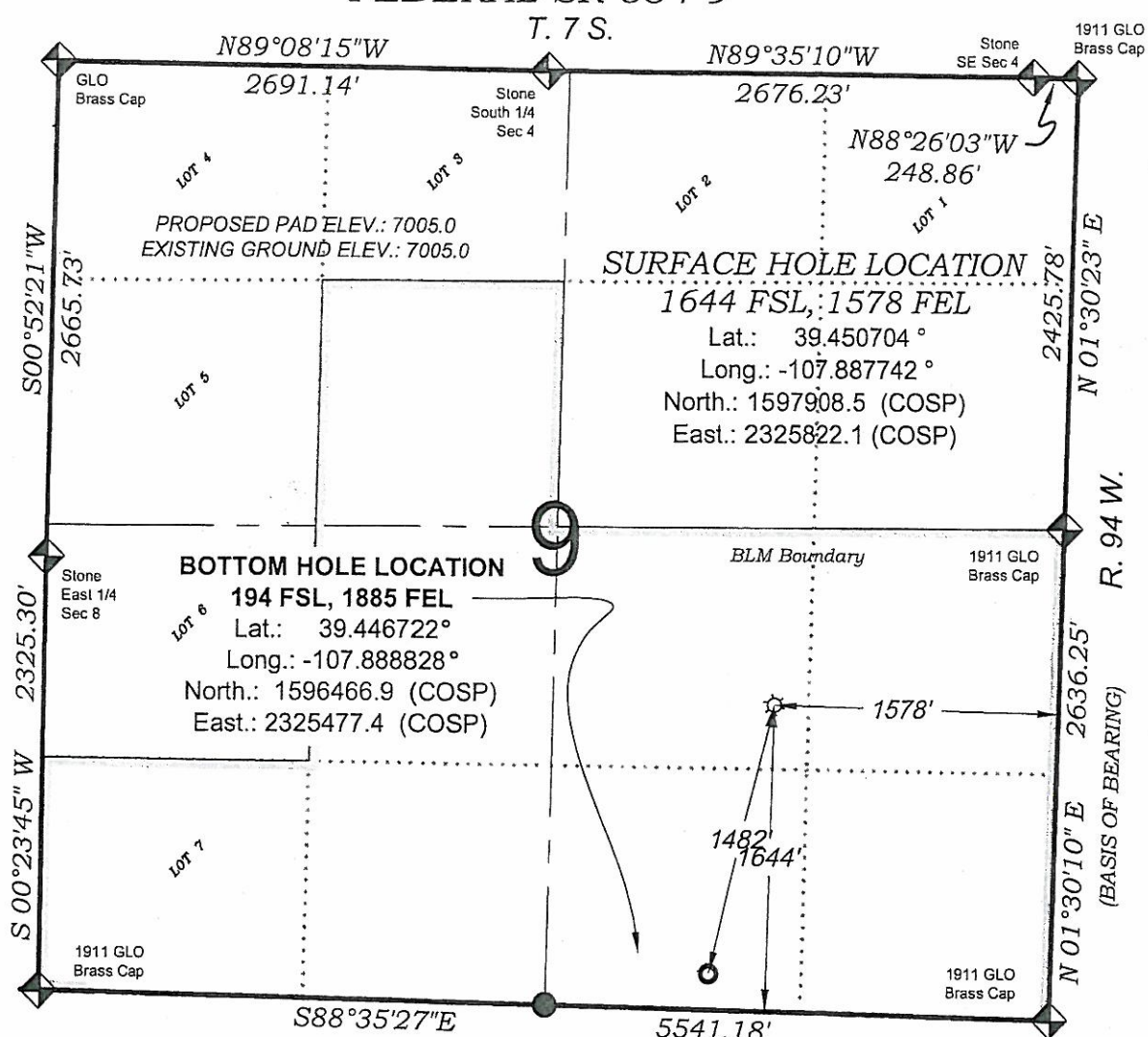


# FEDERAL SR 534-9



SEE CONSTRUCTION LAYOUT  
PLAT FOR VISIBLE IMPROVEMENTS  
WITHIN 400' OF THIS LOCATION



## - LEGEND -

FIELD LOCATED SECTION  
MONUMENTS AS DESCRIBED

FIELD SURVEYED  
WELL LOCATION

CALCULATED BOTTOM  
HOLE LOCATION

CALCULATED SECTION  
CORNER LOCATION

## SURVEYORS STATEMENT

I, MICHAEL J. LANGHORNE, A REGISTERED LAND SURVEYOR IN THE  
STATE OF COLORADO DO HEREBY CERTIFY THAT THE SURVEY SHOWN  
HEREON WAS PREPARED UNDER MY DIRECT SUPERVISION AND HAS  
BEEN STAKED ON THE GROUND AS SHOWN ON THE PLAT AND  
CHECKING THAT THIS MAP IS A TRUE REPRESENTATION THEREOF.

*Michael Langhorne*

MICHAEL J. LANGHORNE, COLORADO REGISTRATION NO. 36572  
FOR AND ON BEHALF OF  
BOOKCLIFF SURVEY SERVICES, INC.

## REFERENCES

- 1) EXTENSION SURVEY T. 7 S., R. 94 W., 6<sup>th</sup> P.M (GLO PLAT)
- 2) U.S.G.S. QUAD: RULISON, CO

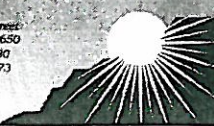
## NOTES

- 1) ELEVATIONS BASED ON N.A.V.D. 1988 PUBLISHED COORDINATES.
- 2) LATITUDES AND LONGITUDES ARE BASE ON NAD 83, PUBLISHED COORDINATES
- 3) STATE PLANE COORDINATES ARE BASED ON COLORADO CENTRAL ZONE, U.S. SURVEY FEET.
- 4) ELEVATION MASK SET TO 15"
- 5) GPS OPERATOR J. KIRKPATRICK, OBSERVED A PDOP 2.4 ON SURVEY POINT NUMBER 21261.
- 6) SURFACE AND BOTTOM HOLE LOCATIONS ARE MEASURED 90° FROM SECTION LINES.

WELL LOCATION PLAT Prepared for:  
**Williams** Williams Production, RMT  
NW1/4 SE1/4, SECTION 9  
T. 7 S., R. 94 W. of the 6<sup>th</sup> P.M.  
GARFIELD COUNTY, COLORADO

SURVEY DATE: 2/26/10  
MAP DATE: 6/17/10  
SCALE: 1" = 1000'  
PLAT: 1 of 1  
PROJECT: Williams

105 East Third Street  
Rt. 6, Colorado 81650  
Ph: (970) 625-1330  
Fax: (970) 625-2773



**BOOKCLIFF**  
Survey Services, Inc.