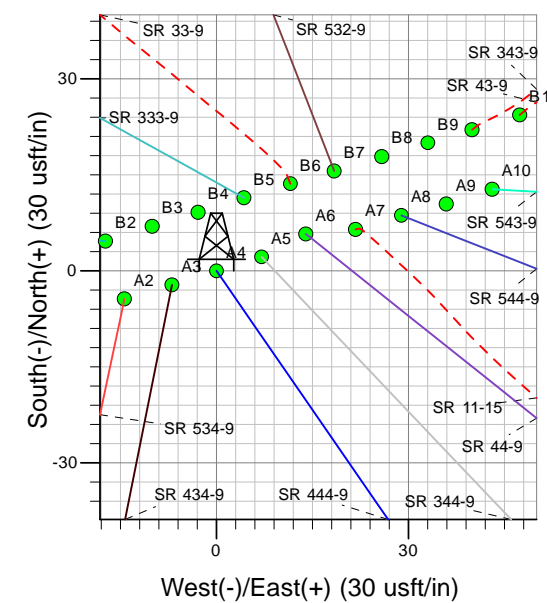
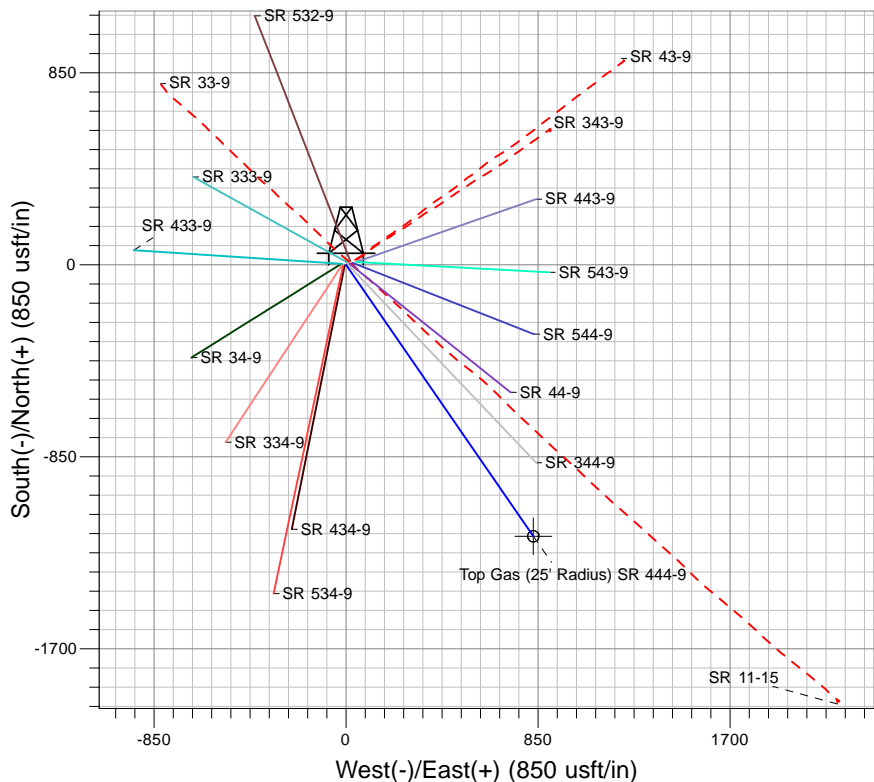
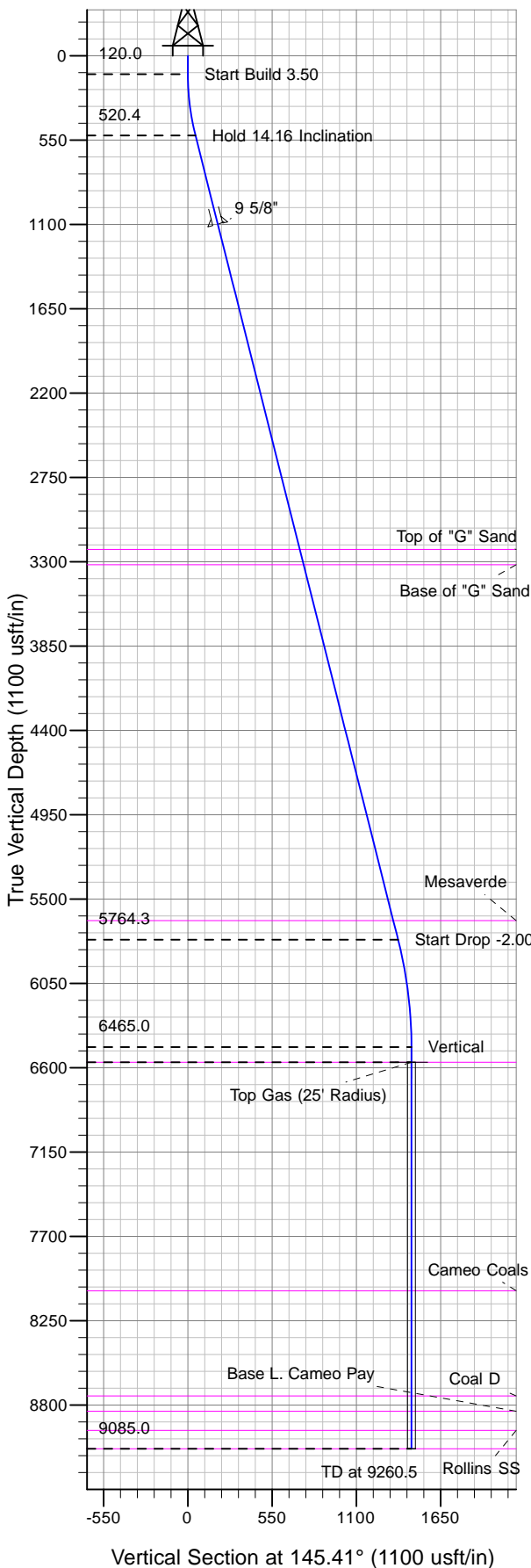




Well Name: SR 444-9
 Surface Location: SR 33-9 Pad
 North American Datum 1983 , US State Plane 1983 , Colorado Central Zone
 Ground Elevation: 7003.0
 +N/-S +E/-W Northing Easting Latitude Longitude Slot
 0.0 0.0 1597912.50 2325836.60 39° 27' 2.576 N 107° 53' 15.687 W A4
 KELLY BUSHING @ 7027.0usft (H&P (24' RKB) kjs)



Project: RU 09-07S-094W
 Site: SR 33-9 Pad
 Well: SR 444-9
 Plan #3 09Jun10 kjs

Azimuths to True North
 Magnetic North: 10.58°
 Magnetic Field
 Strength: 52493.1nT
 Dip Angle: 65.80°
 Date: 2/9/2009
 Model: IGRF2005-10

ANNOTATIONS									
TVD	MD	Inc	Azi	+N/-S	+E/-W	VSec	Departure	Annotation	
120.0	120.0	0.00	0.00	0.0	0.0	0.0	0.0	Start Build 3.50	
520.4	524.5	14.16	145.41	-40.9	28.2	49.7	49.7	Hold 14.16 Inclination	
5764.3	5932.7	14.16	145.41	-1129.9	779.1	1372.4	1372.4	Start Drop -2.00	
6465.0	6640.5	0.00	0.00	-1201.5	828.5	1459.5	1459.5	Vertical	
6565.0	6740.5	0.00	0.00	-1201.5	828.5	1459.5	1459.5	Top Gas	
9085.0	9260.5	0.00	0.00	-1201.5	828.5	1459.5	1459.5	TD at 9260.5	