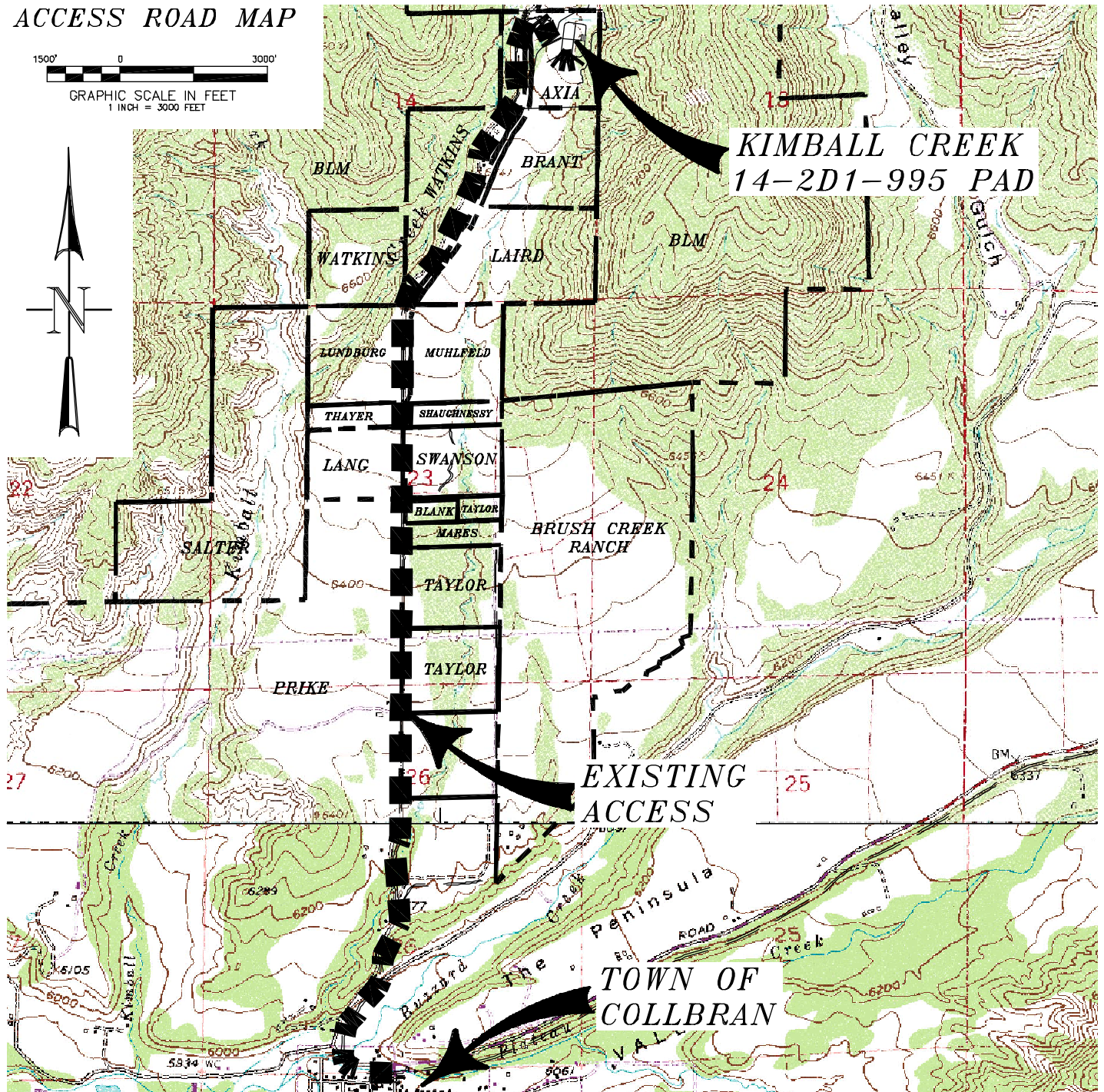
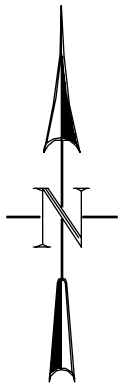


ACCESS ROAD MAP

1500' 0 3000'
GRAPHIC SCALE IN FEET
1 INCH = 3000 FEET



ACCESS:

FROM THE INTERSECTION OF COLORADO HIGHWAY 330 AND MAIN STREET IN COLLBRAN, PROCEED IN A GENERAL NORTHERLY DIRECTION ALONG MAIN STREET ± 0.2 MILES TO AN INTERSECTION WITH RODEO ROAD, TURN LEFT ON RODEO ROAD WHICH BECOMES KIMBALL CREEK ROAD AND CONTINUE IN A GENERAL NORTHERLY DIRECTION ± 2.9 MILES TO AN INTERSECTION WITH AN EXISTING DRIVEWAY ON THE RIGHT, PROCEED RIGHT IN A GENERAL SOUTHEASTERLY DIRECTION PAST AN EXISTING BARN APPROXIMATELY ± 0.1 MILES TO THE PROPOSED KIMBALL CREEK 14-2D1-995 WELL PAD, BEING THE LOCATION.



CONSTRUCTION SURVEYS, INC. Kimball Creek 14-2D1-995
0012 SUNRISE BLVD.
SILT, CO 81652
(970)876-5753

SE 1/4 NE 1/4 SECTION 14, T. 9 S., R. 95 W.
AXIA ENERGY

SCALE: 1" = 3000'

SHEET 4 OF 11