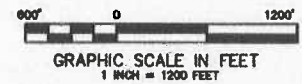
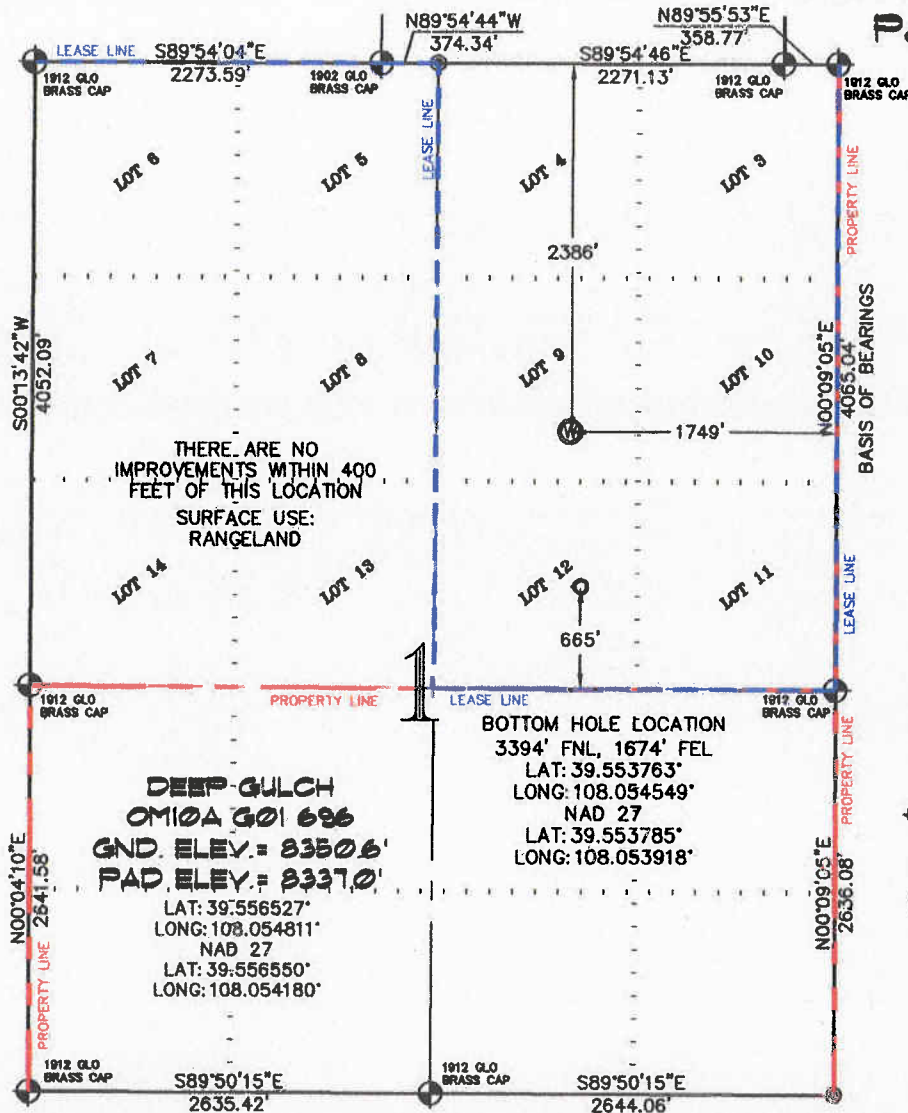


SEC. 1, T. 6 S., R. 96 W. OF THE 6TH P.M. Old Mountain G01-696

Pad Location



-LEGEND-

- SECTION CORNER LOCATION BASED ON GLO RECORD INFORMATION
- ⊕ FIELD SURVEYED SECTION CORNER LOCATIONS
- ⊙ FIELD SURVEYED WELL LOCATION
- CALCULATED BOTTOM HOLE LOCATION

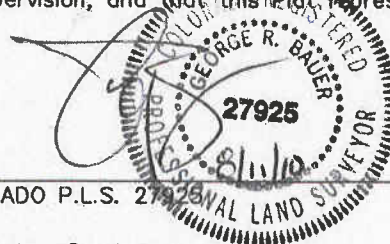
THIS WELL LOCATION PLAT WAS PREPARED FOR BERRY PETROLEUM COMPANY TO LOCATE THE DEEP GULCH OM10A G01 696 WELL, 2386 FEET FROM THE NORTH LINE AND 1749 FEET FROM THE EAST LINE IN THE LOT 9 OF SECTION 1, T. 6 S., R. 96 W. OF THE 6TH P.M. GARFIELD COUNTY, COLORADO.

REFERENCE NOTES

- 1) T. 6 S., R. 96 W., 6TH P.M. GLO PLAT.
- 2) U.S.G.S. QUAD: FORKED GULCH, CO
- 3) ELEVATIONS BASED ON N.A.V.D. 1988
- 4) LATITUDES AND LONGITUDES ARE BASED ON NAD 83, COLORADO CENTRAL ZONE.
- 5) GPS OPERATOR IVAN MARTIN, OBSERVED A PDOP OF 2.6.
- 6) ALL GPS OBSERVATIONS ARE IN COMPLIANCE WITH COGCC RULE NO. 215.
- 7) SURFACE AND BOTTOM HOLE LOCATIONS ARE MEASURED 90° FROM SECTION LINES.

SURVEYOR'S CERTIFICATE

I, George R. Bauer: a Professional Land Surveyor in the State of Colorado do hereby certify that this Survey was made under my direct supervision, and that this Plat represents said Survey.



COLORADO P.L.S. 27925



CONSTRUCTION SURVEYS, INC.
2012 SUNRISE BLVD.
SILT, CO 81652
(970) 876-5753

VIEW: 11

SURVEYED: 06/30/10	SCALE: 1" = 1200'
DRAFTED: 08/05/10	DWG: Berry\OldMountainG01-696.dwg
CHECKED: 08/10/10	SHEET: 1 of 11