

Denver Division- Colorado

**DJ - Hereford Ranch
Garden Creek 20-28H
Garden Creek 20-28H
Original Wellbore**

Plan: APD Directional Plan

Standard Planning Report

17 June, 2010

EOG RESOURCES INC.

Planning Report

Database:	EDM	Local Co-ordinate Reference:	Site Garden Creek 20-28H
Company:	Denver Division- Colorado	TVD Reference:	Rig @ 5177.00ft (TBD)
Project:	DJ - Hereford Ranch	MD Reference:	Rig @ 5177.00ft (TBD)
Site:	Garden Creek 20-28H	North Reference:	True
Well:	Garden Creek 20-28H	Survey Calculation Method:	Minimum Curvature
Wellbore:	Original Wellbore		
Design:	APD Directional Plan		

Project	DJ - Hereford Ranch, Weld County		
Map System:	US State Plane 1927 (Exact solution)	System Datum:	Mean Sea Level
Geo Datum:	NAD 1927 (NADCON CONUS)		
Map Zone:	Colorado North 501		

Site	Garden Creek 20-28H		
Site Position:		Northing:	568,344.81ft
From:	Lat/Long	Easting:	2,326,928.95ft
Position Uncertainty:	0.00 ft	Slot Radius:	"
		Latitude:	40° 53' 15.083 N
		Longitude:	104° 19' 3.522 W
		Grid Convergence:	0.76 deg

Well	Garden Creek 20-28H		
Well Position	+N/-S	0.00 ft	Northing: 568,344.81ft
	+E/-W	0.00 ft	Easting: 2,326,928.95 ft
Position Uncertainty	0.00 ft	Wellhead Elevation:	ft
		Latitude:	40° 53' 15.083 N
		Longitude:	104° 19' 3.522 W
		Ground Level:	5,152.00ft

Wellbore	Original Wellbore				
Magnetics	Model Name	Sample Date	Declination (deg)	Dip Angle (deg)	Field Strength (nT)
	IGRF200510	6/17/2010	8.76	67.56	53,554

Design	APD Directional Plan			
Audit Notes:				
Version:	Phase:	PROTOTYPE	Tie On Depth:	0.00
Vertical Section:	Depth From (TVD) (ft)	+N/-S (ft)	+E/-W (ft)	Direction (deg)
	0.00	0.00	0.00	317.95

Plan Sections										
Measured Depth (ft)	Inclination (deg)	Azimuth (deg)	Vertical Depth (ft)	+N/-S (ft)	+E/-W (ft)	Dogleg Rate (°/100ft)	Build Rate (°/100ft)	Turn Rate (°/100ft)	TFO (deg)	Target
0.00	0.00	0.00	0.00	0.00	0.00	0.00	0.00	0.00	0.00	
6,560.53	0.00	0.00	6,560.53	0.00	0.00	0.00	0.00	0.00	0.00	
7,310.54	90.00	317.95	7,038.00	354.56	-319.79	12.00	12.00	0.00	317.95	
12,768.89	90.00	317.95	7,038.00	4,407.80	-3,975.58	0.00	0.00	0.00	0.00	Garden Creek 20-2

EOG RESOURCES INC.

Planning Report

Database:	EDM	Local Co-ordinate Reference:	Site Garden Creek 20-28H
Company:	Denver Division- Colorado	TVD Reference:	Rig @ 5177.00ft (TBD)
Project:	DJ - Hereford Ranch	MD Reference:	Rig @ 5177.00ft (TBD)
Site:	Garden Creek 20-28H	North Reference:	True
Well:	Garden Creek 20-28H	Survey Calculation Method:	Minimum Curvature
Wellbore:	Original Wellbore		
Design:	APD Directional Plan		

Planned Survey									
Measured Depth (ft)	Inclination (deg)	Azimuth (deg)	Vertical Depth (ft)	+N/-S (ft)	+E/-W (ft)	Vertical Section (ft)	Dogleg Rate (°/100ft)	Build Rate (°/100ft)	Turn Rate (°/100ft)
0.00	0.00	0.00	0.00	0.00	0.00	0.00	0.00	0.00	0.00
100.00	0.00	0.00	100.00	0.00	0.00	0.00	0.00	0.00	0.00
200.00	0.00	0.00	200.00	0.00	0.00	0.00	0.00	0.00	0.00
300.00	0.00	0.00	300.00	0.00	0.00	0.00	0.00	0.00	0.00
400.00	0.00	0.00	400.00	0.00	0.00	0.00	0.00	0.00	0.00
500.00	0.00	0.00	500.00	0.00	0.00	0.00	0.00	0.00	0.00
600.00	0.00	0.00	600.00	0.00	0.00	0.00	0.00	0.00	0.00
700.00	0.00	0.00	700.00	0.00	0.00	0.00	0.00	0.00	0.00
800.00	0.00	0.00	800.00	0.00	0.00	0.00	0.00	0.00	0.00
900.00	0.00	0.00	900.00	0.00	0.00	0.00	0.00	0.00	0.00
1,000.00	0.00	0.00	1,000.00	0.00	0.00	0.00	0.00	0.00	0.00
1,100.00	0.00	0.00	1,100.00	0.00	0.00	0.00	0.00	0.00	0.00
1,160.00	0.00	0.00	1,160.00	0.00	0.00	0.00	0.00	0.00	0.00
9 5/8"									
1,200.00	0.00	0.00	1,200.00	0.00	0.00	0.00	0.00	0.00	0.00
1,300.00	0.00	0.00	1,300.00	0.00	0.00	0.00	0.00	0.00	0.00
1,400.00	0.00	0.00	1,400.00	0.00	0.00	0.00	0.00	0.00	0.00
1,500.00	0.00	0.00	1,500.00	0.00	0.00	0.00	0.00	0.00	0.00
1,600.00	0.00	0.00	1,600.00	0.00	0.00	0.00	0.00	0.00	0.00
1,700.00	0.00	0.00	1,700.00	0.00	0.00	0.00	0.00	0.00	0.00
1,800.00	0.00	0.00	1,800.00	0.00	0.00	0.00	0.00	0.00	0.00
1,900.00	0.00	0.00	1,900.00	0.00	0.00	0.00	0.00	0.00	0.00
2,000.00	0.00	0.00	2,000.00	0.00	0.00	0.00	0.00	0.00	0.00
2,100.00	0.00	0.00	2,100.00	0.00	0.00	0.00	0.00	0.00	0.00
2,200.00	0.00	0.00	2,200.00	0.00	0.00	0.00	0.00	0.00	0.00
2,300.00	0.00	0.00	2,300.00	0.00	0.00	0.00	0.00	0.00	0.00
2,400.00	0.00	0.00	2,400.00	0.00	0.00	0.00	0.00	0.00	0.00
2,500.00	0.00	0.00	2,500.00	0.00	0.00	0.00	0.00	0.00	0.00
2,600.00	0.00	0.00	2,600.00	0.00	0.00	0.00	0.00	0.00	0.00
2,700.00	0.00	0.00	2,700.00	0.00	0.00	0.00	0.00	0.00	0.00
2,800.00	0.00	0.00	2,800.00	0.00	0.00	0.00	0.00	0.00	0.00
2,900.00	0.00	0.00	2,900.00	0.00	0.00	0.00	0.00	0.00	0.00
3,000.00	0.00	0.00	3,000.00	0.00	0.00	0.00	0.00	0.00	0.00
3,100.00	0.00	0.00	3,100.00	0.00	0.00	0.00	0.00	0.00	0.00
3,200.00	0.00	0.00	3,200.00	0.00	0.00	0.00	0.00	0.00	0.00
3,300.00	0.00	0.00	3,300.00	0.00	0.00	0.00	0.00	0.00	0.00
3,400.00	0.00	0.00	3,400.00	0.00	0.00	0.00	0.00	0.00	0.00
3,500.00	0.00	0.00	3,500.00	0.00	0.00	0.00	0.00	0.00	0.00
3,600.00	0.00	0.00	3,600.00	0.00	0.00	0.00	0.00	0.00	0.00
3,700.00	0.00	0.00	3,700.00	0.00	0.00	0.00	0.00	0.00	0.00
3,800.00	0.00	0.00	3,800.00	0.00	0.00	0.00	0.00	0.00	0.00
3,900.00	0.00	0.00	3,900.00	0.00	0.00	0.00	0.00	0.00	0.00
4,000.00	0.00	0.00	4,000.00	0.00	0.00	0.00	0.00	0.00	0.00
4,100.00	0.00	0.00	4,100.00	0.00	0.00	0.00	0.00	0.00	0.00
4,200.00	0.00	0.00	4,200.00	0.00	0.00	0.00	0.00	0.00	0.00
4,300.00	0.00	0.00	4,300.00	0.00	0.00	0.00	0.00	0.00	0.00
4,400.00	0.00	0.00	4,400.00	0.00	0.00	0.00	0.00	0.00	0.00
4,500.00	0.00	0.00	4,500.00	0.00	0.00	0.00	0.00	0.00	0.00
4,600.00	0.00	0.00	4,600.00	0.00	0.00	0.00	0.00	0.00	0.00
4,700.00	0.00	0.00	4,700.00	0.00	0.00	0.00	0.00	0.00	0.00
4,800.00	0.00	0.00	4,800.00	0.00	0.00	0.00	0.00	0.00	0.00
4,900.00	0.00	0.00	4,900.00	0.00	0.00	0.00	0.00	0.00	0.00
5,000.00	0.00	0.00	5,000.00	0.00	0.00	0.00	0.00	0.00	0.00

EOG RESOURCES INC.

Planning Report

Database:	EDM	Local Co-ordinate Reference:	Site Garden Creek 20-28H
Company:	Denver Division- Colorado	TVD Reference:	Rig @ 5177.00ft (TBD)
Project:	DJ - Hereford Ranch	MD Reference:	Rig @ 5177.00ft (TBD)
Site:	Garden Creek 20-28H	North Reference:	True
Well:	Garden Creek 20-28H	Survey Calculation Method:	Minimum Curvature
Wellbore:	Original Wellbore		
Design:	APD Directional Plan		

Planned Survey									
Measured Depth (ft)	Inclination (deg)	Azimuth (deg)	Vertical Depth (ft)	+N/-S (ft)	+E/-W (ft)	Vertical Section (ft)	Dogleg Rate (°/100ft)	Build Rate (°/100ft)	Turn Rate (°/100ft)
5,100.00	0.00	0.00	5,100.00	0.00	0.00	0.00	0.00	0.00	0.00
5,200.00	0.00	0.00	5,200.00	0.00	0.00	0.00	0.00	0.00	0.00
5,300.00	0.00	0.00	5,300.00	0.00	0.00	0.00	0.00	0.00	0.00
5,400.00	0.00	0.00	5,400.00	0.00	0.00	0.00	0.00	0.00	0.00
5,500.00	0.00	0.00	5,500.00	0.00	0.00	0.00	0.00	0.00	0.00
5,600.00	0.00	0.00	5,600.00	0.00	0.00	0.00	0.00	0.00	0.00
5,700.00	0.00	0.00	5,700.00	0.00	0.00	0.00	0.00	0.00	0.00
5,800.00	0.00	0.00	5,800.00	0.00	0.00	0.00	0.00	0.00	0.00
5,900.00	0.00	0.00	5,900.00	0.00	0.00	0.00	0.00	0.00	0.00
6,000.00	0.00	0.00	6,000.00	0.00	0.00	0.00	0.00	0.00	0.00
6,100.00	0.00	0.00	6,100.00	0.00	0.00	0.00	0.00	0.00	0.00
6,200.00	0.00	0.00	6,200.00	0.00	0.00	0.00	0.00	0.00	0.00
6,300.00	0.00	0.00	6,300.00	0.00	0.00	0.00	0.00	0.00	0.00
6,400.00	0.00	0.00	6,400.00	0.00	0.00	0.00	0.00	0.00	0.00
6,500.00	0.00	0.00	6,500.00	0.00	0.00	0.00	0.00	0.00	0.00
6,560.53	0.00	0.00	6,560.53	0.00	0.00	0.00	0.00	0.00	0.00
6,600.00	4.74	317.95	6,599.96	1.21	-1.09	1.63	12.00	12.00	0.00
6,700.00	16.74	317.95	6,698.03	15.02	-13.55	20.22	12.00	12.00	0.00
6,800.00	28.74	317.95	6,790.09	43.67	-39.38	58.80	12.00	12.00	0.00
6,900.00	40.74	317.95	6,872.12	85.90	-77.48	115.68	12.00	12.00	0.00
7,000.00	52.74	317.95	6,940.53	139.88	-126.16	188.36	12.00	12.00	0.00
7,100.00	64.74	317.95	6,992.33	203.23	-183.30	273.69	12.00	12.00	0.00
7,200.00	76.74	317.95	7,025.26	273.21	-246.41	367.91	12.00	12.00	0.00
7,300.00	88.74	317.95	7,037.88	346.73	-312.73	466.93	12.00	12.00	0.00
7,310.54	90.00	317.95	7,038.00	354.56	-319.79	477.47	12.00	12.00	0.00
7"									
7,400.00	90.00	317.95	7,038.00	420.99	-379.71	566.93	0.00	0.00	0.00
7,500.00	90.00	317.95	7,038.00	495.25	-446.68	666.93	0.00	0.00	0.00
7,600.00	90.00	317.95	7,038.00	569.50	-513.66	766.93	0.00	0.00	0.00
7,700.00	90.00	317.95	7,038.00	643.76	-580.64	866.93	0.00	0.00	0.00
7,800.00	90.00	317.95	7,038.00	718.02	-647.61	966.93	0.00	0.00	0.00
7,900.00	90.00	317.95	7,038.00	792.28	-714.59	1,066.93	0.00	0.00	0.00
8,000.00	90.00	317.95	7,038.00	866.54	-781.56	1,166.93	0.00	0.00	0.00
8,100.00	90.00	317.95	7,038.00	940.79	-848.54	1,266.93	0.00	0.00	0.00
8,200.00	90.00	317.95	7,038.00	1,015.05	-915.52	1,366.93	0.00	0.00	0.00
8,300.00	90.00	317.95	7,038.00	1,089.31	-982.49	1,466.93	0.00	0.00	0.00
8,400.00	90.00	317.95	7,038.00	1,163.57	-1,049.47	1,566.93	0.00	0.00	0.00
8,500.00	90.00	317.95	7,038.00	1,237.82	-1,116.44	1,666.93	0.00	0.00	0.00
8,600.00	90.00	317.95	7,038.00	1,312.08	-1,183.42	1,766.93	0.00	0.00	0.00
8,700.00	90.00	317.95	7,038.00	1,386.34	-1,250.40	1,866.93	0.00	0.00	0.00
8,800.00	90.00	317.95	7,038.00	1,460.60	-1,317.37	1,966.93	0.00	0.00	0.00
8,900.00	90.00	317.95	7,038.00	1,534.85	-1,384.35	2,066.93	0.00	0.00	0.00
9,000.00	90.00	317.95	7,038.00	1,609.11	-1,451.32	2,166.93	0.00	0.00	0.00
9,100.00	90.00	317.95	7,038.00	1,683.37	-1,518.30	2,266.93	0.00	0.00	0.00
9,200.00	90.00	317.95	7,038.00	1,757.63	-1,585.28	2,366.93	0.00	0.00	0.00
9,300.00	90.00	317.95	7,038.00	1,831.89	-1,652.25	2,466.93	0.00	0.00	0.00
9,400.00	90.00	317.95	7,038.00	1,906.14	-1,719.23	2,566.93	0.00	0.00	0.00
9,500.00	90.00	317.95	7,038.00	1,980.40	-1,786.20	2,666.93	0.00	0.00	0.00
9,600.00	90.00	317.95	7,038.00	2,054.66	-1,853.18	2,766.93	0.00	0.00	0.00
9,700.00	90.00	317.95	7,038.00	2,128.92	-1,920.16	2,866.93	0.00	0.00	0.00
9,800.00	90.00	317.95	7,038.00	2,203.17	-1,987.13	2,966.93	0.00	0.00	0.00
9,900.00	90.00	317.95	7,038.00	2,277.43	-2,054.11	3,066.93	0.00	0.00	0.00
10,000.00	90.00	317.95	7,038.00	2,351.69	-2,121.09	3,166.93	0.00	0.00	0.00

EOG RESOURCES INC.

Planning Report

Database:	EDM	Local Co-ordinate Reference:	Site Garden Creek 20-28H
Company:	Denver Division- Colorado	TVD Reference:	Rig @ 5177.00ft (TBD)
Project:	DJ - Hereford Ranch	MD Reference:	Rig @ 5177.00ft (TBD)
Site:	Garden Creek 20-28H	North Reference:	True
Well:	Garden Creek 20-28H	Survey Calculation Method:	Minimum Curvature
Wellbore:	Original Wellbore		
Design:	APD Directional Plan		

Planned Survey									
Measured Depth (ft)	Inclination (deg)	Azimuth (deg)	Vertical Depth (ft)	+N/-S (ft)	+E/-W (ft)	Vertical Section (ft)	Dogleg Rate (°/100ft)	Build Rate (°/100ft)	Turn Rate (°/100ft)
10,100.00	90.00	317.95	7,038.00	2,425.95	-2,188.06	3,266.93	0.00	0.00	0.00
10,200.00	90.00	317.95	7,038.00	2,500.20	-2,255.04	3,366.93	0.00	0.00	0.00
10,300.00	90.00	317.95	7,038.00	2,574.46	-2,322.01	3,466.93	0.00	0.00	0.00
10,400.00	90.00	317.95	7,038.00	2,648.72	-2,388.99	3,566.93	0.00	0.00	0.00
10,500.00	90.00	317.95	7,038.00	2,722.98	-2,455.97	3,666.93	0.00	0.00	0.00
10,600.00	90.00	317.95	7,038.00	2,797.24	-2,522.94	3,766.93	0.00	0.00	0.00
10,700.00	90.00	317.95	7,038.00	2,871.49	-2,589.92	3,866.93	0.00	0.00	0.00
10,800.00	90.00	317.95	7,038.00	2,945.75	-2,656.89	3,966.93	0.00	0.00	0.00
10,900.00	90.00	317.95	7,038.00	3,020.01	-2,723.87	4,066.93	0.00	0.00	0.00
11,000.00	90.00	317.95	7,038.00	3,094.27	-2,790.85	4,166.93	0.00	0.00	0.00
11,100.00	90.00	317.95	7,038.00	3,168.52	-2,857.82	4,266.93	0.00	0.00	0.00
11,200.00	90.00	317.95	7,038.00	3,242.78	-2,924.80	4,366.93	0.00	0.00	0.00
11,300.00	90.00	317.95	7,038.00	3,317.04	-2,991.77	4,466.93	0.00	0.00	0.00
11,400.00	90.00	317.95	7,038.00	3,391.30	-3,058.75	4,566.93	0.00	0.00	0.00
11,500.00	90.00	317.95	7,038.00	3,465.56	-3,125.73	4,666.93	0.00	0.00	0.00
11,600.00	90.00	317.95	7,038.00	3,539.81	-3,192.70	4,766.93	0.00	0.00	0.00
11,700.00	90.00	317.95	7,038.00	3,614.07	-3,259.68	4,866.93	0.00	0.00	0.00
11,800.00	90.00	317.95	7,038.00	3,688.33	-3,326.65	4,966.93	0.00	0.00	0.00
11,900.00	90.00	317.95	7,038.00	3,762.59	-3,393.63	5,066.93	0.00	0.00	0.00
12,000.00	90.00	317.95	7,038.00	3,836.84	-3,460.61	5,166.93	0.00	0.00	0.00
12,100.00	90.00	317.95	7,038.00	3,911.10	-3,527.58	5,266.93	0.00	0.00	0.00
12,200.00	90.00	317.95	7,038.00	3,985.36	-3,594.56	5,366.93	0.00	0.00	0.00
12,300.00	90.00	317.95	7,038.00	4,059.62	-3,661.53	5,466.93	0.00	0.00	0.00
12,400.00	90.00	317.95	7,038.00	4,133.87	-3,728.51	5,566.93	0.00	0.00	0.00
12,500.00	90.00	317.95	7,038.00	4,208.13	-3,795.49	5,666.93	0.00	0.00	0.00
12,600.00	90.00	317.95	7,038.00	4,282.39	-3,862.46	5,766.93	0.00	0.00	0.00
12,700.00	90.00	317.95	7,038.00	4,356.65	-3,929.44	5,866.93	0.00	0.00	0.00
12,768.89	90.00	317.95	7,038.00	4,407.80	-3,975.58	5,935.82	0.00	0.00	0.00
Garden Creek 20-28H (BHL)									

Targets									
Target Name	Dip Angle (deg)	Dip Dir. (deg)	TVD (ft)	+N/-S (ft)	+E/-W (ft)	Northing (ft)	Easting (ft)	Latitude	Longitude
- hit/miss target									
- Shape									
Garden Creek 20-28H	0.00	0.00	7,038.00	4,407.80	-3,975.58	572,699.20	2,322,894.97	40° 53' 58.632 N	104° 19' 55.290 W
- plan hits target center									
- Point									

Casing Points					
Measured Depth (ft)	Vertical Depth (ft)	Name	Casing Diameter (")	Hole Diameter (")	
1,160.00	1,160.00	9 5/8"	9-5/8	13-1/2	
7,310.54	7,038.00	7"	7	8-3/4	
12,768.89	7,038.00	4 1/2	4-1/2	6	

Garden Creek 20-28H

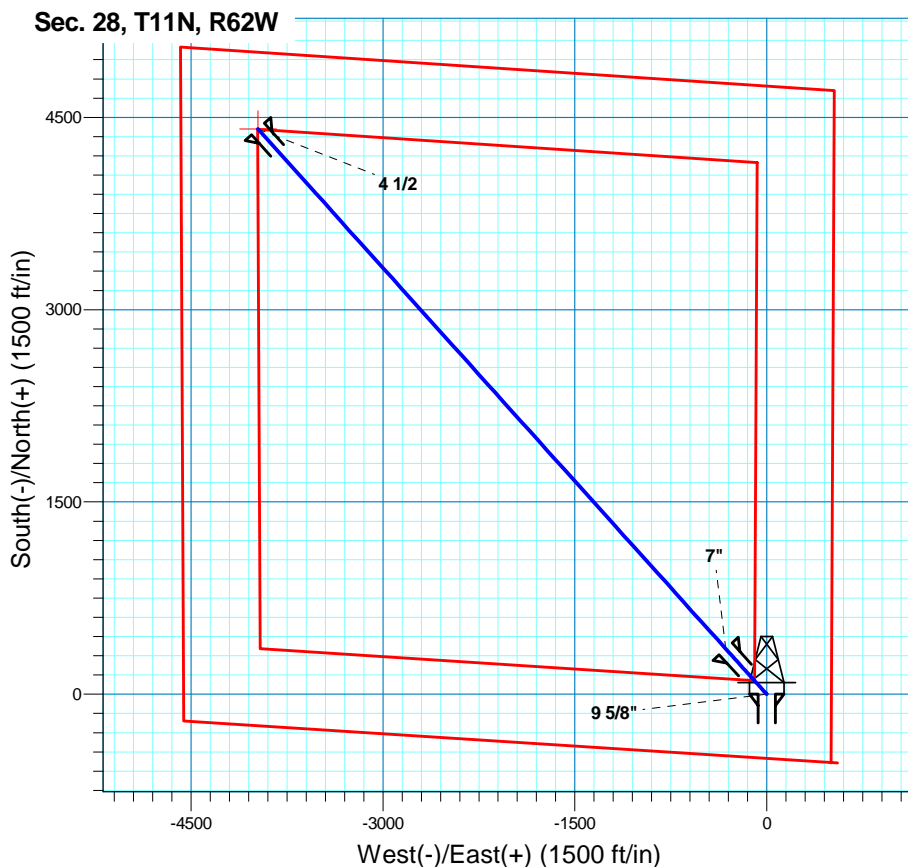
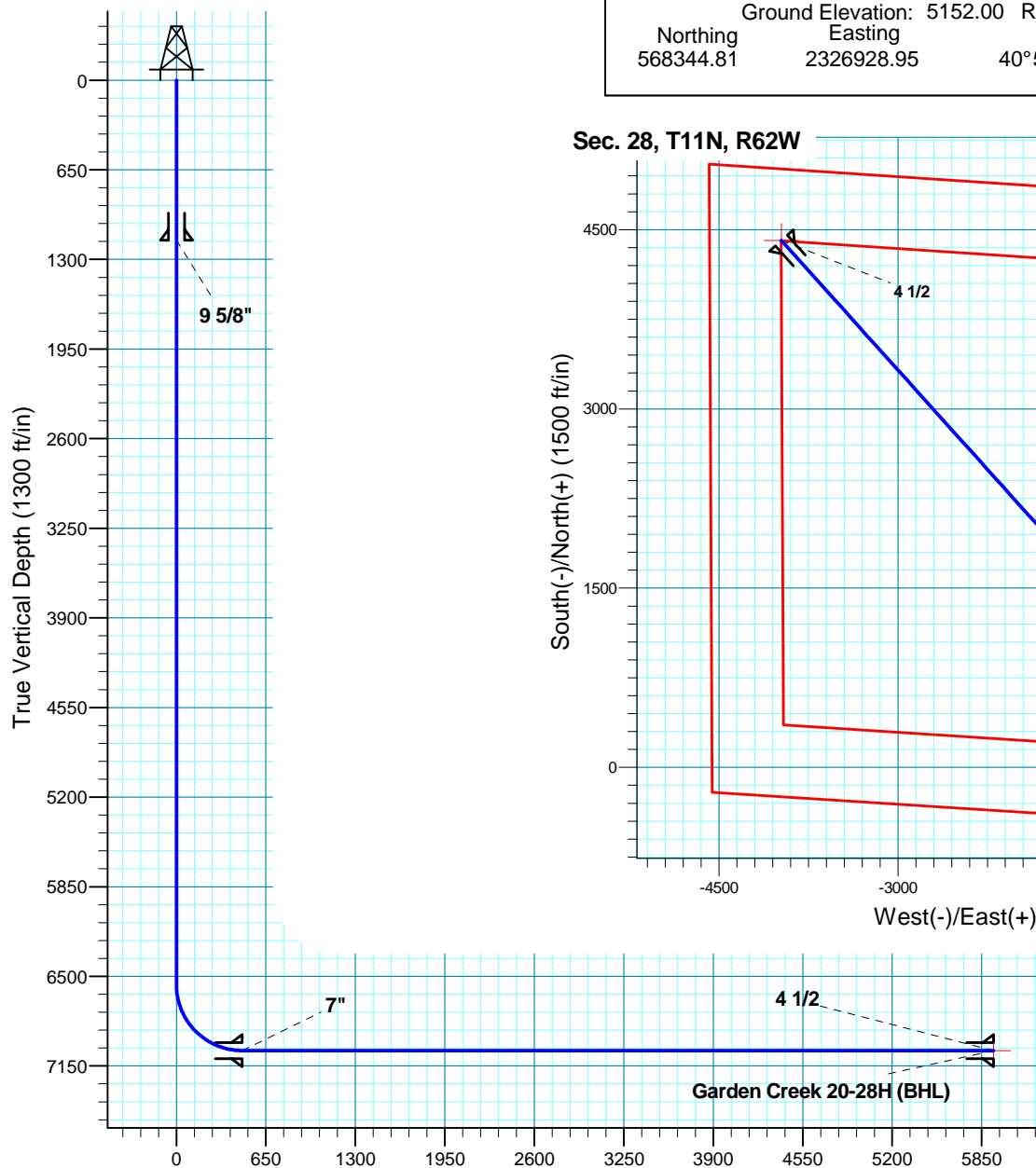
Section 28 T11N R62W

Weld County, CO



Surface Location

NAD 1927 (NADCON CONUS) Colorado North 501
Ground Elevation: 5152.00 Rig @ 5177.00ft (TBD)
Northing 568344.81 Easting 2326928.95 Latitude 40°53' 15.083 N Longitude 104°19' 3.522 W



T M
Azimuths to True North
Magnetic North: 8.76°
Magnetic Field
Strength: 53553.6snT
Dip Angle: 67.56°
Date: 6/17/2010
Model: IGRF200510

Project: DJ - Hereford Ranch
Site: Garden Creek 20-28H
Well: Garden Creek 20-28H
Plan: APD Directional Plan

SECTION DETAILS

Sec	MD	Inc	Azi	TVD	+N/-S	+E/-W	DLeg	TFace	VSec	Target
1	0.00	0.00	0.00	0.00	0.00	0.00	0.00	0.00	0.00	
2	6560.53	0.00	0.00	6560.53	0.00	0.00	0.00	0.00	0.00	
3	7310.54	90.00	317.95	7038.00	354.56	-319.79	12.00	317.95	477.47	
4	12768.89	90.00	317.95	7038.00	4407.80	-3975.58	0.00	0.00	5935.82	Garden Creek 20-28H (BHL)

TARGET DETAILS

Name	TVD	+N/-S	+E/-W	Northing	Easting	Latitude	Longitude	Shape
Garden Creek 20-28H (BHL)	7038.00	4407.80	-3975.58	572699.20	2322894.97	40°53' 58.632 N	104°19' 55.290 W	Poi nt