

T11N, R62W, 6th P.M.

EOG RESOURCES, INC.

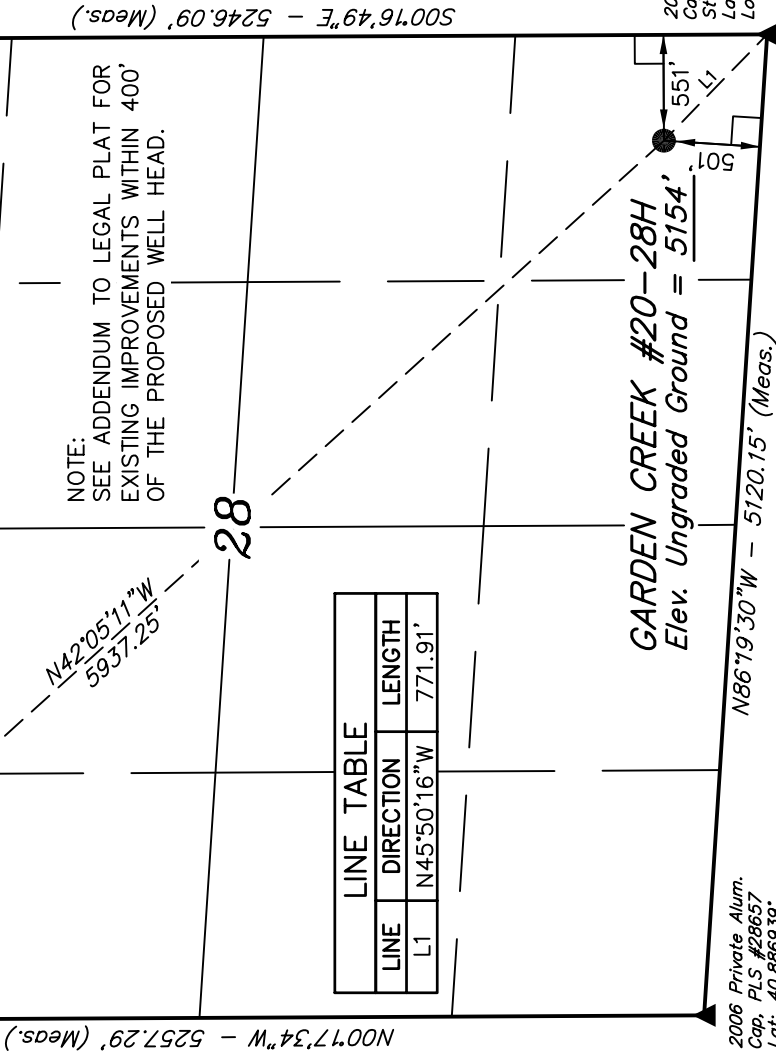
Well location, GARDEN CREEK #20-28H, located as shown in the SE 1/4 SE 1/4 of Section 28, T11N, R62W, 6th P.M., Weld County, Colorado.

BASIS OF ELEVATION

SPOT ELEVATION AT THE NORTHEAST CORNER OF SECTION 1, T11N, R63W, 6th P.M., TAKEN FROM THE HEREFORD QUADRANGLE, COLORADO, WELD COUNTY, 7.5 MINUTE QUAD. (TOPOGRAPHIC MAP) PUBLISHED BY THE UNITED STATES DEPARTMENT OF THE INTERIOR, GEOLOGICAL SURVEY. SAID ELEVATION IS MARKED AS BEING 5352 FEET.

BASIS OF BEARINGS

BASIS OF BEARINGS IS A G.P.S. OBSERVATION.



1000'
500'
0'
500'
1000'

SCALE

CERTIFICATE

THIS IS TO CERTIFY THAT THE ABOVE PLAT WAS PREPARED FROM FIELD NOTES OF ACTUAL SURVEYS MADE BY ME OR UNDER MY SUPERVISION AND THAT THE SAME ARE TRUE AND CORRECT TO THE BEST OF MY KNOWLEDGE AND BELIEF.

REGISTERED LAND SURVEYOR
REGISTRATION NO. 17492
STATE OF COLORADO

UNTAEH ENGINEERING & LAND SURVEYING

85 SOUTH 200 EAST - VERNAL, UTAH 84078

(435) 789-1017

| | | |
|----------------|----------------|---------------------|
| SCALE | DATE SURVEYED: | DATE DRAWN: |
| 1" = 1000' | 05-11-10 | 05-21-10 |
| PARTY | REFERENCES | |
| R.P. K.D. Z.L. | G.L.O. PLAT | |
| WEATHER | FILE | |
| WARM | | EOG RESOURCES, INC. |

LEGEND:

- 90° SYMBOL
- PROPOSED WELL HEAD.
- SECTION CORNERS LOCATED.

| PDOP = 2.3 | |
|--|--|
| NAD 83 (BOTTOM HOLE LOCATION) | NAD 83 (SURFACE LOCATION) |
| LATITUDE = 40°53'58.57" (40.899603) | LATITUDE = 40°53'15.02" (40.887507) |
| LONGITUDE = 104°19'57.12" (104.332534) | LONGITUDE = 104°19'05.35" (104.318153) |
| NAD 27 (BOTTOM HOLE LOCATION) | NAD 27 (SURFACE LOCATION) |
| LATITUDE = 40°53'58.63" (40.899620) | LATITUDE = 40°53'15.08" (40.887523) |
| LONGITUDE = 104°19'55.29" (104.332025) | LONGITUDE = 104°19'03.52" (104.317645) |
| STATE PLANE NAD 83 (COLORADO NORTH) | STATE PLANE NAD 83 (COLORADO NORTH) |
| BOTTOM HOLE LOCATION | SURFACE LOCATION |
| N: 1572701.180 E: 3322745.659 | N: 1568346.844 E: 3326779.778 |
| STATE PLANE NAD 27 (COLORADO NORTH) | STATE PLANE NAD 27 (COLORADO NORTH) |
| BOTTOM HOLE LOCATION | SURFACE LOCATION |
| N: 572699.208 E: 2322894.872 | N: 568344.932 E: 2326928.934 |