

# ENSIGN

## Directional

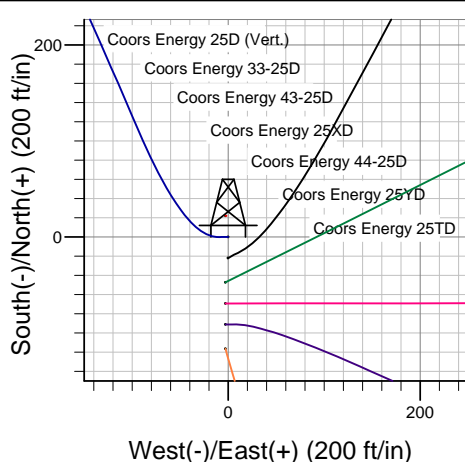
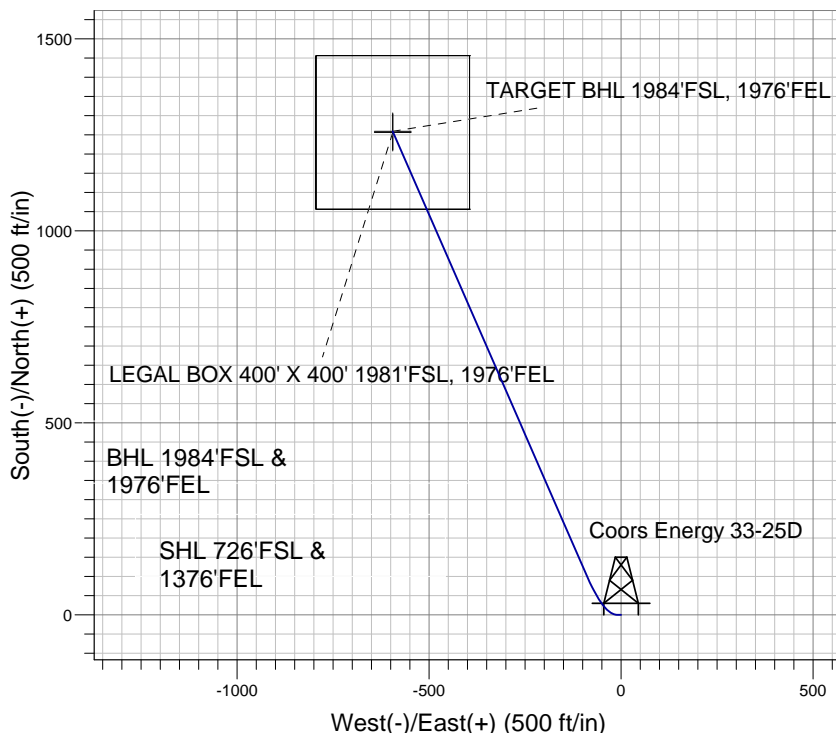
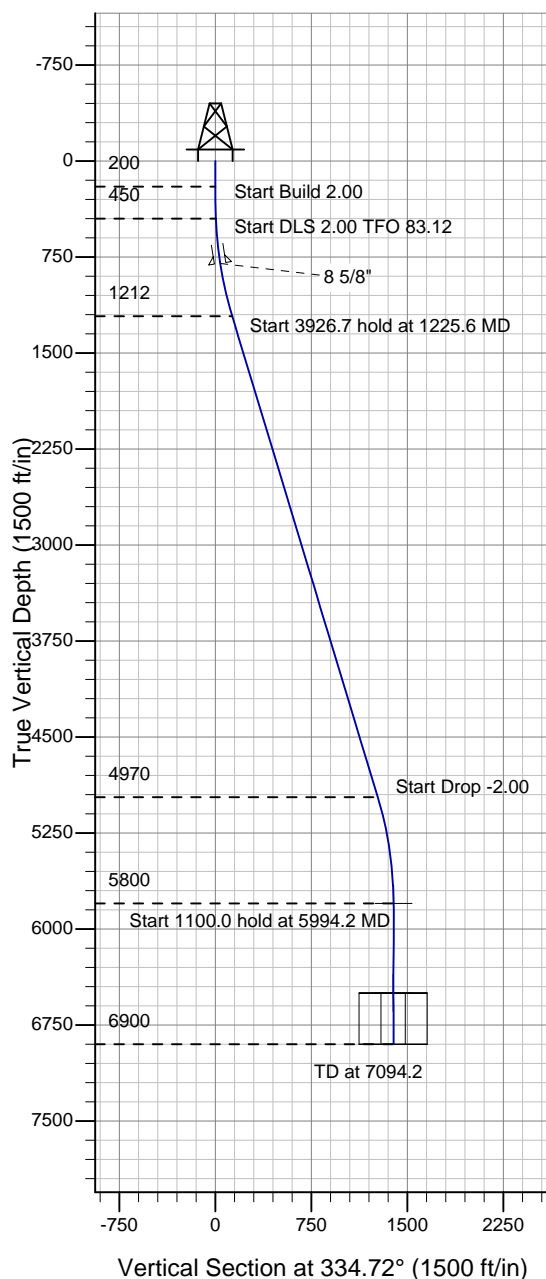
### Well Name: Coors Energy 33-25D

Surface Location: Coors Energy 33-25D Pad Sec.25-T3N-R64W  
North American Datum 1983 , US State Plane 1983 , Colorado Northern Zone

Ground Elevation: 4790.0

+N/-S	+E/-W	Northing	Easting	Latitude	Longitude	Slot
0.0	0.0	1314068.68	3280680.96	40° 11' 28.140 N	104° 29' 43.008 W	
Original Well Elev WELL @ 4803.0ft (Original Well Elev)						

### PETROLEUM DEVELOPMENT CORP Weld County CO



Coors Energy 33-25D  
Plan #1 (6-2-10)  
15:02, June 02 2010



Azimuths to True North  
Magnetic North: 8.84°  
Magnetic Field  
Strength: 53160.5nT  
Dip Angle: 66.96°  
Date: 6/2/2010  
Model: IGRF2010

#### WELLBORE TARGET DETAILS (LAT/LONG)

Name	TVD	+N/-S	+E/-W	Latitude	Longitude	Shape
TARGET BHL 1984'FSL, 1976'FEL	5800.0	1258.7	-594.4	40° 11' 40.578 N	104° 29' 50.668 W	Point
LEGAL BOX 400' X 400' 1981'FSL, 1976'FEL	6500.0	1255.7	-594.4	40° 11' 40.549 N	104° 29' 50.668 W	Rectangle (Sides: L400.0 W400.0)

#### SECTION DETAILS

Sec	MD	Inc	Azi	TVD	+N/-S	+E/-W	DLeg	TFace	VSec	Target
1	0.0	0.00	0.00	0.0	0.0	0.0	0.00	0.00	0.0	
2	200.0	0.00	0.00	200.0	0.0	0.0	0.00	0.00	0.0	
3	450.0	5.00	270.00	449.7	0.0	-10.9	2.00	270.00	4.7	
4	1225.6	16.84	336.41	1211.8	103.6	-90.1	2.00	83.12	132.2	
5	5152.2	16.84	336.41	4970.1	1146.1	-545.3	0.00	0.00	1269.2	
6	5994.2	0.00	0.00	5800.0	1258.7	-594.4	2.00	180.00	1392.0	TARGET BHL 1984'FSL, 1976'FEL
7	7094.2	0.00	0.00	6900.0	1258.7	-594.4	0.00	0.00	1392.0	