

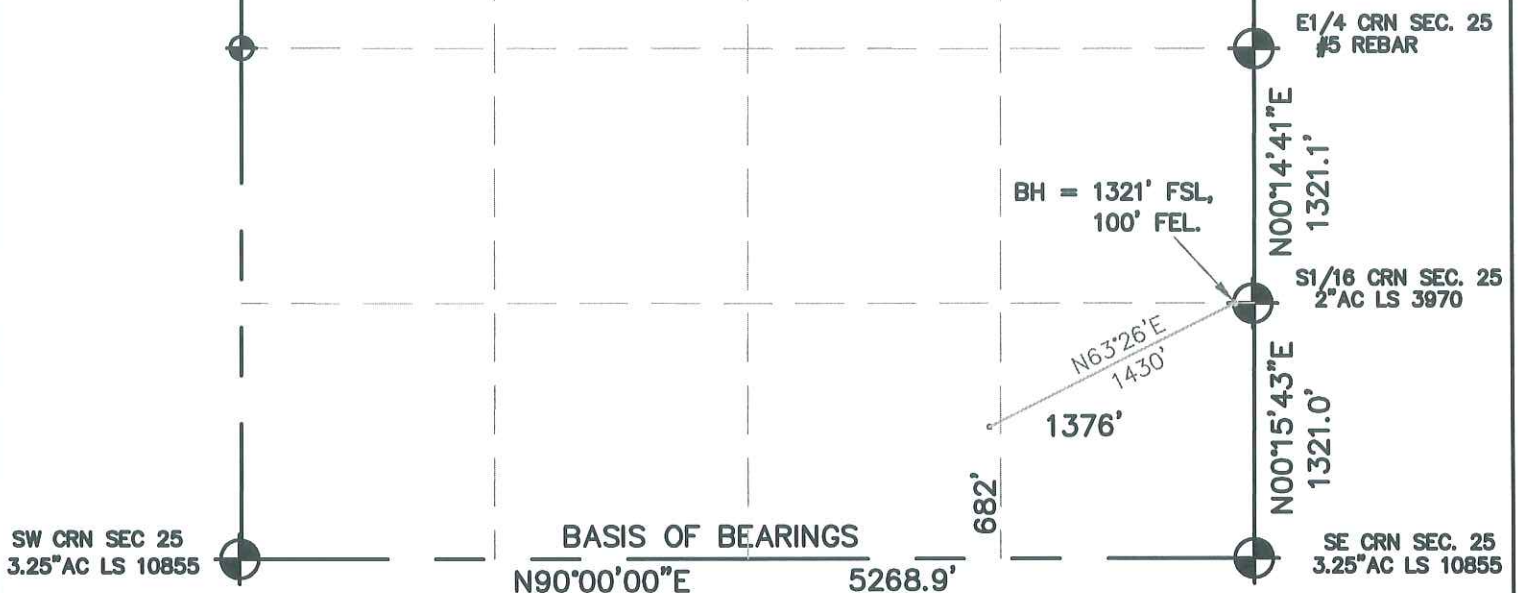
WELL LOCATION CERTIFICATE

SECTION 25, TOWNSHIP 3 NORTH, RANGE 64 WEST, 6TH P.M.

NOTES:

WELL FALLS IN AN OPEN FIELD.
THIS IS A DIRECTIONAL DRILL WELL.
BOTTOM HOLE IS AT 1321' FSL, 100' FEL.
SEE LOCATION DRAWING FOR IMPROVEMENTS.

GROUND ELEVATION = 4790'
LAT. & LONG. = N 40.19102°
W 104.49529°

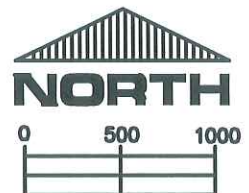


I HEREBY STATE TO PETROLEUM DEVELOPMENT CORP. THAT THIS WELL LOCATION CERTIFICATE FOR THE WELL COORS ENERGY 25XD IS LOCATED 682' FSL & 1376' FEL, SEC. 25, T3N, R64W, 6PM.



LEGEND

- = FOUND MONUMENT
- = PROPOSED WELL
- = BOTTOM HOLE



SCALE 1" = 1000'

ELEVATION SOURCE = USGS 7.5' QUAD.MAP CONTOURS
NGVD 1929 DATUM.

LAT. & LONG. ARE DIFFERENTIALLY CORRECTED (NAD'83)
USING (DGPS) WITH (PDOP) VALUES LESS THAN SIX (6).

THOMAS G. CARLSON, PLS 24657
HORSESHOE SURVEYING, LLC

SHOWN DISTANCES ARE FIELD MEASURED - EXTERIOR SECTION LINES
ARE DRAWN TO SCALE (BEST APPROX. OR FOUND MONUMENT).

THIS IS NOT A MONUMENTED BOUNDARY SURVEY, IT IS ONLY A
DRAWING INTENDED TO DEPICT THE WELL LOCATION TO SECTION LINES.

DISTANCES TO WELL SHOWN PERPENDICULAR
TO SECTION LINES.

PREPARED BY: HORSESHOE SURVEYING, LLC PO BOX 150458 LAKEWOOD, CO 80215 (720)872-0196		WELL NAME: COORS ENERGY 25XD	
DRAWING DATE: 2-17-10		LOCATION: WELD COUNTY, CO SE1/4, SEC. 25, T3N, R64W, 6TH P.M.	
FIELD DATE: 2-17-10	BY: TGC	CHKD:	JOB NO. SHEET NO. 1 OF 1