

LEGEND:

PROPOSED LOCATION

Encana OIL & GAS (USA) INC.

CB FED. DH08-29 & DH03-21 (A28 6100)

SECTION 28, T6S, R100W, 6th P.M.

NE 1/4 NE 1/4

SHEET 8 OF 12



Uintah Engineering & Land Surveying
85 South 200 East Vernal, Utah 84078
(435) 789-1017 * FAX (435) 789-1813

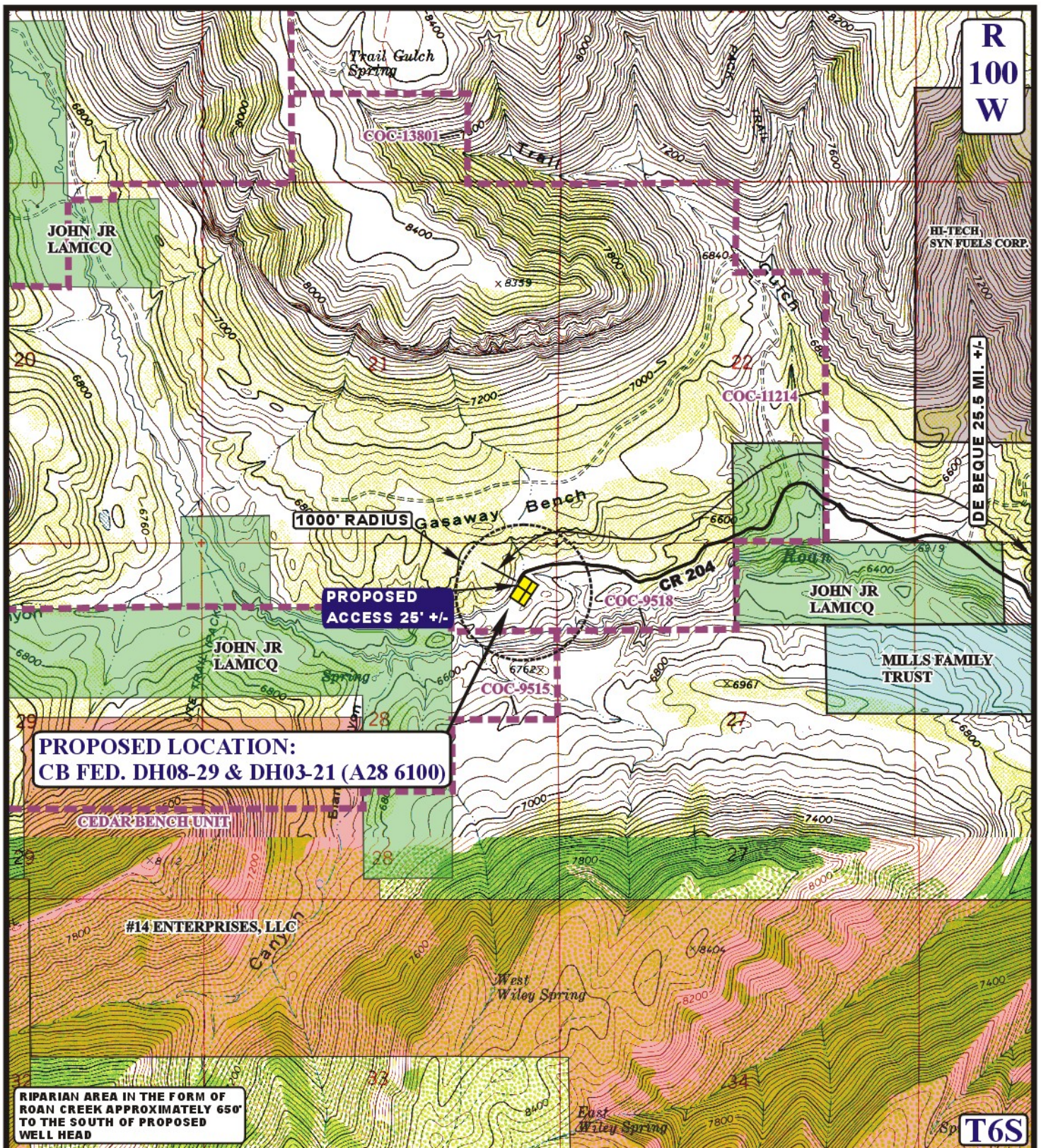


ACCESS ROAD
MAP

3 **11** **10**
MONTH DAY YEAR

SCALE: 1:100,000 DRAWN BY: J.L.G. REVISED: 8-3-10





LEGEND:

EXISTING ROAD

Encana OIL & GAS (USA) INC.

CB FED. DH08-29 & DH03-21 (A28 6100)

SECTION 28, T6S, R100W, 6th P.M.

NE 1/4 NE 1/4

SHEET 9 OF 12



Uintah Engineering & Land Surveying
 85 South 200 East Vernal, Utah 84078
 (435) 789-1017 * FAX (435) 789-1813



ACCESS ROAD
MAP

3 **11** **10**
 MONTH DAY YEAR

SCALE: 1" = 2000' DRAWN BY: J.L.G. REVISED: 8-3-10

B
 TOPO

Encana OIL & GAS (USA) INC.
CB FED. DH08-29 & DH03-21 (A28 6100)
SECTION 28, T6S, R100W, 6th P.M.

PROCEED IN A NORTHWESTERLY, THEN WESTERLY DIRECTION FROM DE BEQUE, COLORADO ALONG THE COUNTY ROAD 204 APPROXIMATELY 25.5 MILES TO THE BEGINNING OF THE PROPOSED ACCESS ROAD TO THE SOUTHEAST; FOLLOW ROAD FLAGS IN A SOUTHEASTERLY DIRECTION APPROXIMATELY 25' TO THE PROPOSED LOCATION.

TOTAL DISTANCE FROM DE BEQUE, COLORADO TO THE PROPOSED WELL LOCATION IS APPROXIMATELY 25.5 MILES.