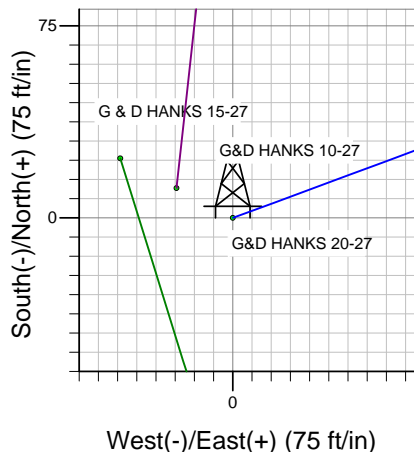
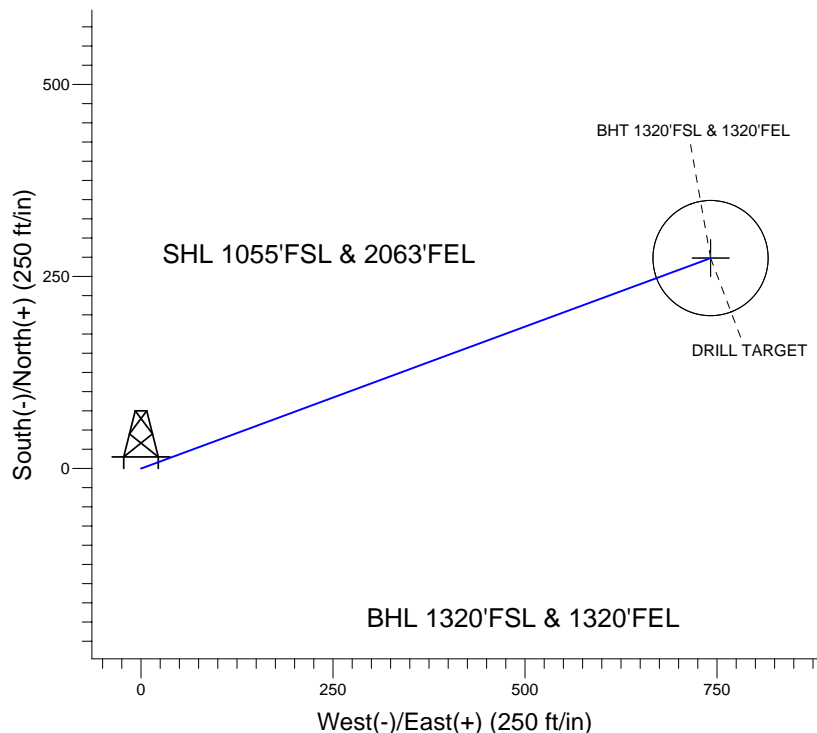
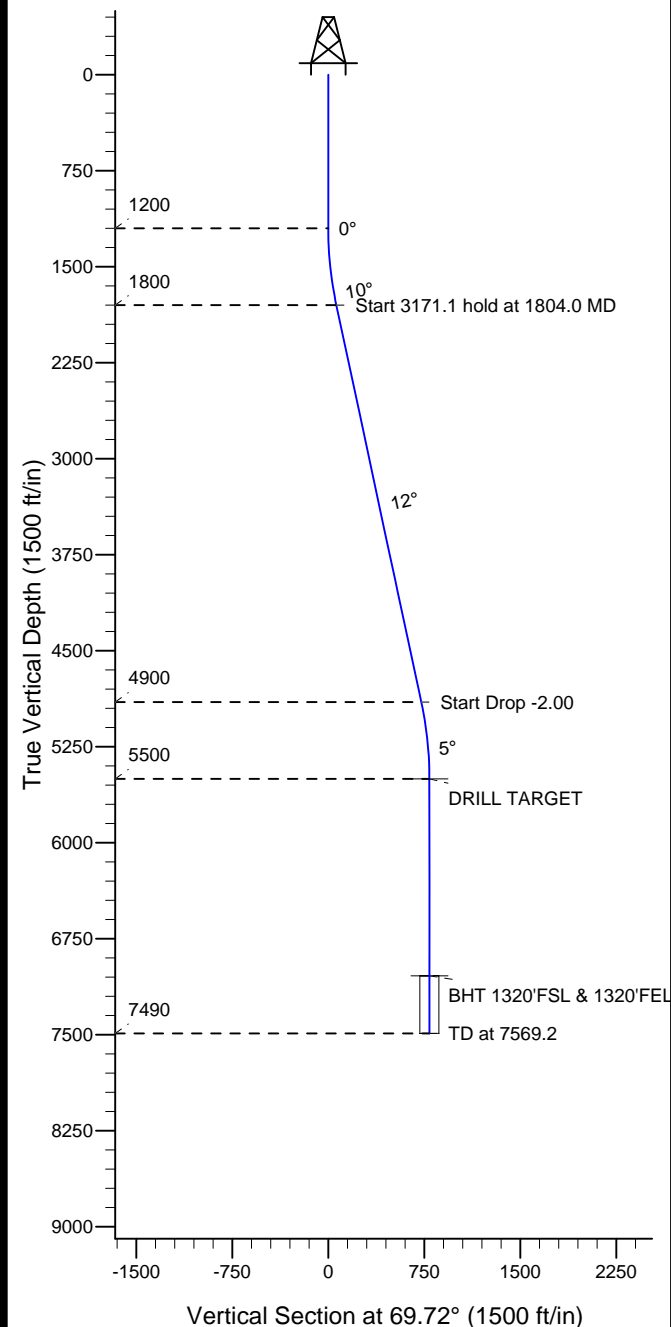


# ENSIGN

## Directional

Well Name: G&D HANKS 20-27  
 Surface Location: G & D HANKS PAD  
 North American Datum 1983 , US State Plane 1983 , Colorado Northern Zone  
 Ground Elevation: 4880.0  
 +N/-S +E/-W Northing Easting Latitude Longitude Slot  
 0.0 0.0 1440999.38 3205217.63 40.541598 -104.761609  
 EST RKB 13' RKB @ 4893.0ft (EST RKB 13')

### BAYSWATER EXPLORATION & PRODUCTION



G&D HANKS 20-27  
 PLAN 1 JUNE 16 2010  
 13:44, June 16 2010



Azimuths to True North  
 Magnetic North: 9.01°  
 Magnetic Field  
 Strength: 53310.8snT  
 Dip Angle: 67.20°  
 Date: 6/16/2010  
 Model: IGRF2010

#### WELLBORE TARGET DETAILS (LAT/LONG)

Name	TVD	+N/-S	+E/-W	Latitude	Longitude	Shape
DRILL TARGET	5500.0	274.0	741.5	40.542350	-104.758941	Point
BHT 1320'FSL & 1320'FEL	7040.0	274.0	741.5	40.542350	-104.758941	Circle (Radius: 75.0)

#### SECTION DETAILS

Sec	MD	Inc	Azi	TVD	+N/-S	+E/-W	DLeg	TFace	VSec	Target
1	0.0	0.00	0.00	0.0	0.0	0.0	0.00	0.00	0.0	
2	1200.0	0.00	0.00	1200.0	0.0	0.0	0.00	0.00	0.0	
3	1804.0	12.08	69.72	1799.5	22.0	59.5	2.00	69.72	63.4	
4	4975.1	12.08	69.72	4900.5	252.0	682.0	0.00	0.00	727.1	
5	5579.2	0.00	0.00	5500.0	274.0	741.5	2.00	180.00	790.5	DRILL TARGET
6	7569.2	0.00	0.00	7490.0	274.0	741.5	0.00	0.00	790.5	



# **BAYSWATER EXPLORATION & PRODUCTION**

**SEC.27-T7N-R66W  
G & D HANKS PAD  
G&D HANKS 20-27**

**Wellbore #1**

**Plan: PLAN 1 JUNE 16 2010**

## **Standard Planning Report**

**16 June, 2010**

<b>Database:</b>	Landmark	<b>Local Co-ordinate Reference:</b>	Well G&D HANKS 20-27
<b>Company:</b>	BAYSWATER EXPLORATION & PRODUCTION	<b>TVD Reference:</b>	RKB @ 4893.0ft (EST RKB 13')
<b>Project:</b>	SEC.27-T7N-R66W	<b>MD Reference:</b>	RKB @ 4893.0ft (EST RKB 13')
<b>Site:</b>	G & D HANKS PAD	<b>North Reference:</b>	True
<b>Well:</b>	G&D HANKS 20-27	<b>Survey Calculation Method:</b>	Minimum Curvature
<b>Wellbore:</b>	Wellbore #1		
<b>Design:</b>	PLAN 1 JUNE 16 2010		

<b>Project</b>	SEC.27-T7N-R66W		
<b>Map System:</b>	US State Plane 1983	<b>System Datum:</b>	Mean Sea Level
<b>Geo Datum:</b>	North American Datum 1983		Using Well Reference Point
<b>Map Zone:</b>	Colorado Northern Zone		Using geodetic scale factor

Site		G & D HANKS PAD				
Site Position:		Northing:	1,440,999.38ft	Latitude:	40.541598	
From:	Lat/Long	Easting:	3,205,217.63ft	Longitude:	-104.761609	
Position Uncertainty:		0.0 ft	Slot Radius:	"	Grid Convergence:	0.48 °

Well	G&D HANKS 20-27					
Well Position	+N-S	0.0 ft	Northing:	1,440,999.38 ft	Latitude:	40.541598
	+E-W	0.0 ft	Easting:	3,205,217.63 ft	Longitude:	-104.761609
Position Uncertainty		0.0 ft	Wellhead Elevation:	ft	Ground Level:	4,880.0 ft

<b>Wellbore</b>	Wellbore #1				
<b>Magnetics</b>	<b>Model Name</b>	<b>Sample Date</b>	<b>Declination (°)</b>	<b>Dip Angle (°)</b>	<b>Field Strength (nT)</b>
	IGRF2010	6/16/2010	9.01	67.20	53,311

<b>Design</b>	PLAN 1 JUNE 16 2010			
<b>Audit Notes:</b>				
<b>Version:</b>	<b>Phase:</b>	PROTOTYPE	<b>Tie On Depth:</b>	0.0
<b>Vertical Section:</b>	<b>Depth From (TVD) (ft)</b>	<b>+N/-S (ft)</b>	<b>+E/-W (ft)</b>	<b>Direction (°)</b>
	0.0	0.0	0.0	69.72

<b>Plan Sections</b>										
Measured Depth (ft)	Inclination (°)	Azimuth (°)	Vertical Depth (ft)	+N/-S (ft)	+E/-W (ft)	Dogleg Rate (°/100ft)	Build Rate (°/100ft)	Turn Rate (°/100ft)	TFO (°)	Target
0.0	0.00	0.00	0.0	0.0	0.0	0.00	0.00	0.00	0.00	
1,200.0	0.00	0.00	1,200.0	0.0	0.0	0.00	0.00	0.00	0.00	
1,804.0	12.08	69.72	1,799.5	22.0	59.5	2.00	2.00	0.00	69.72	
4,975.1	12.08	69.72	4,900.5	252.0	682.0	0.00	0.00	0.00	0.00	
5,579.2	0.00	0.00	5,500.0	274.0	741.5	2.00	-2.00	0.00	180.00	DRILL TARGET
7,569.2	0.00	0.00	7,490.0	274.0	741.5	0.00	0.00	0.00	0.00	

<b>Database:</b>	Landmark	<b>Local Co-ordinate Reference:</b>	Well G&D HANKS 20-27
<b>Company:</b>	BAYSWATER EXPLORATION & PRODUCTION	<b>TVD Reference:</b>	RKB @ 4893.0ft (EST RKB 13')
<b>Project:</b>	SEC.27-T7N-R66W	<b>MD Reference:</b>	RKB @ 4893.0ft (EST RKB 13')
<b>Site:</b>	G & D HANKS PAD	<b>North Reference:</b>	True
<b>Well:</b>	G&D HANKS 20-27	<b>Survey Calculation Method:</b>	Minimum Curvature
<b>Wellbore:</b>	Wellbore #1		
<b>Design:</b>	PLAN 1 JUNE 16 2010		

Planned Survey									
Measured Depth (ft)	Inclination (°)	Azimuth (°)	Vertical Depth (ft)	+N/-S (ft)	+E/-W (ft)	Vertical Section (ft)	Dogleg Rate (°/100ft)	Build Rate (°/100ft)	Turn Rate (°/100ft)
0.0	0.00	0.00	0.0	0.0	0.0	0.0	0.00	0.00	0.00
50.0	0.00	0.00	50.0	0.0	0.0	0.0	0.00	0.00	0.00
100.0	0.00	0.00	100.0	0.0	0.0	0.0	0.00	0.00	0.00
150.0	0.00	0.00	150.0	0.0	0.0	0.0	0.00	0.00	0.00
200.0	0.00	0.00	200.0	0.0	0.0	0.0	0.00	0.00	0.00
250.0	0.00	0.00	250.0	0.0	0.0	0.0	0.00	0.00	0.00
300.0	0.00	0.00	300.0	0.0	0.0	0.0	0.00	0.00	0.00
350.0	0.00	0.00	350.0	0.0	0.0	0.0	0.00	0.00	0.00
400.0	0.00	0.00	400.0	0.0	0.0	0.0	0.00	0.00	0.00
450.0	0.00	0.00	450.0	0.0	0.0	0.0	0.00	0.00	0.00
500.0	0.00	0.00	500.0	0.0	0.0	0.0	0.00	0.00	0.00
550.0	0.00	0.00	550.0	0.0	0.0	0.0	0.00	0.00	0.00
600.0	0.00	0.00	600.0	0.0	0.0	0.0	0.00	0.00	0.00
650.0	0.00	0.00	650.0	0.0	0.0	0.0	0.00	0.00	0.00
700.0	0.00	0.00	700.0	0.0	0.0	0.0	0.00	0.00	0.00
750.0	0.00	0.00	750.0	0.0	0.0	0.0	0.00	0.00	0.00
800.0	0.00	0.00	800.0	0.0	0.0	0.0	0.00	0.00	0.00
850.0	0.00	0.00	850.0	0.0	0.0	0.0	0.00	0.00	0.00
900.0	0.00	0.00	900.0	0.0	0.0	0.0	0.00	0.00	0.00
950.0	0.00	0.00	950.0	0.0	0.0	0.0	0.00	0.00	0.00
1,000.0	0.00	0.00	1,000.0	0.0	0.0	0.0	0.00	0.00	0.00
1,050.0	0.00	0.00	1,050.0	0.0	0.0	0.0	0.00	0.00	0.00
1,100.0	0.00	0.00	1,100.0	0.0	0.0	0.0	0.00	0.00	0.00
1,150.0	0.00	0.00	1,150.0	0.0	0.0	0.0	0.00	0.00	0.00
1,200.0	0.00	0.00	1,200.0	0.0	0.0	0.0	0.00	0.00	0.00
1,250.0	1.00	69.72	1,250.0	0.2	0.4	0.4	2.00	2.00	0.00
1,300.0	2.00	69.72	1,300.0	0.6	1.6	1.7	2.00	2.00	0.00
1,350.0	3.00	69.72	1,349.9	1.4	3.7	3.9	2.00	2.00	0.00
1,400.0	4.00	69.72	1,399.8	2.4	6.5	7.0	2.00	2.00	0.00
1,450.0	5.00	69.72	1,449.7	3.8	10.2	10.9	2.00	2.00	0.00
1,500.0	6.00	69.72	1,499.5	5.4	14.7	15.7	2.00	2.00	0.00
1,550.0	7.00	69.72	1,549.1	7.4	20.0	21.4	2.00	2.00	0.00
1,600.0	8.00	69.72	1,598.7	9.7	26.2	27.9	2.00	2.00	0.00
1,650.0	9.00	69.72	1,648.2	12.2	33.1	35.3	2.00	2.00	0.00
1,700.0	10.00	69.72	1,697.5	15.1	40.8	43.5	2.00	2.00	0.00
1,750.0	11.00	69.72	1,746.6	18.2	49.4	52.6	2.00	2.00	0.00
1,800.0	12.00	69.72	1,795.6	21.7	58.7	62.6	2.00	2.00	0.00
1,804.0	12.08	69.72	1,799.5	22.0	59.5	63.4	2.00	2.00	0.00
1,850.0	12.08	69.72	1,844.5	25.3	68.5	73.1	0.00	0.00	0.00
1,900.0	12.08	69.72	1,893.4	28.9	78.4	83.5	0.00	0.00	0.00
1,950.0	12.08	69.72	1,942.3	32.6	88.2	94.0	0.00	0.00	0.00
2,000.0	12.08	69.72	1,991.2	36.2	98.0	104.5	0.00	0.00	0.00
2,050.0	12.08	69.72	2,040.1	39.8	107.8	114.9	0.00	0.00	0.00
2,100.0	12.08	69.72	2,089.0	43.5	117.6	125.4	0.00	0.00	0.00
2,150.0	12.08	69.72	2,137.9	47.1	127.4	135.8	0.00	0.00	0.00
2,200.0	12.08	69.72	2,186.8	50.7	137.2	146.3	0.00	0.00	0.00
2,250.0	12.08	69.72	2,235.7	54.3	147.1	156.8	0.00	0.00	0.00
2,300.0	12.08	69.72	2,284.6	58.0	156.9	167.2	0.00	0.00	0.00
2,350.0	12.08	69.72	2,333.4	61.6	166.7	177.7	0.00	0.00	0.00
2,400.0	12.08	69.72	2,382.3	65.2	176.5	188.2	0.00	0.00	0.00
2,450.0	12.08	69.72	2,431.2	68.8	186.3	198.6	0.00	0.00	0.00
2,500.0	12.08	69.72	2,480.1	72.5	196.1	209.1	0.00	0.00	0.00
2,550.0	12.08	69.72	2,529.0	76.1	206.0	219.6	0.00	0.00	0.00

<b>Database:</b>	Landmark	<b>Local Co-ordinate Reference:</b>	Well G&D HANKS 20-27
<b>Company:</b>	BAYSWATER EXPLORATION & PRODUCTION	<b>TVD Reference:</b>	RKB @ 4893.0ft (EST RKB 13')
<b>Project:</b>	SEC.27-T7N-R66W	<b>MD Reference:</b>	RKB @ 4893.0ft (EST RKB 13')
<b>Site:</b>	G & D HANKS PAD	<b>North Reference:</b>	True
<b>Well:</b>	G&D HANKS 20-27	<b>Survey Calculation Method:</b>	Minimum Curvature
<b>Wellbore:</b>	Wellbore #1		
<b>Design:</b>	PLAN 1 JUNE 16 2010		

Planned Survey									
Measured Depth (ft)	Inclination (°)	Azimuth (°)	Vertical Depth (ft)	+N/-S (ft)	+E/-W (ft)	Vertical Section (ft)	Dogleg Rate (°/100ft)	Build Rate (°/100ft)	Turn Rate (°/100ft)
2,600.0	12.08	69.72	2,577.9	79.7	215.8	230.0	0.00	0.00	0.00
2,650.0	12.08	69.72	2,626.8	83.3	225.6	240.5	0.00	0.00	0.00
2,700.0	12.08	69.72	2,675.7	87.0	235.4	250.9	0.00	0.00	0.00
2,750.0	12.08	69.72	2,724.6	90.6	245.2	261.4	0.00	0.00	0.00
2,800.0	12.08	69.72	2,773.5	94.2	255.0	271.9	0.00	0.00	0.00
2,850.0	12.08	69.72	2,822.4	97.9	264.8	282.3	0.00	0.00	0.00
2,900.0	12.08	69.72	2,871.3	101.5	274.7	292.8	0.00	0.00	0.00
2,950.0	12.08	69.72	2,920.2	105.1	284.5	303.3	0.00	0.00	0.00
3,000.0	12.08	69.72	2,969.1	108.7	294.3	313.7	0.00	0.00	0.00
3,050.0	12.08	69.72	3,017.9	112.4	304.1	324.2	0.00	0.00	0.00
3,100.0	12.08	69.72	3,066.8	116.0	313.9	334.7	0.00	0.00	0.00
3,150.0	12.08	69.72	3,115.7	119.6	323.7	345.1	0.00	0.00	0.00
3,200.0	12.08	69.72	3,164.6	123.2	333.5	355.6	0.00	0.00	0.00
3,250.0	12.08	69.72	3,213.5	126.9	343.4	366.1	0.00	0.00	0.00
3,300.0	12.08	69.72	3,262.4	130.5	353.2	376.5	0.00	0.00	0.00
3,350.0	12.08	69.72	3,311.3	134.1	363.0	387.0	0.00	0.00	0.00
3,400.0	12.08	69.72	3,360.2	137.7	372.8	397.4	0.00	0.00	0.00
3,450.0	12.08	69.72	3,409.1	141.4	382.6	407.9	0.00	0.00	0.00
3,500.0	12.08	69.72	3,458.0	145.0	392.4	418.4	0.00	0.00	0.00
3,550.0	12.08	69.72	3,506.9	148.6	402.3	428.8	0.00	0.00	0.00
3,600.0	12.08	69.72	3,555.8	152.3	412.1	439.3	0.00	0.00	0.00
3,650.0	12.08	69.72	3,604.7	155.9	421.9	449.8	0.00	0.00	0.00
3,700.0	12.08	69.72	3,653.6	159.5	431.7	460.2	0.00	0.00	0.00
3,750.0	12.08	69.72	3,702.4	163.1	441.5	470.7	0.00	0.00	0.00
3,800.0	12.08	69.72	3,751.3	166.8	451.3	481.2	0.00	0.00	0.00
3,850.0	12.08	69.72	3,800.2	170.4	461.1	491.6	0.00	0.00	0.00
3,900.0	12.08	69.72	3,849.1	174.0	471.0	502.1	0.00	0.00	0.00
3,950.0	12.08	69.72	3,898.0	177.6	480.8	512.5	0.00	0.00	0.00
4,000.0	12.08	69.72	3,946.9	181.3	490.6	523.0	0.00	0.00	0.00
4,050.0	12.08	69.72	3,995.8	184.9	500.4	533.5	0.00	0.00	0.00
4,100.0	12.08	69.72	4,044.7	188.5	510.2	543.9	0.00	0.00	0.00
4,150.0	12.08	69.72	4,093.6	192.1	520.0	554.4	0.00	0.00	0.00
4,200.0	12.08	69.72	4,142.5	195.8	529.9	564.9	0.00	0.00	0.00
4,250.0	12.08	69.72	4,191.4	199.4	539.7	575.3	0.00	0.00	0.00
4,300.0	12.08	69.72	4,240.3	203.0	549.5	585.8	0.00	0.00	0.00
4,350.0	12.08	69.72	4,289.2	206.7	559.3	596.3	0.00	0.00	0.00
4,400.0	12.08	69.72	4,338.0	210.3	569.1	606.7	0.00	0.00	0.00
4,450.0	12.08	69.72	4,386.9	213.9	578.9	617.2	0.00	0.00	0.00
4,500.0	12.08	69.72	4,435.8	217.5	588.7	627.7	0.00	0.00	0.00
4,550.0	12.08	69.72	4,484.7	221.2	598.6	638.1	0.00	0.00	0.00
4,600.0	12.08	69.72	4,533.6	224.8	608.4	648.6	0.00	0.00	0.00
4,650.0	12.08	69.72	4,582.5	228.4	618.2	659.0	0.00	0.00	0.00
4,700.0	12.08	69.72	4,631.4	232.0	628.0	669.5	0.00	0.00	0.00
4,750.0	12.08	69.72	4,680.3	235.7	637.8	680.0	0.00	0.00	0.00
4,800.0	12.08	69.72	4,729.2	239.3	647.6	690.4	0.00	0.00	0.00
4,850.0	12.08	69.72	4,778.1	242.9	657.5	700.9	0.00	0.00	0.00
4,900.0	12.08	69.72	4,827.0	246.5	667.3	711.4	0.00	0.00	0.00
4,950.0	12.08	69.72	4,875.9	250.2	677.1	721.8	0.00	0.00	0.00
4,975.1	12.08	69.72	4,900.5	252.0	682.0	727.1	0.00	0.00	0.00
5,000.0	11.58	69.72	4,924.8	253.8	686.8	732.2	2.00	-2.00	0.00
5,050.0	10.58	69.72	4,973.9	257.1	695.8	741.8	2.00	-2.00	0.00
5,100.0	9.58	69.72	5,023.1	260.1	704.0	750.5	2.00	-2.00	0.00
5,150.0	8.58	69.72	5,072.5	262.9	711.4	758.4	2.00	-2.00	0.00

<b>Database:</b>	Landmark	<b>Local Co-ordinate Reference:</b>	Well G&D HANKS 20-27
<b>Company:</b>	BAYSWATER EXPLORATION & PRODUCTION	<b>TVD Reference:</b>	RKB @ 4893.0ft (EST RKB 13')
<b>Project:</b>	SEC.27-T7N-R66W	<b>MD Reference:</b>	RKB @ 4893.0ft (EST RKB 13')
<b>Site:</b>	G & D HANKS PAD	<b>North Reference:</b>	True
<b>Well:</b>	G&D HANKS 20-27	<b>Survey Calculation Method:</b>	Minimum Curvature
<b>Wellbore:</b>	Wellbore #1		
<b>Design:</b>	PLAN 1 JUNE 16 2010		

Planned Survey									
Measured Depth (ft)	Inclination (°)	Azimuth (°)	Vertical Depth (ft)	+N/-S (ft)	+E/-W (ft)	Vertical Section (ft)	Dogleg Rate (°/100ft)	Build Rate (°/100ft)	Turn Rate (°/100ft)
5,200.0	7.58	69.72	5,122.0	265.3	718.0	765.5	2.00	-2.00	0.00
5,250.0	6.58	69.72	5,171.6	267.4	723.8	771.6	2.00	-2.00	0.00
5,300.0	5.58	69.72	5,221.3	269.3	728.8	776.9	2.00	-2.00	0.00
5,350.0	4.58	69.72	5,271.1	270.8	732.9	781.4	2.00	-2.00	0.00
5,400.0	3.58	69.72	5,321.0	272.0	736.3	784.9	2.00	-2.00	0.00
5,450.0	2.58	69.72	5,370.9	273.0	738.8	787.6	2.00	-2.00	0.00
5,500.0	1.58	69.72	5,420.9	273.6	740.5	789.4	2.00	-2.00	0.00
5,550.0	0.58	69.72	5,470.8	273.9	741.4	790.4	2.00	-2.00	0.00
5,579.2	0.00	0.00	5,500.0	274.0	741.5	790.5	2.00	-2.00	0.00
DRILL TARGET									
5,600.0	0.00	0.00	5,520.8	274.0	741.5	790.5	0.00	0.00	0.00
5,650.0	0.00	0.00	5,570.8	274.0	741.5	790.5	0.00	0.00	0.00
5,700.0	0.00	0.00	5,620.8	274.0	741.5	790.5	0.00	0.00	0.00
5,750.0	0.00	0.00	5,670.8	274.0	741.5	790.5	0.00	0.00	0.00
5,800.0	0.00	0.00	5,720.8	274.0	741.5	790.5	0.00	0.00	0.00
5,850.0	0.00	0.00	5,770.8	274.0	741.5	790.5	0.00	0.00	0.00
5,900.0	0.00	0.00	5,820.8	274.0	741.5	790.5	0.00	0.00	0.00
5,950.0	0.00	0.00	5,870.8	274.0	741.5	790.5	0.00	0.00	0.00
6,000.0	0.00	0.00	5,920.8	274.0	741.5	790.5	0.00	0.00	0.00
6,050.0	0.00	0.00	5,970.8	274.0	741.5	790.5	0.00	0.00	0.00
6,100.0	0.00	0.00	6,020.8	274.0	741.5	790.5	0.00	0.00	0.00
6,150.0	0.00	0.00	6,070.8	274.0	741.5	790.5	0.00	0.00	0.00
6,200.0	0.00	0.00	6,120.8	274.0	741.5	790.5	0.00	0.00	0.00
6,250.0	0.00	0.00	6,170.8	274.0	741.5	790.5	0.00	0.00	0.00
6,300.0	0.00	0.00	6,220.8	274.0	741.5	790.5	0.00	0.00	0.00
6,350.0	0.00	0.00	6,270.8	274.0	741.5	790.5	0.00	0.00	0.00
6,400.0	0.00	0.00	6,320.8	274.0	741.5	790.5	0.00	0.00	0.00
6,450.0	0.00	0.00	6,370.8	274.0	741.5	790.5	0.00	0.00	0.00
6,500.0	0.00	0.00	6,420.8	274.0	741.5	790.5	0.00	0.00	0.00
6,550.0	0.00	0.00	6,470.8	274.0	741.5	790.5	0.00	0.00	0.00
6,600.0	0.00	0.00	6,520.8	274.0	741.5	790.5	0.00	0.00	0.00
6,650.0	0.00	0.00	6,570.8	274.0	741.5	790.5	0.00	0.00	0.00
6,700.0	0.00	0.00	6,620.8	274.0	741.5	790.5	0.00	0.00	0.00
6,750.0	0.00	0.00	6,670.8	274.0	741.5	790.5	0.00	0.00	0.00
6,800.0	0.00	0.00	6,720.8	274.0	741.5	790.5	0.00	0.00	0.00
6,850.0	0.00	0.00	6,770.8	274.0	741.5	790.5	0.00	0.00	0.00
6,900.0	0.00	0.00	6,820.8	274.0	741.5	790.5	0.00	0.00	0.00
6,950.0	0.00	0.00	6,870.8	274.0	741.5	790.5	0.00	0.00	0.00
7,000.0	0.00	0.00	6,920.8	274.0	741.5	790.5	0.00	0.00	0.00
7,050.0	0.00	0.00	6,970.8	274.0	741.5	790.5	0.00	0.00	0.00
7,100.0	0.00	0.00	7,020.8	274.0	741.5	790.5	0.00	0.00	0.00
7,119.2	0.00	0.00	7,040.0	274.0	741.5	790.5	0.00	0.00	0.00
BHT 1320'FSL & 1320'FEL									
7,150.0	0.00	0.00	7,070.8	274.0	741.5	790.5	0.00	0.00	0.00
7,200.0	0.00	0.00	7,120.8	274.0	741.5	790.5	0.00	0.00	0.00
7,250.0	0.00	0.00	7,170.8	274.0	741.5	790.5	0.00	0.00	0.00
7,300.0	0.00	0.00	7,220.8	274.0	741.5	790.5	0.00	0.00	0.00
7,350.0	0.00	0.00	7,270.8	274.0	741.5	790.5	0.00	0.00	0.00
7,400.0	0.00	0.00	7,320.8	274.0	741.5	790.5	0.00	0.00	0.00
7,450.0	0.00	0.00	7,370.8	274.0	741.5	790.5	0.00	0.00	0.00
7,500.0	0.00	0.00	7,420.8	274.0	741.5	790.5	0.00	0.00	0.00
7,550.0	0.00	0.00	7,470.8	274.0	741.5	790.5	0.00	0.00	0.00
7,569.2	0.00	0.00	7,490.0	274.0	741.5	790.5	0.00	0.00	0.00

<b>Database:</b>	Landmark	<b>Local Co-ordinate Reference:</b>	Well G&D HANKS 20-27
<b>Company:</b>	BAYSWATER EXPLORATION & PRODUCTION	<b>TVD Reference:</b>	RKB @ 4893.0ft (EST RKB 13')
<b>Project:</b>	SEC.27-T7N-R66W	<b>MD Reference:</b>	RKB @ 4893.0ft (EST RKB 13')
<b>Site:</b>	G & D HANKS PAD	<b>North Reference:</b>	True
<b>Well:</b>	G&D HANKS 20-27	<b>Survey Calculation Method:</b>	Minimum Curvature
<b>Wellbore:</b>	Wellbore #1		
<b>Design:</b>	PLAN 1 JUNE 16 2010		

Planned Survey									
Measured Depth (ft)	Inclination (°)	Azimuth (°)	Vertical Depth (ft)	+N/-S (ft)	+E/-W (ft)	Vertical Section (ft)	Dogleg Rate (°/100ft)	Build Rate (°/100ft)	Turn Rate (°/100ft)

Targets									
Target Name - hit/miss target - Shape	Dip Angle (°)	Dip Dir. (°)	TVD (ft)	+N/-S (ft)	+E/-W (ft)	Northing (ft)	Easting (ft)	Latitude	Longitude
DRILL TARGET - plan hits target - Point	0.00	0.00	5,500.0	274.0	741.5	1,441,279.51	3,205,956.83	40.542350	-104.758941
BHT 1320'FSL & 1320' - plan hits target - Circle (radius 75.0)	0.00	0.00	7,040.0	274.0	741.5	1,441,279.51	3,205,956.83	40.542350	-104.758941



# **BAYSWATER EXPLORATION & PRODUCTION**

**SEC.27-T7N-R66W  
G & D HANKS PAD  
G&D HANKS 20-27**

**Wellbore #1  
PLAN 1 JUNE 16 2010**

## **Anticollision Report**

**16 June, 2010**





<b>Company:</b>	BAYSWATER EXPLORATION & PRODUCTION	<b>Local Co-ordinate Reference:</b>	Well G&D HANKS 20-27
<b>Project:</b>	SEC.27-T7N-R66W	<b>TVD Reference:</b>	RKB @ 4893.0ft (EST RKB 13')
<b>Reference Site:</b>	G & D HANKS PAD	<b>MD Reference:</b>	RKB @ 4893.0ft (EST RKB 13')
<b>Site Error:</b>	0.0ft	<b>North Reference:</b>	True
<b>Reference Well:</b>	G&D HANKS 20-27	<b>Survey Calculation Method:</b>	Minimum Curvature
<b>Well Error:</b>	0.0ft	<b>Output errors are at</b>	2.00 sigma
<b>Reference Wellbore</b>	Wellbore #1	<b>Database:</b>	Landmark
<b>Reference Design:</b>	PLAN 1 JUNE 16 2010	<b>Offset TVD Reference:</b>	Offset Datum

<b>Offset Design</b> G & D HANKS PAD - G & D HANKS 15-27 - Wellbore #1 - PLAN 1 JUNE 16 2010												<b>Offset Site Error:</b>	0.0 ft
Survey Program: 0-MWD												<b>Offset Well Error:</b>	0.0 ft
Measured Depth (ft)	Vertical Depth (ft)	Measured Depth (ft)	Vertical Depth (ft)	Reference	Offset	Highside Toolface (°)	Offset Wellbore Centre +N/-S (ft)	+E/-W (ft)	Between Centres (ft)	Between Ellipses (ft)	Minimum Separation (ft)	Separation Factor	Warning
1,050.0	1,050.0	1,050.6	1,050.6	2.2	2.2	-62.41	22.9	-43.8	49.4	44.9	4.48	11.021	
1,100.0	1,100.0	1,101.2	1,101.2	2.4	2.3	-63.53	21.6	-43.4	48.5	43.8	4.69	10.327	
1,150.0	1,150.0	1,151.7	1,151.7	2.5	2.4	-65.50	19.5	-42.7	47.0	42.1	4.90	9.594	
1,200.0	1,200.0	1,202.2	1,202.0	2.6	2.5	-68.46	16.5	-41.8	45.0	39.9	5.10	8.820	
1,250.0	1,250.0	1,252.5	1,252.1	2.7	2.6	-142.75	12.7	-40.6	43.0	37.7	5.30	8.104	
1,300.0	1,300.0	1,302.6	1,302.0	2.8	2.7	-149.40	8.1	-39.2	41.5	36.0	5.50	7.550	
1,333.7	1,333.7	1,336.2	1,335.4	2.9	2.8	-154.94	4.5	-38.1	41.2	35.5	5.64	7.302 CC, ES	
1,350.0	1,349.9	1,352.3	1,351.5	2.9	2.8	-157.73	2.8	-37.5	41.3	35.6	5.71	7.231	
1,400.0	1,399.8	1,401.9	1,400.7	3.0	2.9	-166.31	-2.5	-35.9	42.7	36.8	5.92	7.221 SF	
1,450.0	1,449.7	1,451.4	1,449.9	3.1	3.0	-174.28	-7.8	-34.3	46.0	39.8	6.14	7.490	
1,500.0	1,499.5	1,500.8	1,499.0	3.2	3.2	178.92	-13.1	-32.6	50.8	44.5	6.35	8.001	
1,550.0	1,549.1	1,550.2	1,548.1	3.4	3.3	173.44	-18.3	-31.0	57.1	50.6	6.58	8.690	
1,600.0	1,598.7	1,599.4	1,597.0	3.5	3.4	169.20	-23.6	-29.3	64.7	57.9	6.79	9.528	
1,650.0	1,648.2	1,648.5	1,645.8	3.6	3.5	166.00	-28.9	-27.7	73.4	66.4	7.02	10.461	
1,700.0	1,697.5	1,697.4	1,694.4	3.7	3.6	163.63	-34.1	-26.1	83.1	75.9	7.24	11.479	
1,750.0	1,746.6	1,746.2	1,742.9	3.9	3.8	161.91	-39.3	-24.5	93.7	86.2	7.47	12.547	
1,800.0	1,795.6	1,794.9	1,791.2	4.0	3.9	160.67	-44.5	-22.9	105.2	97.5	7.69	13.671	
1,850.0	1,844.5	1,843.4	1,839.4	4.2	4.0	159.81	-49.7	-21.3	117.1	109.2	7.94	14.754	
1,900.0	1,893.4	1,891.9	1,887.7	4.4	4.2	159.12	-54.9	-19.6	129.1	120.9	8.19	15.769	
1,950.0	1,942.3	1,940.4	1,935.9	4.6	4.3	158.55	-60.1	-18.0	141.1	132.6	8.44	16.712	

<b>Company:</b>	BAYSWATER EXPLORATION & PRODUCTION	<b>Local Co-ordinate Reference:</b>	Well G&D HANKS 20-27
<b>Project:</b>	SEC.27-T7N-R66W	<b>TVD Reference:</b>	RKB @ 4893.0ft (EST RKB 13')
<b>Reference Site:</b>	G & D HANKS PAD	<b>MD Reference:</b>	RKB @ 4893.0ft (EST RKB 13')
<b>Site Error:</b>	0.0ft	<b>North Reference:</b>	True
<b>Reference Well:</b>	G&D HANKS 20-27	<b>Survey Calculation Method:</b>	Minimum Curvature
<b>Well Error:</b>	0.0ft	<b>Output errors are at</b>	2.00 sigma
<b>Reference Wellbore</b>	Wellbore #1	<b>Database:</b>	Landmark
<b>Reference Design:</b>	PLAN 1 JUNE 16 2010	<b>Offset TVD Reference:</b>	Offset Datum

Offset Design G & D HANKS PAD - G&D HANKS 10-27 - Wellbore #1 - PLAN 1 JUNE 16 2010													Offset Site Error:	0.0 ft
Survey Program: 0-MWD													Offset Well Error:	0.0 ft
Measured Depth (ft)	Vertical Depth (ft)	Measured Depth (ft)	Vertical Depth (ft)	Reference	Offset	Semi Major Axis	Highside Toolface (°)	Offset Wellbore Centre +N/-S (ft)	Offset Wellbore Centre +E/-W (ft)	Distance Between Centres (ft)	Distance Between Ellipses (ft)	Minimum Separation (ft)	Separation Factor	Warning
0.0	0.0	0.0	0.0	0.0	0.0	-62.05	-62.05	11.7	-22.0	24.9				
50.0	50.0	50.0	50.0	0.1	0.1	-62.05	-62.05	11.7	-22.0	24.9	24.7	0.11	220.979	
100.0	100.0	100.0	100.0	0.1	0.1	-62.05	-62.05	11.7	-22.0	24.9	24.6	0.22	110.588	
150.0	150.0	150.0	150.0	0.2	0.2	-62.05	-62.05	11.7	-22.0	24.9	24.4	0.45	55.294	
200.0	200.0	200.0	200.0	0.3	0.3	-62.05	-62.05	11.7	-22.0	24.9	24.2	0.67	36.863	
250.0	250.0	250.0	250.0	0.4	0.4	-62.05	-62.05	11.7	-22.0	24.9	24.0	0.90	27.647	
300.0	300.0	300.0	300.0	0.6	0.6	-62.05	-62.05	11.7	-22.0	24.9	23.7	1.12	22.118	
350.0	350.0	350.0	350.0	0.7	0.7	-62.05	-62.05	11.7	-22.0	24.9	23.5	1.35	18.431	
400.0	400.0	400.0	400.0	0.8	0.8	-62.05	-62.05	11.7	-22.0	24.9	23.3	1.57	15.798	
450.0	450.0	450.0	450.0	0.9	0.9	-62.05	-62.05	11.7	-22.0	24.9	23.1	1.80	13.823	
500.0	500.0	500.0	500.0	1.0	1.0	-62.05	-62.05	11.7	-22.0	24.9	22.8	2.02	12.288	
550.0	550.0	550.0	550.0	1.1	1.1	-62.05	-62.05	11.7	-22.0	24.9	22.6	2.25	11.059	
600.0	600.0	600.0	600.0	1.2	1.2	-62.05	-62.05	11.7	-22.0	24.9	22.4	2.47	10.053	
650.0	650.0	650.0	650.0	1.3	1.3	-62.05	-62.05	11.7	-22.0	24.9	22.2	2.70	9.216	
700.0	700.0	700.0	700.0	1.5	1.5	-62.05	-62.05	11.7	-22.0	24.9	21.9	2.92	8.507	
750.0	750.0	750.0	750.0	1.6	1.6	-62.05	-62.05	11.7	-22.0	24.9	21.7	3.15	7.899	
800.0	800.0	800.0	800.0	1.7	1.7	-62.05	-62.05	11.7	-22.0	24.9	21.5	3.37	7.373	
850.0	850.0	850.0	850.0	1.8	1.8	-62.05	-62.05	11.7	-22.0	24.9	21.3	3.60	6.912	
900.0	900.0	900.0	900.0	1.9	1.9	-62.05	-62.05	11.7	-22.0	24.9	21.0	3.82	6.505 CC	
950.0	950.0	949.8	949.8	2.0	2.0	-61.13	-61.13	12.1	-21.9	25.0	21.0	4.05	6.185 ES	
1,000.0	1,000.0	999.6	999.6	2.1	2.1	-58.44	-58.44	13.4	-21.8	25.6	21.3	4.27	5.985	
1,050.0	1,050.0	1,049.4	1,049.3	2.2	2.2	-54.22	-54.22	15.5	-21.5	26.6	22.1	4.49	5.909 SF	
1,100.0	1,100.0	1,099.0	1,098.9	2.4	2.4	-48.87	-48.87	18.5	-21.2	28.2	23.5	4.72	5.973	
1,150.0	1,150.0	1,148.6	1,148.3	2.5	2.5	-42.91	-42.91	22.4	-20.8	30.6	25.6	4.94	6.186	
1,200.0	1,200.0	1,198.0	1,197.4	2.6	2.6	-36.87	-36.87	27.0	-20.3	33.9	28.7	5.17	6.556	
1,250.0	1,250.0	1,247.2	1,246.3	2.7	2.7	-101.43	-101.43	32.5	-19.7	38.3	32.9	5.40	7.092	
1,300.0	1,300.0	1,296.3	1,295.0	2.8	2.8	-97.83	-97.83	38.9	-19.0	43.7	38.1	5.62	7.777	
1,350.0	1,349.9	1,345.1	1,343.4	2.9	3.0	-95.47	-95.47	46.0	-18.2	50.1	44.3	5.85	8.568	
1,400.0	1,399.8	1,393.8	1,391.4	3.0	3.1	-94.04	-94.04	53.9	-17.4	57.3	51.3	6.08	9.439	
1,450.0	1,449.7	1,442.3	1,439.0	3.1	3.2	-93.27	-93.27	62.5	-16.4	65.4	59.1	6.31	10.359	
1,500.0	1,499.5	1,490.5	1,486.3	3.2	3.4	-92.98	-92.98	71.9	-15.4	74.2	67.6	6.55	11.330	
1,550.0	1,549.1	1,539.3	1,534.0	3.4	3.6	-93.09	-93.09	82.1	-14.3	83.5	76.8	6.79	12.298	
1,600.0	1,598.7	1,588.3	1,582.0	3.5	3.7	-93.67	-93.67	92.3	-13.2	93.0	86.0	7.05	13.200	
1,650.0	1,648.2	1,637.4	1,630.0	3.6	3.9	-94.59	-94.59	102.5	-12.0	102.6	95.2	7.31	14.022	
1,700.0	1,697.5	1,686.4	1,677.9	3.7	4.1	-95.78	-95.78	112.7	-10.9	112.2	104.6	7.59	14.795	
1,750.0	1,746.6	1,735.3	1,725.7	3.9	4.3	-97.16	-97.16	122.9	-9.8	122.1	114.2	7.88	15.493	
1,800.0	1,795.6	1,784.1	1,773.5	4.0	4.4	-98.67	-98.67	133.1	-8.7	132.1	123.9	8.18	16.155	
1,850.0	1,844.5	1,832.9	1,821.2	4.2	4.6	-100.33	-100.33	143.3	-7.6	142.3	133.8	8.49	16.757	

<b>Company:</b>	BAYSWATER EXPLORATION & PRODUCTION	<b>Local Co-ordinate Reference:</b>	Well G&D HANKS 20-27
<b>Project:</b>	SEC.27-T7N-R66W	<b>TVD Reference:</b>	RKB @ 4893.0ft (EST RKB 13')
<b>Reference Site:</b>	G & D HANKS PAD	<b>MD Reference:</b>	RKB @ 4893.0ft (EST RKB 13')
<b>Site Error:</b>	0.0ft	<b>North Reference:</b>	True
<b>Reference Well:</b>	G&D HANKS 20-27	<b>Survey Calculation Method:</b>	Minimum Curvature
<b>Well Error:</b>	0.0ft	<b>Output errors are at</b>	2.00 sigma
<b>Reference Wellbore</b>	Wellbore #1	<b>Database:</b>	Landmark
<b>Reference Design:</b>	PLAN 1 JUNE 16 2010	<b>Offset TVD Reference:</b>	Offset Datum

Reference Depths are relative to RKB @ 4893.0ft (EST RKB 13')  
Offset Depths are relative to Offset Datum  
Central Meridian is -105.500000 °

Coordinates are relative to: G&D HANKS 20-27  
Coordinate System is US State Plane 1983, Colorado Northern Zone  
Grid Convergence at Surface is: 0.48°



<b>Company:</b>	BAYSWATER EXPLORATION & PRODUCTION	<b>Local Co-ordinate Reference:</b>	Well G&D HANKS 20-27
<b>Project:</b>	SEC.27-T7N-R66W	<b>TVD Reference:</b>	RKB @ 4893.0ft (EST RKB 13')
<b>Reference Site:</b>	G & D HANKS PAD	<b>MD Reference:</b>	RKB @ 4893.0ft (EST RKB 13')
<b>Site Error:</b>	0.0ft	<b>North Reference:</b>	True
<b>Reference Well:</b>	G&D HANKS 20-27	<b>Survey Calculation Method:</b>	Minimum Curvature
<b>Well Error:</b>	0.0ft	<b>Output errors are at</b>	2.00 sigma
<b>Reference Wellbore</b>	Wellbore #1	<b>Database:</b>	Landmark
<b>Reference Design:</b>	PLAN 1 JUNE 16 2010	<b>Offset TVD Reference:</b>	Offset Datum

Reference Depths are relative to RKB @ 4893.0ft (EST RKB 13')  
Offset Depths are relative to Offset Datum  
Central Meridian is -105.500000 °

Coordinates are relative to: G&D HANKS 20-27  
Coordinate System is US State Plane 1983, Colorado Northern Zone  
Grid Convergence at Surface is: 0.48°

