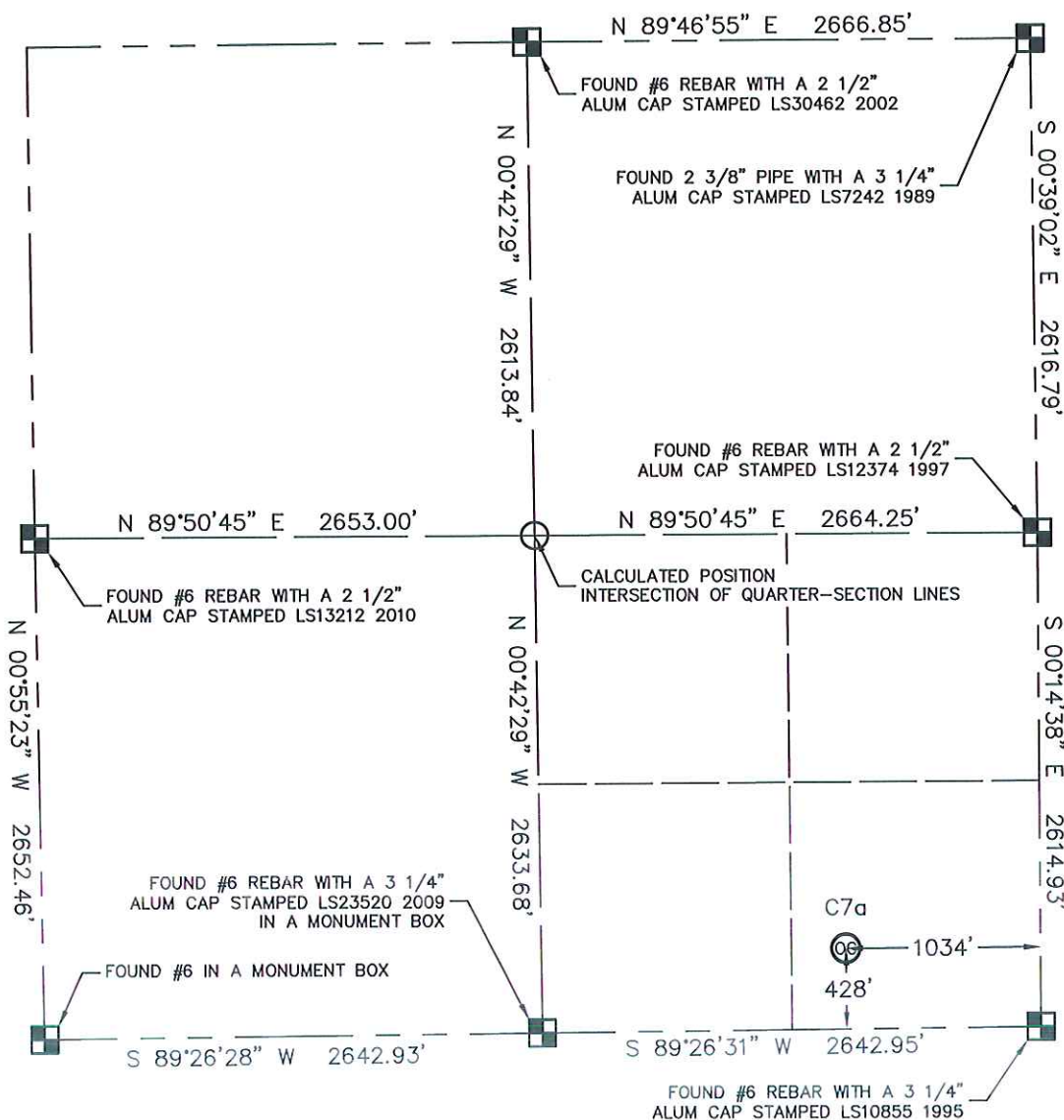


## WELL LOCATION CERTIFICATE

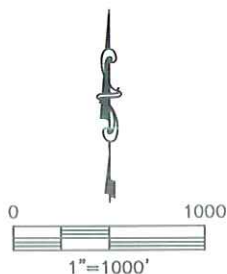
THIS MAP DOES NOT REPRESENT A BOUNDARY SURVEY

SECTION: 34  
TOWNSHIP: 7N  
RANGE: 63W

In accordance with a request from JIM GODDARD with CONQUEST WATER SERVICES

King Surveyors Inc. has determined the surface location of C7a to be 428' from the SOUTH line and 1034' from the EAST line, as measured at right angles, from the section lines of Section 34, Township 7 North, Range 63 West of the Sixth Principal Meridian, County of Weld, State of Colorado.

I hereby state that this Well Location Certificate was prepared by me, or under my direct supervision, that the fieldwork was completed on 4-22-2010, for and on behalf of CONQUEST WATER SERVICES. That this is not a Land Survey Plat or an Improvement Survey Plat, and that it is not to be relied upon for establishment of fence, building, or other future improvement lines.



## NOTE:

- 1) Bearings shown are Grid Bearings of the Colorado State Plane Coordinate System, North Zone, North American Datum 1983/2007. The lineal dimensions as contained herein are based upon the "U.S. Survey Foot."
- 2) Ground elevations are based on an observed GPS elevation (NAVD 1988 DATUM).
- 3) NEAREST EXISTING WELL: NONE
- 4) IMPROVEMENTS: See VISIBLE IMPROVEMENTS exhibit for all visible improvements within 400' of well head.
- 5) SURFACE USE: GRASSLAND

## SURFACE LOCATION

LATITUDE: 40.52414°N  
LONGITUDE: 104.41672°W  
PDOP: 1.7  
ELEV: 4713'  
1/4, 1/4: SE1/4SE1/4  
NEAREST PROPERTY LINE: 428' SOUTH

## NOTE

According to Colorado law, you must commence any legal action based upon any defect in this W.L.C. within three years after you discover such defect. In no event, may any action based upon any defect in this survey be commenced more than ten years after the date of the certificate shown hereon. (13-80-105 C.R.S.)

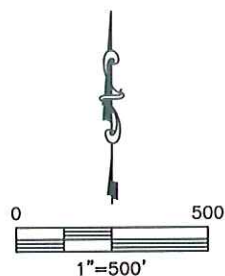
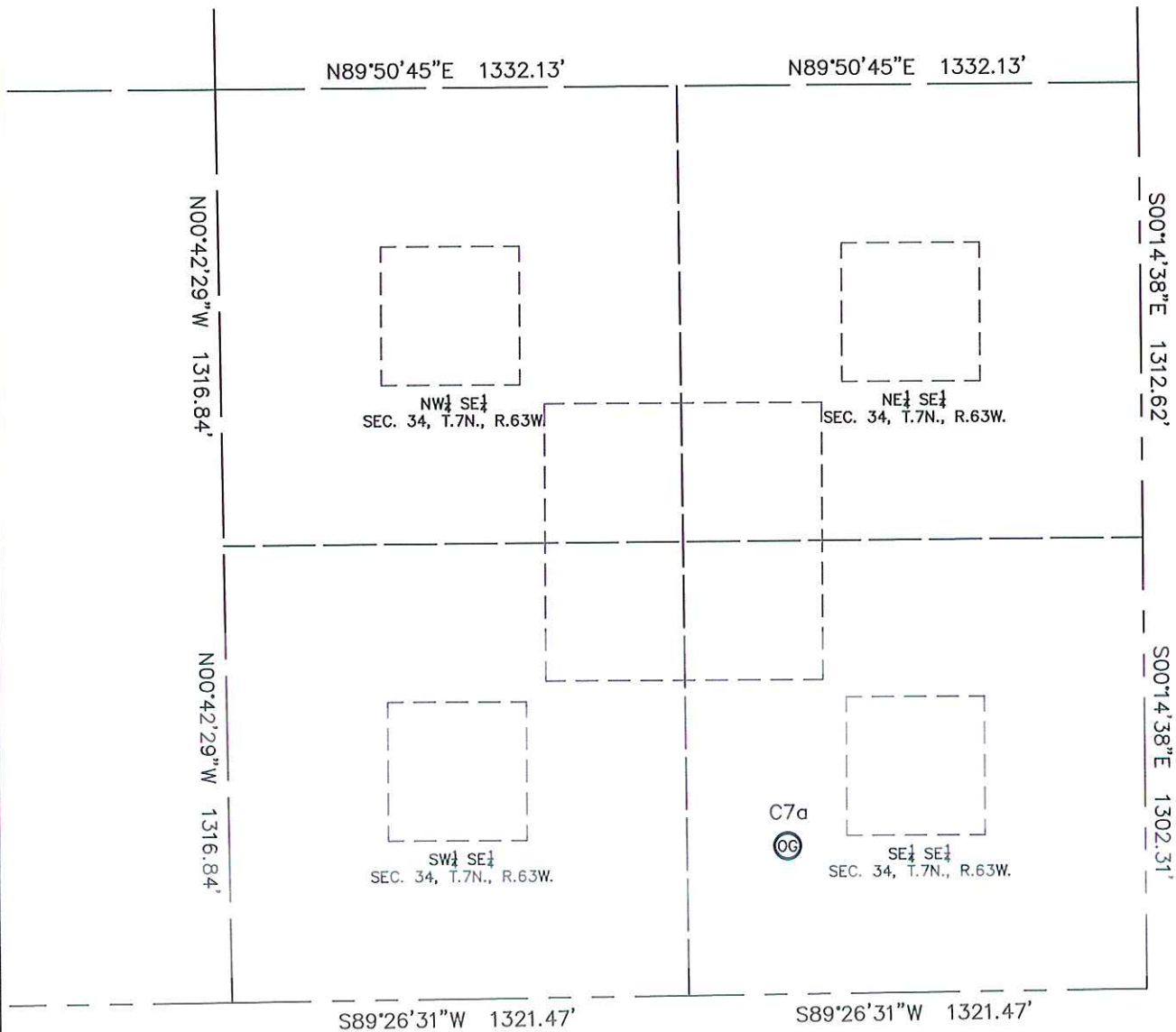
## LEGEND

- = ALIQUOT MONUMENT AS DESCRIBED  
 = CALCULATED POSITION

Michael Chad Dika 38106 On Behalf of King Surveyors, Inc.  
 Colorado Licensed Professional Land Surveyor #38106  
 PROJECT#: 2010142  
 Date: 4/30/2010

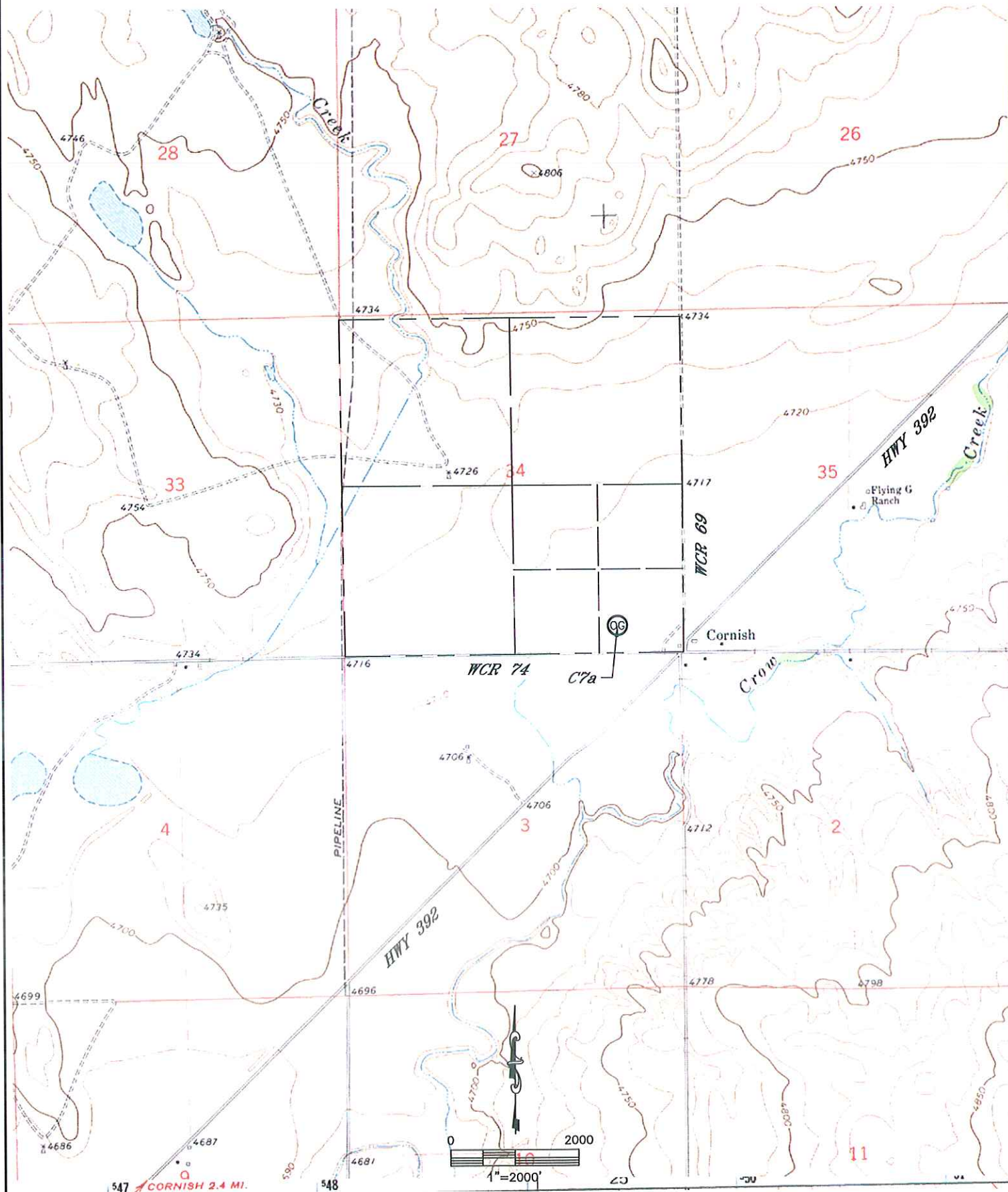
## SITE SKETCH

C7a

SECTION: 34  
TOWNSHIP: 7N  
RANGE: 63W

# ACCESS ROAD MAP C7a

SECTION: 34  
TOWNSHIP: 7N  
RANGE: 63W

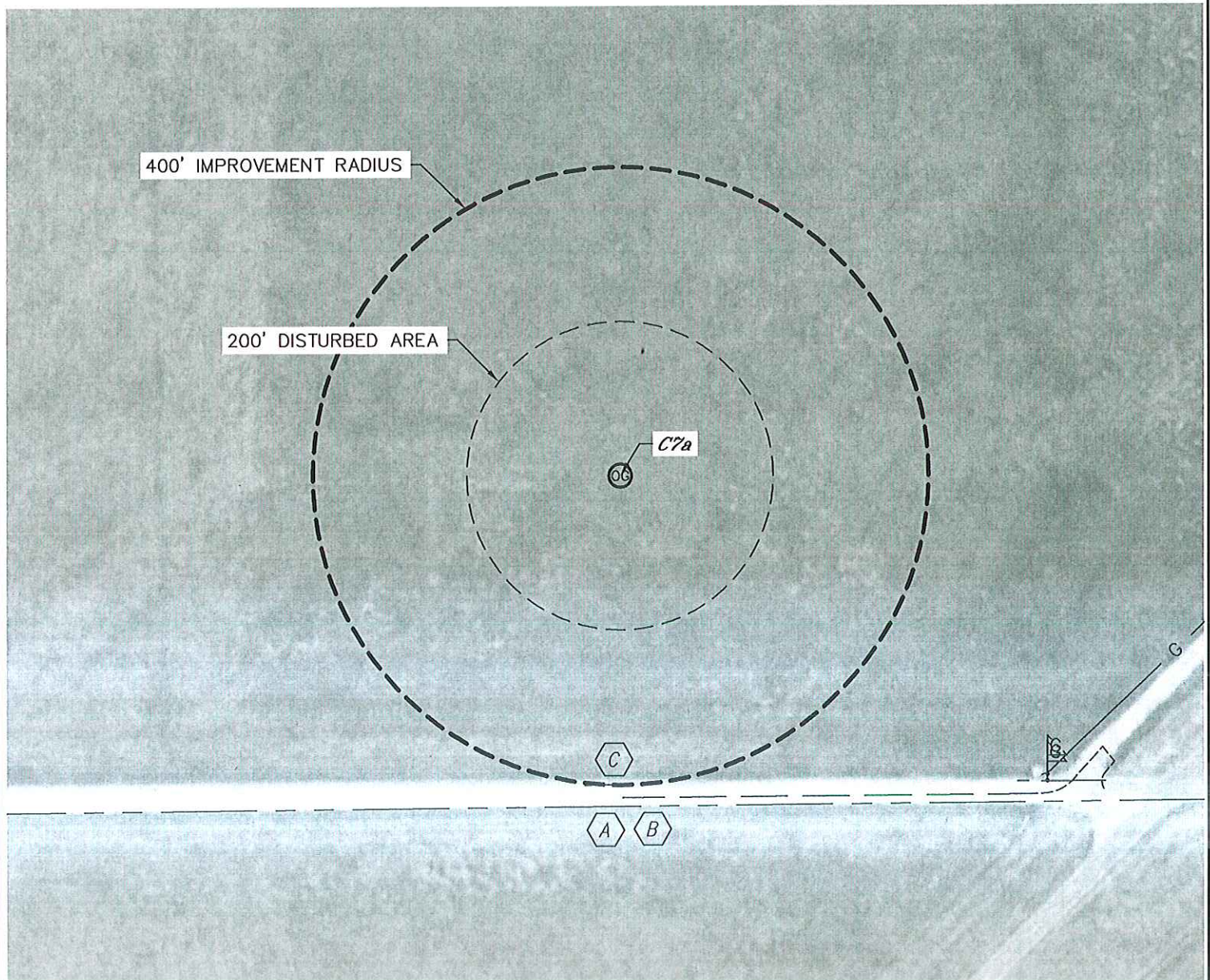




# VISIBLE IMPROVEMENTS

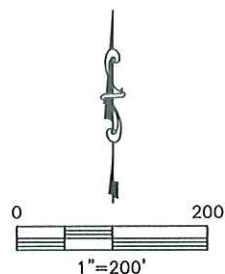
C7a

SECTION: 34  
TOWNSHIP: 7N  
RANGE: 63W



## IMPROVEMENTS:

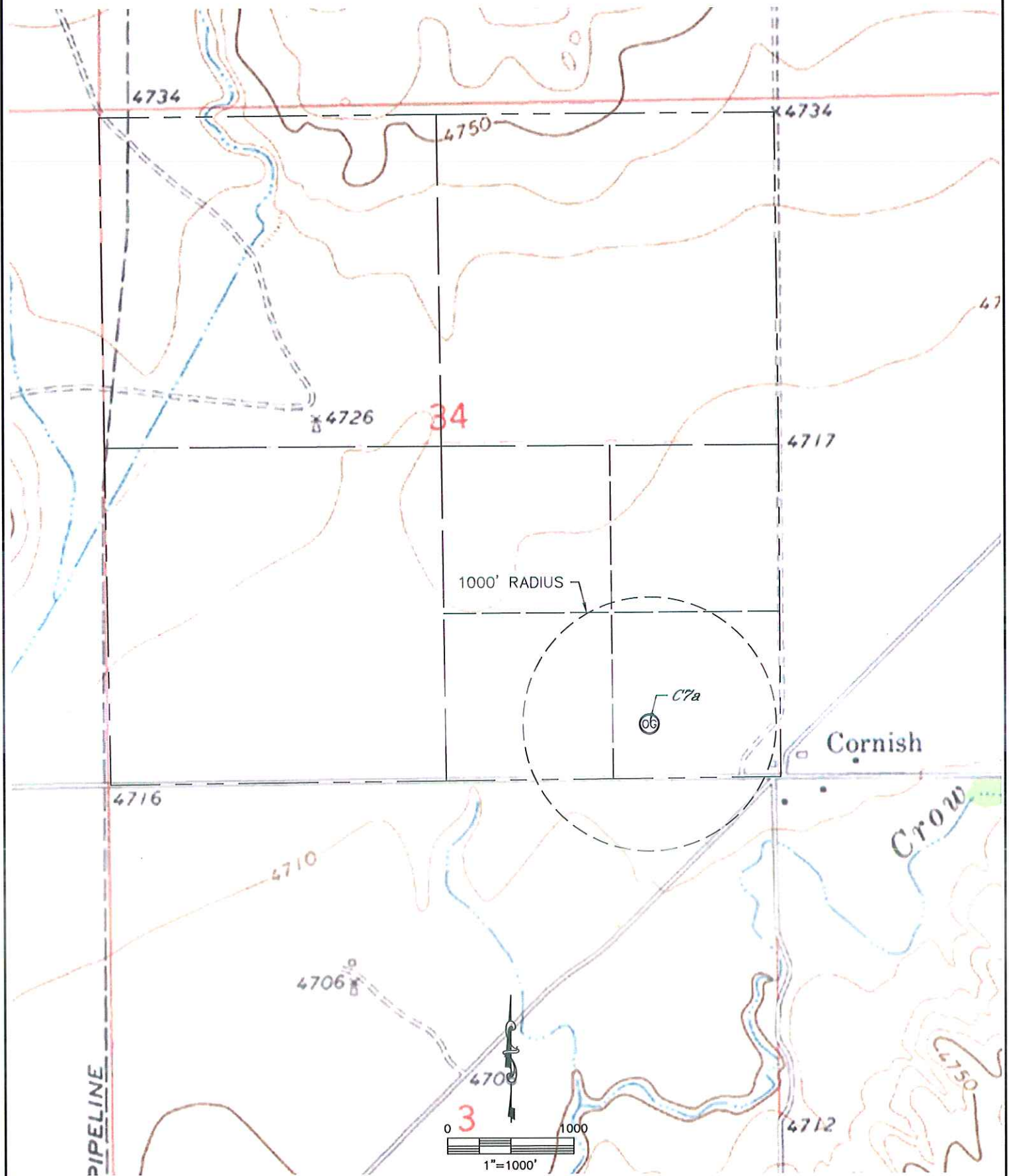
- (A) NEAREST PROPERTY LINE 428' SOUTH
- (B) NORTH EDGE OF ASPHALT OF WCR 74 417' SOUTH
- (C) GAS LINE 399' SOUTH





# HYDROLOGY MAP C7a

SECTION: 34  
TOWNSHIP: 7N  
RANGE: 63W



NO VISIBLE SURFACE WATER WITHIN 1000'

PROJECT#: 2010142

# PHOTOGRAPHS

C7a

SECTION: 34  
TOWNSHIP: 7N  
RANGE: 63W



LOOKING NORTH



LOOKING EAST



LOOKING SOUTH



LOOKING WEST