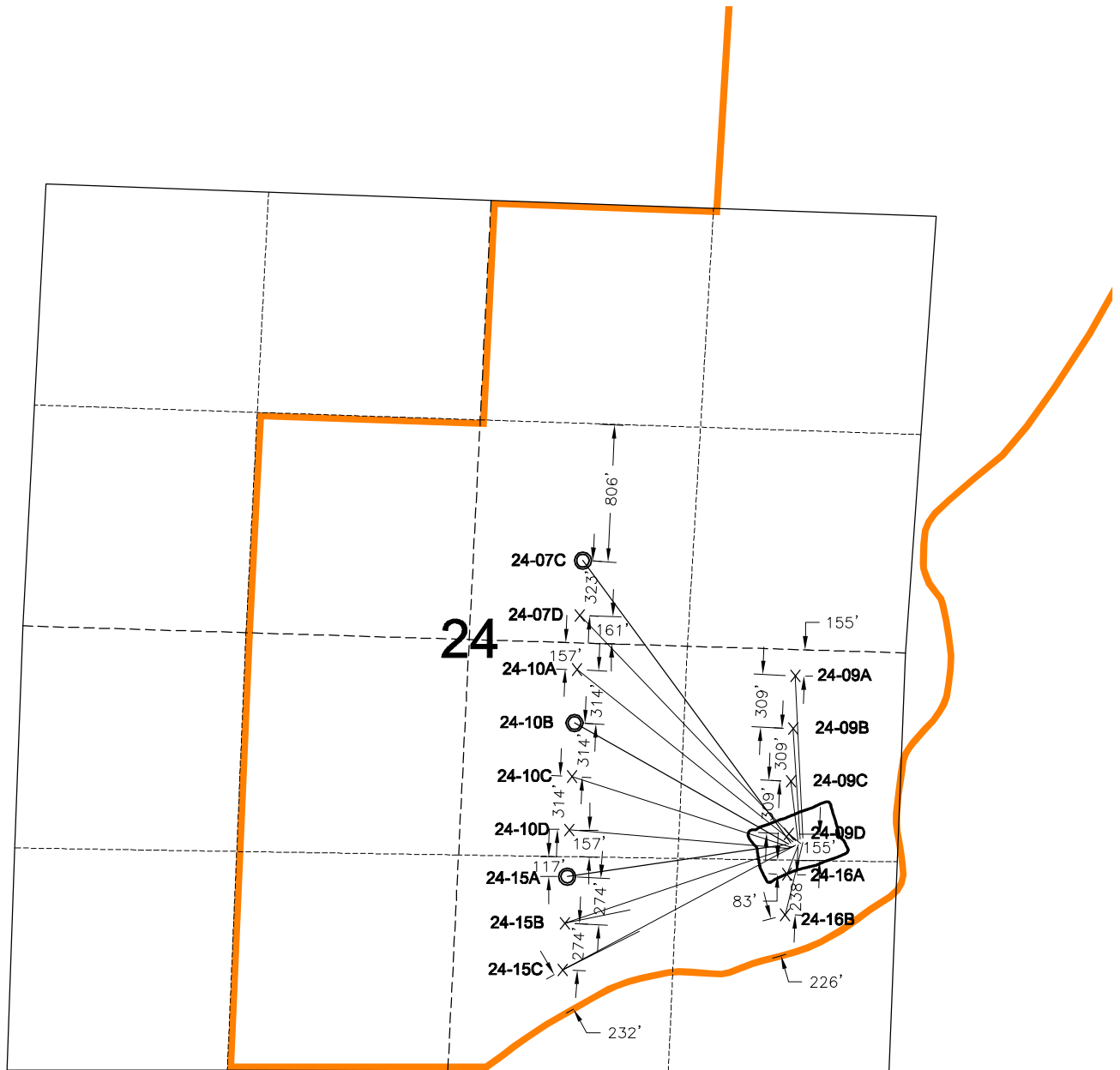


MULTI-WELL PLAN



LARAMIE ENERGY II LEASE BOUNDARY

○ PROPOSED BOTTOM HOLE LOCATION

× PROPOSED FUTURE BOTTOM HOLE LOCATION
PENDING 10-ACRE DOWNSPACING

7/21/10



North

0 1000 2000

Graphic Scale in Feet
1 inch = 1000 feet



LAND SURVEYING AND MAPPING
LAFAYETTE - WINTER PARK
Ph 303 666 0379 Fx 303 665 6320

LARAMIE ENERGY II LLC
HAWXHURST 24-09 PAD

NE1/4 SE1/4 SEC. 24 T9S R95W
6th PM MESA COUNTY COLORADO