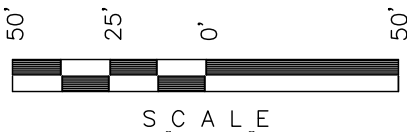


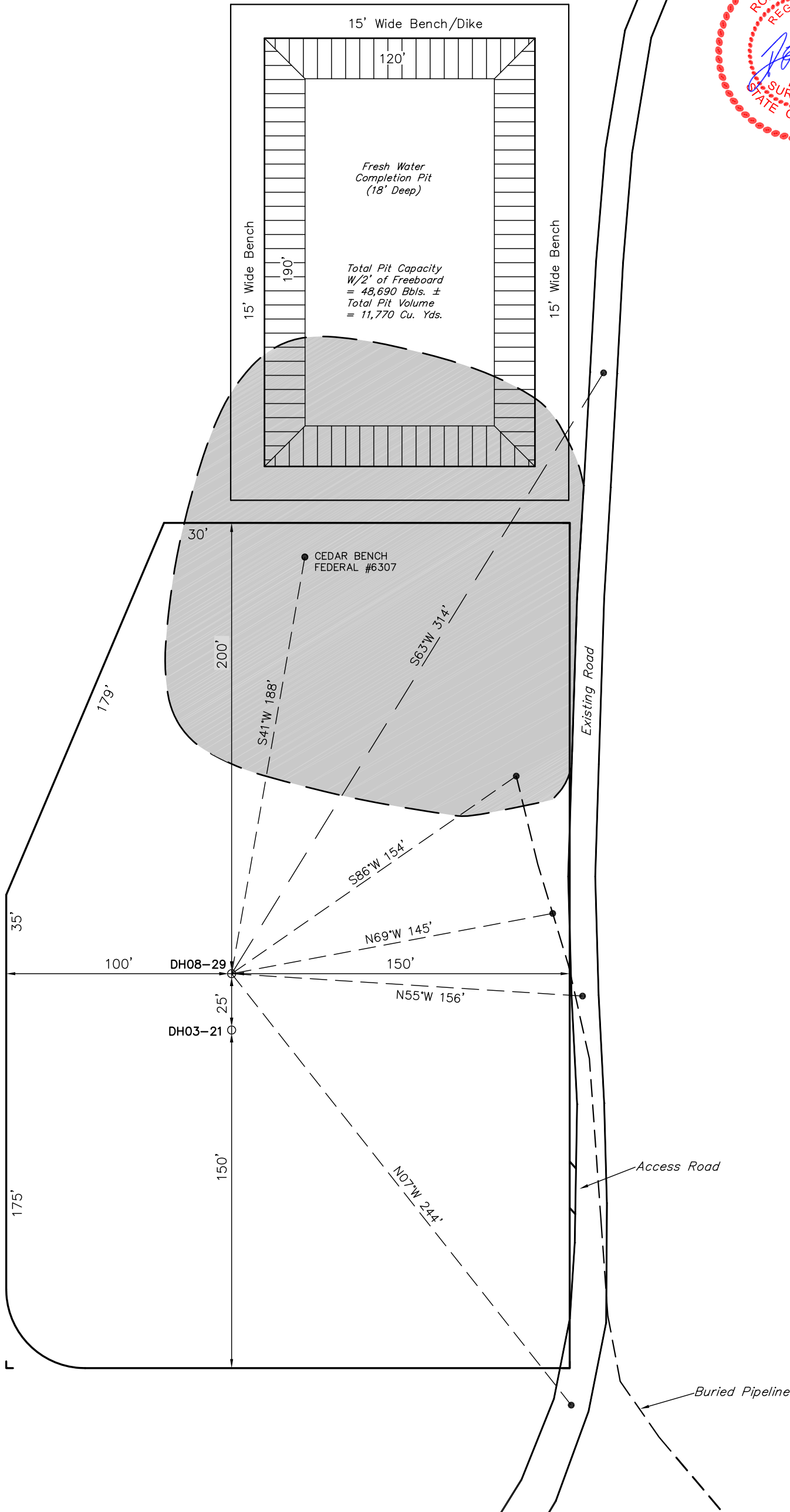
Encana OIL & GAS (USA) INC.
ADDENDUM TO LEGAL PLAT FOR ALT. PAD
CB FED. DH08-29 & DH03-21 (A28 6100)
SECTION 28, T6S, R100W, 6th P.M.
NE 1/4 NE 1/4

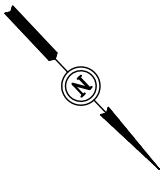


S C A L E

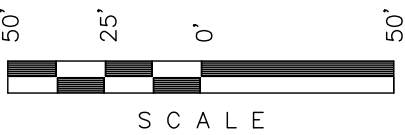
Sheet 1c of 12

SCALE: 1" = 60'
DATE: 03-02-10
DRAWN BY: D.R.B.
Rev: 03-22-10 D.R.B.
Rev: 04-22-10 D.R.B.
Rev: 07-13-10 D.R.B.





Encana OIL & GAS (USA) INC.
WELL PAD INTERFERENCE PLAT FOR ALT. PAD
CB FED. DH08-29 & DH03-21 (A28 6100)
SECTION 28, T6S, R100W, 6th P.M.
NE 1/4 NE 1/4

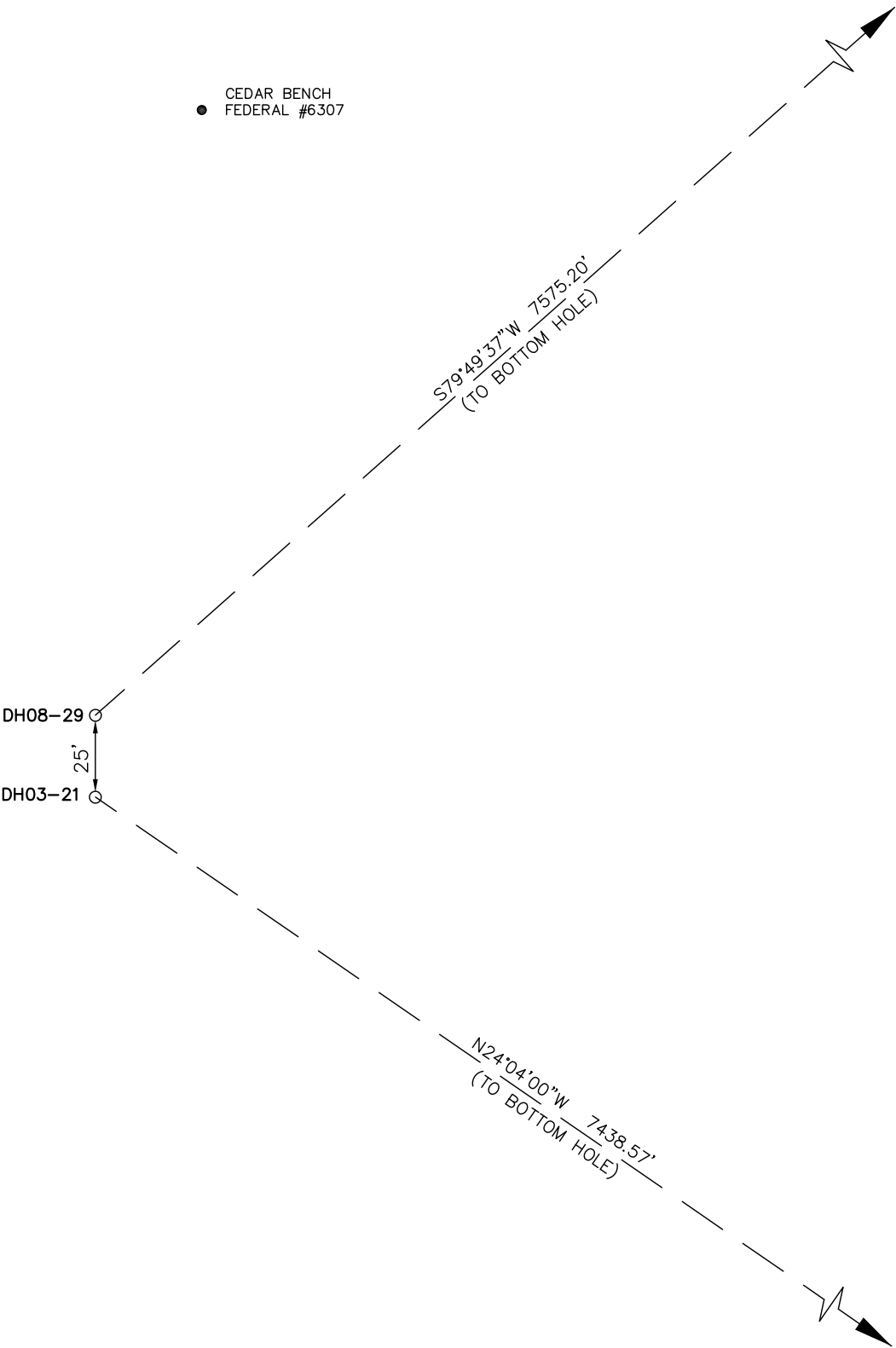


Sheet 2 of 12

SCALE: 1" = 50'
DATE: 03-02-10
DRAWN BY: D.R.B.
Rev: 03-22-10 D.R.B.
Rev: 04-22-10 D.R.B.
Rev: 06-29-10 D.R.B.
Rev: 07-13-10 D.R.B.



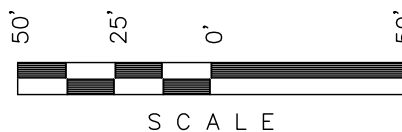
● CEDAR BENCH
FEDERAL #6307



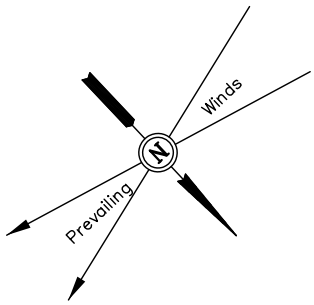
Encana OIL & GAS (USA) INC.

CONSTRUCTION LAYOUT FOR ALT. PAD
CB FED. DH08-29 & DH03-21 (A28 6100)
SECTION 28, T6S, R100W, 6th P.M.
NE 1/4 NE 1/4

Sheet 3 of 12



SCALE



SCALE: 1" = 50'
DATE: 03-02-10
DRAWN BY: D.R.B.
Rev: 05-21-10 D.R.B.
Rev: 06-24-10 D.R.B.
Rev: 07-12-10 D.R.B.
Rev: 07-13-10 D.R.B.

LEGEND:

- 1 - OVERFLOW
- 2 - SEWER TANK
- 3 - LIFT STATION
- 4 - SEWER LINE
- 5 - WATER TANK
- 6 - FREEZER
- 7 - STORAGE
- 8 - GENERATOR
- 9 - FUEL
- 10 - TRANSFORMER

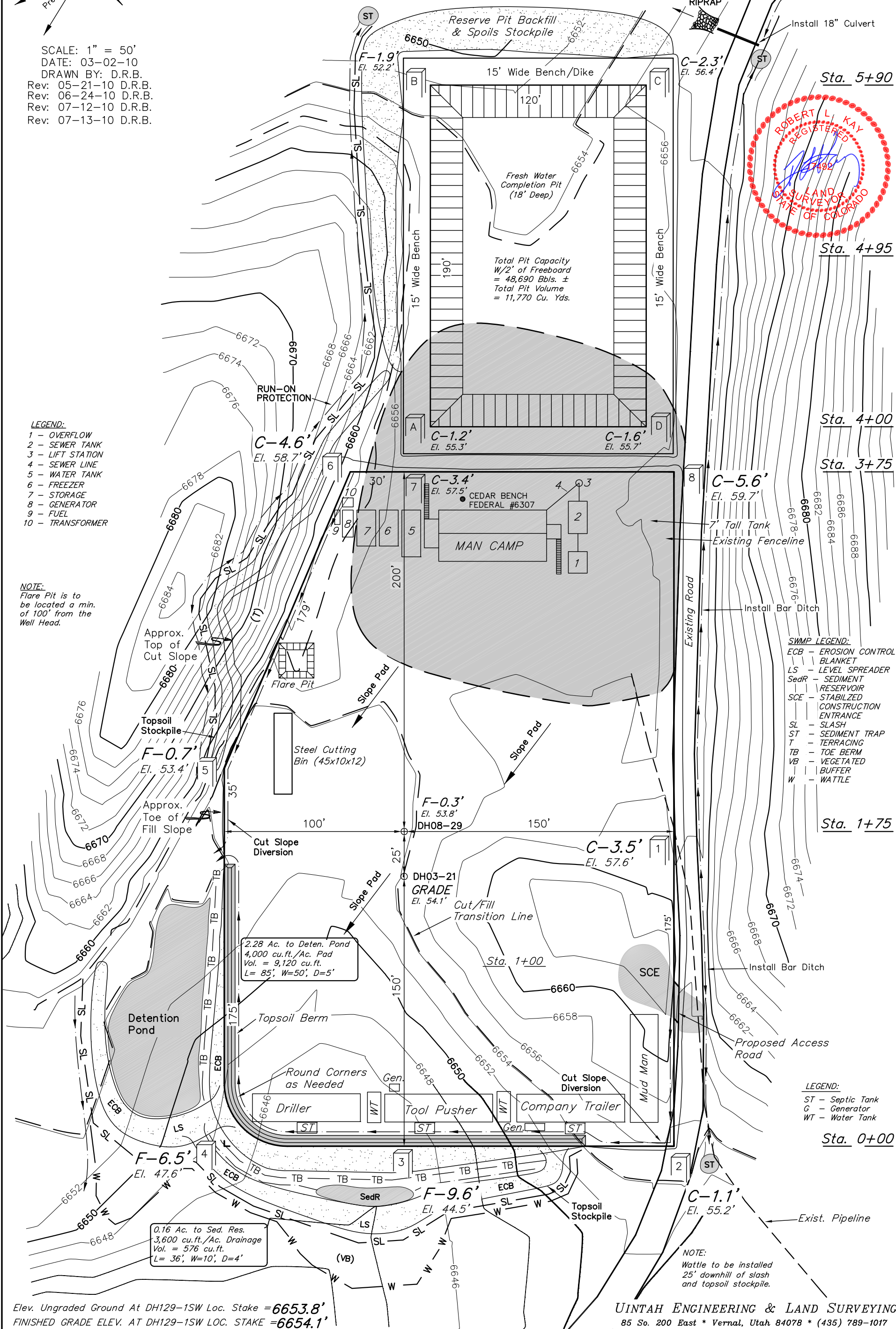
NOTE:
Flare Pit is to
be located a min.
of 100' from the
Well Head.

SWMP LEGEND:

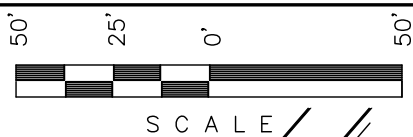
- ECB - EROSION CONTROL
- BLANKET
- LS - LEVEL SPREADER
- SedR - SEDIMENT
- RESERVOIR
- SCE - STABILIZED
- CONSTRUCTION
- ENTRANCE
- SL - SLASH
- ST - SEDIMENT TRAP
- T - TERRACING
- TB - TOE BERM
- VB - VEGETATED
- W - BUFFER
- WATTLE

LEGEND:

- ST - Septic Tank
- G - Generator
- WT - Water Tank



Encana OIL & GAS (USA) INC.
PRE-CONSTRUCTION LAYOUT FOR ALT. PAD
CB FED. DH08-29 & DH03-21 (A28 6100)
SECTION 28, T6S, R100W, 6th P.M.
NE 1/4 NE 1/4



SCALE

RipRap

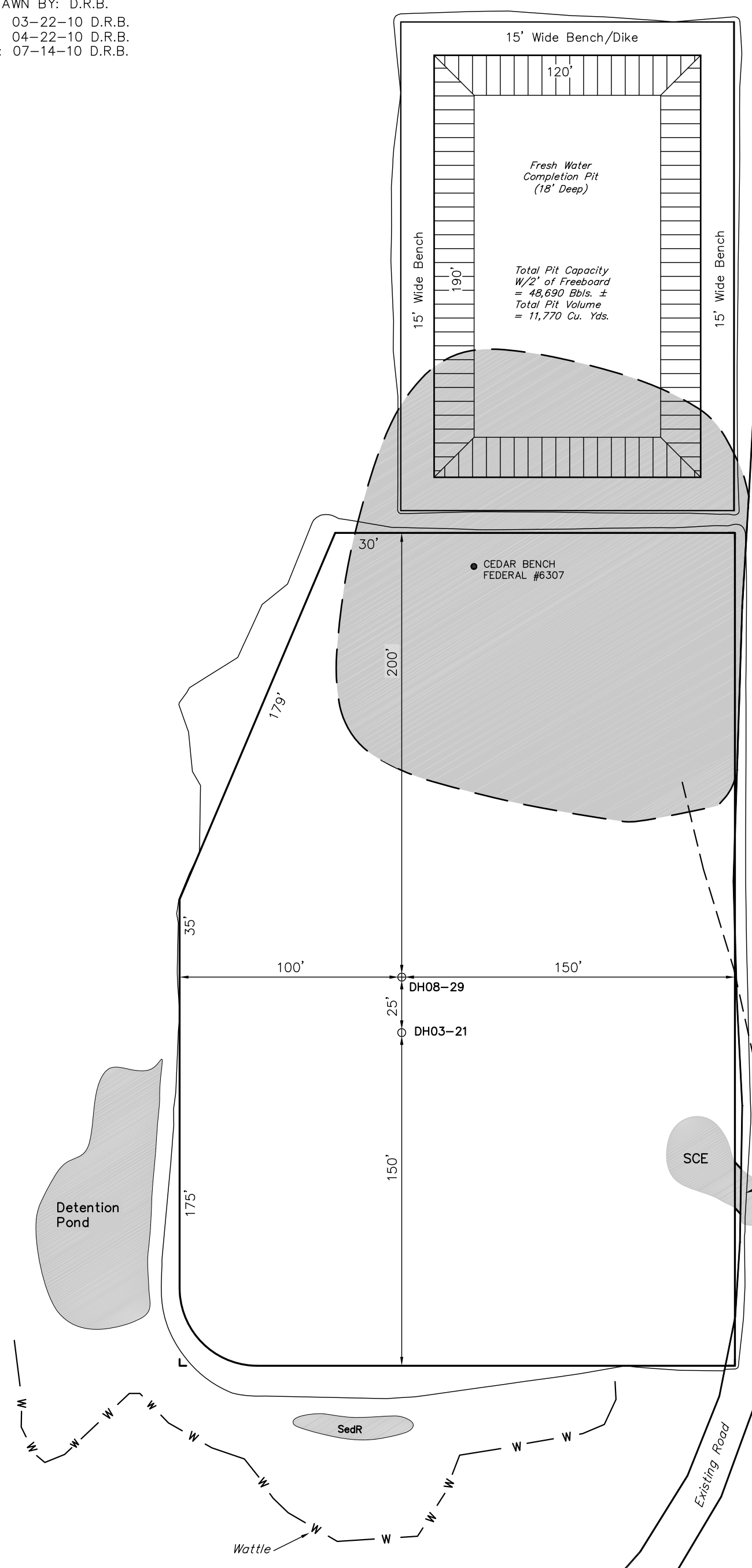
Install 18" Culvert

ST

Sheet 3a of 12



SCALE: 1" = 50'
DATE: 03-02-10
DRAWN BY: D.R.B.
Rev: 03-22-10 D.R.B.
Rev: 04-22-10 D.R.B.
Rev: 07-14-10 D.R.B.

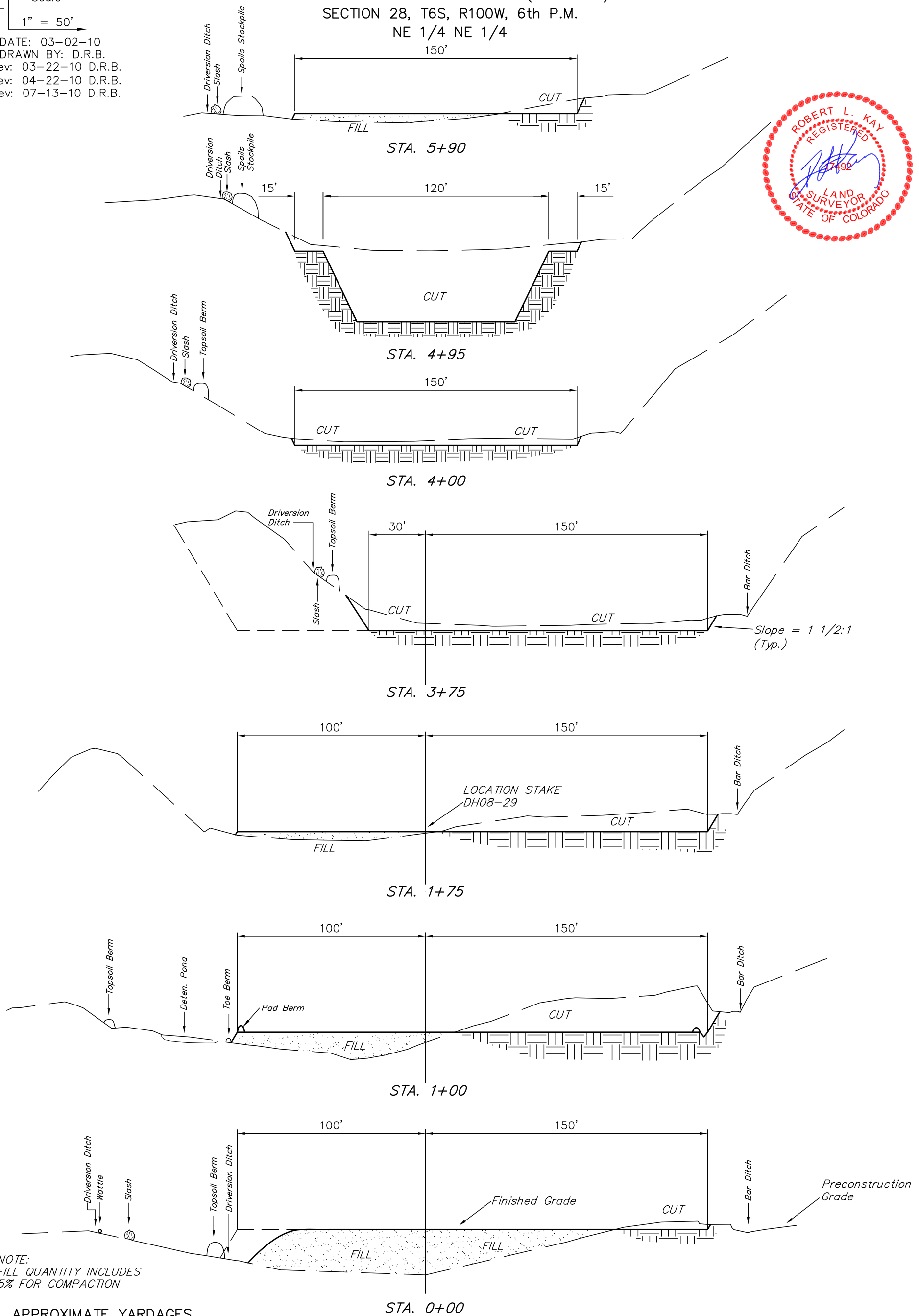


- SWMP LEGEND:
- SedR - SEDIMENT RESERVOIR
 - SCE - STABILIZED CONSTRUCTION ENTRANCE
 - ST - SEDIMENT TRAP
 - W - WATTLE

CONSTRUCTION LAYOUT CROSS SECTION FOR ALT. PAD
CB FED. DH08-29 & DH03-21 (A28 6100)
SECTION 28, T6S, R100W, 6th P.M.
NE 1/4 NE 1/4

1" = 20'
X-Section
Scale
1" = 50'

DATE: 03-02-10
DRAWN BY: D.R.B.
Rev: 03-22-10 D.R.B.
Rev: 04-22-10 D.R.B.
Rev: 07-13-10 D.R.B.



* NOTE:
FILL QUANTITY INCLUDES
5% FOR COMPACTION

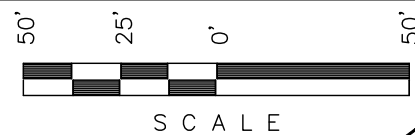
APPROXIMATE YARDAGES

(6") Topsoil Stripping = 2,310 Cu. Yds.
(New Construction Only)
Remaining Location = 13,960 Cu. Yds.
TOTAL CUT = 16,270 CU.YDS.
FILL = 5,360 CU.YDS.

EXCESS MATERIAL = 10,910 Cu. Yds.
Topsoil & Pit Backfill = 8,200 Cu. Yds.
(1/2 Pit Vol.)
EXCESS UNBALANCE = 2,710 Cu. Yds.
(After Interim Rehabilitation)

NOTE:
Per NRCS U.S. Soil Survey for Rio
Blanco County Area, CO. Site has
Channery, Sandy Loam, and
Unweathered Bedrock.

Encana OIL & GAS (USA) INC.
TYPICAL RIG LAYOUT FOR ALT. PAD
CB FED. DH08-29 & DH03-21 (A28 6100)
SECTION 28, T6S, R100W, 6th P.M.
NE 1/4 NE 1/4



Sheet 5 of 12

SCALE: 1" = 50'
DATE: 03-02-10
DRAWN BY: D.R.B.
Rev: 03-22-10 D.R.B.
Rev: 04-22-10 D.R.B.
Rev: 05-21-10 D.R.B.
Rev: 06-24-10 D.R.B.
Rev: 07-13-10 D.R.B.



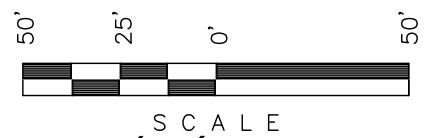
LEGEND:
1 - OVERFLOW
2 - SEWER TANK
3 - LIFT STATION
4 - SEWER LINE
5 - WATER TANK
6 - FREEZER
7 - STORAGE
8 - GENERATOR
9 - FUEL
10 - TRANSFORMER

NOTE:
Flare Pit is to be located a min. of 100' from the Well Head.

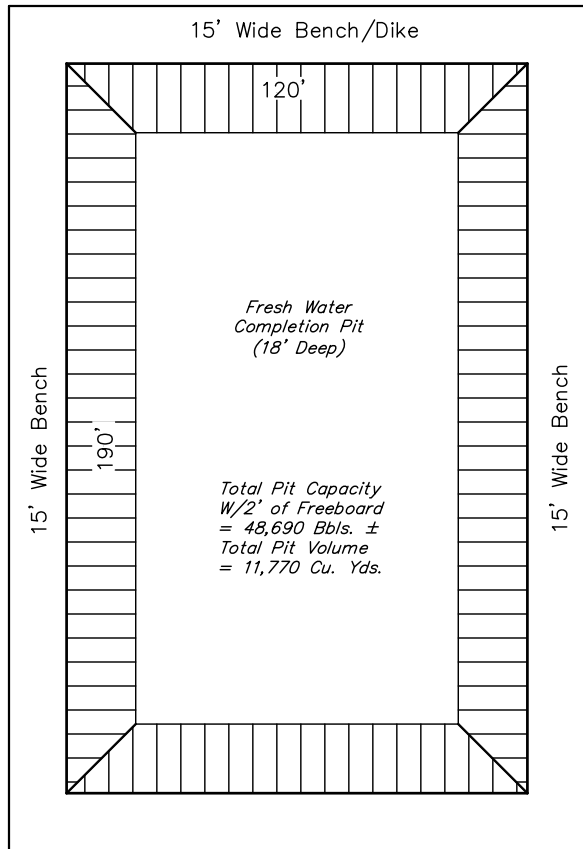
SWMP LEGEND:
SedR - SEDIMENT RESERVOIR
SCE - STABILIZED CONSTRUCTION ENTRANCE
ST - SEDIMENT TRAP
W - WATTLE

Legend:
ST = Septic Tank
G = Generator
WT = Water Tank

Encana OIL & GAS (USA) INC.
PRODUCTION SCHEMATIC FOR ALT. PAD
CB FED. DH08-29 & DH03-21 (A28 6100)
SECTION 28, T6S, R100W, 6th P.M.
NE 1/4 NE 1/4

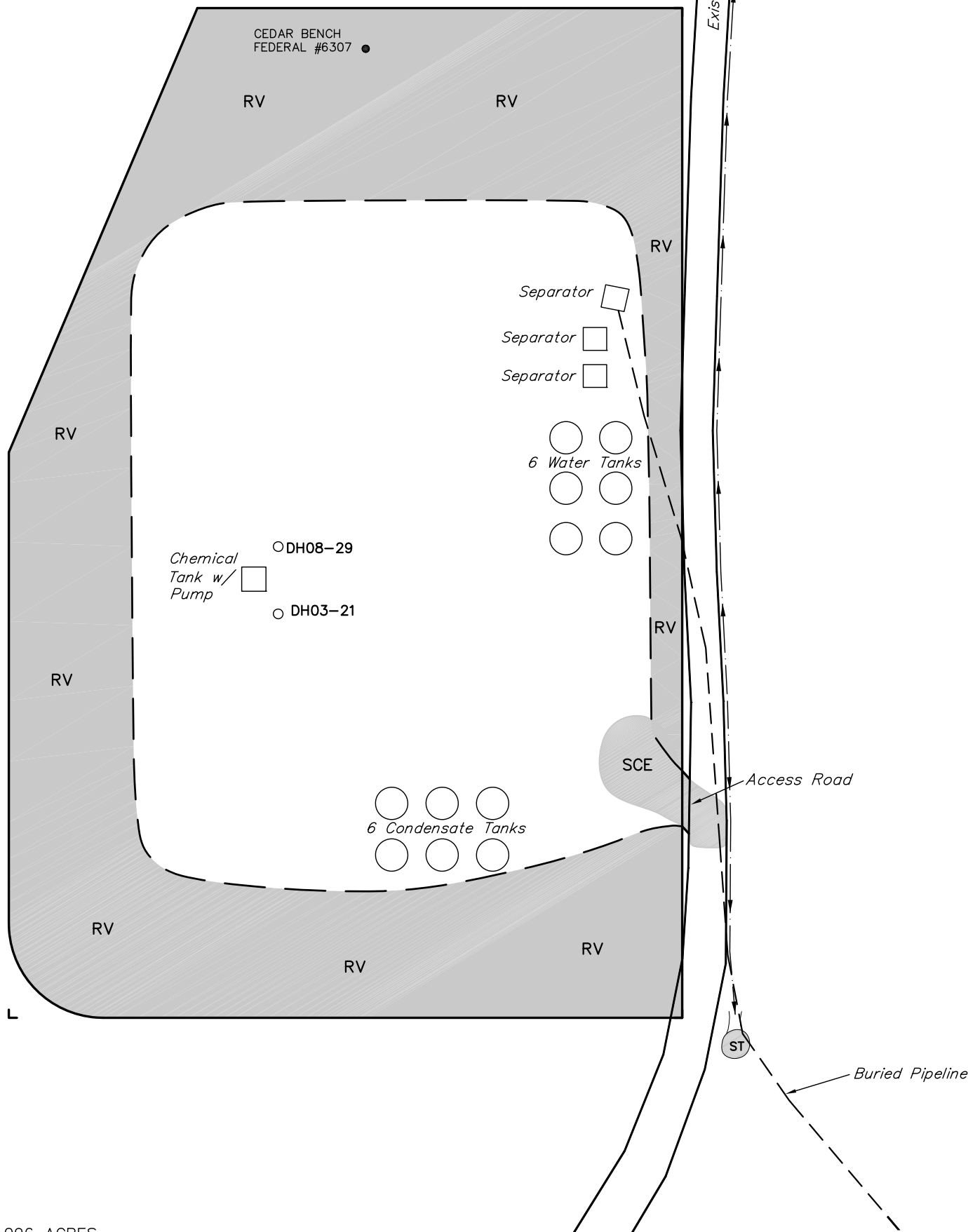


Sheet 6 of 12



SCALE: 1" = 50'
DATE: 03-02-10
DRAWN BY: D.R.B.
Rev: 03-22-10 D.R.B.
Rev: 04-22-10 D.R.B.
Rev: 07-13-10 D.R.B.

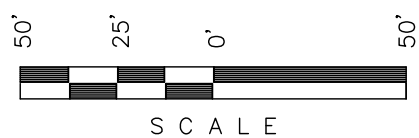
LEGEND:
RV - REVEGETATION
SCE - STABILIZED
CONSTRUCTION
ENTRANCE
ST - SEDIMENT TRAP



APPROXIMATE ACREAGES
UN-RECLAIMED AREA = ± 1.096 ACRES

UINTAH ENGINEERING & LAND SURVEYING
85 So. 200 East * Vernal, Utah 84078 * (435) 789-1017

Encana OIL & GAS (USA) INC.
SURFACE DISTURBANCE AREA FOR ALT. PAD
CB FED. DH08-29 & DH03-21 (A28 6100)
SECTION 28, T6S, R100W, 6th P.M.
NE 1/4 NE 1/4



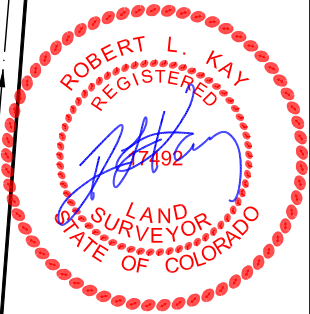
Sheet 7 of 12

SCALE: 1" = 50'
DATE: 03-02-10
DRAWN BY: D.R.B.
Rev: 03-22-10 D.R.B.
Rev: 04-22-10 D.R.B.
Rev: 05-24-10 D.R.B.
Rev: 06-24-10 D.R.B.
Rev: 07-13-10 D.R.B.

NOTE:
Flare Pit is to
be located a min.
of 100' from the
Well Head.

LINE TABLE		
LINE	BEARING	LENGTH
L1	S64°15'13"E	39.79'
L2	S28°35'59"E	27.71'
L3	S08°25'22"E	32.00'
L4	S33°21'54"E	35.99'
L5	S15°05'10"E	19.24'
L6	N79°24'05"E	39.79'
L7	S80°16'13"E	13.14'
L8	S07°44'36"E	28.82'
L9	S32°38'01"W	23.70'
L10	S26°54'22"W	86.09'
L11	S68°44'24"W	24.79'
L12	S82°36'49"W	50.78'
L13	N65°04'53"W	19.59'
L14	S43°01'21"W	37.92'
L15	S33°29'07"W	22.64'
L16	S38°19'58"E	16.08'
L17	S39°14'49"W	49.57'
L18	S19°19'22"W	48.11'
L19	S60°30'44"W	23.09'
L20	S82°36'30"W	22.57'
L21	S66°51'45"W	41.82'
L22	S57°53'41"W	30.84'
L23	S70°20'13"W	45.27'
L24	S33°11'26"W	34.92'
L25	S51°23'49"W	35.42'
L26	N25°44'22"W	47.60'
L27	N29°58'55"E	64.28'
L28	N25°16'19"E	49.31'
L29	S65°48'51"E	15.20'
L30	S10°37'37"E	17.75'
L31	S56°41'33"E	47.39'
L32	N49°40'05"E	27.19'
L33	S80°53'56"E	20.68'
L34	S68°17'10"E	44.70'
L35	N60°03'09"E	40.86'

SWMP LEGEND:
ECB - EROSION CONTROL
BLANKET
LS - LEVEL SPREADER
SedR - SEDIMENT
RESERVOIR
SCE - STABILIZED
CONSTRUCTION
ENTRANCE
SL - SLASH
ST - SEDIMENT TRAP
TB - TOE BERM
VB - VEGETATED
BUFFER
W - WATTLE
T - TERRACING



APPROXIMATE ACREAGES
APPROX. WELL DISTURBANCE = ±4.216 ACRES
ACCESS ROAD DISTURBANCE = ±0.003 ACRES
PIPELINE DISTURBANCE = ±1.206 ACRES
TOTAL = ±5.425 ACRES

LEGEND:
ST - Septic Tank
G - Generator
WT - Water Tank

UINTAH ENGINEERING & LAND SURVEYING
85 So. 200 East * Vernal, Utah 84078 * (435) 789-1017