

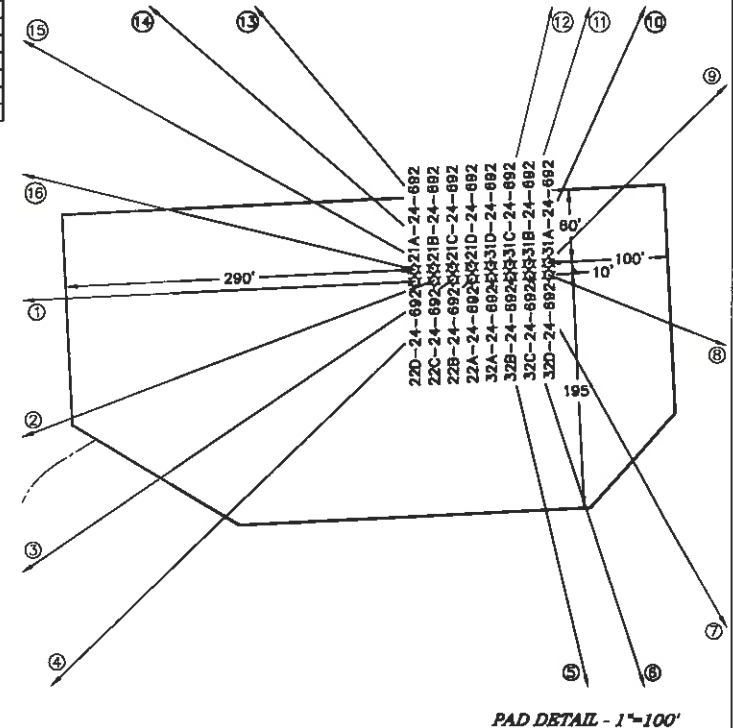
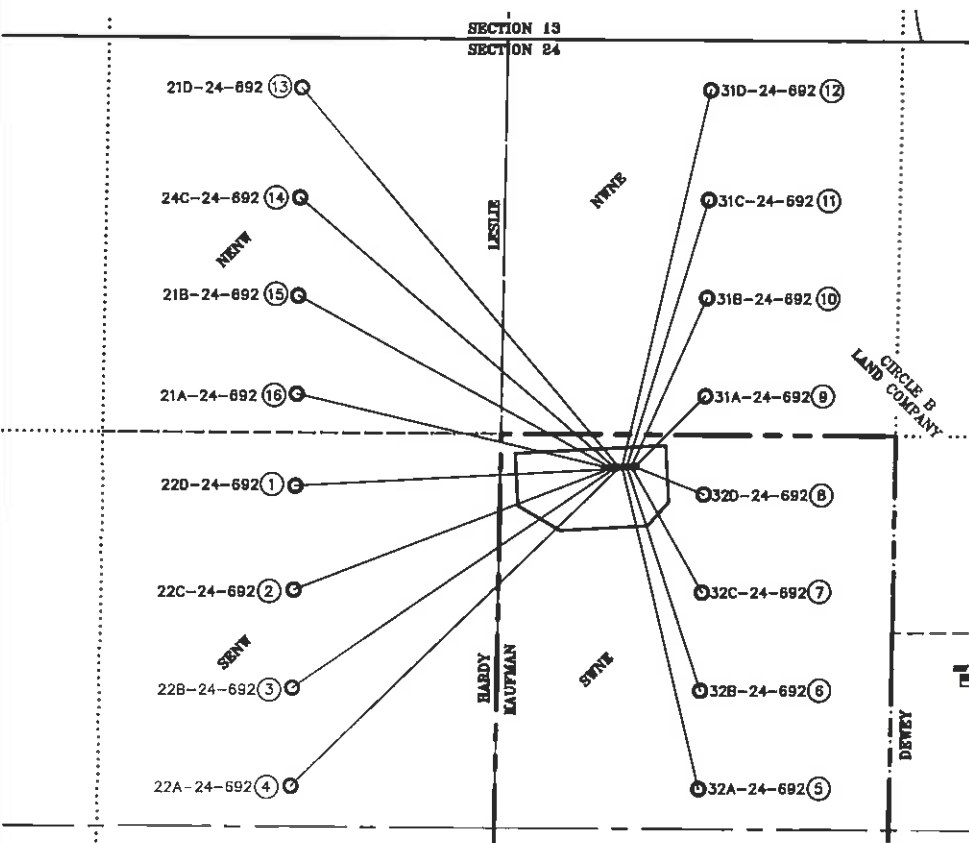
SURFACE HOLE LOCATIONS							BOTTOM HOLE LOCATIONS						
	WELL NAME	PHL	PHL	NORTHING	EASTING	LATITUDE	LONGITUDE	PHL	FEWL	NORTHING	EASTING	LATITUDE	LONGITUDE
1	22D-24-692	1430	2294	1619783.9	2403552.7	39.516030	-107.614351	1489	1958 W	1619783.1	2402531.5	39.515826	-107.617966
2	22C-24-692	1429	2278	1619784.7	2403568.7	39.516034	-107.614295	1835	1958 W	1619387.2	2402526.3	39.514876	-107.617956
3	22B-24-692	1428	2262	1619785.5	2403584.7	39.516037	-107.614238	2161	1958 W	1619061.2	2402521.8	39.513981	-107.617946
4	22A-24-692	1427	2246	1619786.3	2403600.7	39.516040	-107.614182	2487	1958 W	1618735.2	2402516.7	39.513086	-107.617936
5	32A-24-692	1426	2230	1619787.1	2403616.6	39.516043	-107.614125	2490	1958 E	1618720.7	2403870.5	39.513133	-107.613137
6	32B-24-692	1425	2214	1619788.0	2403632.6	39.516047	-107.614069	2163	1958 E	1619047.7	2403876.1	39.514030	-107.613145
7	32C-24-692	1424	2198	1619788.8	2403648.6	39.516050	-107.614012	1837	1958 E	1619373.4	2403881.7	39.514825	-107.613152
8	32D-24-692	1423	2182	1619789.6	2403664.6	39.516053	-107.613955	1510	1958 E	1619700.6	2403887.3	39.515823	-107.613159
9	31A-24-692	1413	2183	1619789.6	2403664.1	39.516051	-107.613958	1182	1958 E	1620028.6	2403892.9	39.516724	-107.613166
10	31B-24-692	1414	2199	1619790.6	2403680.1	39.516077	-107.614014	856	1958 E	1620354.5	2403898.5	39.517619	-107.613173
11	31C-24-692	1415	2215	1619790.0	2403696.1	39.516074	-107.614071	590	1958 E	1620680.3	2403904.1	39.518514	-107.613180
12	31D-24-692	1416	2231	1619791.1	2403712.1	39.516071	-107.614128	165	1958 E	1621006.5	2403910.3	39.519518	-107.613188
13	21D-24-692	1417	2247	1619796.9	2403800.2	39.516068	-107.614184	165	1958 W	1621057.0	2402551.0	39.518481	-107.618008
14	21C-24-692	1418	2263	1619799.9	2403884.2	39.516064	-107.614241	530	1958 W	1620697.1	2402545.6	39.518439	-107.617995
15	21B-24-692	1419	2279	1619794.7	2403568.2	39.516061	-107.614297	856	1958 W	1620366.1	2402540.8	39.517564	-107.617985
16	21A-24-692	1420	2295	1619793.9	2403552.2	39.516058	-107.614354	1182	1958 W	1620040.1	2402536.0	39.516669	-107.617975

WELL INTERFERENCE EXHIBIT

KAUFMAN PAD 6

NAD 83 COLORADO CENTRAL ZONE

SURFACE HOLE LOCATIONS



*NOTE: THE FINISHED PAD ELEVATION IS 5782.5'



ECLIPSE
surveying

111 E. THIRD ST., SUITE 200, RIFLE, CO. 81660
(970) 625-3048

REV. DATE:
SCALE:
DATE:
SHEET:
PROJECT:
DFT:

1" = 400'
05/28/10
1 OF 1
KAUFMAN 6
JAK

Bill Barrett Corporation

SW1/4NE1/4, SECTION 24
T. 6 S., R. 92 W. of the 6th. P.M.
GARFIELD COUNTY, COLORADO