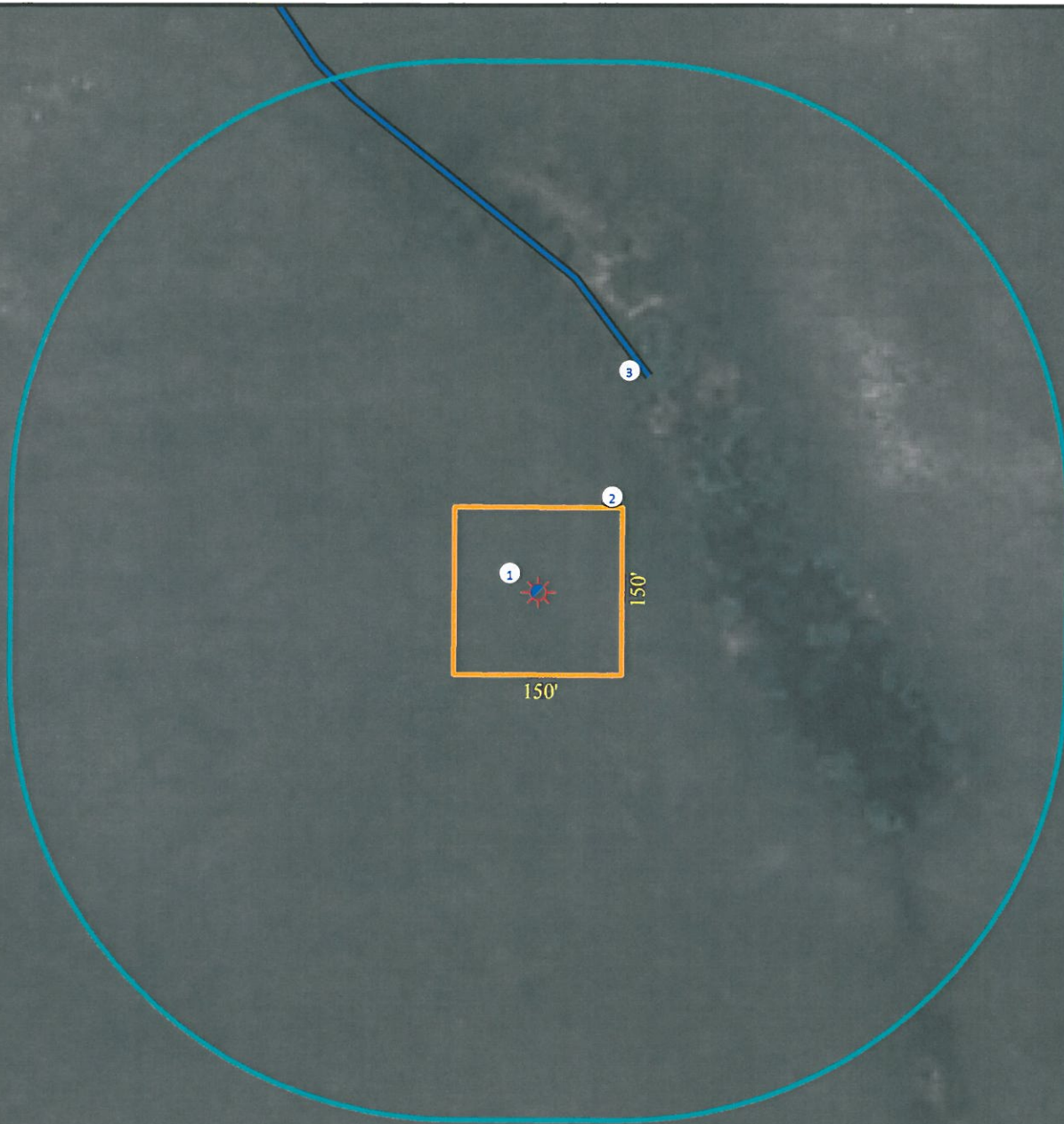


Location Drawing

LETT 44-15 5N46W

SECTION 15, TOWNSHIP 5 NORTH, RANGE 46 WEST OF THE 6TH PRINCIPAL MERIDIAN



1. Proposed Well LETT 44-15 5N46W.
2. Operational Disturbance Area.
3. Intermittent Stream is $\pm 217'$ NE. Feature not Present During Mapping.

Legend

- | | |
|--|---|
|  Proposed Well |  400' Radius |
|  Disturbance Area |  Intermittent Stream |

Reference Location

** All Measurements are Made from Reference Well
LETT 44-15 5N46W (NAD83) **
LAT: 40.397481° LONG: -102.476980°

Surface Use: Open Field



Use our resources to find yours!
www.petro-fs.com
(303) 928-7128

Field Date: 07/22/2010
Drafting Date: 07/26/2010
Drafter: DMM
Checked By: BHF

Data Sources:
- Aerial courtesy of NAIP (2009)
- Colorado Division of Water Resources

Prepared for:

