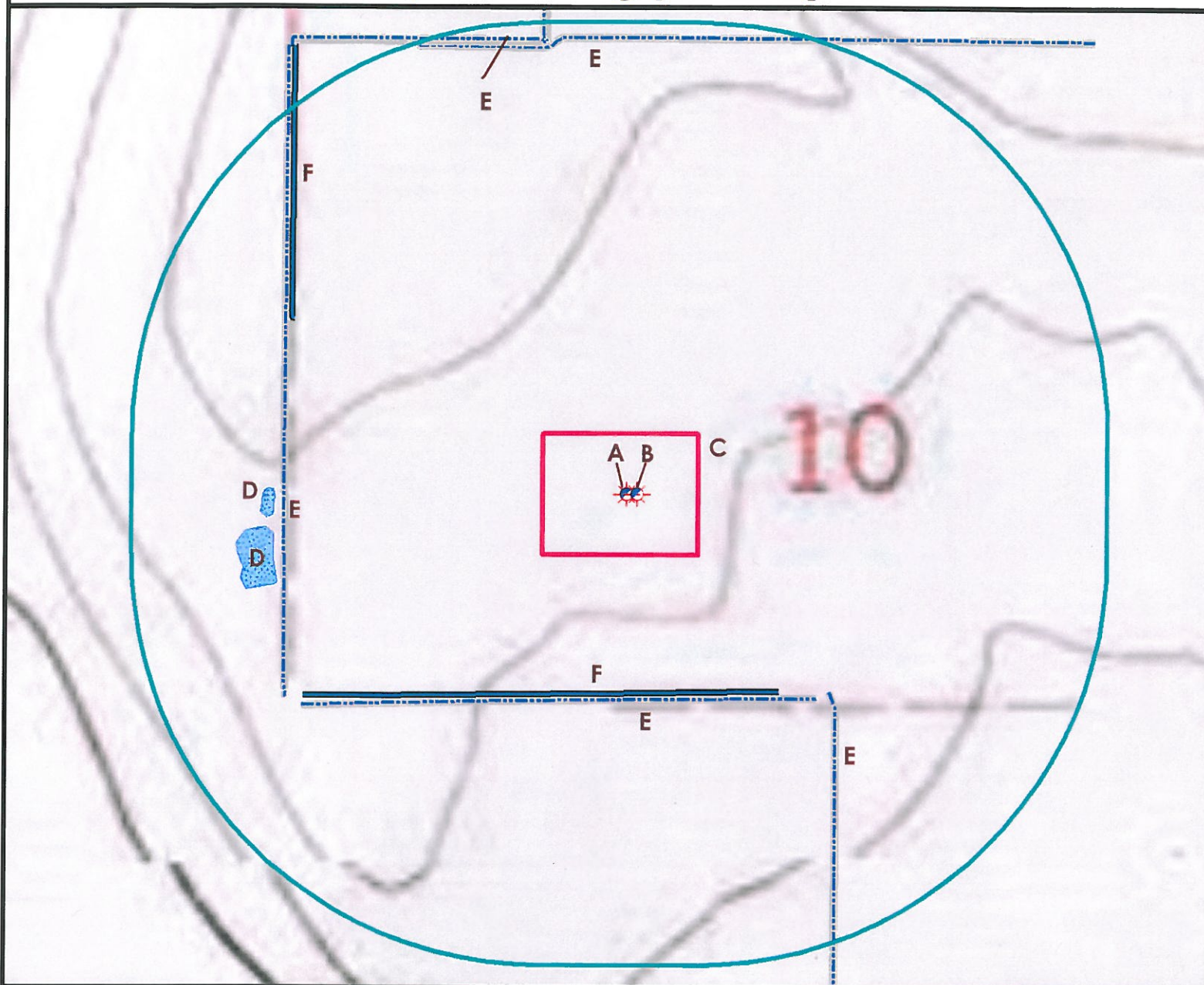
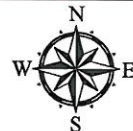


# Hydrology Map



- A. Proposed Well KAISER 6-10.  
 B. Proposed Well KAISER 7-10.  
 C. Operational Disturbance Area.  
 D. The Irrigation Ponds are 880' W and 888' W.  
 E. The Concrete Walled Irrigation Ditches are 508' S, 700' SE, 840' W, 1111' N, and 1141' NW.  
 F. The Dirt Irrigation Ditches are 483' S and 929' NW.



## Legend

- |                      |                      |
|----------------------|----------------------|
| Proposed Well        | Building/Residence   |
| Existing Well        | Disturbance Area     |
| Plugged Well         | Water Body           |
| Water Well           | Utility Box          |
| CattleGuard/Gate     | Railroad             |
| Bridge               | Fence                |
| ECD                  | Overhead Power Line  |
| 1000' Radius         | Pipeline             |
| Facilities Enclosure | Access Road          |
|                      | Ditch/Canal          |
|                      | Concrete Ditch/Canal |

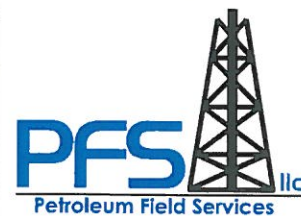
## 1000ft Radius Map of Surface Water and Riparian Areas

### KAISER 6-10 Pad Multi Well Pad

Surface Location: T6N R65W S10

Field Date: 05/05/2010  
 Drawing Date: 06/09/2010  
 Drafter: KLM  
 Checked By: BHF

Prepared for:  
**BAYSWATER**  
 E & P, LLC



Use our resources to find yours!  
[www.petro-fs.com](http://www.petro-fs.com)

1801 W. 13th Ave Suite 207  
 Denver, CO 80204  
 (303) 928-7128  
 111 E. Third Street  
 Rifle, CO 81650  
 (970) 625-4740