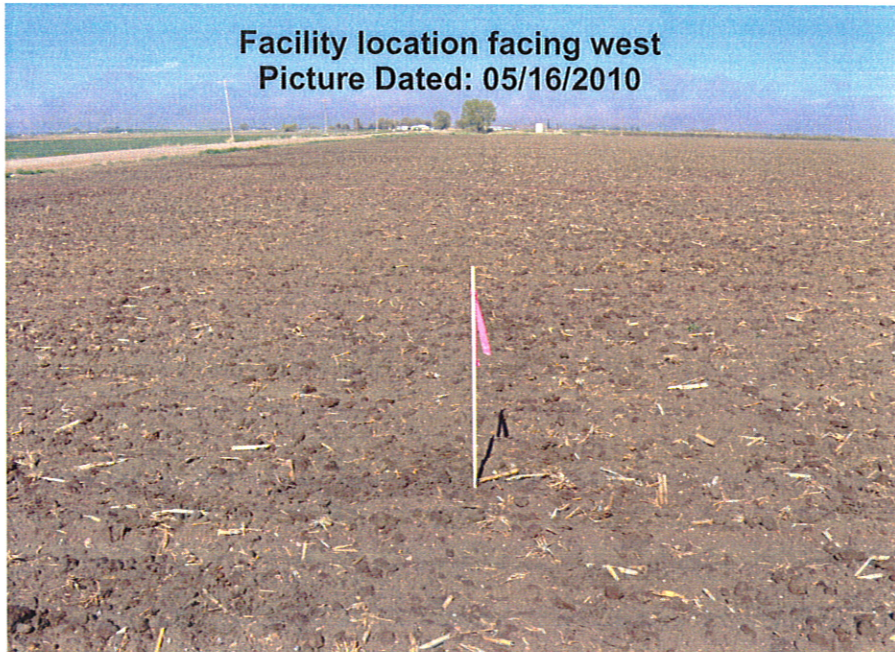


ROTHE BB30-23
Township 5 North, Range 63 West
Section 30: SW/4SE/4
Weld County, Colorado

Facility location facing east
Picture Dated: 05/16/2010



Facility location facing west
Picture Dated: 05/16/2010



ROTHE BB30-23
Township 5 North, Range 63 West
Section 30: SW/4SE/4
Weld County, Colorado

Facility location facing north
Picture Dated: 05/16/2010



Facility location facing south
Picture Dated: 05/16/2010

