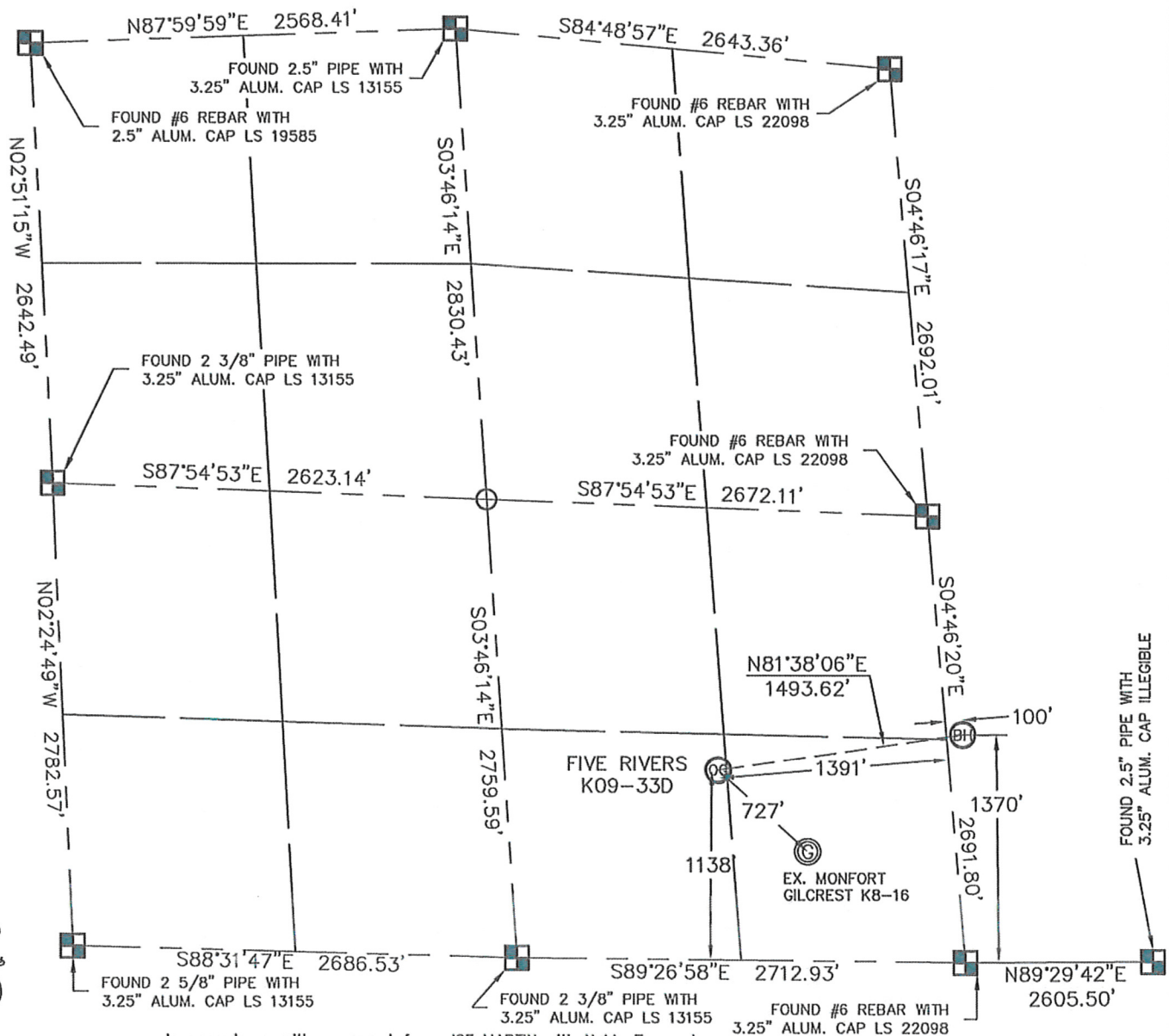


WELL LOCATION CERTIFICATE

THIS MAP DOES NOT REPRESENT A BOUNDARY SURVEY

SECTION: 8
TOWNSHIP: 4N
RANGE: 66WIn accordance with a request from JOE MARTIN with Noble Energy Inc.

King Surveyors Inc. has determined the surface location of the FIVE RIVERS K09-33D to be 1138' from the SOUTH line and 1391' from the EAST line as measured at right angles from the section line of Section 8 and the bottom hole to be 1370' from the SOUTH line and 100' from the WEST line of Section 9, Township 4 North, Range 66 West of the Sixth Principal Meridian, County of Weld, State of Colorado.

I hereby state that this Well Location Certificate was prepared by me, or under my direct supervision, that the fieldwork was completed on 3-1-10, for and on behalf of Noble Energy Inc. That this is not a Land Survey Plat or an Improvement Survey Plat, and that it is not to be relied upon for establishment of fence, building, or other future improvement lines.

NOTE:

- 1) Bearings shown are Grid Bearings of the Colorado State Plane Coordinate System, North Zone, North American Datum 1983/2007. The lineal dimensions as contained herein are based upon the "U.S. Survey Foot."
- 2) Ground elevations are based on an observed GPS elevation (NAVD 1988 DATUM).
- 3) NEAREST EXISTING WELL: MONFORT GILCREST K8-16 727'
- 4) IMPROVEMENTS: See VISIBLE IMPROVEMENTS exhibit for all visible improvements within 400' of well head.
- 5) SURFACE USE: PASTURE

SURFACE LOCATION

LATITUDE: 40.32211°N
LONGITUDE: 104.79728°W
PDOP: 1.4
ELEV: 4703

1/4, 1/4: SW1/4SE1/4

NEAREST PROPERTY LINE: 219' NORTH

BOTTOM HOLE

LATITUDE: 40.32267°N
LONGITUDE: 104.79198°W

NOTE

According to Colorado law, you must commence any legal action based upon any defect in this W.L.C. within three years after you discover such defect. In no event, may any action based upon any defect in this survey be commenced more than ten years after the date of the certificate shown hereon. (13-80-105 C.R.S.)

LEGEND



= ALIQUOT MONUMENT AS DESCRIBED



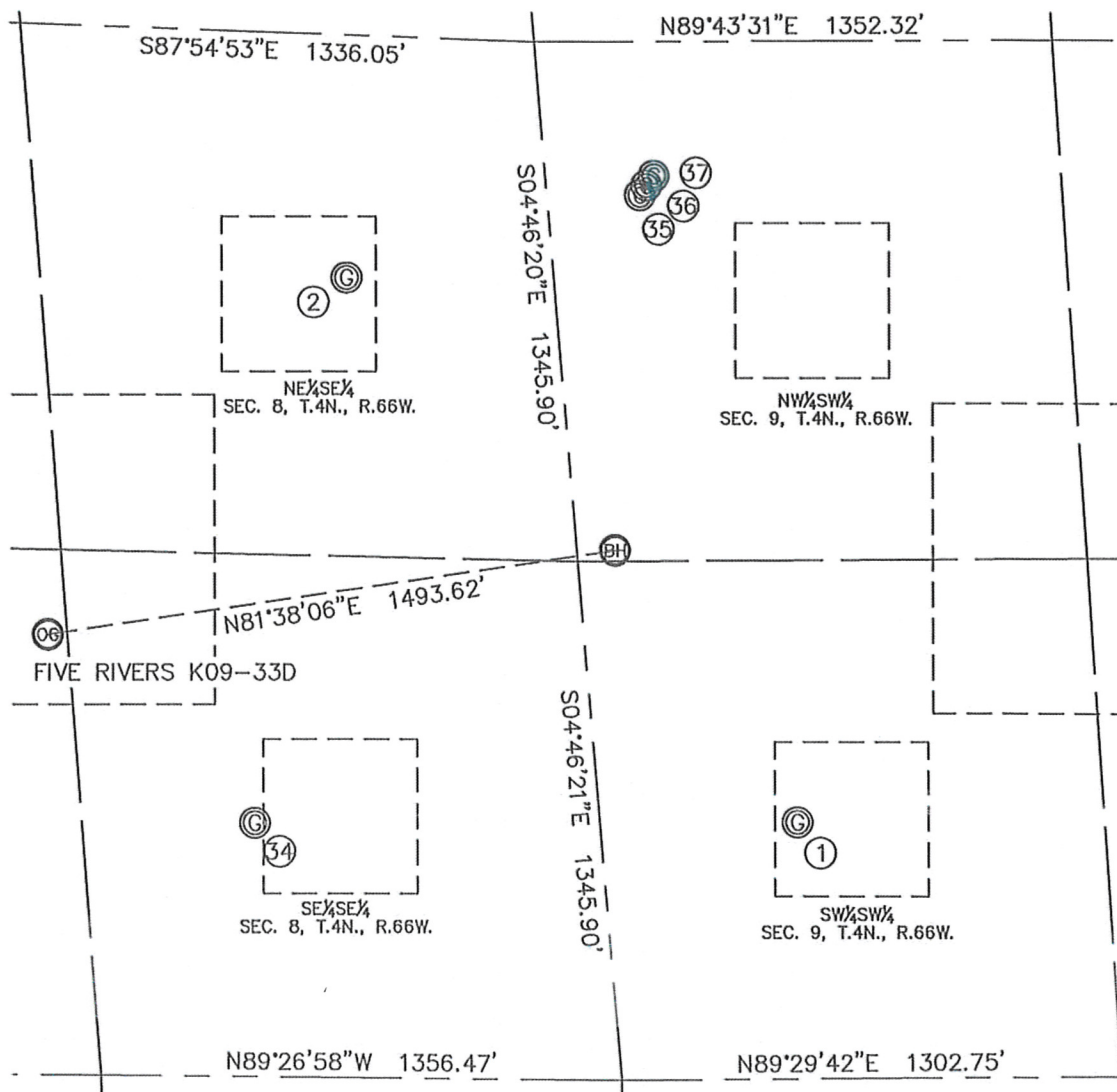
= CALCULATED POSITION

Steven A. Lund on behalf of King Surveyors, Inc.
Licensed Land Surveyor, No. 34995
State of Colorado

PROJECT#: 2010055

SITE SKETCH

SECTION: 8
TOWNSHIP: 4N
RANGE: 66W



①

MONFORT GILCREST K 9-13
SW1/4SW1/4
662' FSL
514' FWL
LAT-40.32073°N
LONG-104.79030°W
PDOP: 1.9
ELEV: 4733'

②

MONFORT GILCREST K 8-9
NE1/4SE1/4
2067' FSL
538' FEL
LAT-40.32462°N
LONG-104.79446°W
PDOP: 1.7
ELEV: 4700'

③

MONFORT GILCREST K8-16
SE1/4SE1/4
655' FSL
895' FEL
LAT-40.32076°N
LONG-104.79537°W
PDOP: 1.7
ELEV: 4703'

④

UPRC 9-1416
NW1/4SW1/4
2286' FSL
243' FWL
LAT-40.32519°N
LONG-104.79171°W
PDOP: 1.9
ELEV: 4700'

⑤

UPRC 9-1216
NW1/4SW1/4
2311' FSL
261' FWL
LAT-40.32526°N
LONG-104.79165°W
PDOP: 1.9
ELEV: 4701'

⑥

UPRC 9-1116
NW1/4SW1/4
2336' FSL
283' FWL
LAT-40.32532°N
LONG-104.79158°W
PDOP: 1.9
ELEV: 4700'

