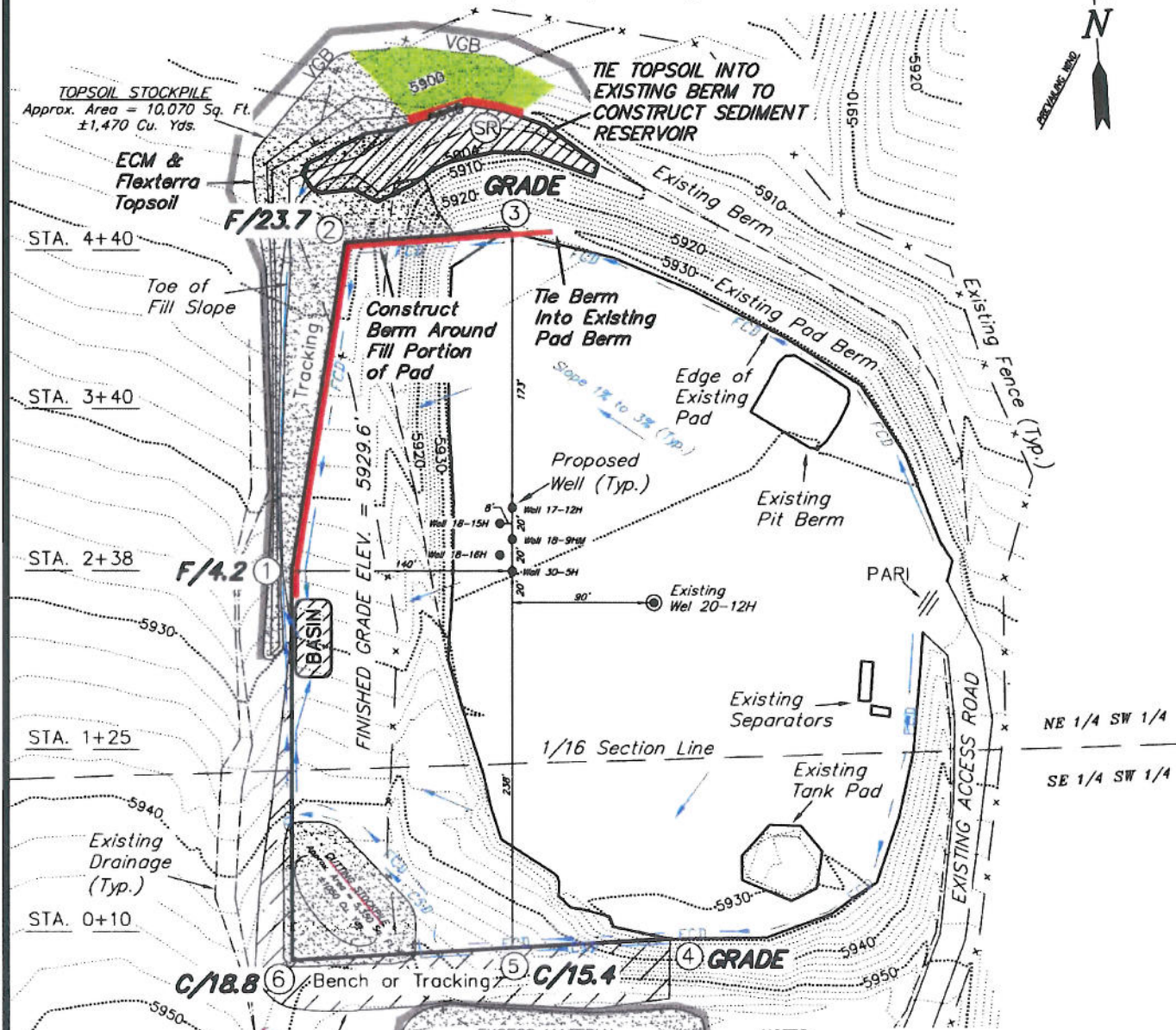


ENCANA OIL & GAS (USA) INC

CONSTRUCTION LAYOUT DRAWING

WELL PAD (K200U) EXPANSION

Section 20, T8S, R96W, 6th P.M.



LEGEND:

- PARI = PAD/ACCESS ROAD INTERFACE
- SR = SEDIMENT RESERVOIR
- ST = SEDIMENT TRAP
- R.O.P. = RUN-ON PROTECTION
- = PERIMETER CONTROL (WATTLES)
- CDM = CHECK DAM
- FCD = FLOW CONTROL DITCH
- ECB = EROSION CONTROL BLANKET
- D = FILL DIVERSION TO SEDIMENT TRAP
- CSD = CUT SLOPE DIVERSION (BERM TOE OF CUT SLOPE)
- VGB = VEGETATION BUFFER (UNDISTURBED LAND INSIDE PC)
- SEED, ECB & FLEX = SEED, ECB & FLEX
- = LEVEL SPREADER

NOTE:

The topsoil & waste material area is calculated as being mounds containing 3,440 cubic yards of dirt (a 15% fluff factor is included). The mound areas are calculated with push slopes of 2.5:1 and fall slopes of 2.5:1.

NOTES:

- (1) Slope Track and/or Terrace All Slopes and Piles
- (2) Erosion Control & Seed Topsoil Stockpile
- (3) Erosion Control & Seed Outside Slopes of Stockpiles
- (4) Slope away from Substructure Areas 1% to 3% to Flow Control Ditch on Entire Pad
- (5) When Possible the Cut and Fill Slopes Directly Behind the Proposed Production Equipment Should be Reclaimed with 3:1 Slopes and Topsoil Spread During Pad Construction.
- (6) BMP Selection and Position may Change Depending on Actual Conditions Encountered During the Construction Process.
- (7) All CMP's Shall have Inlet and Outlet Protection.
- (8) All BMP's to be constructed to EnCana Oil & Gas (USA) Inc. BMP Manual's Specifications.

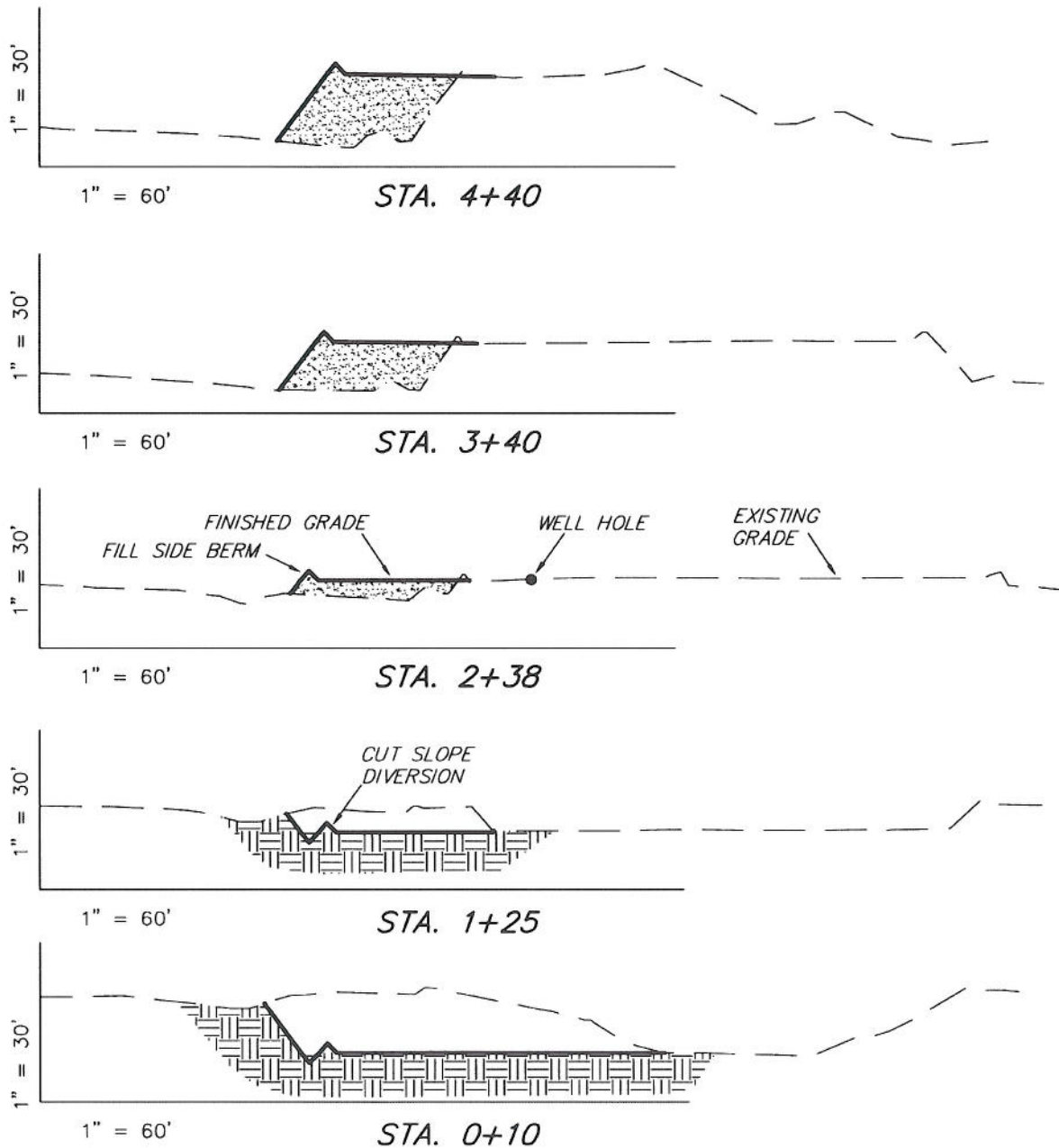
SURVEYED BY: C.D.S.	DATE SURVEYED: 05-21-10
DRAWN BY: R.V.C.	DATE DRAWN: 05-20-10
SCALE: 1" = 100'	REVISED: L.C.S. 06-28-10

Tri State
Land Surveying, Inc.
180 NORTH VERNAL AVE. VERNAL, UTAH 84078
(435) 781-2501

ENCANA OIL & GAS (USA) INC

CROSS SECTIONS

WELL PAD (K200U) EXPANSION Section 20, T8S, R96W, 6th P.M.



NOTE:
UNLESS OTHERWISE NOTED
ALL CUT/FILL SLOPES ARE
AT 1.5:1

ESTIMATED EARTHWORK QUANTITIES (No Shrink or swell adjustments have been used) (Expressed in Cubic Yards)

ITEM	CUT	FILL	EXCESS	6" TOPSOIL
PAD	11,480	9,770	1,710	Topsoil is not included in Pad Cut
TOTALS	11,480	9,770	1,710	1,280

SURVEYED BY: C.D.S. DATE SURVEYED: 05-21-10
DRAWN BY: R.V.C. DATE DRAWN: 05-20-10
SCALE: 1" = 100' REVISED: L.C.S. 06-28-10

Tri State
Land Surveying, Inc.
180 NORTH VERNAL AVE. VERNAL, UTAH 84078
(435) 781-2501

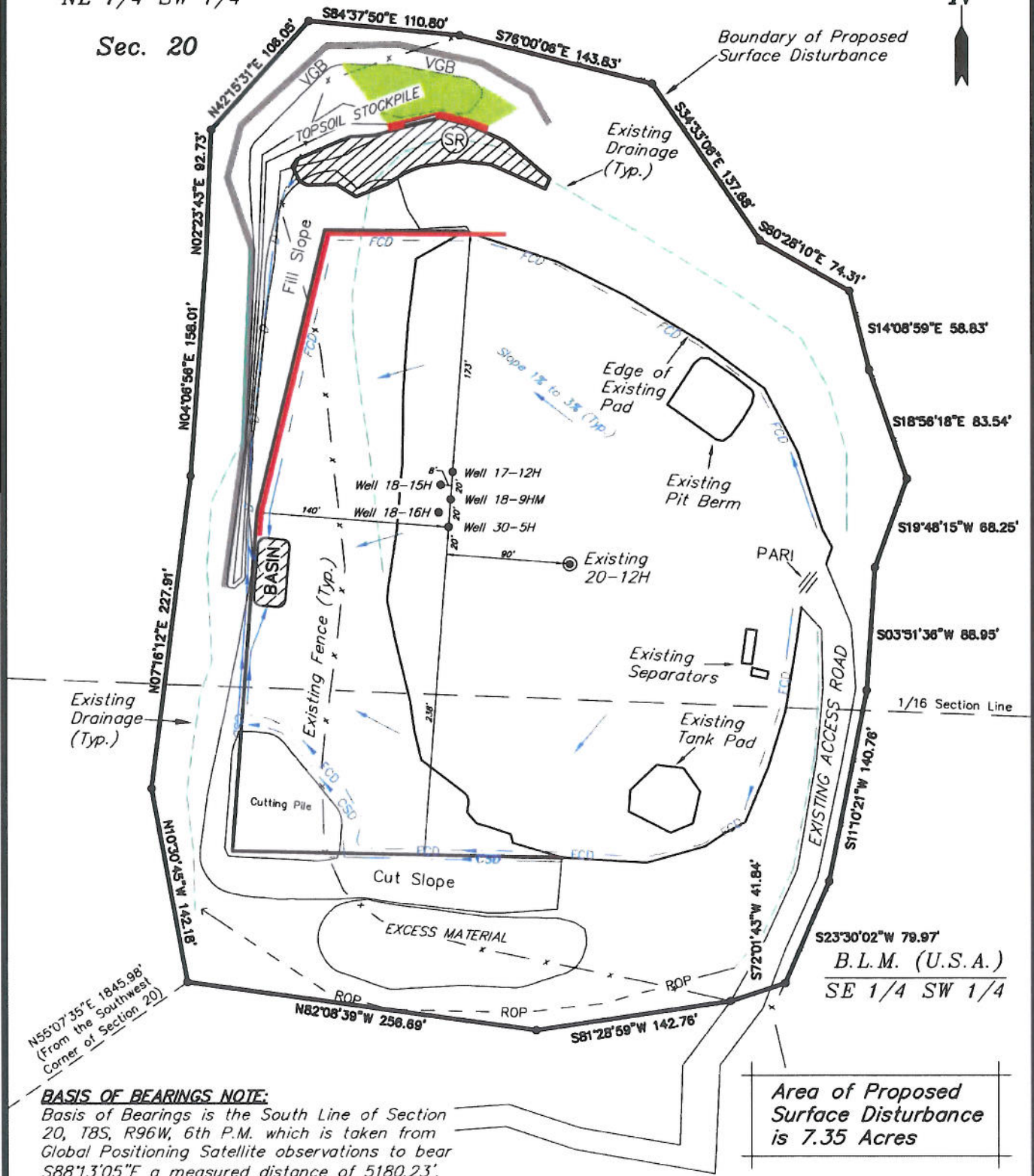
SHEET
5
OF 11

ENCANA OIL & GAS (USA) INC

SURFACE DISTURBANCE AREA WELL PAD (K200U) EXPANSION Section 20, T8S, R96W, 6th P.M.

B.L.M. (U.S.A.)
NE 1/4 SW 1/4

Sec. 20



BASIS OF BEARINGS NOTE:

Basis of Bearings is the South Line of Section 20, T8S, R96W, 6th P.M. which is taken from Global Positioning Satellite observations to bear S88°13'05"E a measured distance of 5180.23'.

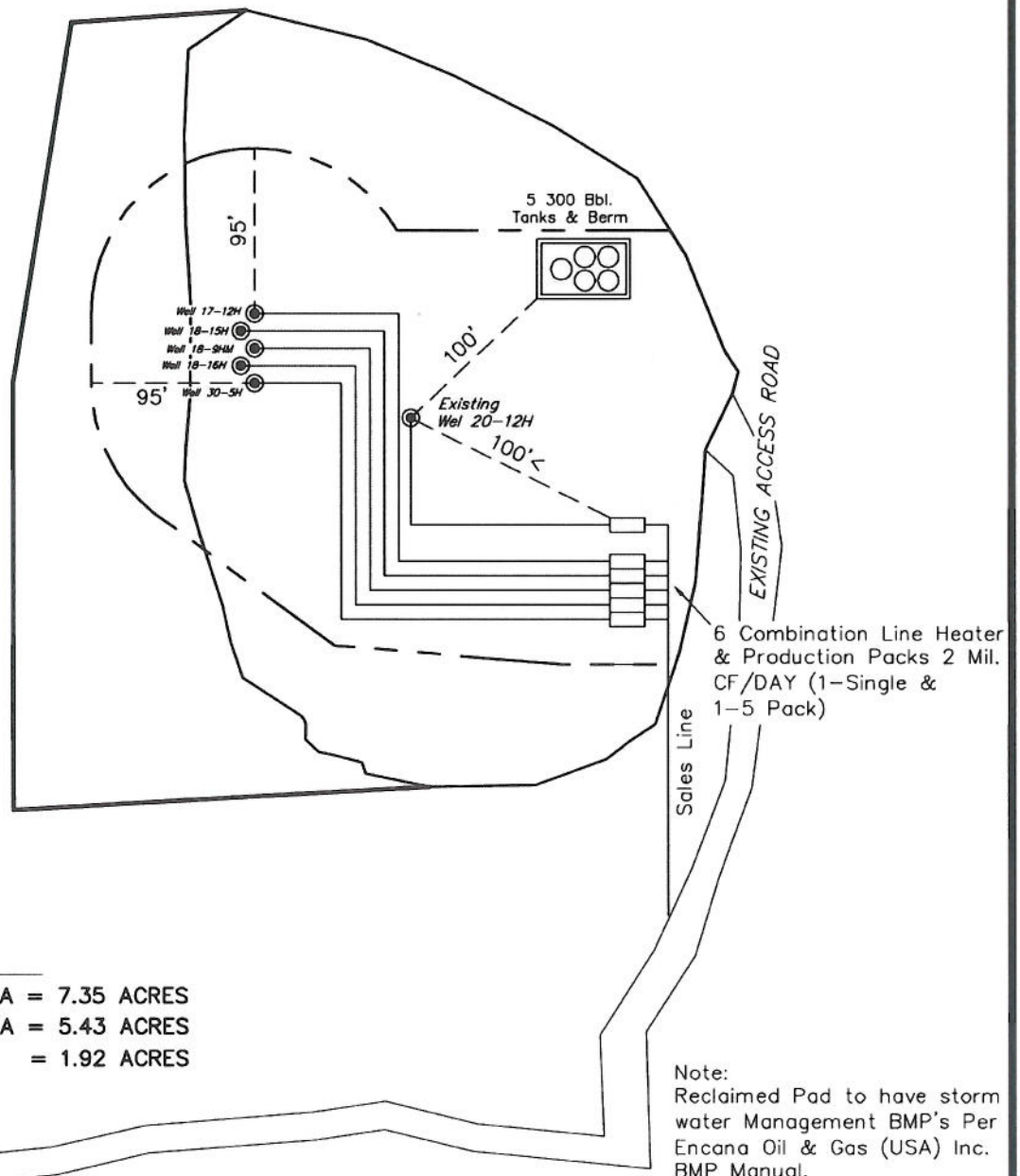
SURVEYED BY: C.D.S. DATE SURVEYED: 05-21-10
DRAWN BY: D.COX DATE DRAWN: 10-24-06
SCALE: 1" = 100' REVISED: L.C.S. 06-28-10

Tri State
Land Surveying, Inc.
180 NORTH VERNAL AVE. VERNAL, UTAH 84078
(435) 781-2501

SHEET
8
OF 11

ENCANA OIL & GAS (USA) INC

PRODUCTION SCHEMATIC WELL PAD (K200U) EXPANSION Section 20, T8S, R96W, 6th P.M.



DISTURBED AREA:

TOTAL DISTURBED AREA = 7.35 ACRES

TOTAL RECLAIMED AREA = 5.43 ACRES

UNRECLAIMED AREA = 1.92 ACRES

Note:
Actual Equipment Layout and
Reclaimed Pad Surface Area
May Change do to Production
Requirements or Site Conditions.

Note:
Reclaimed Pad to have storm
water Management BMP's Per
Encana Oil & Gas (USA) Inc.
BMP Manual.

SURVEYED BY: C.D.S.	DATE SURVEYED: 05-21-10
DRAWN BY: L.C.S.	DATE DRAWN: 06-28-10
SCALE: 1" = 100'	REVISED:

Tri State
Land Surveying, Inc.
(435) 781-2501
180 NORTH VERNAL AVE. VERNAL, UTAH 84078

SHEET
7
OF 11