



PHOTO LOCATION: LATITUDE LONGITUDE
NAD 83: (38° 56' 55.31"N) (108° 20' 45.57"W)

CAMERA ANGLE: NORTH

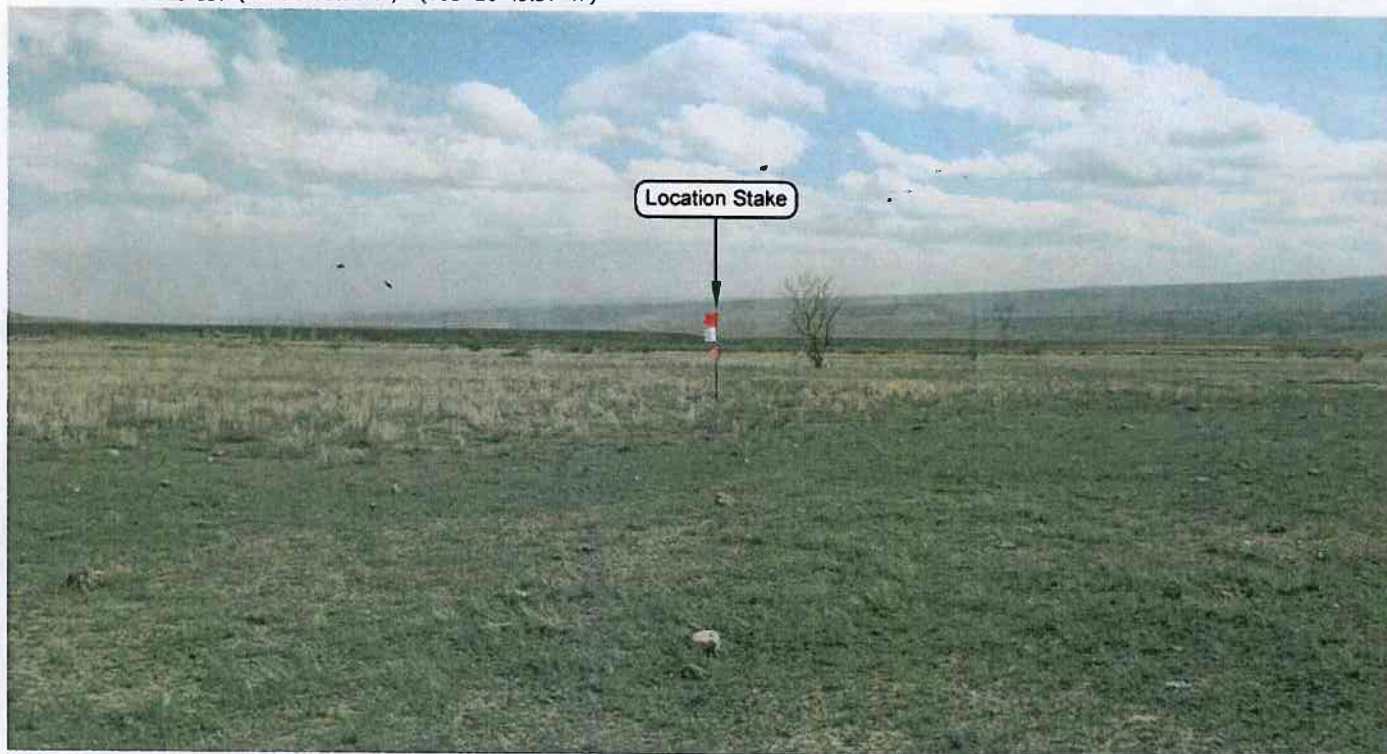


PHOTO LOCATION: LATITUDE LONGITUDE
NAD 83: (38° 56' 57.48"N) (108° 20' 45.56"W)

CAMERA ANGLE: SOUTH

FRAM OPERATING, LLC

LOCATION PHOTOS

AZCARRAGA 26-3
671' FSL, 649' FWL
SW ¼ SW ¼ OF SECTION 26, T2S, R2E,
UTE P.M., MESA COUNTY, COLORADO.

TIMBERLINE

(435) 789-1365

ENGINEERING & LAND SURVEYING, INC.
209 NORTH 300 WEST - VERNAL, UTAH 84078

DATE PHOTOS TAKEN:
06-14-10

PHOTOS TAKEN BY: D.J.S.

DATE DRAWN:
06-15-10

DRAWN BY: M.W.W.

Date Last Revised:

SHEET

1

OF 14

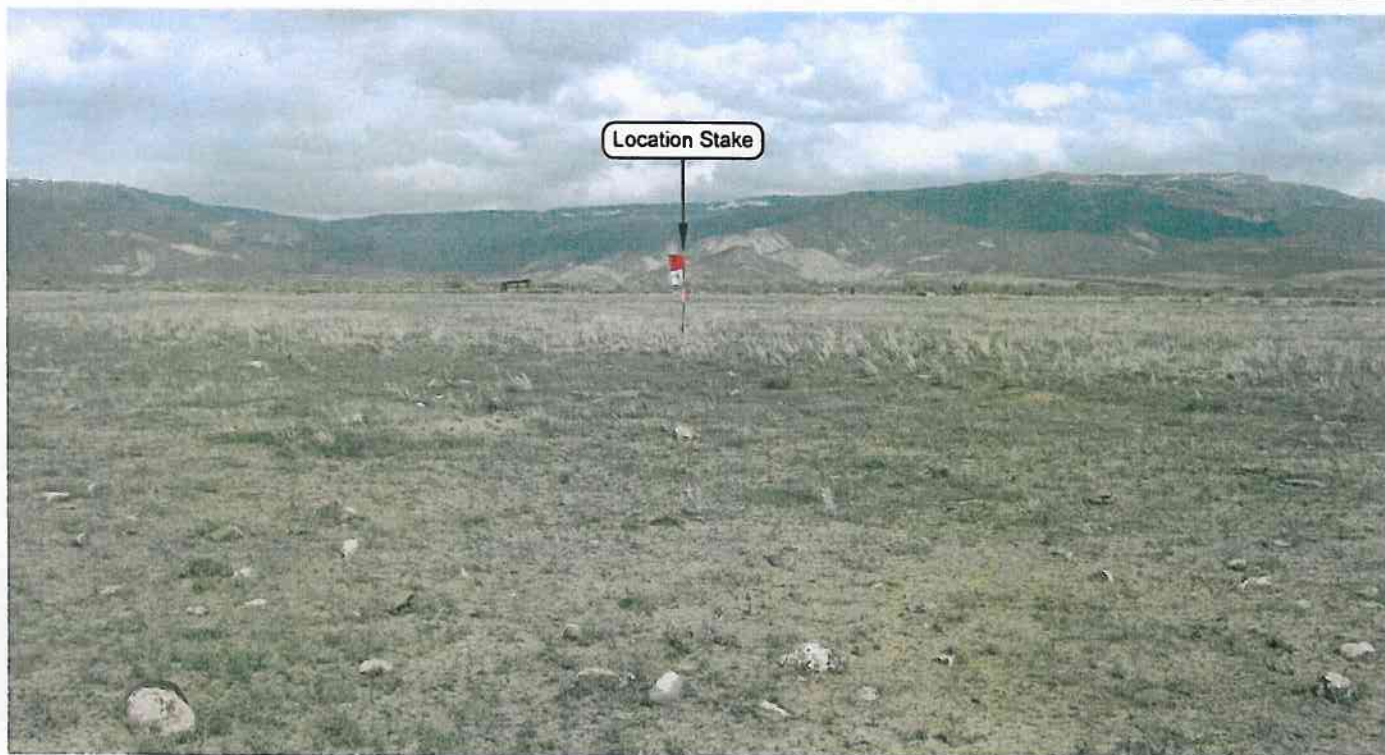


PHOTO LOCATION: LATITUDE LONGITUDE
 NAD 83: (38° 56' 56.33"N) (108° 20' 47.03"W)

CAMERA ANGLE: EAST



PHOTO LOCATION: LATITUDE LONGITUDE
 NAD 83: (38° 56' 56.33"N) (108° 20' 44.02"W)

CAMERA ANGLE: WEST

FRAM OPERATING, LLC

LOCATION PHOTOS

AZCARRAGA 26-3
671' FSL, 649' FWL
SW $\frac{1}{4}$ SW $\frac{1}{4}$ OF SECTION 26, T2S, R2E,
UTE P.M., MESA COUNTY, COLORADO.

TIMBERLINE

(435) 789-1365

ENGINEERING & LAND SURVEYING, INC.
 209 NORTH 300 WEST - VERNAL, UTAH 84078

DATE PHOTOS TAKEN:
 06-14-10

PHOTOS TAKEN BY: D.J.S.

DATE DRAWN:
 06-15-10

DRAWN BY: M.W.W.

Date Last Revised:

SHEET

2

OF 14