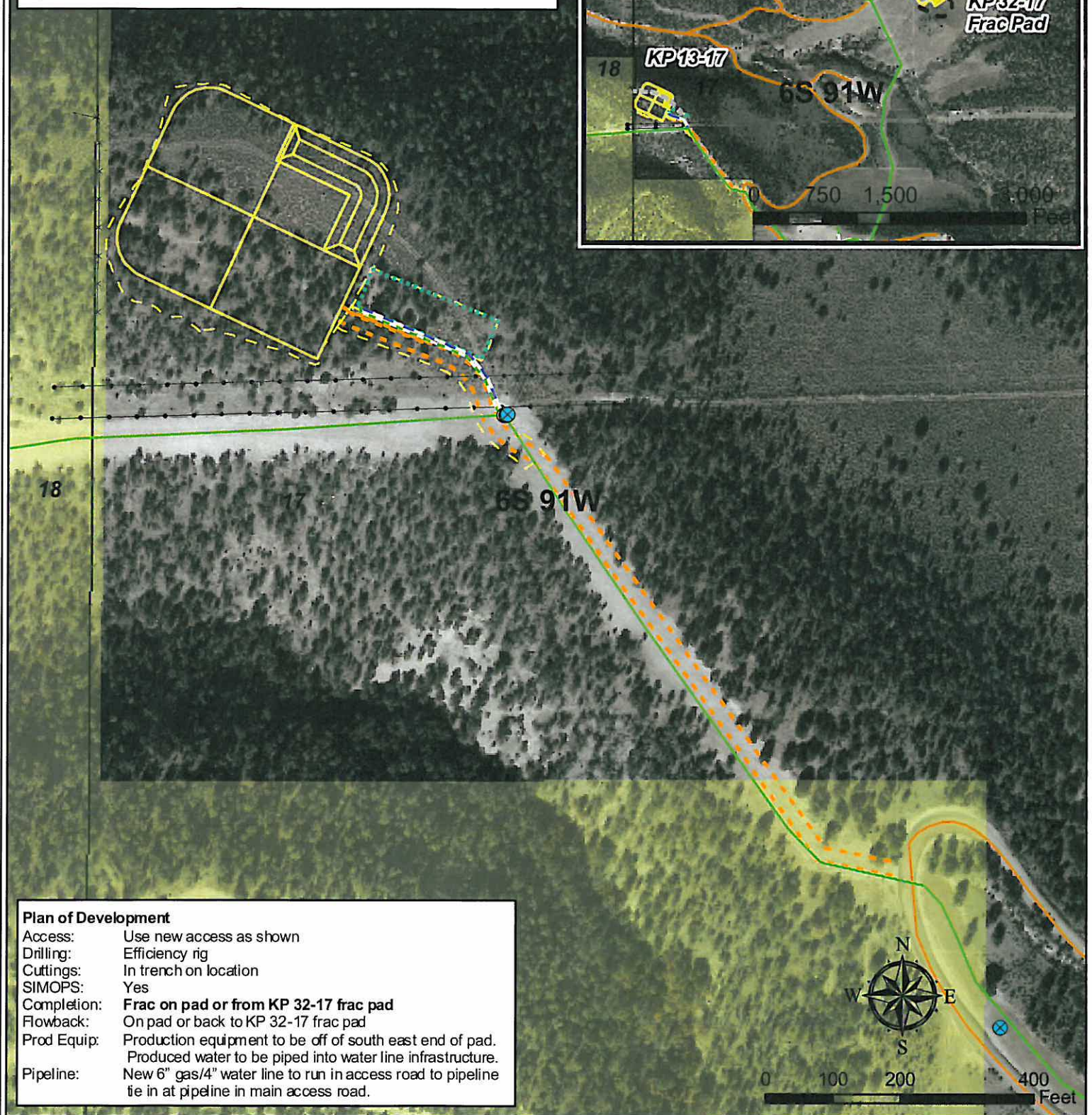
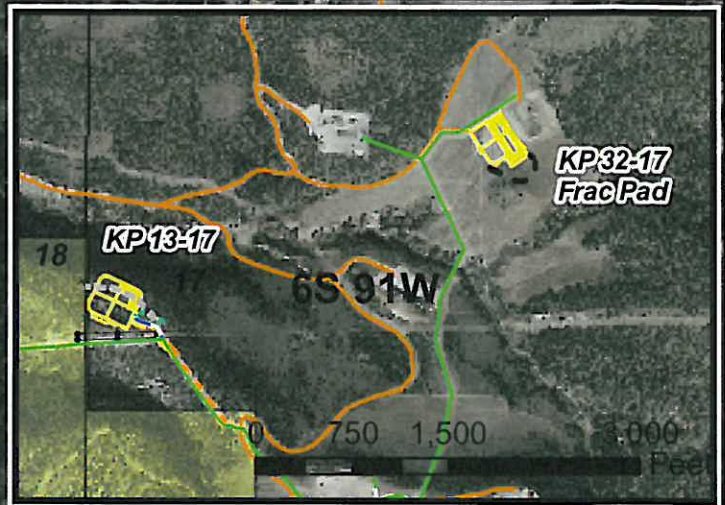


Geologist Information

General: New location, 14 new wells (drill 4 first)
Ownership: Jolley surface/ Split minerals
SUA Status: Have
Spacing Units: 3 spacing units – N/2 sec. 17, S/2 sec. 17, Sec. 18 (unspaced)
Adjacent Owners: BLM



Plan of Development

Access: Use new access as shown
Drilling: Efficiency rig
Cuttings: In trench on location
SIMOPS: Yes
Completion: **Frac on pad or from KP 32-17 frac pad**
Flowback: On pad or back to KP 32-17 frac pad
Prod Equip: Production equipment to be off of south east end of pad.
Produced water to be piped into water line infrastructure.
Pipeline: New 6" gas/4" water line to run in access road to pipeline tie in at pipeline in main access road.

Legend

- | | |
|-----------------------------|------------------------------------|
| Future | Existing Road |
| Future | Proposed Production Equipment Area |
| Proposed Water Line | Proposed Daylight Line |
| Pipeline (Valley) | Proposed Pad or Pit |
| Pipeline (Valley, Proposed) | Existing Overhead Electric |
| Proposed Road | Existing Fence |
| | BLM |

Williams Production RMT

KP 13-17 Plan of Development
T6S R 91W, Section 17

July 20, 2010

