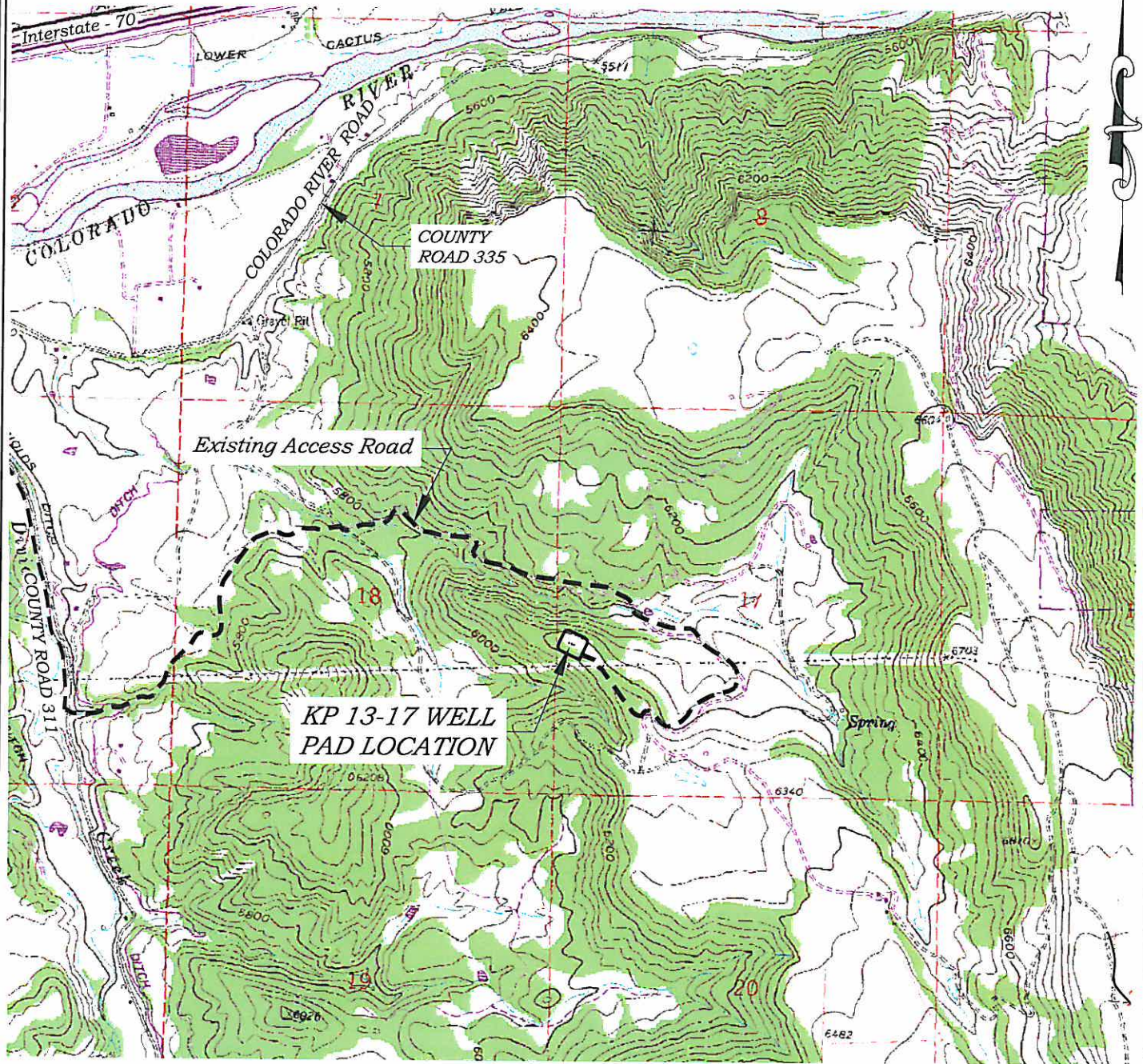


Section 17  
T. 6 S., R 91 W



1000 0 2000  
GRAPHIC SCALE IN FEET  
1 INCH = 2000 FEET

**ACCESS DESCRIPTION:**

FROM THE INTERSECTION OF COLORADO INTERSTATE 70 OVERPASS (Exit 97) AND RIVER FRONTAGE ROAD SOUTH OF SILT, COLORADO, PROCEED EAST  $\pm 0.4$  MILES ALONG RIVER FRONTAGE ROAD TO THE INTERSECTION WITH COUNTY ROAD 311 (DIVIDE CREEK ROAD), PROCEED ALONG DIVIDE CREEK ROAD  $\pm 3.3$  MILES TO THE INTERSECTION WITH A DIRT/GRAVEL ROAD (McLin Cutoff), PROCEED LEFT IN AN EASTERLY DIRECTION  $\pm 1.0$  MILES TO A FOUR-WAY INTERSECTION, PROCEED STRAIGHT AND THEN RIGHT IN AN EASTERLY DIRECTION  $\pm 1.6$  MILES TO AN INTERSECTION WITH A DIRT/GRAVEL ROAD, PROCEED LEFT IN A NORTHWESTERLY DIRECTION  $\pm 0.2$  MILES TO THE KP 13-17 DRILL PAD LOCATION, AS SHOWN HEREON.

REVISED: 7/20/10

136 East Third Street  
Rifle, Colorado 81650  
Ph: (970) 625-1330  
Fax: (970) 625-2773



**BOOKCLIFF**  
Survey Services, Inc.

SCALE: 1" = 2000'  
DATE: 6/25/10  
PLAT: 5 of 9  
PROJECT: Williams KP  
DFT: cws

**Construction Plan Prepared for:**  
**Williams.** Williams Production, RMT

KP 13-17 Drill Pad - Plat 5  
ACCESS ROAD MAP