

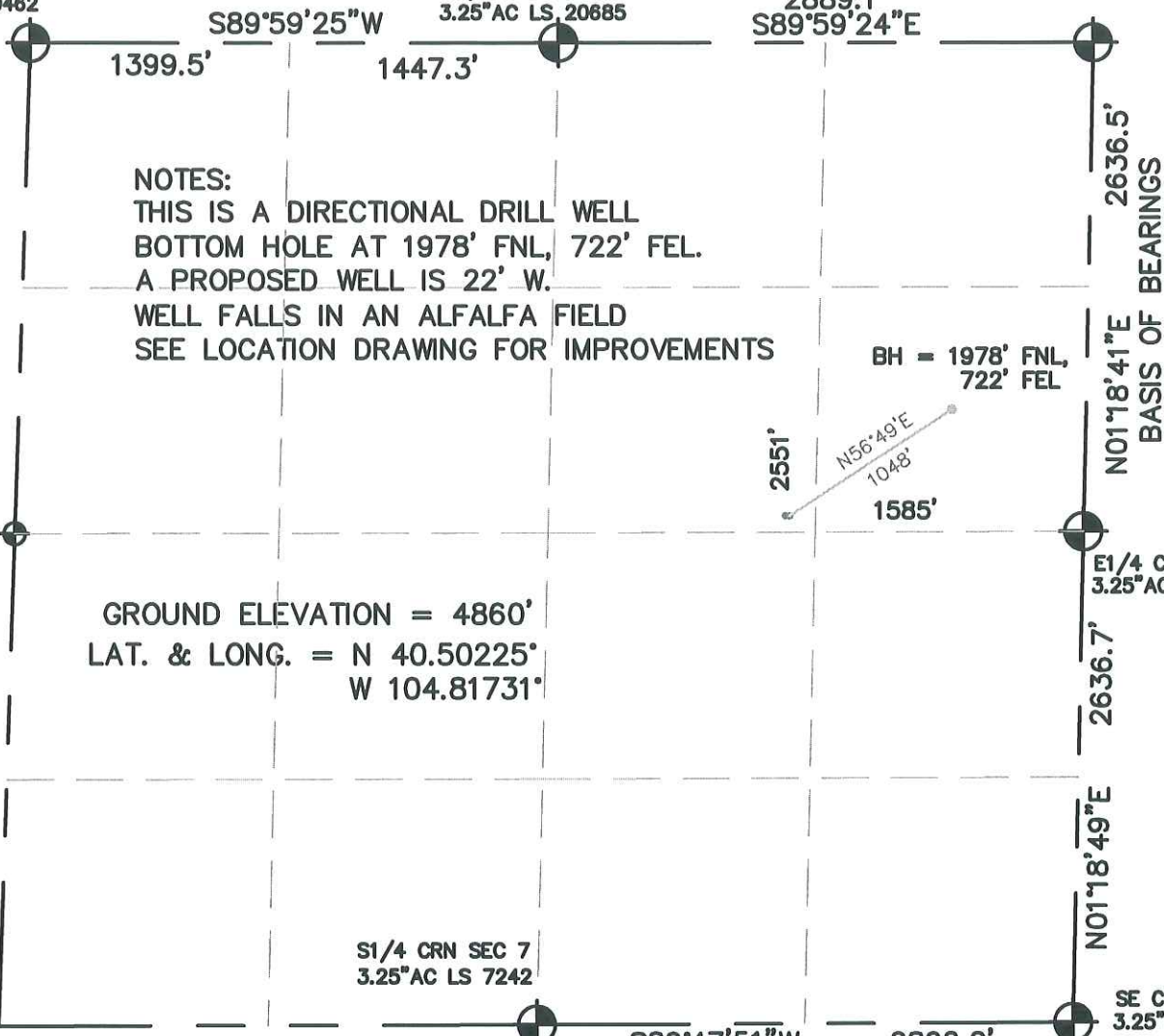
WELL LOCATION CERTIFICATE

SECTION 7, TOWNSHIP 6 NORTH, RANGE 66 WEST, 6TH P.M.

NW CRN SEC. 7
3.25°AC LS 30462

N1/4 CRN SEC 7
3.25°AC LS 20685

NE CRN SEC 7
3.25°AC LS 20685



NOTES:

THIS IS A DIRECTIONAL DRILL WELL
BOTTOM HOLE AT 1978' FNL, 722' FEL.
A PROPOSED WELL IS 22' W.
WELL FALLS IN AN ALFALFA FIELD
SEE LOCATION DRAWING FOR IMPROVEMENTS

GROUND ELEVATION = 4860'
LAT. & LONG. = N 40.50225°
W 104.81731°

BH = 1978' FNL,
722' FEL

2551'
N56°49'E
1048'

1585'

2636.5'
N01°18'41"E
BASIS OF BEARINGS

E1/4 CRN SEC. 7
3.25°AC LS 16154

2636.7'

N01°18'49"E

S1/4 CRN SEC 7
3.25°AC LS 7242




S89°47'51"W

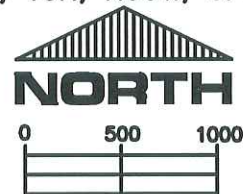
2892.2'

SE CRN SEC 7
3.25°AC LS 16154

I HEREBY STATE TO PETROLEUM DEVELOPMENT CORP. THAT THIS WELL LOCATION CERTIFICATE FOR THE WELL SCHAEFER 42-7D IS LOCATED 2551' FNL & 1585' FEL, SEC. 7, T6N, R66W, 6PM.

LEGEND

-  = FOUND MONUMENT
-  = PROPOSED WELL
-  = BOTTOM HOLE



SCALE 1" = 1000'

ELEVATION SOURCE = USGS 7.5' QUAD.MAP CONTOURS
NGVD 1929 DATUM.

LAT. & LONG. ARE DIFFERENTIALLY CORRECTED (NAD'83)
USING (DGPS) WITH (PDOP) VALUES LESS THAN SIX (6).

SHOWN DISTANCES ARE FIELD MEASURED - EXTERIOR SECTION LINES
ARE DRAWN TO SCALE (BEST APPROX. OR FOUND MONUMENT ).

DISTANCES TO WELL SHOWN PERPENDICULAR
TO SECTION LINES.

THOMAS G. CARLSON, PLS 24657
HORSESHOE SURVEYING, LLC

THIS IS NOT A MONUMENTED BOUNDARY SURVEY, IT IS ONLY A
DRAWING INTENDED TO DEPICT THE WELL LOCATION TO SECTION LINES.

PREPARED BY: HORSESHOE SURVEYING, LLC PO BOX 150458 LAKEWOOD, CO 80215 (720)872-0196		WELL NAME: SCHAEFER 42-7D	
DRAWING DATE: 4-29-10		LOCATION: WELD COUNTY, CO NE1/4, SEC. 7, T6N, R66W, 6TH P.M.	
FIELD DATE: 4-27-10	BY: TGC	CHKD:	JOB NO. SHEET NO. 1 OF 1

