

ENSIGN

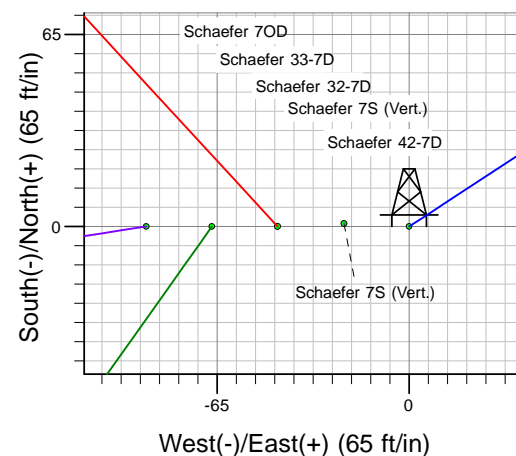
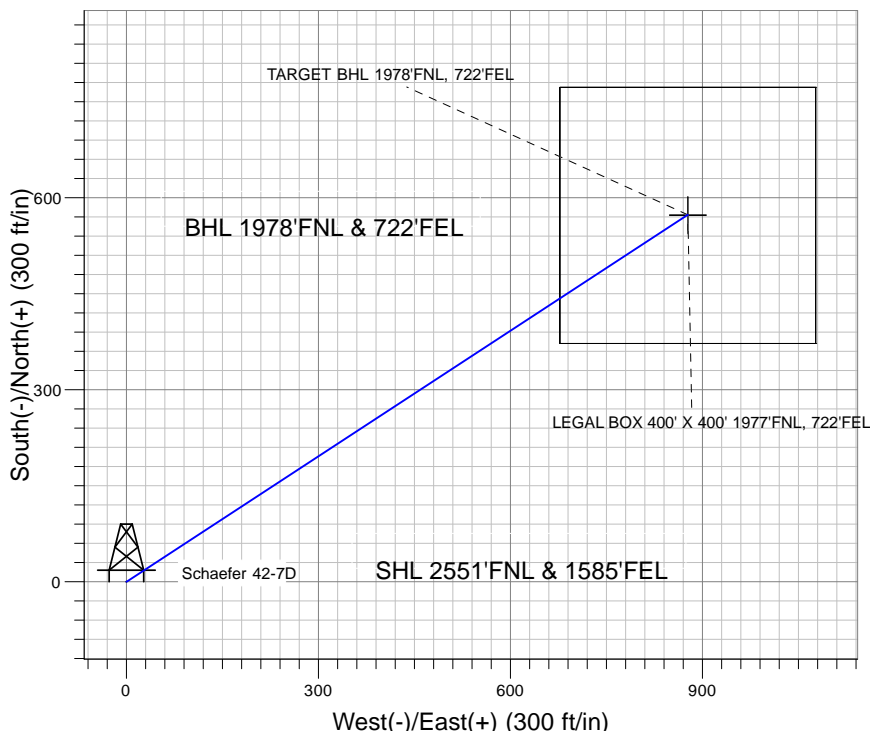
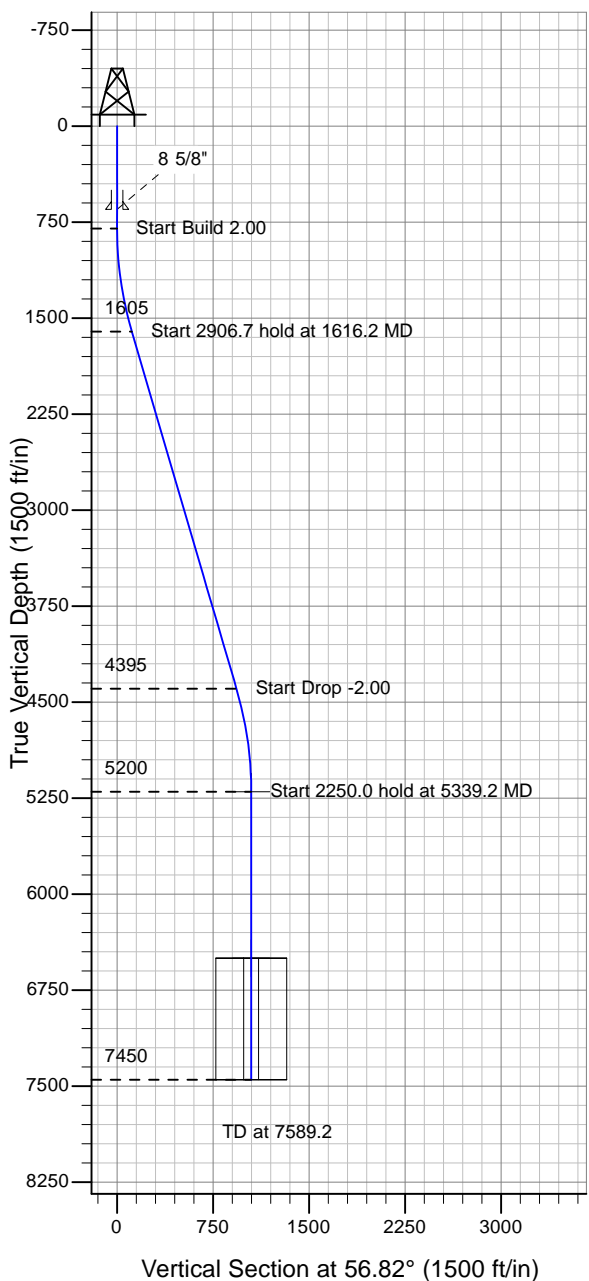
Directional

Well Name: Schaefer 42-7D

Surface Location: Schaefer 42-7D Pad Sec.7-T6N-R66W
 North American Datum 1983 , US State Plane 1983 , Colorado Northern Zone
 Ground Elevation: 4860.0

+N/-S+E/-W Northing Easting Latitude Longitude Slot
 0.0 0.0 1426540.98 3189847.58 40° 30' 8.100 N 104° 49' 2.316 W
 Original Well Elev WELL @ 4873.0ft (Original Well Elev)

PETROLEUM DEVELOPMENT CORP Weld County CO



Schaefer 42-7D Pad Sec.7-T6N-R66W
 Schaefer 42-7D
 Plan #1 (5-28-10)
 17:17, June 01 2010



Azimuths to True North
 Magnetic North: 9.04°

Magnetic Field
 Strength: 53289.8snT
 Dip Angle: 67.16°
 Date: 5/28/2010
 Model: IGRF2010

WELLBORE TARGET DETAILS (LAT/LONG)

Name	TVD	+N/-S	+E/-W	Latitude	Longitude	Shape
TARGET BHL 1978'FNL, 722'FEL	5200.0	573.5	877.1	40° 30' 13.767 N	104° 48' 50.961 W	Point
LEGAL BOX 400' X 400' 1977'FNL, 722'FEL	6500.0	572.5	877.1	40° 30' 13.757 N	104° 48' 50.962 W	Rectangle (Sides: L400.0 W400.0)

SECTION DETAILS

Sec	MD	Inc	Azi	TVD	+N/-S	+E/-W	DLeg	TFace	VSec	Target
1	0.0	0.00	0.00	0.0	0.0	0.0	0.00	0.00	0.0	
2	800.0	0.00	0.00	800.0	0.0	0.0	0.00	0.00	0.0	
3	1616.2	16.32	56.82	1605.2	63.2	96.7	2.00	56.82	115.5	
4	4523.0	16.32	56.82	4394.8	510.3	780.5	0.00	0.00	932.5	
5	5339.2	0.00	0.00	5200.0	573.5	877.1	2.00	180.00	1048.0	TARGET BHL 1978'FNL, 722'FEL
6	7589.2	0.00	0.00	7450.0	573.5	877.1	0.00	0.00	1048.0	