

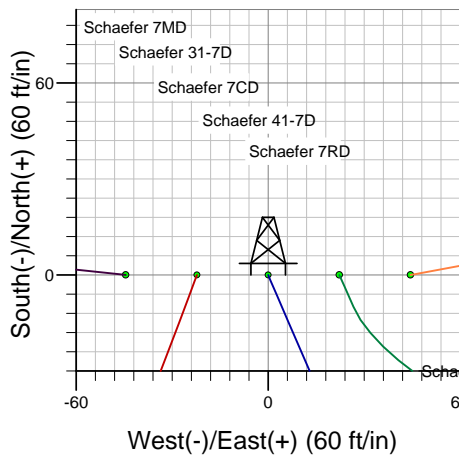
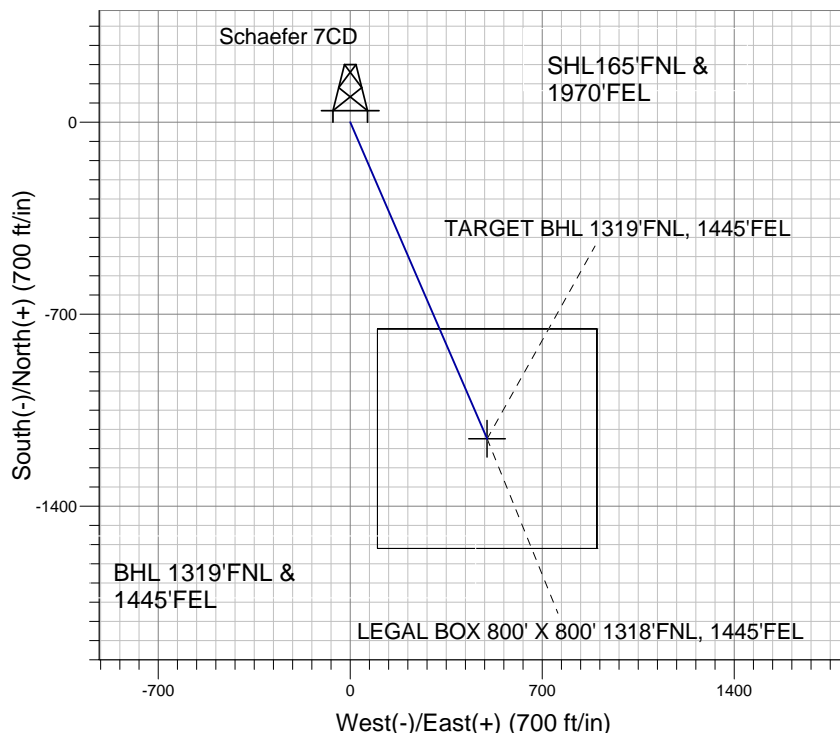
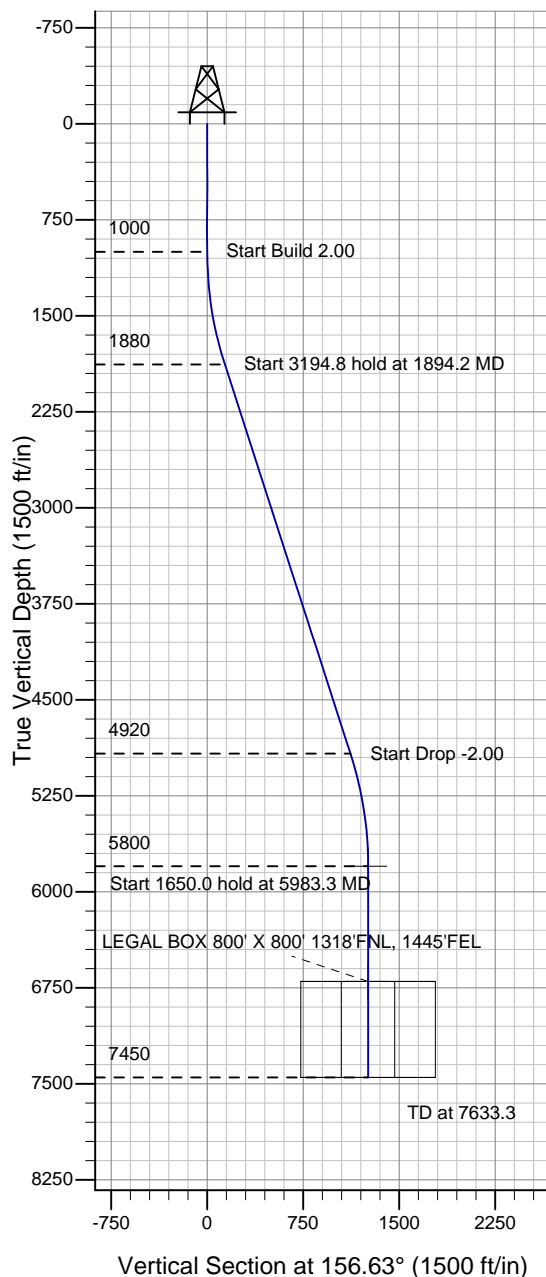
### Well Name: Schaefer 7CD

Surface Location: Schaefer 7MD Pad Sec.7-T6N-R66W  
North American Datum 1983 , US State Plane 1983 , Colorado Northern Zone

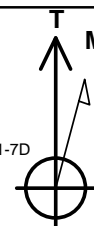
Ground Elevation: 4880.0

+N/-S +E/-W Northing Easting Latitude Longitude Slot  
0.0 0.0 1428909.44 3189426.14 40° 30' 31.536 N 104° 49' 7.536 W  
Original Well Elev WELL @ 4893.0ft (Original Well Elev)

### PETROLEUM DEVELOPMENT CORP Weld County CO



Schaefer 7CD  
Plan #1 (6-2-10)  
13:35, June 02 2010



Azimuths to True North  
Magnetic North: 9.04°  
Magnetic Field  
Strength: 53291.4snT  
Dip Angle: 67.17°  
Date: 6/2/2010  
Model: IGRF2010

#### WELLBORE TARGET DETAILS (LAT/LONG)

Name	TVD	+N/-S	+E/-W	Latitude	Longitude	Shape
TARGET BHL 1319'FNL, 1445'FEL	5800.0	-1154.8	499.0	40° 30' 20.125 N	104° 49' 1.076 W	Point
LEGAL BOX 800' X 800' 1318'FNL, 1445'FEL	6700.0	-1153.8	499.0	40° 30' 20.135 N	104° 49' 1.076 W	Rectangle (Sides: L800.0 W800.0)

#### SECTION DETAILS

Sec	MD	Inc	Azi	TVD	+N/-S	+E/-W	DLeg	TFace	VSec	Target
1	0.0	0.00	0.00	0.0	0.0	0.0	0.00	0.00	0.0	
2	1000.0	0.00	0.00	1000.0	0.0	0.0	0.00	0.00	0.0	
3	1894.2	17.88	156.63	1879.8	-127.1	54.9	2.00	156.63	138.4	
4	5089.1	17.88	156.63	4920.2	-1027.7	444.1	0.00	0.00	1119.6	
5	5983.3	0.00	0.00	5800.0	-1154.8	499.0	2.00	180.00	1258.0	TARGET BHL 1319'FNL, 1445'FEL
6	7633.3	0.00	0.00	7450.0	-1154.8	499.0	0.00	0.00	1258.0	