



August 6, 2010

Department of Natural Resources  
Oil and Gas Conservation Commission  
The Chancery Building  
1120 Lincoln St., Suite 801  
Denver, CO 80203

Re: **20 Day Certification Letter - 318A-e**  
WILDFLOWER 37-27  
Township 2 North, Range 68 West, Section 27: NE/4SE/4  
Unit Spacing: 02N-68W-27 S/2SE; 02N-68W-34 N/2NE  
Weld County, Colorado

Ladies/Gentlemen:

Kerr-McGee Oil and Gas Onshore LP ("KMG") hereby certifies to the Director that a twenty (20) day notice has been given by certified mail to all owners in the proposed wellbore spacing unit. We have not received any objections to such well location, proposed spacing unit, or additional producing formation. KMG hereby requests the Director to approve the boundary well.

If you have any questions or issues regarding this permit, please contact Cheryl Light at (720) 929-6461.

Very truly yours,

**KERR-McGEE OIL AND GAS ONSHORE LP**

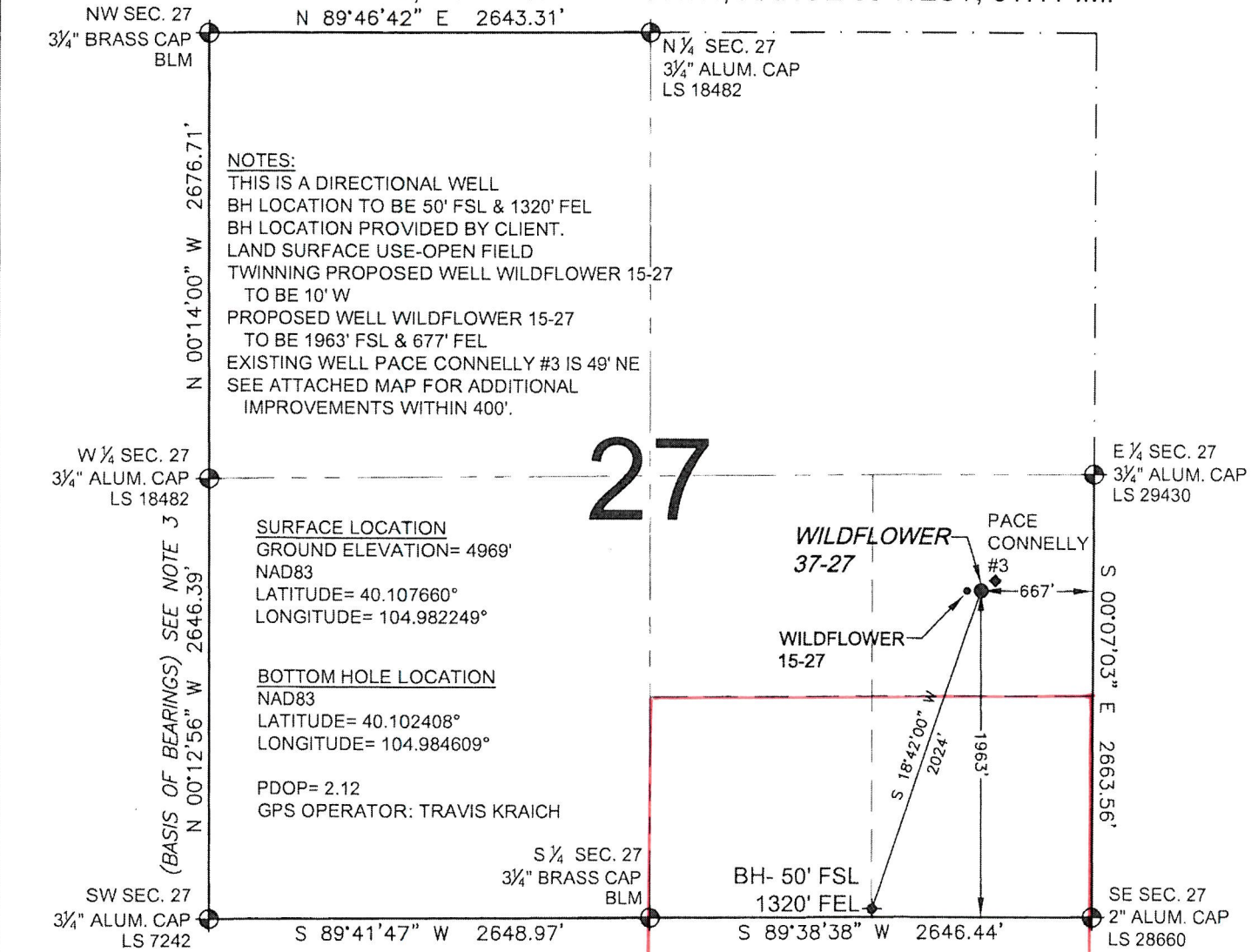
A handwritten signature in blue ink, appearing to read 'Rebecca Heim'.

**Rebecca Heim**  
**Regulatory Analyst II**

Enclosure

# WELL LOCATION CERTIFICATE: WILDFLOWER 37-27

SECTION 27, TOWNSHIP 2 NORTH, RANGE 68 WEST, 6TH P.M.



**SURFACE LOCATION**  
GROUND ELEVATION= 4969'  
NAD83  
LATITUDE= 40.107660°  
LONGITUDE= 104.982249°

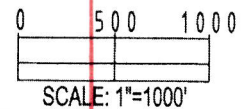
**BOTTOM HOLE LOCATION**  
NAD83  
LATITUDE= 40.102408°  
LONGITUDE= 104.984609°

PDOP= 2.12  
GPS OPERATOR: TRAVIS KRAICH

WELL **WILDFLOWER 37-27** TO BE LOCATED 1963' FSL AND 667' FEL, SECTION 27, T2N, R68W OF THE 6th P.M.

## LEGEND

- ⊙ = EXISTING MONUMENT
- ⊕ = PROPOSED WELL
- ⬢ = BOTTOM HOLE
- ⬢ = EXISTING WELL
- BH = BOTTOM HOLE



## NOTES:

- THIS SURVEY WAS DONE BY GPS METHODS AND CONFORMS TO THE MINIMUM STANDARDS SET BY THE C.O.G.C.C., RULE NO. 215
- ELEVATIONS SHOWN AT THE WELL HEAD, AS WELL AS HORIZONTAL CONTROL, ARE BASED ON GPS-RTK VALUES DERIVED FROM DOING 2-HOUR STATIC GPS SESSIONS AND REDUCTIONS USING O.P.U.S. SOLUTIONS.  
VERTICAL = NAVD88; HORIZONTAL = NAD83/92
- THE BEARINGS SHOWN HEREON ARE BASED ON GPS OBSERVATIONS BETWEEN THE MONUMENTS SHOWN HEREON AS FOUND ON THE FIELD DATE BELOW.
- DISTANCES SHOWN ARE AT GROUND LEVEL, AS MEASURED IN THE FIELD, WITH TIES TO WELLS MEASURED AT A PERPENDICULAR TO SECTION LINES.

I, JERRY F. HARCEK JR., A LICENSED PROFESSIONAL LAND SURVEYOR IN THE STATE OF COLORADO DO HEREBY CERTIFY TO **KERR-MCGEE OIL & GAS ONSHORE LP**, THAT THE SURVEY AND WELL LOCATION CERTIFICATE SHOWN HEREON WERE DONE BY ME OR UNDER MY DIRECT SUPERVISION AND THAT THE DRAWING SHOWN HEREON ACCURATELY DEPICTS THE PROPOSED LOCATION OF THE WELL **WILDFLOWER 37-27**. THIS CERTIFICATE DOES NOT REPRESENT A LAND SURVEY PLAT OR IMPROVEMENT SURVEY PLAT AS DEFINED BY C.R.S. 38-51-102 AND CANNOT BE RELIED UPON TO DETERMINE OWNERSHIP.

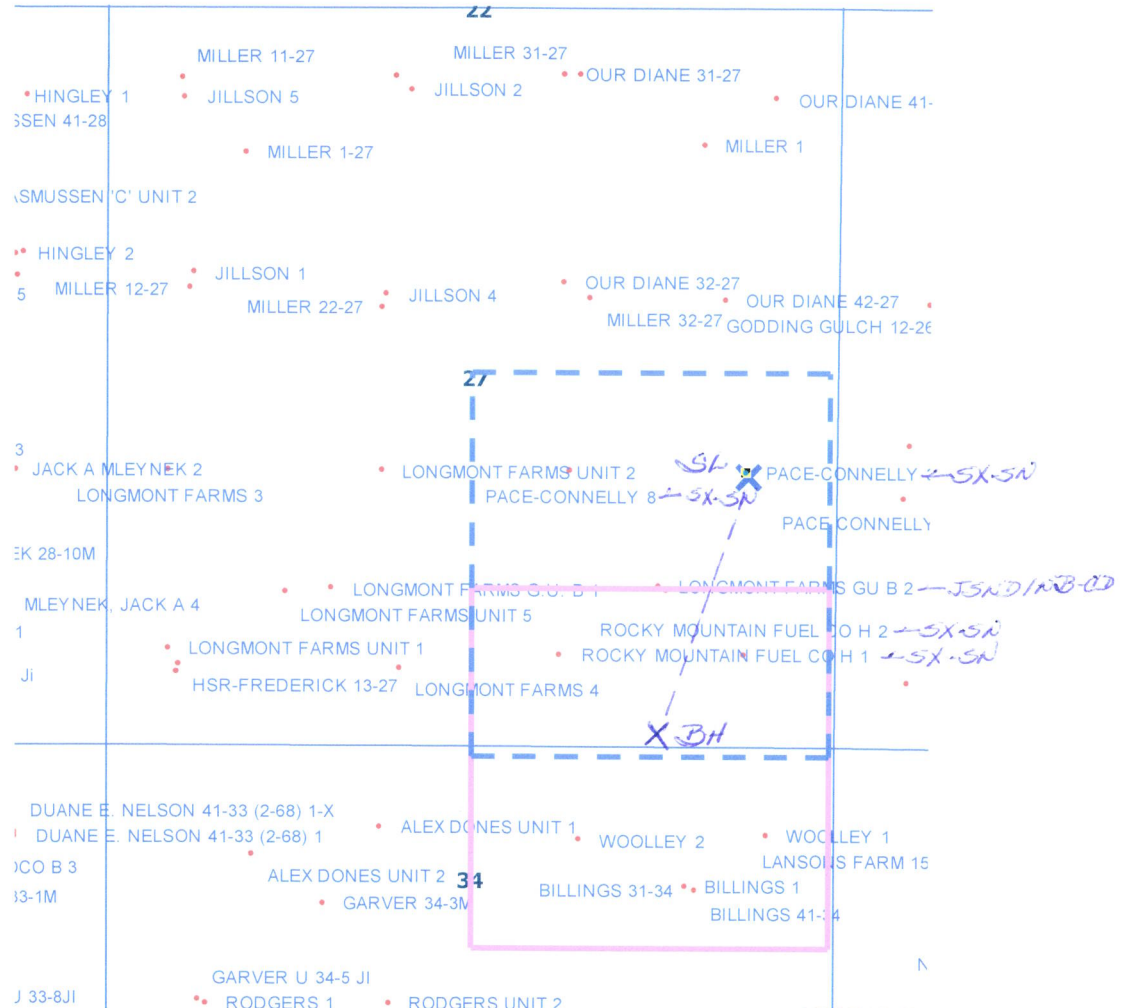
JERRY F. HARCEK JR., PLS 34997  
COLORADO LICENSED PROFESSIONAL LAND SURVEYOR  
FOR AND ON BEHALF OF P.F.S., LLC



PREPARED BY:	FIELD DATE:	WELL NAME:
PFS	12-11-09	WILDFLOWER 37-27
Petroleum Field Services, LLC	DRAWING DATE:	SURFACE LOCATION:
1801 W. 13th Ave.	12-17-09	WELD COUNTY, COLORADO
Denver, CO 80204	BY:	NE 1/4 SE 1/4, SEC. 27, T2N, R68W
	SMF	

NOTICE: ACCORDING TO COLORADO LAW YOU MUST COMMENCE ANY LEGAL ACTION BASED UPON ANY DEFECT IN THIS SURVEY WITHIN THREE YEARS AFTER YOU FIRST DISCOVER SUCH DEFECT. IN NO EVENT MAY ANY ACTION BASED UPON ANY DEFECT IN THIS SURVEY BE COMMENCED MORE THAN TEN YEARS FROM THIS SAID DATE OF THIS CERTIFICATION SHOWN HEREON.

# WILDFLOWER 37-27 NESE Sec. 27 T2N-R68W



## LEGEND



Proposed 160 acre Spacing Unit (Solid line).



Bottom Hole Located SE/4SE/4, Sec. 27-T2N-R68W (Dashed line).

**This 1/4 Section has less than 8 bottom hole wells producing from the Codell, Niobrara & J Sand Formations.**