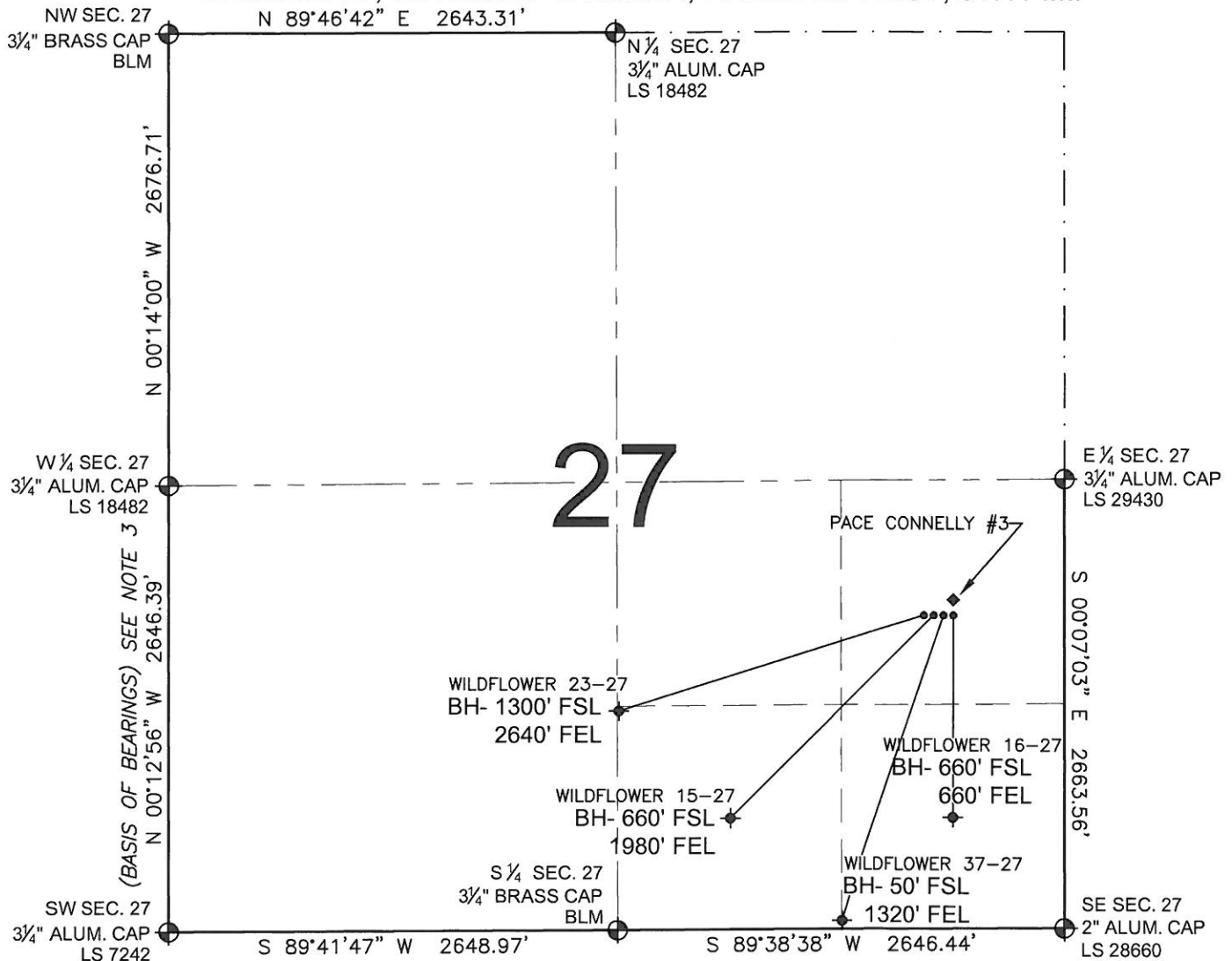


# PAD DRAWING - WILDFLOWER 4 PAD

SECTION 27, TOWNSHIP 2 NORTH, RANGE 68 WEST, 6TH P.M.



## LEGEND

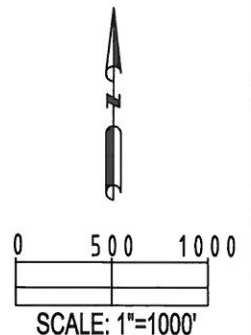
- = EXISTING MONUMENT   
 = BOTTOM HOLE   
 BH= BOTTOM HOLE  
 = PROPOSED WELL   
 = EXISTING WELL

## NOTES:

- THIS SURVEY WAS DONE BY GPS METHODS AND CONFORMS TO THE MINIMUM STANDARDS SET BY THE C.O.G.C.C., RULE NO. 215
- ELEVATIONS SHOWN AT THE WELL HEAD, AS WELL AS HORIZONTAL CONTROL, ARE BASED ON GPS-RTK VALUES DERIVED FROM DOING 2-HOUR STATIC GPS SESSIONS AND REDUCTIONS USING O.P.U.S. SOLUTIONS.  
VERTICAL = NAVD88; HORIZONTAL = NAD83/92
- THE BEARINGS SHOWN HEREON ARE BASED ON GPS OBSERVATIONS BETWEEN THE MONUMENTS SHOWN HEREON AS FOUND ON THE FIELD DATE BELOW.
- DISTANCES SHOWN ARE AT GROUND LEVEL, AS MEASURED IN THE FIELD, WITH TIES TO WELLS MEASURED AT A PERPENDICULAR TO SECTION LINES.

## NOTES:

PACE CONNELLY #3 IS 2011' FSL, 657' FEL.  
 WILDFLOWER 16-27 TO BE AT 1963' FSL, 657' FEL.  
 BOTTOM HOLE AT 660' FSL & 660' FEL.  
 WILDFLOWER 37-27 TO BE AT 1963' FSL, 667' FEL.  
 BOTTOM HOLE AT 50' FSL & 1320' FEL.  
 WILDFLOWER 15-27 TO BE AT 1963' FSL, 677' FEL.  
 BOTTOM HOLE AT 660' FSL & 1980' FEL.  
 WILDFLOWER 23-27 TO BE AT 1963' FSL, 687' FEL.  
 BOTTOM HOLE AT 1300' FSL & 2640' FEL.



## REVISIONS

INITIAL	DATE
SMF	12-24-09
SMF	06-14-10
SMF	07-02-10

PREPARED BY:

**PFS**

Petroleum Field Services, LLC  
1801 W. 13th Ave.  
Denver, CO 80204

KERR-MCGEE OIL & GAS ONSHORE LP

FIELD DATE:  
12-11-09

DRAWING DATE:  
12-17-09

BY:  
SMF

PAD NAME:  
WILDFLOWER 4 PAD

SURFACE LOCATION:

WELD COUNTY, COLORADO  
NE 1/4 SE 1/4, SEC. 27, T2N, R68W