

Encana OIL & GAS (USA) INC.

WELL PAD INTERFERENCE PLAT

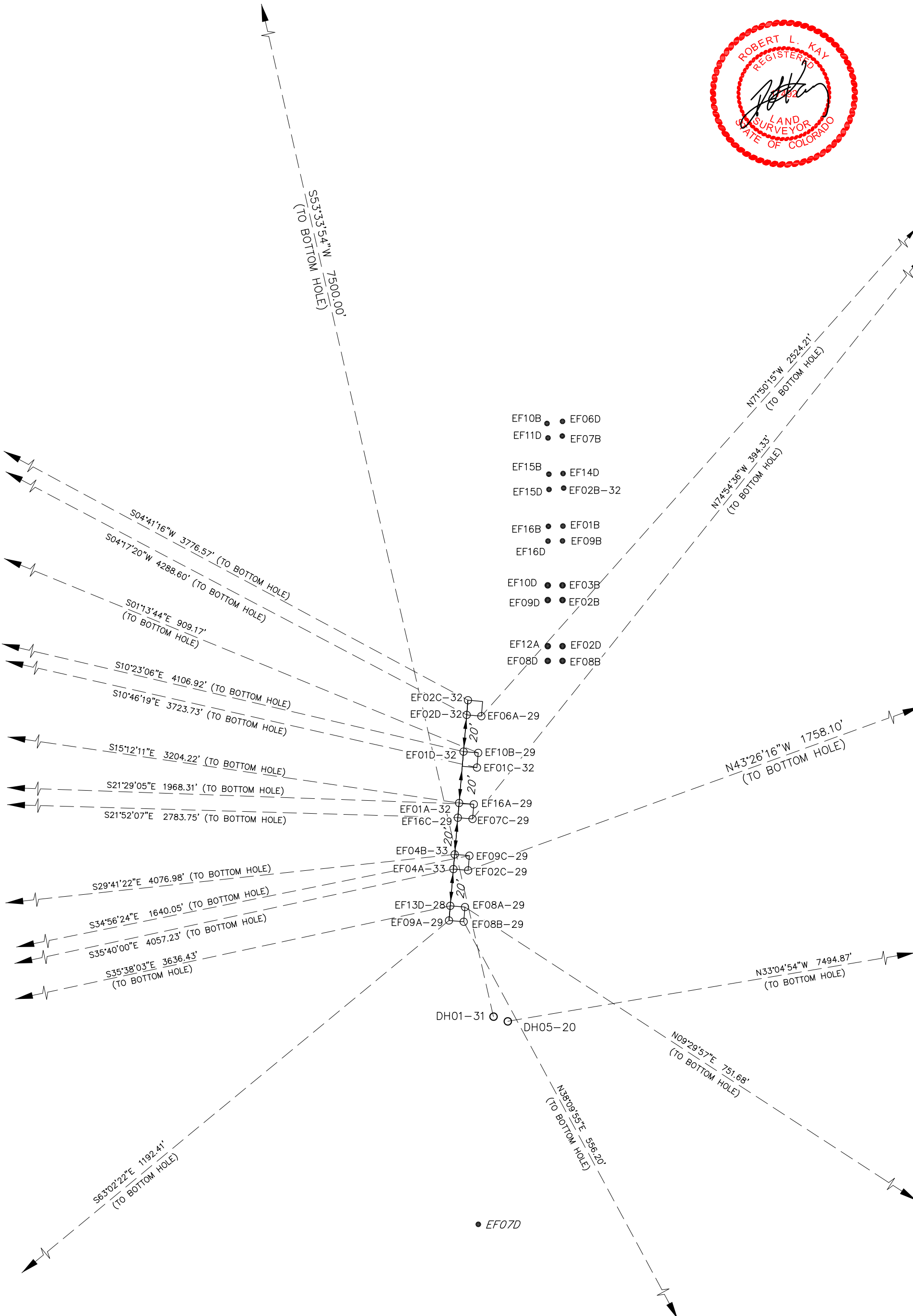
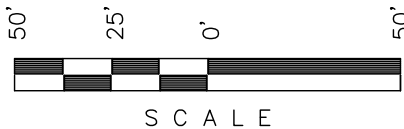
WELL PAD G29 595

SECTION 29, T5S, R95W, 6th P.M.
S 1/2 NE 1/4

SCALE: 1" = 50'
DATE: 04-24-08
Drawn By: D.R.B.

Revised: 11-20-08 D.R.B.
Revised: 02-16-10 D.R.B.
Revised: 05-23-10 D.R.B.
Revised: 06-29-10 D.R.B.
Revised: 07-28-10 D.R.B.

Sheet 2 of 11



Encana OIL & GAS (USA) INC.

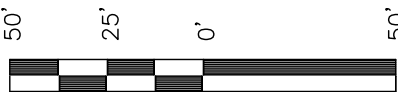
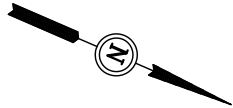
PRE-CONSTRUCTION LAYOUT FOR

WELL PAD G29 595

SECTION 29, T5S, R95W, 6th P.M.
S 1/2 NE 1/4

Sheet 3a of 11

SCALE: 1" = 50'
DATE: 05-24-10
Drawn By: D.R.B.
Revised: 06-29-10 D.R.B.
Revised: 07-22-10 D.R.B.



SCALE

NOTE:

Flare Pit is to be located a min. of 100' from the Well Head.

Existing Pipelines

Existing Pipelines

Wattle



Flare Stack



Steel Cutting Bin (45x10x12)

Production Equipment Area



59'

70'

EF10B ● EF06D
EF11D ● EF07B

EF15B ● EF14D
EF15D ● EF02B-32

EF16B ● EF01B
EF16D ● EF09B

EF10D ● EF03B
EF09D ● EF02B

EF12A ● EF02D
EF08D ● EF08B

35'

EF02C-32
EF02D-32
EF06A-29

EF01D-32
EF10B-29
EF01C-32

EF01A-32
EF16A-29
EF16C-29
EF07C-29

EF04B-33
EF09C-29
EF04A-33
EF02C-29

EF13D-28
EF08A-29
EF09A-29
EF08B-29

Meter Bldgs.

DH01-31

DH05-20

Dehy

2" Pipeline

Methanol Tank

Tank

WELL PAD H29 595
(Existing Pad)

Cement Block

Pipe Guard

Well Head
N. PARACHUTE EF07D
H29 595

Toolpusher

Toe of Fill Slope

Toe of Berm

Slash/Vegetation Buffer

Wattle

Pipeline Riser Area

Existing Pipelines

Topsoil Stockpile

Toe of Fill Slope

Toe of Berm

Slash/Vegetation Buffer

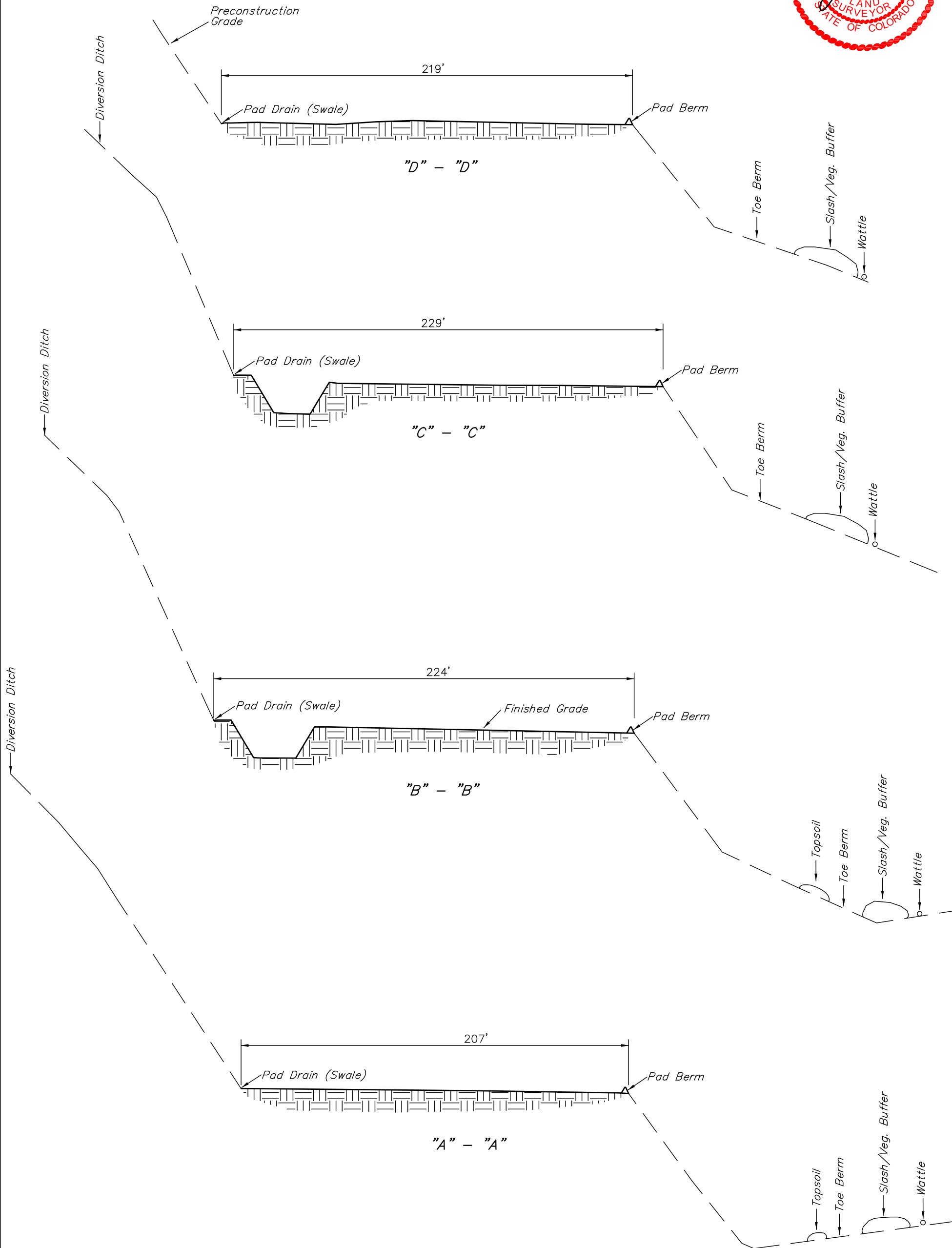
Wattle

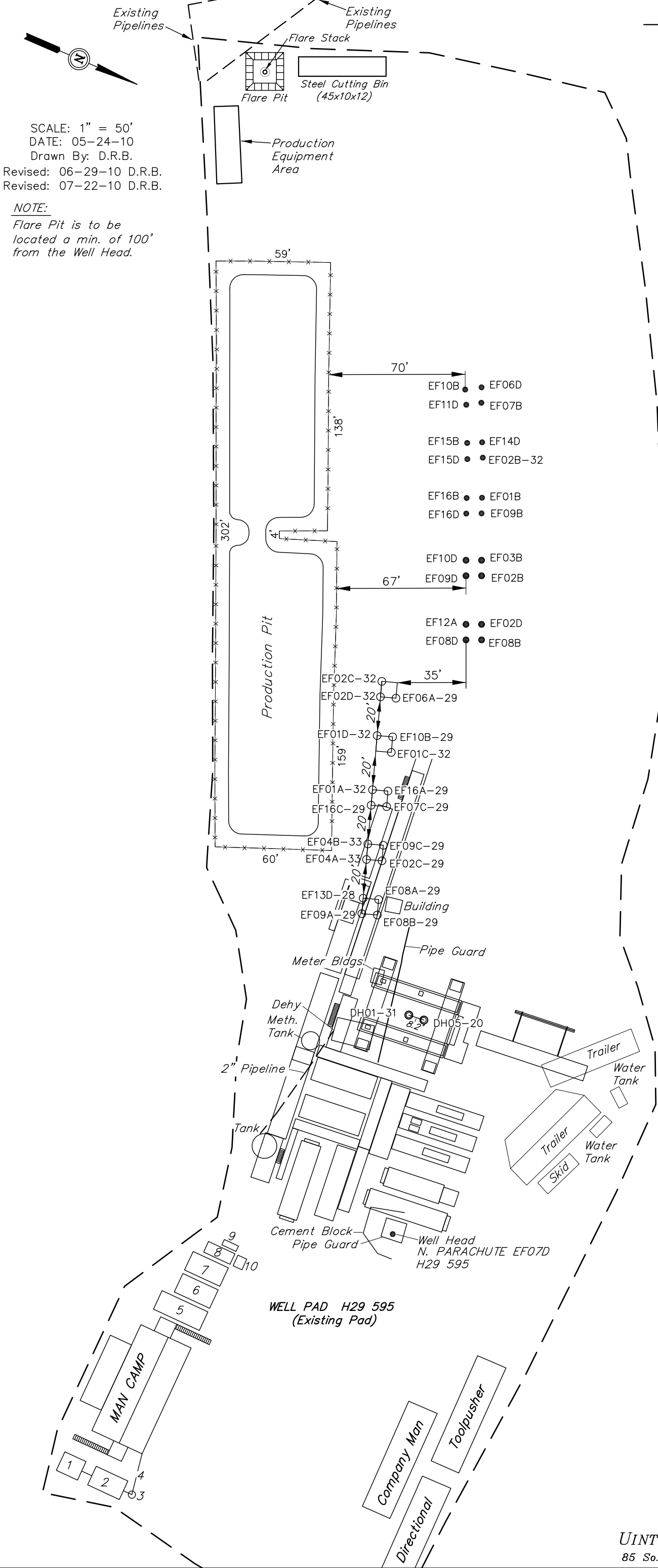
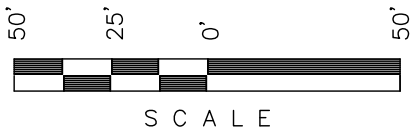
Encana OIL & GAS (USA) INC.
CONSTRUCTION LAYOUT CROSS SECTION FOR
WELL PAD G29 595
SECTION 29, T5S, R95W, 6th P.M.
S 1/2 NE 1/4

Sheet 4 of 11

1" = 20'
X-Section
Scale
1" = 50'

DATE: 06-09-10
Drawn By: D.R.B.





- LEGEND:
- 1 - OVERFLOW
 - 2 - SEWER TANK
 - 3 - LIFT STATION
 - 4 - SEWER LINE
 - 5 - WATER TANK
 - 6 - FREEZER
 - 7 - STORAGE
 - 8 - GENERATOR
 - 9 - FUEL
 - 10 - TRANSFORMER

Encana OIL & GAS (USA) INC.

PRODUCTION SCHEMATIC FOR

WELL PAD G29 595
SECTION 29, T5S, R95W, 6th P.M.
S 1/2 NE 1/4

Sheet 6 of 11

SCALE: 1" = 80'
DATE: 05-24-10
Drawn By: D.R.B.

Revised: 06-29-10 D.R.B.
Revised: 07-22-10 D.R.B.

