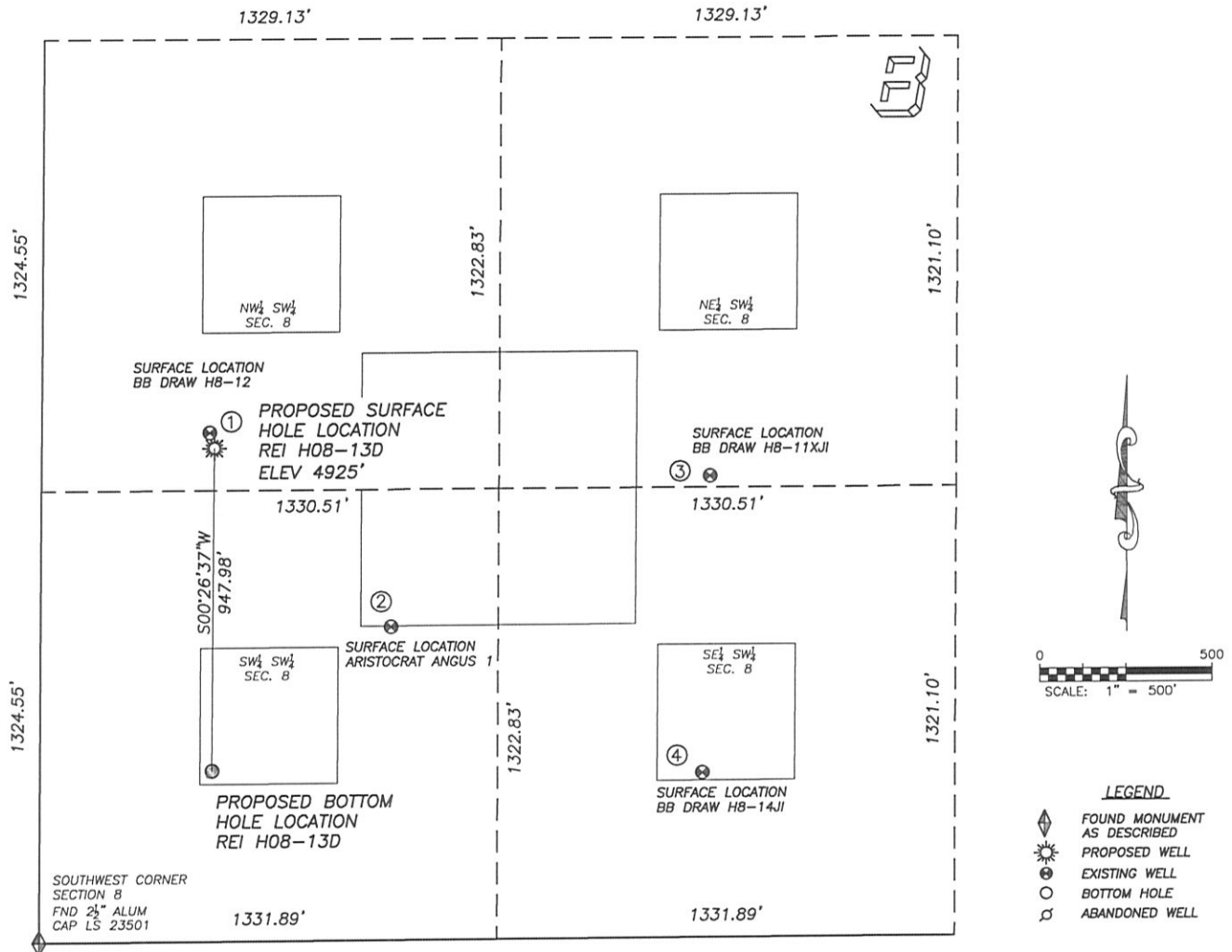


MULTI-WELL PLAN - NOBLE ENERGY

SECTION 8, TOWNSHIP 3 NORTH, RANGE 65 WEST OF THE 6TH PRINCIPAL MERIDIAN



①

BB DRAW H8-12
NW/SW SEC. 8
1493' FSL, 488' FWL
993' N OF PROPOSED
BOTTOM HOLE LOCATION
LAT. N40.23673°
LONG. W104.69504°
EL: 4925'
PDOP 1.1

②

ARISTOCRAT ANGUS 1
SW/SW SEC. 8
920' FSL, 1019' FWL
670' NE OF PROPOSED
BOTTOM HOLE LOCATION
LAT. N40.23516°
LONG. W104.69316°
EL: 4904'
PDOP 1.6

③

BB DRAW H8-11XJ
NE/SW SEC. 8
1355' FSL, 1945' FWL
1686' NE OF PROPOSED
BOTTOM HOLE LOCATION
LAT. N40.23636°
LONG. W104.68983°
EL: 4905'
PDOP 2.0

④

BB DRAW H8-14J
SE/SW SEC. 8
484' FSL, 1927' FWL
1427' E OF PROPOSED
BOTTOM HOLE LOCATION
LAT. N40.23397°
LONG. W104.68991°
EL: 4899'
PDOP 1.7

NOTES:

- 1) THIS DOES NOT REPRESENT A BOUNDARY SURVEY
- 2) THE LATITUDES AND LONGITUDES SHOWN ARE REFERENCED TO NAD83
- 3) DATUM FOR ELEVATION IS NAVD88. ELEVATIONS ARE DERIVED FROM GPS-RTK OBSERVATIONS PROCESSED THROUGH OPUS, UTILIZING THE GEOID03 MODEL.