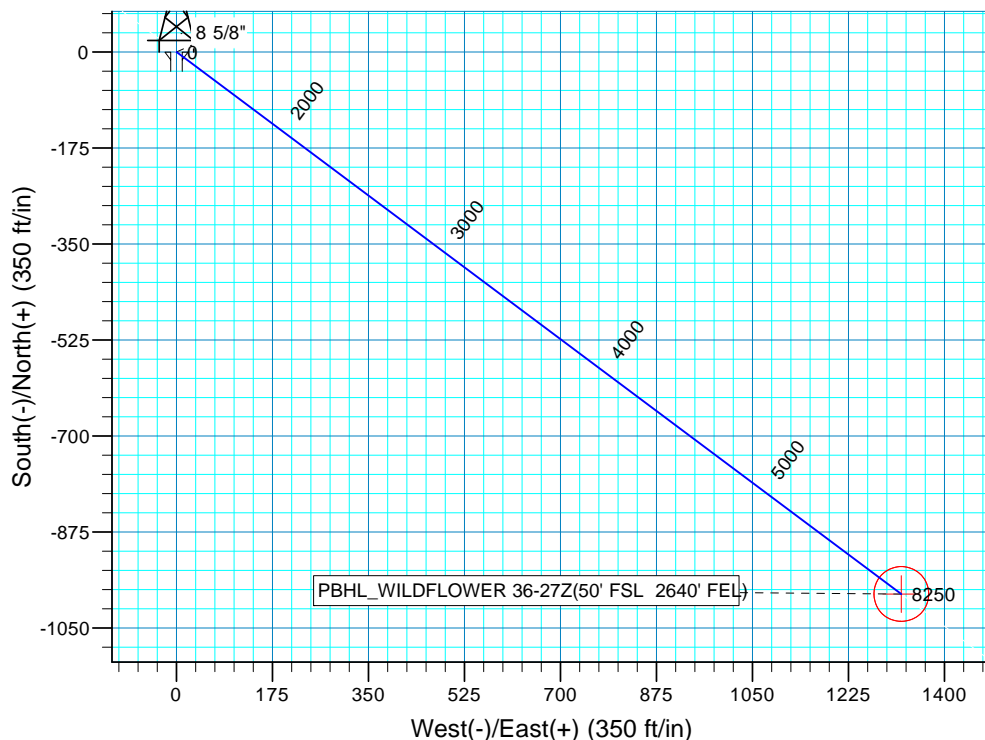
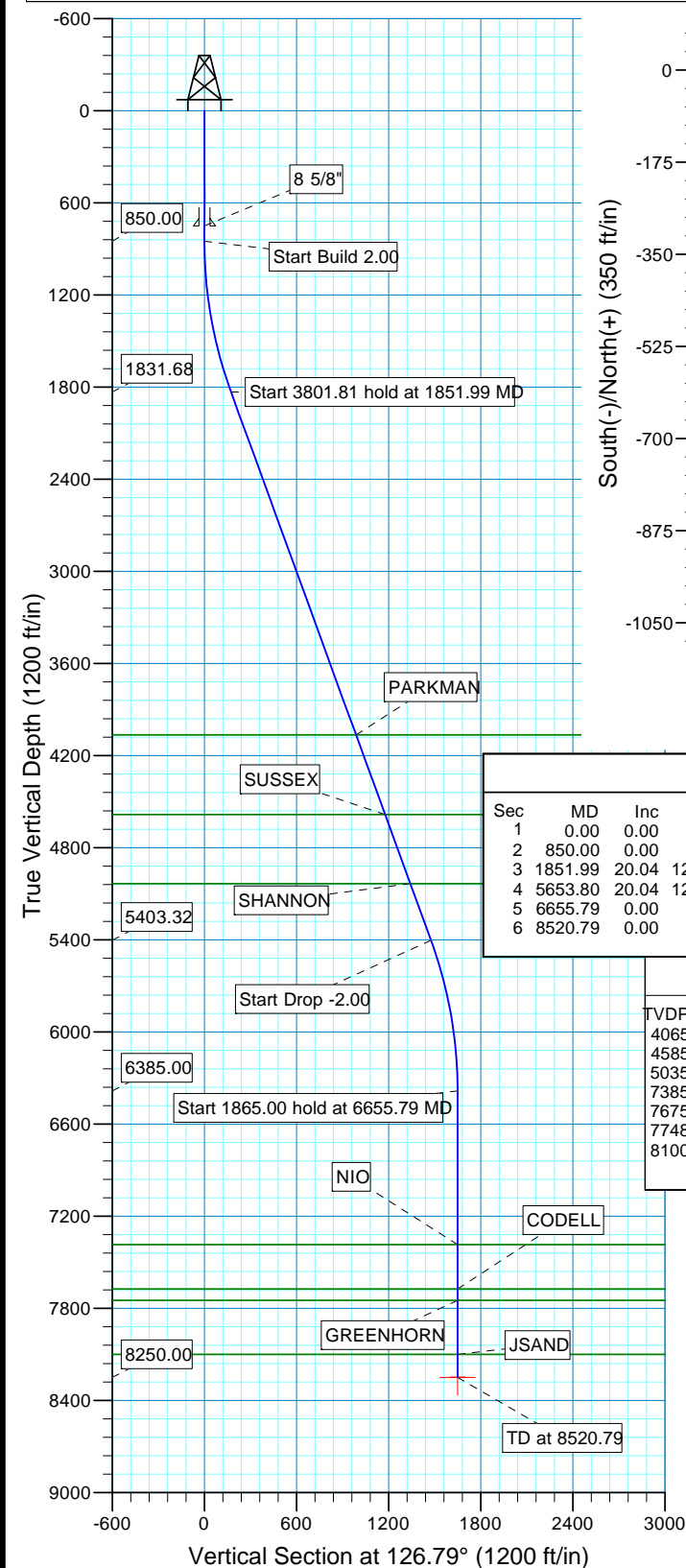
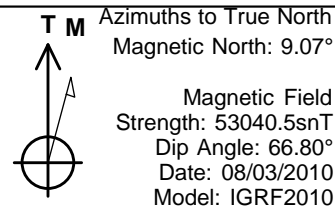


WELL DETAILS: P_WILDFLOWER 36-27

WELL @ 5023.00ft (Original Well Elev) 5008.00					
+N/-S	+E/-W	Northing	Easting	Latitude	Longitude
0.00	0.00	1281542.52	3141524.46	40° 6' 18.425 N	104° 59' 38.580 W

WELLBORE TARGET DETAILS (MAP CO-ORDINATES AND LAT/LONG)

Name	TVD	+N/-S	+E/-W	Northing	Easting	Latitude	Longitude	Shape
PBHL	8250.00	-987.88	1321.18	1280562.20	3142851.25	40° 6' 8.662 N	104° 59' 21.577 W	Circle (Radius: 50.00)



SECTION DETAILS

Sec	MD	Inc	Azi	TVD	+N/-S	+E/-W	Dleg	TFace	VSect	Target
1	0.00	0.00	0.00	0.00	0.00	0.00	0.00	0.00	0.00	
2	850.00	0.00	0.00	850.00	0.00	0.00	0.00	0.00	0.00	
3	1851.99	20.04	126.79	1831.68	-103.87	138.91	2.00	126.79	173.45	
4	5653.80	20.04	126.79	5403.32	-884.01	1182.27	0.00	0.00	1476.22	
5	6655.79	0.00	0.00	6385.00	-987.88	1321.18	2.00	180.00	1649.67	
6	8520.79	0.00	0.00	8250.00	-987.88	1321.18	0.00	0.00	1649.67	PBHL_WILDFLOWER 36-27Z(50' FSL 2640' FEL)

FORMATION TOP DETAILS

TVDPath	MDPath	Formation
4065.00	4229.23	PARKMAN
4585.00	4782.75	SUSSEX
5035.00	5261.75	SHANNON
7385.00	7655.79	NIO
7675.00	7945.79	CODELL
7748.00	8018.79	GREENHORN
8100.00	8370.79	JSAND

PROJECT DETAILS: COLORADO NORTHERN ZONE - 83

Geodetic System: US State Plane 1983
Datum: North American Datum 1983
Ellipsoid: GRS 1980
Zone: Colorado Northern Zone
Location: SECTION 27 T2N R68W
System Datum: Mean Sea Level
Local North: True

US ROCKIES REGION PLANNING

COLORADO NORTHERN ZONE - 83

WELD_WILDFLOWER 19-27 PAD

P_WILDFLOWER 36-27

P_WILDFLOWER 36-27

Plan: PLAN #1 8-3-10 RHS

Standard Planning Report

03 August, 2010

Database:	EDM5000-RobertS-Local	Local Co-ordinate Reference:	Well P_WILDFLOWER 36-27
Company:	US ROCKIES REGION PLANNING	TVD Reference:	WELL @ 5023.00ft (Original Well Elev)
Project:	COLORADO NORTHERN ZONE - 83	MD Reference:	WELL @ 5023.00ft (Original Well Elev)
Site:	WELD_WILDFLOWER 19-27 PAD	North Reference:	True
Well:	P_WILDFLOWER 36-27	Survey Calculation Method:	Minimum Curvature
Wellbore:	P_WILDFLOWER 36-27		
Design:	PLAN #1 8-3-10 RHS		

Project	COLORADO NORTHERN ZONE - 83, KERR MCGEE OIL & GAS ONSHORE LP		
Map System:	US State Plane 1983	System Datum:	Mean Sea Level
Geo Datum:	North American Datum 1983		
Map Zone:	Colorado Northern Zone		

Site	WELD_WILDFLOWER 19-27 PAD, SECTION 27 T2N R68W			
Site Position:		Northing:	1,281,572.77 usft	Latitude: 40° 6' 18.724 N
From:	Lat/Long	Easting:	3,141,524.29 usft	Longitude: 104° 59' 38.580 W
Position Uncertainty:	0.00 ft	Slot Radius:	13.200 in	Grid Convergence: 0.33 °

Well	P_WILDFLOWER 36-27, 1037 FSL 1332 FWL			
Well Position	+N/-S	-30.25 ft	Northing:	1,281,542.52 usft
	+E/-W	0.00 ft	Easting:	3,141,524.46 usft
Position Uncertainty		0.00 ft	Wellhead Elevation:	Ground Level: 5,008.00 ft

Wellbore	P_WILDFLOWER 36-27				
Magnetics	Model Name	Sample Date	Declination (°)	Dip Angle (°)	Field Strength (nT)
	IGRF2010	08/03/2010	9.08	66.80	53,040

Design	PLAN #1 8-3-10 RHS			
Audit Notes:				
Version:	Phase:	PLAN	Tie On Depth:	0.00
Vertical Section:	Depth From (TVD) (ft)	+N/-S (ft)	+E/-W (ft)	Direction (°)
	0.00	0.00	0.00	126.79

Plan Sections										
Measured Depth (ft)	Inclination (°)	Azimuth (°)	Vertical Depth (ft)	+N/-S (ft)	+E/-W (ft)	Dogleg Rate (°/100ft)	Build Rate (°/100ft)	Turn Rate (°/100ft)	TFO (°)	Target
0.00	0.00	0.00	0.00	0.00	0.00	0.00	0.00	0.00	0.00	
850.00	0.00	0.00	850.00	0.00	0.00	0.00	0.00	0.00	0.00	
1,851.99	20.04	126.79	1,831.68	-103.87	138.91	2.00	2.00	0.00	126.79	
5,653.80	20.04	126.79	5,403.32	-884.01	1,182.27	0.00	0.00	0.00	0.00	
6,655.79	0.00	0.00	6,385.00	-987.88	1,321.18	2.00	-2.00	0.00	180.00	
8,520.79	0.00	0.00	8,250.00	-987.88	1,321.18	0.00	0.00	0.00	0.00	PBHL_WILDFLOWEF

Database:	EDM5000-RobertS-Local	Local Co-ordinate Reference:	Well P_WILDFLOWER 36-27
Company:	US ROCKIES REGION PLANNING	TVD Reference:	WELL @ 5023.00ft (Original Well Elev)
Project:	COLORADO NORTHERN ZONE - 83	MD Reference:	WELL @ 5023.00ft (Original Well Elev)
Site:	WELD_WILDFLOWER 19-27 PAD	North Reference:	True
Well:	P_WILDFLOWER 36-27	Survey Calculation Method:	Minimum Curvature
Wellbore:	P_WILDFLOWER 36-27		
Design:	PLAN #1 8-3-10 RHS		

Planned Survey									
Measured Depth (ft)	Inclination (°)	Azimuth (°)	Vertical Depth (ft)	+N/-S (ft)	+E/-W (ft)	Vertical Section (ft)	Dogleg Rate (°/100ft)	Build Rate (°/100ft)	Turn Rate (°/100ft)
0.00	0.00	0.00	0.00	0.00	0.00	0.00	0.00	0.00	0.00
100.00	0.00	0.00	100.00	0.00	0.00	0.00	0.00	0.00	0.00
200.00	0.00	0.00	200.00	0.00	0.00	0.00	0.00	0.00	0.00
300.00	0.00	0.00	300.00	0.00	0.00	0.00	0.00	0.00	0.00
400.00	0.00	0.00	400.00	0.00	0.00	0.00	0.00	0.00	0.00
500.00	0.00	0.00	500.00	0.00	0.00	0.00	0.00	0.00	0.00
600.00	0.00	0.00	600.00	0.00	0.00	0.00	0.00	0.00	0.00
700.00	0.00	0.00	700.00	0.00	0.00	0.00	0.00	0.00	0.00
750.00	0.00	0.00	750.00	0.00	0.00	0.00	0.00	0.00	0.00
8 5/8"									
800.00	0.00	0.00	800.00	0.00	0.00	0.00	0.00	0.00	0.00
850.00	0.00	0.00	850.00	0.00	0.00	0.00	0.00	0.00	0.00
Start Build 2.00									
900.00	1.00	126.79	900.00	-0.26	0.35	0.44	2.00	2.00	0.00
1,000.00	3.00	126.79	999.93	-2.35	3.14	3.93	2.00	2.00	0.00
1,100.00	5.00	126.79	1,099.68	-6.53	8.73	10.90	2.00	2.00	0.00
1,200.00	7.00	126.79	1,199.13	-12.79	17.10	21.35	2.00	2.00	0.00
1,300.00	9.00	126.79	1,298.15	-21.12	28.25	35.27	2.00	2.00	0.00
1,400.00	11.00	126.79	1,396.63	-31.52	42.15	52.63	2.00	2.00	0.00
1,500.00	13.00	126.79	1,494.44	-43.97	58.80	73.42	2.00	2.00	0.00
1,600.00	15.00	126.79	1,591.46	-58.46	78.18	97.62	2.00	2.00	0.00
1,700.00	17.00	126.79	1,687.58	-74.96	100.25	125.18	2.00	2.00	0.00
1,800.00	19.00	126.79	1,782.68	-93.46	125.00	156.08	2.00	2.00	0.00
1,851.99	20.04	126.79	1,831.68	-103.87	138.91	173.45	2.00	2.00	0.00
Start 3801.81 hold at 1851.99 MD									
1,900.00	20.04	126.79	1,876.79	-113.72	152.09	189.90	0.00	0.00	0.00
2,000.00	20.04	126.79	1,970.73	-134.24	179.53	224.17	0.00	0.00	0.00
2,100.00	20.04	126.79	2,064.68	-154.76	206.97	258.44	0.00	0.00	0.00
2,200.00	20.04	126.79	2,158.63	-175.28	234.42	292.70	0.00	0.00	0.00
2,300.00	20.04	126.79	2,252.57	-195.80	261.86	326.97	0.00	0.00	0.00
2,400.00	20.04	126.79	2,346.52	-216.32	289.31	361.24	0.00	0.00	0.00
2,500.00	20.04	126.79	2,440.46	-236.84	316.75	395.50	0.00	0.00	0.00
2,600.00	20.04	126.79	2,534.41	-257.36	344.19	429.77	0.00	0.00	0.00
2,700.00	20.04	126.79	2,628.35	-277.88	371.64	464.04	0.00	0.00	0.00
2,800.00	20.04	126.79	2,722.30	-298.40	399.08	498.31	0.00	0.00	0.00
2,900.00	20.04	126.79	2,816.24	-318.92	426.52	532.57	0.00	0.00	0.00
3,000.00	20.04	126.79	2,910.19	-339.44	453.97	566.84	0.00	0.00	0.00
3,100.00	20.04	126.79	3,004.13	-359.96	481.41	601.11	0.00	0.00	0.00
3,200.00	20.04	126.79	3,098.08	-380.48	508.86	635.37	0.00	0.00	0.00
3,300.00	20.04	126.79	3,192.03	-401.00	536.30	669.64	0.00	0.00	0.00
3,400.00	20.04	126.79	3,285.97	-421.52	563.74	703.91	0.00	0.00	0.00
3,500.00	20.04	126.79	3,379.92	-442.04	591.19	738.18	0.00	0.00	0.00
3,600.00	20.04	126.79	3,473.86	-462.56	618.63	772.44	0.00	0.00	0.00
3,700.00	20.04	126.79	3,567.81	-483.08	646.07	806.71	0.00	0.00	0.00
3,800.00	20.04	126.79	3,661.75	-503.60	673.52	840.98	0.00	0.00	0.00
3,900.00	20.04	126.79	3,755.70	-524.12	700.96	875.25	0.00	0.00	0.00
4,000.00	20.04	126.79	3,849.64	-544.64	728.41	909.51	0.00	0.00	0.00
4,100.00	20.04	126.79	3,943.59	-565.17	755.85	943.78	0.00	0.00	0.00
4,200.00	20.04	126.79	4,037.54	-585.69	783.29	978.05	0.00	0.00	0.00
4,229.23	20.04	126.79	4,065.00	-591.68	791.32	988.06	0.00	0.00	0.00
PARKMAN									
4,300.00	20.04	126.79	4,131.48	-606.21	810.74	1,012.31	0.00	0.00	0.00
4,400.00	20.04	126.79	4,225.43	-626.73	838.18	1,046.58	0.00	0.00	0.00
4,500.00	20.04	126.79	4,319.37	-647.25	865.62	1,080.85	0.00	0.00	0.00

Database:	EDM5000-RobertS-Local	Local Co-ordinate Reference:	Well P_WILDFLOWER 36-27
Company:	US ROCKIES REGION PLANNING	TVD Reference:	WELL @ 5023.00ft (Original Well Elev)
Project:	COLORADO NORTHERN ZONE - 83	MD Reference:	WELL @ 5023.00ft (Original Well Elev)
Site:	WELD_WILDFLOWER 19-27 PAD	North Reference:	True
Well:	P_WILDFLOWER 36-27	Survey Calculation Method:	Minimum Curvature
Wellbore:	P_WILDFLOWER 36-27		
Design:	PLAN #1 8-3-10 RHS		

Planned Survey									
Measured Depth (ft)	Inclination (°)	Azimuth (°)	Vertical Depth (ft)	+N/-S (ft)	+E/-W (ft)	Vertical Section (ft)	Dogleg Rate (°/100ft)	Build Rate (°/100ft)	Turn Rate (°/100ft)
4,600.00	20.04	126.79	4,413.32	-667.77	893.07	1,115.12	0.00	0.00	0.00
4,700.00	20.04	126.79	4,507.26	-688.29	920.51	1,149.38	0.00	0.00	0.00
4,782.75	20.04	126.79	4,585.00	-705.27	943.22	1,177.74	0.00	0.00	0.00
SUSSEX									
4,800.00	20.04	126.79	4,601.21	-708.81	947.96	1,183.65	0.00	0.00	0.00
4,900.00	20.04	126.79	4,695.15	-729.33	975.40	1,217.92	0.00	0.00	0.00
5,000.00	20.04	126.79	4,789.10	-749.85	1,002.84	1,252.18	0.00	0.00	0.00
5,100.00	20.04	126.79	4,883.04	-770.37	1,030.29	1,286.45	0.00	0.00	0.00
5,200.00	20.04	126.79	4,976.99	-790.89	1,057.73	1,320.72	0.00	0.00	0.00
5,261.75	20.04	126.79	5,035.00	-803.56	1,074.68	1,341.88	0.00	0.00	0.00
SHANNON									
5,300.00	20.04	126.79	5,070.94	-811.41	1,085.17	1,354.99	0.00	0.00	0.00
5,400.00	20.04	126.79	5,164.88	-831.93	1,112.62	1,389.25	0.00	0.00	0.00
5,500.00	20.04	126.79	5,258.83	-852.45	1,140.06	1,423.52	0.00	0.00	0.00
5,600.00	20.04	126.79	5,352.77	-872.97	1,167.51	1,457.79	0.00	0.00	0.00
5,653.80	20.04	126.79	5,403.32	-884.01	1,182.27	1,476.22	0.00	0.00	0.00
Start Drop -2.00									
5,700.00	19.12	126.79	5,446.84	-893.28	1,194.67	1,491.70	2.00	-2.00	0.00
5,800.00	17.12	126.79	5,541.88	-911.90	1,219.57	1,522.80	2.00	-2.00	0.00
5,900.00	15.12	126.79	5,637.95	-928.52	1,241.80	1,550.55	2.00	-2.00	0.00
6,000.00	13.12	126.79	5,734.92	-943.12	1,261.33	1,574.94	2.00	-2.00	0.00
6,100.00	11.12	126.79	5,832.69	-955.69	1,278.14	1,595.93	2.00	-2.00	0.00
6,200.00	9.12	126.79	5,931.13	-966.21	1,292.20	1,613.49	2.00	-2.00	0.00
6,300.00	7.12	126.79	6,030.12	-974.66	1,303.51	1,627.61	2.00	-2.00	0.00
6,400.00	5.12	126.79	6,129.55	-981.04	1,312.04	1,638.26	2.00	-2.00	0.00
6,500.00	3.12	126.79	6,229.29	-985.34	1,317.79	1,645.44	2.00	-2.00	0.00
6,600.00	1.12	126.79	6,329.21	-987.55	1,320.75	1,649.13	2.00	-2.00	0.00
6,655.79	0.00	0.00	6,385.00	-987.88	1,321.18	1,649.67	2.00	-2.00	0.00
Start 1865.00 hold at 6655.79 MD									
6,700.00	0.00	0.00	6,429.21	-987.88	1,321.18	1,649.67	0.00	0.00	0.00
6,800.00	0.00	0.00	6,529.21	-987.88	1,321.18	1,649.67	0.00	0.00	0.00
6,900.00	0.00	0.00	6,629.21	-987.88	1,321.18	1,649.67	0.00	0.00	0.00
7,000.00	0.00	0.00	6,729.21	-987.88	1,321.18	1,649.67	0.00	0.00	0.00
7,100.00	0.00	0.00	6,829.21	-987.88	1,321.18	1,649.67	0.00	0.00	0.00
7,200.00	0.00	0.00	6,929.21	-987.88	1,321.18	1,649.67	0.00	0.00	0.00
7,300.00	0.00	0.00	7,029.21	-987.88	1,321.18	1,649.67	0.00	0.00	0.00
7,400.00	0.00	0.00	7,129.21	-987.88	1,321.18	1,649.67	0.00	0.00	0.00
7,500.00	0.00	0.00	7,229.21	-987.88	1,321.18	1,649.67	0.00	0.00	0.00
7,600.00	0.00	0.00	7,329.21	-987.88	1,321.18	1,649.67	0.00	0.00	0.00
7,655.79	0.00	0.00	7,385.00	-987.88	1,321.18	1,649.67	0.00	0.00	0.00
NIO									
7,700.00	0.00	0.00	7,429.21	-987.88	1,321.18	1,649.67	0.00	0.00	0.00
7,800.00	0.00	0.00	7,529.21	-987.88	1,321.18	1,649.67	0.00	0.00	0.00
7,900.00	0.00	0.00	7,629.21	-987.88	1,321.18	1,649.67	0.00	0.00	0.00
7,945.79	0.00	0.00	7,675.00	-987.88	1,321.18	1,649.67	0.00	0.00	0.00
CODELL									
8,000.00	0.00	0.00	7,729.21	-987.88	1,321.18	1,649.67	0.00	0.00	0.00
8,018.79	0.00	0.00	7,748.00	-987.88	1,321.18	1,649.67	0.00	0.00	0.00
GREENHORN									
8,100.00	0.00	0.00	7,829.21	-987.88	1,321.18	1,649.67	0.00	0.00	0.00
8,200.00	0.00	0.00	7,929.21	-987.88	1,321.18	1,649.67	0.00	0.00	0.00
8,300.00	0.00	0.00	8,029.21	-987.88	1,321.18	1,649.67	0.00	0.00	0.00
8,370.79	0.00	0.00	8,100.00	-987.88	1,321.18	1,649.67	0.00	0.00	0.00

Database:	EDM5000-RobertS-Local	Local Co-ordinate Reference:	Well P_WILDFLOWER 36-27
Company:	US ROCKIES REGION PLANNING	TVD Reference:	WELL @ 5023.00ft (Original Well Elev)
Project:	COLORADO NORTHERN ZONE - 83	MD Reference:	WELL @ 5023.00ft (Original Well Elev)
Site:	WELD_WILDFLOWER 19-27 PAD	North Reference:	True
Well:	P_WILDFLOWER 36-27	Survey Calculation Method:	Minimum Curvature
Wellbore:	P_WILDFLOWER 36-27		
Design:	PLAN #1 8-3-10 RHS		

Planned Survey									
Measured Depth (ft)	Inclination (°)	Azimuth (°)	Vertical Depth (ft)	+N/-S (ft)	+E/-W (ft)	Vertical Section (ft)	Dogleg Rate (°/100ft)	Build Rate (°/100ft)	Turn Rate (°/100ft)
JSAND									
8,400.00	0.00	0.00	8,129.21	-987.88	1,321.18	1,649.67	0.00	0.00	0.00
8,500.00	0.00	0.00	8,229.21	-987.88	1,321.18	1,649.67	0.00	0.00	0.00
8,520.79	0.00	0.00	8,250.00	-987.88	1,321.18	1,649.67	0.00	0.00	0.00
PBHL_WILDFLOWER 36-27Z(50' FSL 2640' FEL)									

Design Targets									
Target Name	Dip Angle (°)	Dip Dir. (°)	TVD (ft)	+N/-S (ft)	+E/-W (ft)	Northing (usft)	Easting (usft)	Latitude	Longitude
- hit/miss target									
- Shape									
PBHL_WILDFLOWER 3	0.00	0.00	8,250.00	-987.88	1,321.18	1,280,562.20	3,142,851.25	40° 6' 8.662 N	104° 59' 21.577 W
- plan hits target center									
- Circle (radius 50.00)									

Casing Points					
Measured Depth (ft)	Vertical Depth (ft)	Name	Casing Diameter (in)	Hole Diameter (in)	
750.00	750.00	8 5/8"	8.620	11.000	

Formations					
Measured Depth (ft)	Vertical Depth (ft)	Name	Lithology	Dip (°)	Dip Direction (°)
4,229.23	4,065.00	PARKMAN			
4,782.75	4,585.00	SUSSEX			
5,261.75	5,035.00	SHANNON			
7,655.79	7,385.00	NIO			
7,945.79	7,675.00	CODELL			
8,018.79	7,748.00	GREENHORN			
8,370.79	8,100.00	JSAND			

Plan Annotations					
Measured Depth (ft)	Vertical Depth (ft)	Local Coordinates			
		+N/-S (ft)	+E/-W (ft)	Comment	
850.00	850.00	0.00	0.00	Start Build 2.00	
1,851.99	1,831.68	-103.87	138.91	Start 3801.81 hold at 1851.99 MD	
5,653.80	5,403.32	-884.01	1,182.27	Start Drop -2.00	
6,655.79	6,385.00	-987.88	1,321.18	Start 1865.00 hold at 6655.79 MD	
8,520.79	8,250.00	-987.88	1,321.18	TD at 8520.79	