

WELL DETAILS: P\_WILDFLOWER 35-27

WELL @ 5023.00ft (Original Well Elev) 5008.00					
+N/-S	+E/-W	Northing	Easting	Latitude	Longitude
0.00	0.00	1281532.69	3141524.52	40° 6' 18.327 N	104° 59' 38.580 W

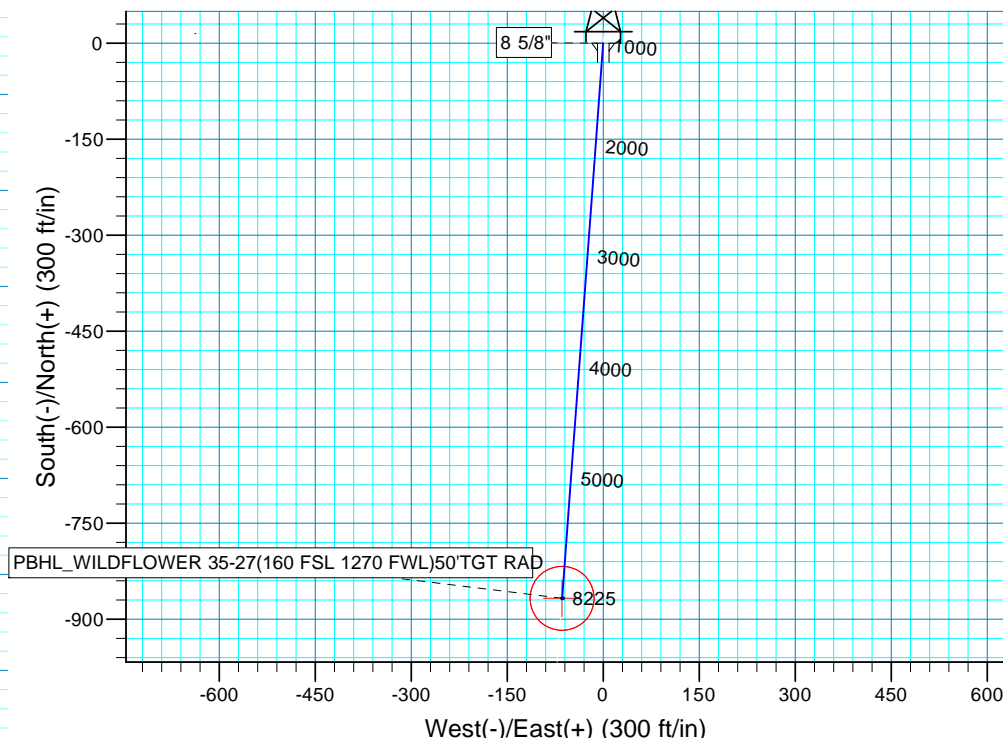
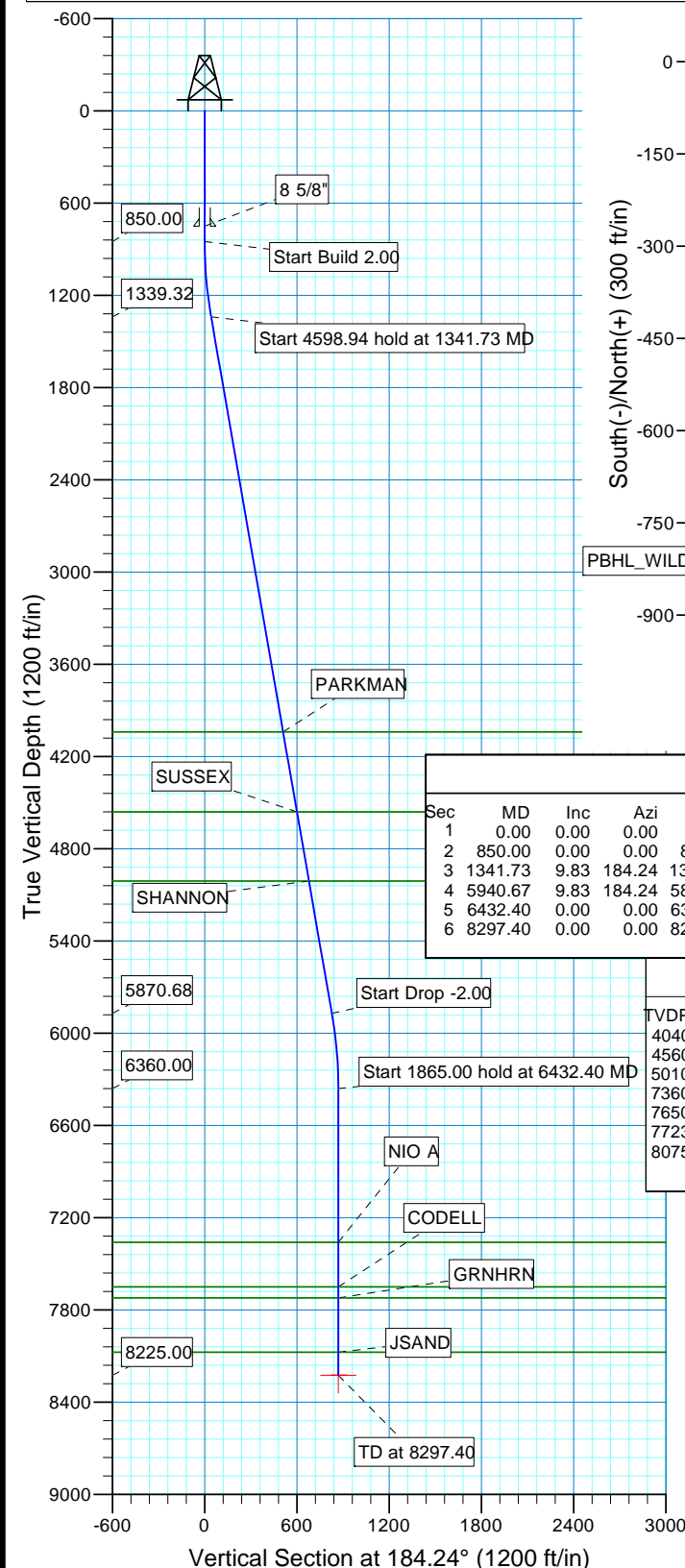
WELLBORE TARGET DETAILS (MAP CO-ORDINATES AND LAT/LONG)

Name	TVD	+N/-S	+E/-W	Northing	Easting	Latitude	Longitude	Shape
PBHL	8225.00	-867.34	-64.34	1280665.00	3141465.13	40° 6' 9.756 N	104° 59' 39.408 W	Circle (Radius: 50.00)



Azimuths to True North  
Magnetic North: 9.07°

Magnetic Field  
Strength: 53040.5snT  
Dip Angle: 66.80°  
Date: 08/03/2010  
Model: IGRF2010



SECTION DETAILS

Sec	MD	Inc	Azi	TVD	+N/-S	+E/-W	Dleg	TFace	Vsect	Target
1	0.00	0.00	0.00	0.00	0.00	0.00	0.00	0.00	0.00	
2	850.00	0.00	0.00	850.00	0.00	0.00	0.00	0.00	0.00	
3	1341.73	9.83	184.24	1339.32	-41.98	-3.11	2.00	184.24	42.10	
4	5940.67	9.83	184.24	5870.68	-825.35	-61.22	0.00	0.00	827.62	
5	6432.40	0.00	0.00	6360.00	-867.34	-64.34	2.00	180.00	869.72	
6	8297.40	0.00	0.00	8225.00	-867.34	-64.34	0.00	0.00	869.72	PBHL_WILDFLOWER 35-27(160 FSL 1270 FWL)50'TGT RAD

FORMATION TOP DETAILS

TVDPath	MDPath	Formation
4040.00	4082.69	PARKMAN
4560.00	4610.45	SUSSEX
5010.00	5067.16	SHANNON
7360.00	7432.40	NIO A
7650.00	7722.40	CODELL
7723.00	7795.40	GRNHRN
8075.00	8147.40	JSAND

PROJECT DETAILS: COLORADO NORTHERN ZONE - 83

Geodetic System: US State Plane 1983  
Datum: North American Datum 1983  
Ellipsoid: GRS 1980  
Zone: Colorado Northern Zone  
Location: SECTION 27 T2N R68W  
System Datum: Mean Sea Level  
Local North: True

# **US ROCKIES REGION PLANNING**

**COLORADO NORTHERN ZONE - 83**

**WELD\_WILDFLOWER 19-27 PAD**

**P\_WILDFLOWER 35-27**

**P\_WILDFLOWER 35-27**

**Plan: PLAN #1 8-3-10 RHS**

## **Standard Planning Report**

**03 August, 2010**

<b>Database:</b>	EDM5000-RobertS-Local	<b>Local Co-ordinate Reference:</b>	Well P_WILDFLOWER 35-27
<b>Company:</b>	US ROCKIES REGION PLANNING	<b>TVD Reference:</b>	WELL @ 5023.00ft (Original Well Elev)
<b>Project:</b>	COLORADO NORTHERN ZONE - 83	<b>MD Reference:</b>	WELL @ 5023.00ft (Original Well Elev)
<b>Site:</b>	WELD_WILDFLOWER 19-27 PAD	<b>North Reference:</b>	True
<b>Well:</b>	P_WILDFLOWER 35-27	<b>Survey Calculation Method:</b>	Minimum Curvature
<b>Wellbore:</b>	P_WILDFLOWER 35-27		
<b>Design:</b>	PLAN #1 8-3-10 RHS		

<b>Project</b>	COLORADO NORTHERN ZONE - 83, KERR MCGEE OIL & GAS ONSHORE LP		
<b>Map System:</b>	US State Plane 1983	<b>System Datum:</b>	Mean Sea Level
<b>Geo Datum:</b>	North American Datum 1983		
<b>Map Zone:</b>	Colorado Northern Zone		

<b>Site</b>	WELD_WILDFLOWER 19-27 PAD, SECTION 27 T2N R68W			
<b>Site Position:</b>		<b>Northing:</b>	1,281,572.77 usft	<b>Latitude:</b> 40° 6' 18.724 N
<b>From:</b>	Lat/Long	<b>Easting:</b>	3,141,524.29 usft	<b>Longitude:</b> 104° 59' 38.580 W
<b>Position Uncertainty:</b>	0.00 ft	<b>Slot Radius:</b>	13.200 in	<b>Grid Convergence:</b> 0.33 °

<b>Well</b>	P_WILDFLOWER 35-27, 1027' FSL 1332' FWL			
<b>Well Position</b>	<b>+N/-S</b>	-40.08 ft	<b>Northing:</b>	1,281,532.69 usft
	<b>+E/-W</b>	0.00 ft	<b>Easting:</b>	3,141,524.52 usft
<b>Position Uncertainty</b>		0.00 ft	<b>Wellhead Elevation:</b>	<b>Ground Level:</b> 5,008.00 ft

<b>Wellbore</b>	P_WILDFLOWER 35-27				
<b>Magnetics</b>	<b>Model Name</b>	<b>Sample Date</b>	<b>Declination (°)</b>	<b>Dip Angle (°)</b>	<b>Field Strength (nT)</b>
	IGRF2010	08/03/2010	9.08	66.80	53,040

<b>Design</b>	PLAN #1 8-3-10 RHS			
<b>Audit Notes:</b>				
<b>Version:</b>	<b>Phase:</b>	PLAN	<b>Tie On Depth:</b>	0.00
<b>Vertical Section:</b>	<b>Depth From (TVD) (ft)</b>	<b>+N/-S (ft)</b>	<b>+E/-W (ft)</b>	<b>Direction (°)</b>
	0.00	0.00	0.00	184.24

<b>Plan Sections</b>										
Measured Depth (ft)	Inclination (°)	Azimuth (°)	Vertical Depth (ft)	+N/-S (ft)	+E/-W (ft)	Dogleg Rate (°/100ft)	Build Rate (°/100ft)	Turn Rate (°/100ft)	TFO (°)	Target
0.00	0.00	0.00	0.00	0.00	0.00	0.00	0.00	0.00	0.00	
850.00	0.00	0.00	850.00	0.00	0.00	0.00	0.00	0.00	0.00	
1,341.73	9.83	184.24	1,339.32	-41.98	-3.11	2.00	2.00	0.00	184.24	
5,940.67	9.83	184.24	5,870.68	-825.35	-61.22	0.00	0.00	0.00	0.00	
6,432.40	0.00	0.00	6,360.00	-867.34	-64.34	2.00	-2.00	0.00	180.00	
8,297.40	0.00	0.00	8,225.00	-867.34	-64.34	0.00	0.00	0.00	0.00	PBHL_WILDFLOWEF

<b>Database:</b>	EDM5000-RobertS-Local	<b>Local Co-ordinate Reference:</b>	Well P_WILDFLOWER 35-27
<b>Company:</b>	US ROCKIES REGION PLANNING	<b>TVD Reference:</b>	WELL @ 5023.00ft (Original Well Elev)
<b>Project:</b>	COLORADO NORTHERN ZONE - 83	<b>MD Reference:</b>	WELL @ 5023.00ft (Original Well Elev)
<b>Site:</b>	WELD_WILDFLOWER 19-27 PAD	<b>North Reference:</b>	True
<b>Well:</b>	P_WILDFLOWER 35-27	<b>Survey Calculation Method:</b>	Minimum Curvature
<b>Wellbore:</b>	P_WILDFLOWER 35-27		
<b>Design:</b>	PLAN #1 8-3-10 RHS		

Planned Survey									
Measured Depth (ft)	Inclination (°)	Azimuth (°)	Vertical Depth (ft)	+N/-S (ft)	+E/-W (ft)	Vertical Section (ft)	Dogleg Rate (°/100ft)	Build Rate (°/100ft)	Turn Rate (°/100ft)
0.00	0.00	0.00	0.00	0.00	0.00	0.00	0.00	0.00	0.00
100.00	0.00	0.00	100.00	0.00	0.00	0.00	0.00	0.00	0.00
200.00	0.00	0.00	200.00	0.00	0.00	0.00	0.00	0.00	0.00
300.00	0.00	0.00	300.00	0.00	0.00	0.00	0.00	0.00	0.00
400.00	0.00	0.00	400.00	0.00	0.00	0.00	0.00	0.00	0.00
500.00	0.00	0.00	500.00	0.00	0.00	0.00	0.00	0.00	0.00
600.00	0.00	0.00	600.00	0.00	0.00	0.00	0.00	0.00	0.00
700.00	0.00	0.00	700.00	0.00	0.00	0.00	0.00	0.00	0.00
750.00	0.00	0.00	750.00	0.00	0.00	0.00	0.00	0.00	0.00
8 5/8"									
800.00	0.00	0.00	800.00	0.00	0.00	0.00	0.00	0.00	0.00
850.00	0.00	0.00	850.00	0.00	0.00	0.00	0.00	0.00	0.00
Start Build 2.00									
900.00	1.00	184.24	900.00	-0.44	-0.03	0.44	2.00	2.00	0.00
1,000.00	3.00	184.24	999.93	-3.92	-0.29	3.93	2.00	2.00	0.00
1,100.00	5.00	184.24	1,099.68	-10.87	-0.81	10.90	2.00	2.00	0.00
1,200.00	7.00	184.24	1,199.13	-21.30	-1.58	21.35	2.00	2.00	0.00
1,300.00	9.00	184.24	1,298.15	-35.17	-2.61	35.27	2.00	2.00	0.00
1,341.73	9.83	184.24	1,339.32	-41.98	-3.11	42.10	2.00	2.00	0.00
Start 4598.94 hold at 1341.73 MD									
1,400.00	9.83	184.24	1,396.73	-51.91	-3.85	52.05	0.00	0.00	0.00
1,500.00	9.83	184.24	1,495.26	-68.94	-5.11	69.13	0.00	0.00	0.00
1,600.00	9.83	184.24	1,593.79	-85.98	-6.38	86.21	0.00	0.00	0.00
1,700.00	9.83	184.24	1,692.32	-103.01	-7.64	103.29	0.00	0.00	0.00
1,800.00	9.83	184.24	1,790.85	-120.04	-8.90	120.37	0.00	0.00	0.00
1,900.00	9.83	184.24	1,889.39	-137.08	-10.17	137.45	0.00	0.00	0.00
2,000.00	9.83	184.24	1,987.92	-154.11	-11.43	154.53	0.00	0.00	0.00
2,100.00	9.83	184.24	2,086.45	-171.14	-12.70	171.61	0.00	0.00	0.00
2,200.00	9.83	184.24	2,184.98	-188.18	-13.96	188.69	0.00	0.00	0.00
2,300.00	9.83	184.24	2,283.51	-205.21	-15.22	205.78	0.00	0.00	0.00
2,400.00	9.83	184.24	2,382.04	-222.25	-16.49	222.86	0.00	0.00	0.00
2,500.00	9.83	184.24	2,480.57	-239.28	-17.75	239.94	0.00	0.00	0.00
2,600.00	9.83	184.24	2,579.10	-256.31	-19.01	257.02	0.00	0.00	0.00
2,700.00	9.83	184.24	2,677.63	-273.35	-20.28	274.10	0.00	0.00	0.00
2,800.00	9.83	184.24	2,776.16	-290.38	-21.54	291.18	0.00	0.00	0.00
2,900.00	9.83	184.24	2,874.69	-307.41	-22.80	308.26	0.00	0.00	0.00
3,000.00	9.83	184.24	2,973.22	-324.45	-24.07	325.34	0.00	0.00	0.00
3,100.00	9.83	184.24	3,071.75	-341.48	-25.33	342.42	0.00	0.00	0.00
3,200.00	9.83	184.24	3,170.28	-358.51	-26.59	359.50	0.00	0.00	0.00
3,300.00	9.83	184.24	3,268.81	-375.55	-27.86	376.58	0.00	0.00	0.00
3,400.00	9.83	184.24	3,367.34	-392.58	-29.12	393.66	0.00	0.00	0.00
3,500.00	9.83	184.24	3,465.87	-409.62	-30.39	410.74	0.00	0.00	0.00
3,600.00	9.83	184.24	3,564.40	-426.65	-31.65	427.82	0.00	0.00	0.00
3,700.00	9.83	184.24	3,662.93	-443.68	-32.91	444.90	0.00	0.00	0.00
3,800.00	9.83	184.24	3,761.46	-460.72	-34.18	461.98	0.00	0.00	0.00
3,900.00	9.83	184.24	3,859.99	-477.75	-35.44	479.06	0.00	0.00	0.00
4,000.00	9.83	184.24	3,958.53	-494.78	-36.70	496.14	0.00	0.00	0.00
4,082.69	9.83	184.24	4,040.00	-508.87	-37.75	510.27	0.00	0.00	0.00
PARKMAN									
4,100.00	9.83	184.24	4,057.06	-511.82	-37.97	513.22	0.00	0.00	0.00
4,200.00	9.83	184.24	4,155.59	-528.85	-39.23	530.30	0.00	0.00	0.00
4,300.00	9.83	184.24	4,254.12	-545.89	-40.49	547.39	0.00	0.00	0.00
4,400.00	9.83	184.24	4,352.65	-562.92	-41.76	564.47	0.00	0.00	0.00
4,500.00	9.83	184.24	4,451.18	-579.95	-43.02	581.55	0.00	0.00	0.00

<b>Database:</b>	EDM5000-RobertS-Local	<b>Local Co-ordinate Reference:</b>	Well P_WILDFLOWER 35-27
<b>Company:</b>	US ROCKIES REGION PLANNING	<b>TVD Reference:</b>	WELL @ 5023.00ft (Original Well Elev)
<b>Project:</b>	COLORADO NORTHERN ZONE - 83	<b>MD Reference:</b>	WELL @ 5023.00ft (Original Well Elev)
<b>Site:</b>	WELD_WILDFLOWER 19-27 PAD	<b>North Reference:</b>	True
<b>Well:</b>	P_WILDFLOWER 35-27	<b>Survey Calculation Method:</b>	Minimum Curvature
<b>Wellbore:</b>	P_WILDFLOWER 35-27		
<b>Design:</b>	PLAN #1 8-3-10 RHS		

Planned Survey									
Measured Depth (ft)	Inclination (°)	Azimuth (°)	Vertical Depth (ft)	+N/-S (ft)	+E/-W (ft)	Vertical Section (ft)	Dogleg Rate (°/100ft)	Build Rate (°/100ft)	Turn Rate (°/100ft)
4,600.00	9.83	184.24	4,549.71	-596.99	-44.28	598.63	0.00	0.00	0.00
4,610.45	9.83	184.24	4,560.00	-598.77	-44.42	600.41	0.00	0.00	0.00
<b>SUSSEX</b>									
4,700.00	9.83	184.24	4,648.24	-614.02	-45.55	615.71	0.00	0.00	0.00
4,800.00	9.83	184.24	4,746.77	-631.05	-46.81	632.79	0.00	0.00	0.00
4,900.00	9.83	184.24	4,845.30	-648.09	-48.07	649.87	0.00	0.00	0.00
5,000.00	9.83	184.24	4,943.83	-665.12	-49.34	666.95	0.00	0.00	0.00
5,067.16	9.83	184.24	5,010.00	-676.56	-50.19	678.42	0.00	0.00	0.00
<b>SHANNON</b>									
5,100.00	9.83	184.24	5,042.36	-682.15	-50.60	684.03	0.00	0.00	0.00
5,200.00	9.83	184.24	5,140.89	-699.19	-51.87	701.11	0.00	0.00	0.00
5,300.00	9.83	184.24	5,239.42	-716.22	-53.13	718.19	0.00	0.00	0.00
5,400.00	9.83	184.24	5,337.95	-733.26	-54.39	735.27	0.00	0.00	0.00
5,500.00	9.83	184.24	5,436.48	-750.29	-55.66	752.35	0.00	0.00	0.00
5,600.00	9.83	184.24	5,535.01	-767.32	-56.92	769.43	0.00	0.00	0.00
5,700.00	9.83	184.24	5,633.54	-784.36	-58.18	786.51	0.00	0.00	0.00
5,800.00	9.83	184.24	5,732.07	-801.39	-59.45	803.59	0.00	0.00	0.00
5,900.00	9.83	184.24	5,830.60	-818.42	-60.71	820.67	0.00	0.00	0.00
5,940.67	9.83	184.24	5,870.68	-825.35	-61.22	827.62	0.00	0.00	0.00
<b>Start Drop -2.00</b>									
6,000.00	8.65	184.24	5,929.24	-834.85	-61.93	837.15	2.00	-2.00	0.00
6,100.00	6.65	184.24	6,028.34	-848.13	-62.91	850.46	2.00	-2.00	0.00
6,200.00	4.65	184.24	6,127.85	-857.94	-63.64	860.30	2.00	-2.00	0.00
6,300.00	2.65	184.24	6,227.64	-864.28	-64.11	866.66	2.00	-2.00	0.00
6,400.00	0.65	184.24	6,327.60	-867.15	-64.32	869.54	2.00	-2.00	0.00
6,432.40	0.00	0.00	6,360.00	-867.34	-64.34	869.72	2.00	-2.00	0.00
<b>Start 1865.00 hold at 6432.40 MD</b>									
6,500.00	0.00	0.00	6,427.60	-867.34	-64.34	869.72	0.00	0.00	0.00
6,600.00	0.00	0.00	6,527.60	-867.34	-64.34	869.72	0.00	0.00	0.00
6,700.00	0.00	0.00	6,627.60	-867.34	-64.34	869.72	0.00	0.00	0.00
6,800.00	0.00	0.00	6,727.60	-867.34	-64.34	869.72	0.00	0.00	0.00
6,900.00	0.00	0.00	6,827.60	-867.34	-64.34	869.72	0.00	0.00	0.00
7,000.00	0.00	0.00	6,927.60	-867.34	-64.34	869.72	0.00	0.00	0.00
7,100.00	0.00	0.00	7,027.60	-867.34	-64.34	869.72	0.00	0.00	0.00
7,200.00	0.00	0.00	7,127.60	-867.34	-64.34	869.72	0.00	0.00	0.00
7,300.00	0.00	0.00	7,227.60	-867.34	-64.34	869.72	0.00	0.00	0.00
7,400.00	0.00	0.00	7,327.60	-867.34	-64.34	869.72	0.00	0.00	0.00
7,432.40	0.00	0.00	7,360.00	-867.34	-64.34	869.72	0.00	0.00	0.00
<b>NIO A</b>									
7,500.00	0.00	0.00	7,427.60	-867.34	-64.34	869.72	0.00	0.00	0.00
7,600.00	0.00	0.00	7,527.60	-867.34	-64.34	869.72	0.00	0.00	0.00
7,700.00	0.00	0.00	7,627.60	-867.34	-64.34	869.72	0.00	0.00	0.00
7,722.40	0.00	0.00	7,650.00	-867.34	-64.34	869.72	0.00	0.00	0.00
<b>CODELL</b>									
7,795.40	0.00	0.00	7,723.00	-867.34	-64.34	869.72	0.00	0.00	0.00
<b>GRNHRN</b>									
7,800.00	0.00	0.00	7,727.60	-867.34	-64.34	869.72	0.00	0.00	0.00
7,900.00	0.00	0.00	7,827.60	-867.34	-64.34	869.72	0.00	0.00	0.00
8,000.00	0.00	0.00	7,927.60	-867.34	-64.34	869.72	0.00	0.00	0.00
8,100.00	0.00	0.00	8,027.60	-867.34	-64.34	869.72	0.00	0.00	0.00
8,147.40	0.00	0.00	8,075.00	-867.34	-64.34	869.72	0.00	0.00	0.00
<b>JSAND</b>									
8,200.00	0.00	0.00	8,127.60	-867.34	-64.34	869.72	0.00	0.00	0.00

<b>Database:</b>	EDM5000-RobertS-Local	<b>Local Co-ordinate Reference:</b>	Well P_WILDFLOWER 35-27
<b>Company:</b>	US ROCKIES REGION PLANNING	<b>TVD Reference:</b>	WELL @ 5023.00ft (Original Well Elev)
<b>Project:</b>	COLORADO NORTHERN ZONE - 83	<b>MD Reference:</b>	WELL @ 5023.00ft (Original Well Elev)
<b>Site:</b>	WELD_WILDFLOWER 19-27 PAD	<b>North Reference:</b>	True
<b>Well:</b>	P_WILDFLOWER 35-27	<b>Survey Calculation Method:</b>	Minimum Curvature
<b>Wellbore:</b>	P_WILDFLOWER 35-27		
<b>Design:</b>	PLAN #1 8-3-10 RHS		

Planned Survey									
Measured Depth (ft)	Inclination (°)	Azimuth (°)	Vertical Depth (ft)	+N/-S (ft)	+E/-W (ft)	Vertical Section (ft)	Dogleg Rate (°/100ft)	Build Rate (°/100ft)	Turn Rate (°/100ft)
8,297.40	0.00	0.00	8,225.00	-867.34	-64.34	869.72	0.00	0.00	0.00
PBHL_WILDFLOWER 35-27(160 FSL 1270 FWL)50'TGT RAD									

Design Targets									
Target Name	Dip Angle (°)	Dip Dir. (°)	TVD (ft)	+N/-S (ft)	+E/-W (ft)	Northing (usft)	Easting (usft)	Latitude	Longitude
- hit/miss target									
- Shape									
PBHL_WILDFLOWER 3	0.00	0.00	8,225.00	-867.34	-64.34	1,280,665.00	3,141,465.13	40° 6' 9.756 N	104° 59' 39.408 W
- plan hits target center									
- Circle (radius 50.00)									

Casing Points						Casing Diameter (in)	Hole Diameter (in)
Measured Depth (ft)	Vertical Depth (ft)	Name					
750.00	750.00	8 5/8"				8.620	11.000

Formations						
Measured Depth (ft)	Vertical Depth (ft)	Name	Lithology	Dip (°)	Dip Direction (°)	
4,082.69	4,040.00	PARKMAN				
4,610.45	4,560.00	SUSSEX				
5,067.16	5,010.00	SHANNON				
7,432.40	7,360.00	NIO A				
7,722.40	7,650.00	CODELL				
7,795.40	7,723.00	GRNHRN				
8,147.40	8,075.00	JSAND				

Plan Annotations					
Measured Depth (ft)	Vertical Depth (ft)	Local Coordinates			Comment
		+N/-S (ft)	+E/-W (ft)		
850.00	850.00	0.00	0.00		Start Build 2.00
1,341.73	1,339.32	-41.98	-3.11		Start 4598.94 hold at 1341.73 MD
5,940.67	5,870.68	-825.35	-61.22		Start Drop -2.00
6,432.40	6,360.00	-867.34	-64.34		Start 1865.00 hold at 6432.40 MD
8,297.40	8,225.00	-867.34	-64.34		TD at 8297.40